



**CANADA
2023**

Slot trench drains



VODALAND today

Established in 2000, Vodaland is an international manufacturer and supplier specializing in the fields of water collection and removal, custom project engineering, and terrain development.

7 countries
USA, Canada, France, Spain, Poland, Romania, Ukraine



4 Production Plants	11 Sales offices	ISO certified according to ISO 9001	R&D own service R&D	 Project Service	350 international team of workers
-------------------------------	----------------------------	---	-----------------------------------	---------------------	---

Categories



- ✓ Trench Drains
- ✓ Slot drains
- ✓ Industrial Drains
- ✓ Catch Basins



- ✓ Oil/water separators



- ✓ Erosion Control Grids
- ✓ Plastic Paving Grids



- ✓ Manhole Covers
- ✓ Garden Border/Edging

Product Title Terminology

Series	
BASE	Classified as load classes A-C
PRO	Classified as load classes D-E
MEGA	Classified as load classes D-F
Product Lines	
Concrete	Product made of Fiber Concrete material
Polymer concrete	Product made of Polymer Concrete material
Plastic	Product made of PPE Plastic material
STAINLESS	Fully Stainless Steel system
Width	
Inches	The inches in product title refers to internal width

Series explanation



BASE series:

Load Class A15-C250

Small & medium loads, being ideal for residential areas and light commercial application.



PRO series:

Load Class D400-E600

Medium & heavy-duty loads such as gas stations, parking garages, warehouses & forklifts, and curbsides.



MEGA series:







Load Class D400-F900

Used for heavy duty & extreme loads such as heavy traffic roads & highways, industrial zones, and airports.

Load Classifications

Load classifications have been done according to EN 1433; the only standard written specifically for grated trench drains, and internationally recognized.

Each item is designed for a specific load class. The load classes will aid you in choosing the right channels and Grates in accordance with the requirements of your construction project.

EASY Series		A 15 (3,300 lbs.)	Pedestrians, bicycles and wheel chair traffic. Pedestrian zones, parks, recreation areas, stadiums etc.
		B 125 (27,500 lbs.)	Medium-duty pneumatic tire traffic, autos and light trucks at speeds less than 20 m.p.h. Residential areas, parking lots, etc.
		C 250 (55,000 lbs.)	Heavy-duty pneumatic tire forklifts, tractor-trailers, buses. Road shoulders, auto services, garages, etc.
PRO Series		D 400 (88,000 lbs.)	Heavy-duty hard tire forklifts, trucks. Gas stations, car washes, industrial areas, warehouses, etc.
		E 600 (132,000 lbs.)	General dock and aircraft pavements.
		F 900 (198,000 lbs.)	General docks and aircraft pavements subject to high wheel loads.

Type of Surface Drainage

Linear Drainage Systems are used to collect storm-water and melted snow from a large area.



Linear and Point Drainage Systems are both used in storm-water removal and distribution, each with their own function and purpose. The linear channels collect and drain water from the surface, providing safety for road surfaces and pedestrian traffic.

Point Drainage Systems are used for local collection of storm-water and snowmelt.



Point drainage systems perform the function of collecting water at a center point. Our catch basins and inline inline catch basins are equipped with a basket to catch debris and sand, preventing excess sediments going into the system.

CONTENTS

DRAIN

SLOT trench drains

- SLOT 100.....8
- SLOT 150.....12
- SLOT 200.....14
- Mini SLOT drain system16
- Mini SLOT Slim Channel18
- STAINLESS slot drain system.....20



SLOT trench drains

WHY SLOT DRAINS?

SLOT drains provide a high-volume water flow - through a narrow opening. This is perfect for not only a sleek look and finish - but also for proper water drainage without the need for a large space / grating opening on your trench drain systems. Our SLOT drains come in three options. Our MICRO SLOT system, which has a height of 1" from the top of your channel selection, and is great for pavers or small confined areas. Our SLOT DRAIN system, with a 4" height slot opening, is great for concrete or brick paving applications. Lastly, our WALL SLOT system is perfect to place directly against an existing foundation or setting - so you don't have to cut into your already poured pad. All come in two finish options - our Galvanized Stamped Steel, and our Stainless Steel.



WHERE IS IT USED:

- Pedestrian and park zones
- Buildings:
 - open areas around buildings
 - wall zone
 - garage
- Areas around pools

Galvanized vs. Stainless

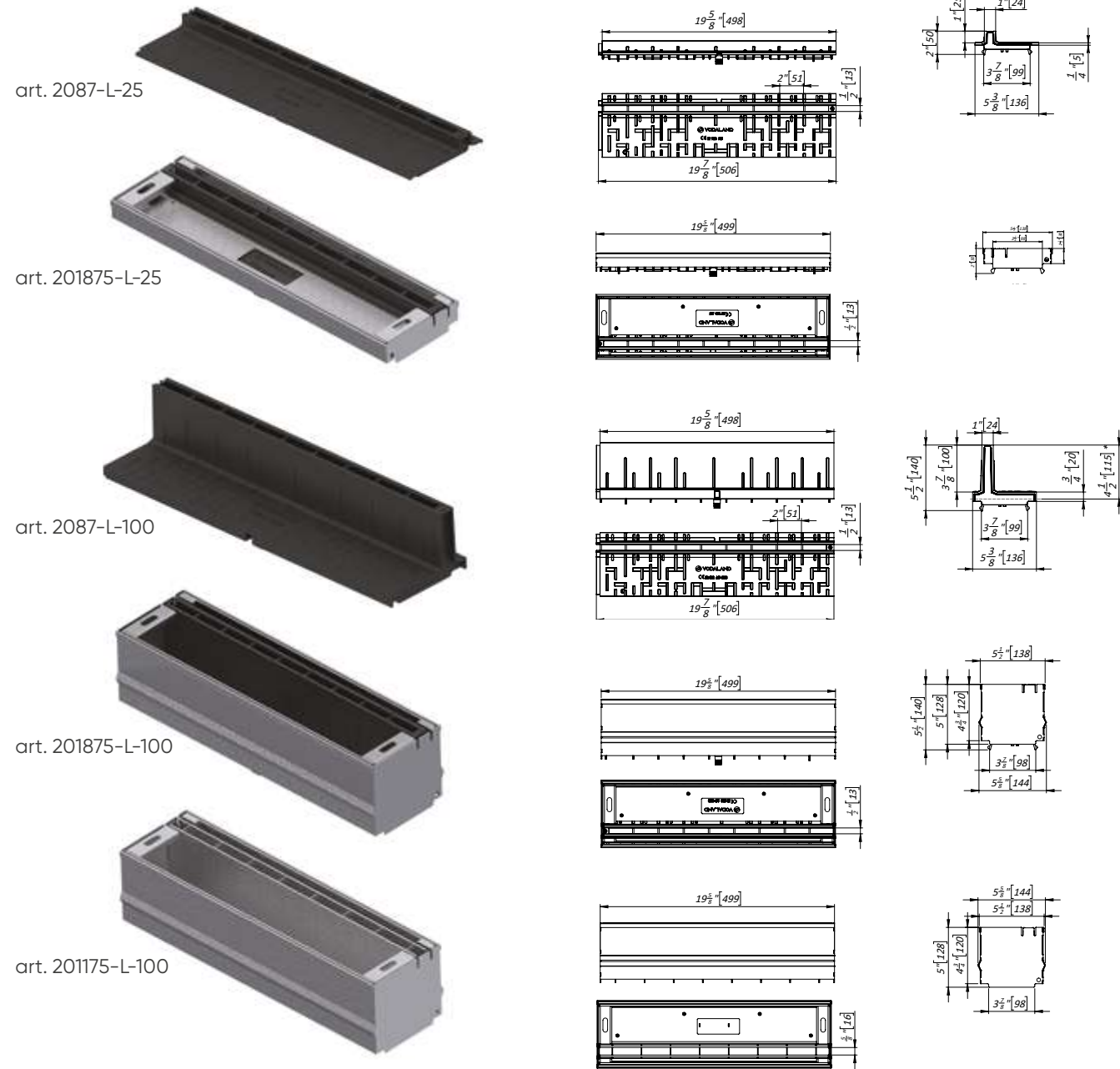
Galvanized Steel	Vs.	Stainless Steel
Good rust and corrosion prevention at a reasonable price. Effectiveness lessens after 3-5 years.	Pros & Cons	Total rust and corrosion prevention at a higher cost. Never loses effectiveness.
A-Class: Slotted B-Class: Mesh	Grate Types	A-Class: Slotted, ADA/Heel-Proof B-Class: Mesh
4", 6", 8"	Channel Sizes	4", 6", 8"
Grain	Finish	Metallic, Mirror

SLOT Trap Assembly and Corner system for SLOT Drain



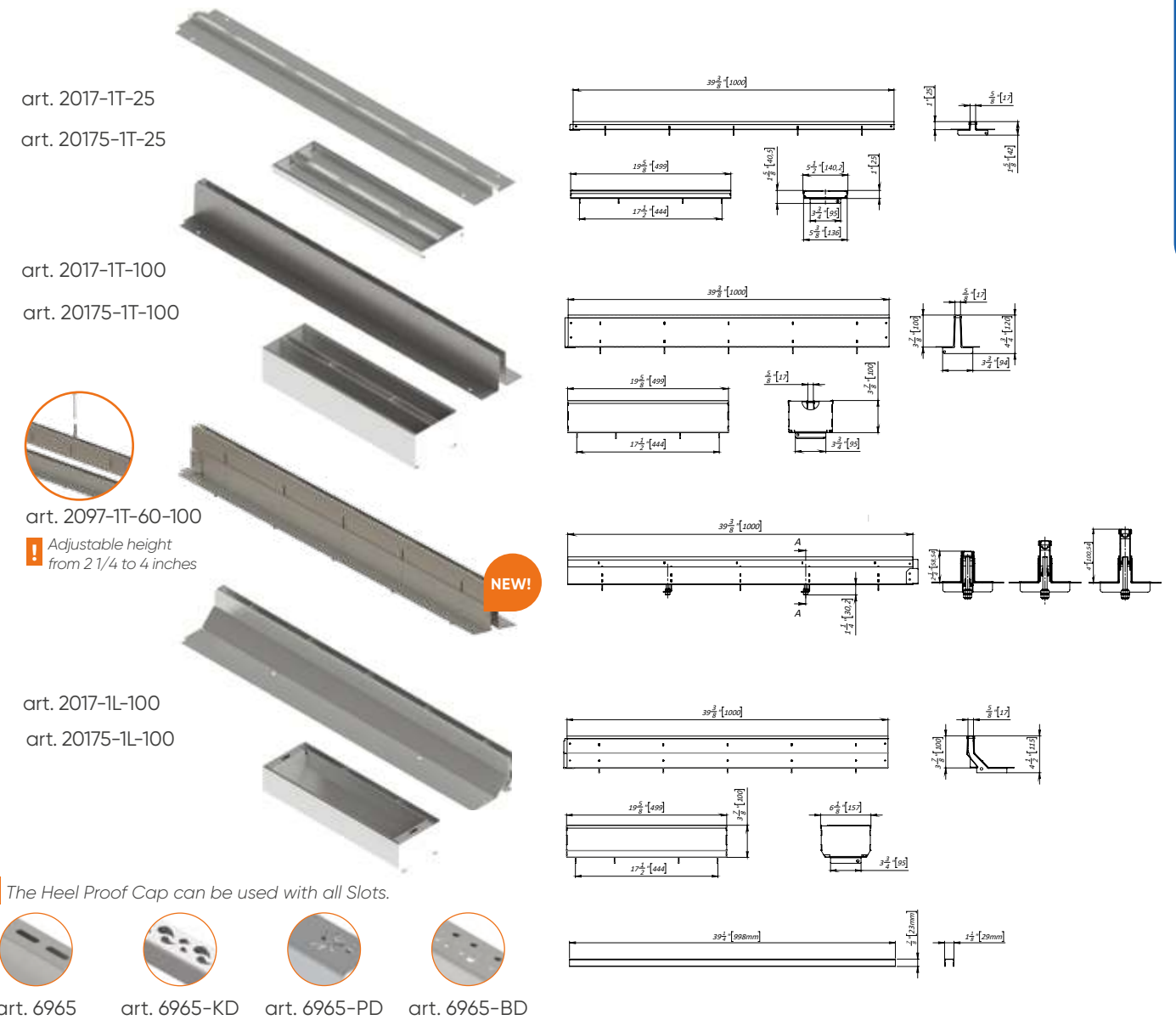
SLOT 100

4" Plastic SLOT Drain System



Article	Name	Load class	Length		Width		Height		Weight	
			in	mm	in	mm	in	mm	lbs	kgs
2087-L-25	4" Plastic Micro Wall SLOT Drain	A15	19.6	498	5.4	136	2	50	0.88	0.4
201875-L-25	4" Composite Micro Wall SLOT Trap Assembly Drain	A15	19.6	499	5.4	138	2	50	4.16	1.89
2087-L-100	4" Plastic Wall SLOT Drain H100	C250	19.6	498	5.4	136	5.5	140	1.78	0.81
201875-L-100	4" Composite Wall Slot SLOT Assembly Drain	A15	19.6	499	5.4	138	5.4	138	10.23	4.64
201175-L-100	4" Stainless Steel Wall SLOT Trap Assembly Drain	A15	19.6	499	5.7	144	5	128	14.15	6.43

4" Steel SLOT Drain System A15



Article	Name	Load class	Length		Width		Height		Weight
			in	mm	in	mm	in	mm	
2017-1T-25	4" Galvanized steel micro SLOT drain	A15	39.3	998	5.4	136	1.0	25	5.0
20175-1T-25	4" Galvanized steel SLOT trap assembly micro drain	A15	19.6	499	5.5	140	1.0	25	7.7
2017-1T-100	4" Galvanized steel SLOT drain	A15	39.3	998	5.4	136	4.5	115	9.0
20175-1T-100	4" Galvanized steel SLOT trap assembly drain	A15	19.6	499	5.5	140	3.9	98	15.7
2017-1L-100	4" Galvanized steel wall SLOT drain	A15	39.3	998	5.8	148	3.9	100	9.4
20175-1L-100	4" Galvanized steel wall SLOT trap assembly drain	A15	19.6	499	5.5	140	3.9	98	15.7
2097-1T-25	4" Stainless steel micro SLOT drain	A15	39.3	998	5.4	136	1.0	25	5.0
20975-1T-25	4" Stainless steel micro SLOT trap assembly drain	A15	19.6	499	5.5	140	1.0	25	7.7
2097-1T-100	4" Stainless steel SLOT drain	A15	39.3	998	5.4	136	4.5	115	9.0
20975-1T-100	4" Stainless steel SLOT trap assembly drain	A15	19.6	499	5.5	140	3.9	98	15.7
2097-1L-100	4" Stainless steel wall SLOT drain	A15	39.3	998	5.8	148	3.9	100	9.4
20975-1L-100	4" Stainless steel wall SLOT trap assembly drain	A15	19.6	499	5.5	140	3.9	98	15.7
2097-1T-60-100	4" Stainless steel SLOT drain with adjustable height	C250	39.4	1000	5.4	136	4	100.5	11.1
6965	Heel proof cap	A15	39.3	998	1.1	28	0.9	22	1.1
6965-KD	Heel proof cap (rain drop)	A15	39.3	998	1.1	28	0.9	22	1.1
6965-PD	Heel proof cap (palm trees)	A15	39.3	998	1.1	28	0.9	22	1.1
6965-BD	Heel proof cap (palm bubble)	A15	39.3	998	1.1	28	0.9	22	1.1

4" BASE Channels

NEW!

PRE SLOPE SYSTEM



art. 8080



art. 7080

More options available. See page 44.



Article	Name	Load class	Length		Width		Shallow invert		Taller invert		Height overall		Weight	
			in	mm	in	mm	in	mm	in	mm	in	mm	lbs	kgs
80060*	4" BASE neutral channel	C250	39.4	1000	6.1	156	1.7	42	1.7	42	2.4	60	2.4	1.09
80080-1	4" BASE sloped channel 1	C250	39.4	1000	6.1	156	1.7	42	2.0	50	3.1	80	2.7	1.23
80080*	4" BASE neutral channel	C250	39.4	1000	6.1	156	2.2	56	2.2	56	3.1	80	2.66	1.21
80090-2	4" BASE sloped channel 2	C250	39.4	1000	6.1	156	2.0	50	2.4	60	3.5	90	3	1.38
80100-3	4" BASE sloped channel 3	C250	39.4	1000	6.1	156	2.4	60	2.8	70	3.9	100	3.1	1.42
80100*	4" BASE neutral channel	C250	39.4	1000	6.1	156	2.8	70	2.8	70	3.9	100	2.99	1.36
80110-4	4" BASE sloped channel 4	C250	39.4	1000	6.1	156	2.8	70	3.1	80	4.3	110	3.6	1.65
80120-5	4" BASE sloped channel 5	C250	39.4	1000	6.1	156	3.1	80	3.5	88	4.7	120	3.7	1.66
80120*	4" BASE neutral channel	C250	39.4	1000	6.1	156	3.4	86	3.4	86	4.7	120	3.6	1.64
80130-6	4" BASE sloped channel 6	C250	39.4	1000	6.1	156	3.5	90	3.9	100	5.1	130	3.9	1.75
80140-7	4" BASE sloped channel 7	C250	39.4	1000	6.1	156	3.9	100	4.3	110	5.5	140	4	1.8
80150-8	4" BASE sloped channel 8	C250	39.4	1000	6.1	156	4.3	110	4.7	120	5.9	150	4	1.81
80150*	4" BASE neutral channel	C250	39.4	1000	6.1	156	6.2	120	4.7	120	6.1	155	4.3	1.95
80160-9	4" BASE sloped channel 9	C250	39.4	1000	6.1	156	4.7	120	5.1	130	6.3	160	4.62	2.1
80170-10	4" BASE sloped channel 10	C250	39.4	1000	6.1	156	4.72	130	5.5	139	6.7	170	4.82	2.19
80180-11	4" BASE sloped channel 11	C250	39.4	1000	6.1	156	5.1	139	5.8	148	7.1	180	5.02	2.28
80190-12	4" BASE sloped channel 12	C250	39.4	1000	6.1	156	5.5	148	6.2	157	7.5	190	5.22	2.37
80200-13	4" BASE sloped channel 13	C250	39.4	1000	6.1	156	5.8	157	6.5	166	7.9	200	5.42	2.46
80200*	4" BASE neutral channel	C250	39.4	1000	6.1	156	6.5	166	6.5	166	7.9	200	5.37	2.44
8080-M	4" BASE Plastic inline catch basin	C250	19.7	500	6.1	156	-	-	-	-	15.7	400	4.8	2.19

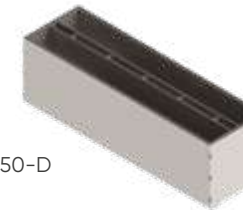
* these channels can be used individually

Article	Name	Load class	Length		Width		Height		Weight	
			in	mm	in	mm	in	mm	lbs	kgs
7000/250	4" BASE Polymer concrete trench drain H9.8"	C250	39.4	1000	5.4	138	9.8	250		35.5
7000/200	4" BASE Polymer concrete trench drain H7.9"	C250	39.4	1000	5.4	138	7.9	200		29.9
7000/150	4" BASE Polymer concrete trench drain H5.9"	C250	39.4	1000	5.4	138	5.9	150		23.9
7000/125	4" BASE Polymer concrete trench drain H4.9"	C250	39.4	1000	5.4	138	4.9	125		17.8
7000/100	4" BASE Polymer concrete trench drain H3.9"	C250	39.4	1000	5.4	138	3.9	100		15.5
7000/80	4" BASE Polymer concrete trench drain H3.1"	C250	39.4	1000	5.4	138	3.1	80		14.5
7000/60	4" BASE Polymer concrete trench drain H2.4"	C250	39.4	1000	5.4	138	2.4	60		13.3
7080	4" BASE Polymer concrete inline catch basin	C250	19.7	500	5.4	138	15.4	390		20.5

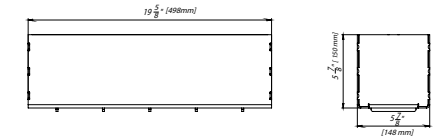
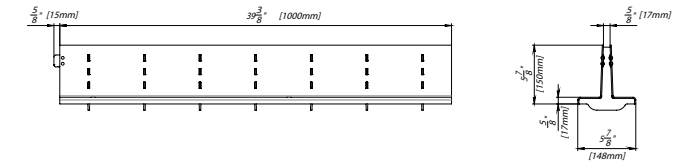
4" Steel SLOT Drain System D400



art. 20975-4-2T-150-D



art. 2097-4-2T-150-D



Article	Name	Load class	Length		Width		Height		Weight lbs
			in	mm	in	mm	in	mm	
20975-4-2T-150-D	4" Stainless steel SLOT drain clean out system	D400	19.6	498	5.8	148	5.9	150	27.6
2097-4-2T-150-D	4" Stainless steel SLOT drain	D400	39.4	1000	5.8	148	5.9	150	24.0

4" PRO Polymer concrete Channels



art. 70171

art. 70071

art. 70671

art. 70871

Article	Name	Load class	Length		Width		Height		Weight	
			in	mm	in	mm	in	mm	lbs	kgs
70171	4" PRO Polymer concrete trench drain H3.9"	D400	39.4	1000	6.3	160	3.9	100	33.1	15
70071	4" PRO Polymer concrete trench drain H8.3"	D400	39.4	1000	6.3	160	8.3	210	48.5	22
70671	4" PRO Polymer concrete trench drain H10.2"	D400	39.4	1000	6.3	160	10.2	260	57.3	26
70871	4" PRO Polymer concrete inline catch basin	D400	19.7	500	6.3	160	19.7	500	62.8	28.5

SLOT 150

6" Steel SLOT Drain System A15

art. 2217-1T-25
art. 22175-1T-25

art. 2217-1T-100
art. 22175-1T-100

art. 2217-1L-100
art. 22175-1L-100

! The Heel Proof Cap can be used with all Slots.

art. 6965 art. 6965-KD art. 6965-PD art. 6965-BD

Article	Name	Load class	Length		Width		Height		Weight	
			in	mm	in	mm	in	mm	lbs	
2217-1T-100	6" Galvanized steel SLOT drain	A15	39.3	998	7.3	186	3.9	100	11.0	
2297-1T-100	6" Stainless steel SLOT drain	A15	39.3	998	7.3	186	3.9	100	11.0	
22175-1T-100	6" Galvanized steel SLOT trap assembly drain	A15	19.6	499	7.4	189	3.9	100	13.5	
22975-1T-100	6" Stainless steel SLOT trap assembly drain	A15	19.6	499	7.4	189	3.9	100	13.5	
2217-1T-25	6" Galvanized steel micro SLOT drain	A15	39.3	998	7.3	186	1.0	25	6.7	
2297-1T-25	6" Stainless steel micro SLOT drain	A15	39.3	998	7.3	186	1.0	25	6.7	
22175-1T-25	6" Galvanized steel SLOT trap assembly micro drain	A15	19.6	499	7.4	189	1.0	25	6.2	
22975-1T-25	6" Stainless steel micro SLOT trap assembly drain	A15	19.6	499	7.4	189	1.0	25	6.2	
2217-1L-100	6" Galvanized steel wall SLOT drain	A15	39.3	998	7.7	196	3.9	100	9.9	
2297-1L-100	6" Stainless steel wall SLOT drain	A15	39.3	998	7.7	196	3.9	100	9.9	
22175-1L-100	6" Galvanized steel wall SLOT trap assembly drain	A15	19.6	499	8.1	206	3.9	98	10.4	
22975-1L-100	6" Stainless steel wall SLOT trap assembly drain	A15	19.6	499	8.1	206	3.9	98	10.4	
6965	Heel proof cap SLOT	A15	39.3	998	1.1	28	0.9	22	1.1	
6965-KD	Heel proof cap rain	A15	39.3	998	1.1	28	0.9	22	1.1	
6965-PD	Heel proof cap palm trees	A15	39.3	998	1.1	28	0.9	22	1.1	
6965-BD	Heel proof cap palm bubble	A15	39.3	998	1.1	28	0.9	22	1.1	

6" BASE Channels

art. 7200/100

art. 7200/150

art. 7280

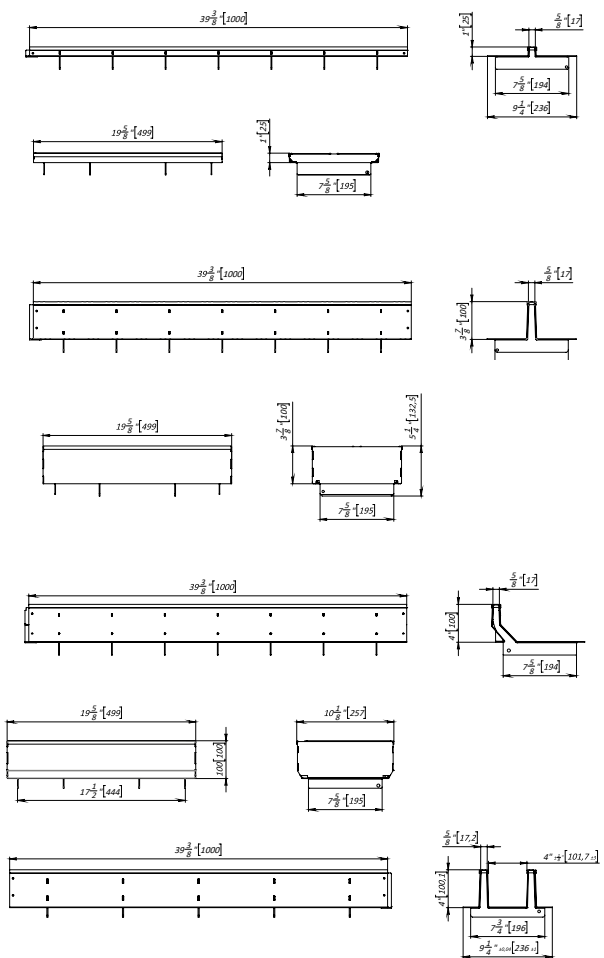
! More options available. See page 50.



	Article	Name	Load class	Length		Width		Height		Weight	
				in	mm	in	mm	in	mm	lbs	kgs
Polymer concrete	7200/100	6" BASE Polymer concrete trench drain 3.9"	C250	39.4	1000	7.4	188	3.9	100	30.7	13.92
	7200/150	6" BASE Polymer concrete trench drain 5.9"	C250	39.4	1000	7.4	188	5.9	150	22.8	10.36
	7280	6" BASE Polymer concrete inline catch basin	C250	19.7	500	7.4	188	15.4	390	23.4	10.61

SLOT 200

8" Steel SLOT Drain System A15



Article	Name	Load class	Length		Width		Height		Weight	
			in	mm	in	mm	in	mm	lbs	kgs
2517-1T-100	8" Galvanized steel SLOT drain	A15	39.3	998	7.3	186	3.9	100	11.0	
2597-1T-100	8" Stainless steel SLOT drain	A15	39.3	998	7.3	186	3.9	100	11.0	
25175-1T-100	8" Galvanized steel SLOT trap assembly drain	A15	19.6	499	7.4	189	3.9	100	13.5	
25975-1T-100	8" Stainless steel SLOT trap assembly drain	A15	19.6	499	7.4	189	3.9	100	13.5	
2517-1T-25	8" Galvanized steel micro SLOT drain	A15	39.3	998	7.3	186	1.0	25	6.7	
2597-1T-25	8" Stainless steel micro SLOT drain	A15	39.3	998	7.3	186	1.0	25	6.7	
25175-1T-25	8" Galvanized steel SLOT trap assembly micro drain	A15	19.6	499	7.4	189	1.0	25	6.2	
25975-1T-25	8" Stainless steel micro SLOT trap assembly drain	A15	19.6	499	7.4	189	1.0	25	6.2	
2517-1L-100	8" Galvanized steel wall SLOT drain	A15	39.3	998	7.7	196	3.9	100	9.9	
2597-1L-100	8" Stainless steel wall SLOT drain	A15	39.3	998	7.7	196	3.9	100	9.9	
25175-1L-100	8" Galvanized steel wall SLOT trap assembly drain	A15	19.6	499	8.1	206	3.9	98	10.4	
25975-1L-100	8" Stainless steel wall SLOT trap assembly drain	A15	19.6	499	8.1	206	3.9	98	10.4	
6965	Heel proof cap SLOT	A15	39.3	998	1.1	28	0.9	22	1.1	
6965-KD	Heel proof cap rain dropp	A15	39.3	998	1.1	28	0.9	22	1.1	
6965-PD	Heel proof cap palm trees	A15	39.3	998	1.1	28	0.9	22	1.1	
6965-BD	Heel proof cap palm bubble	A15	39.3	998	1.1	28	0.9	22	1.1	
2517-1TT-100	8" Galvanized steel double SLOT drain	A15	39.3	998	9.3	236	3.9	100	17.9	
2597-1TT-100	8" Stainless steel double SLOT drain	A15	39.3	998	9.3	236	3.9	100	17.9	

8" BASE Channels

Plastic

Polymer concrete

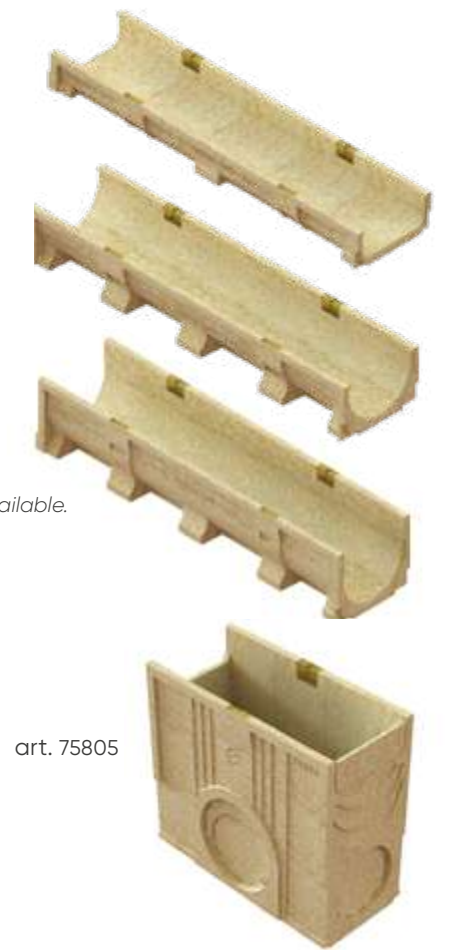
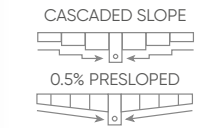


art. 7500/100

art. 7500/150

art. 7500/200

More options available. See page 54.

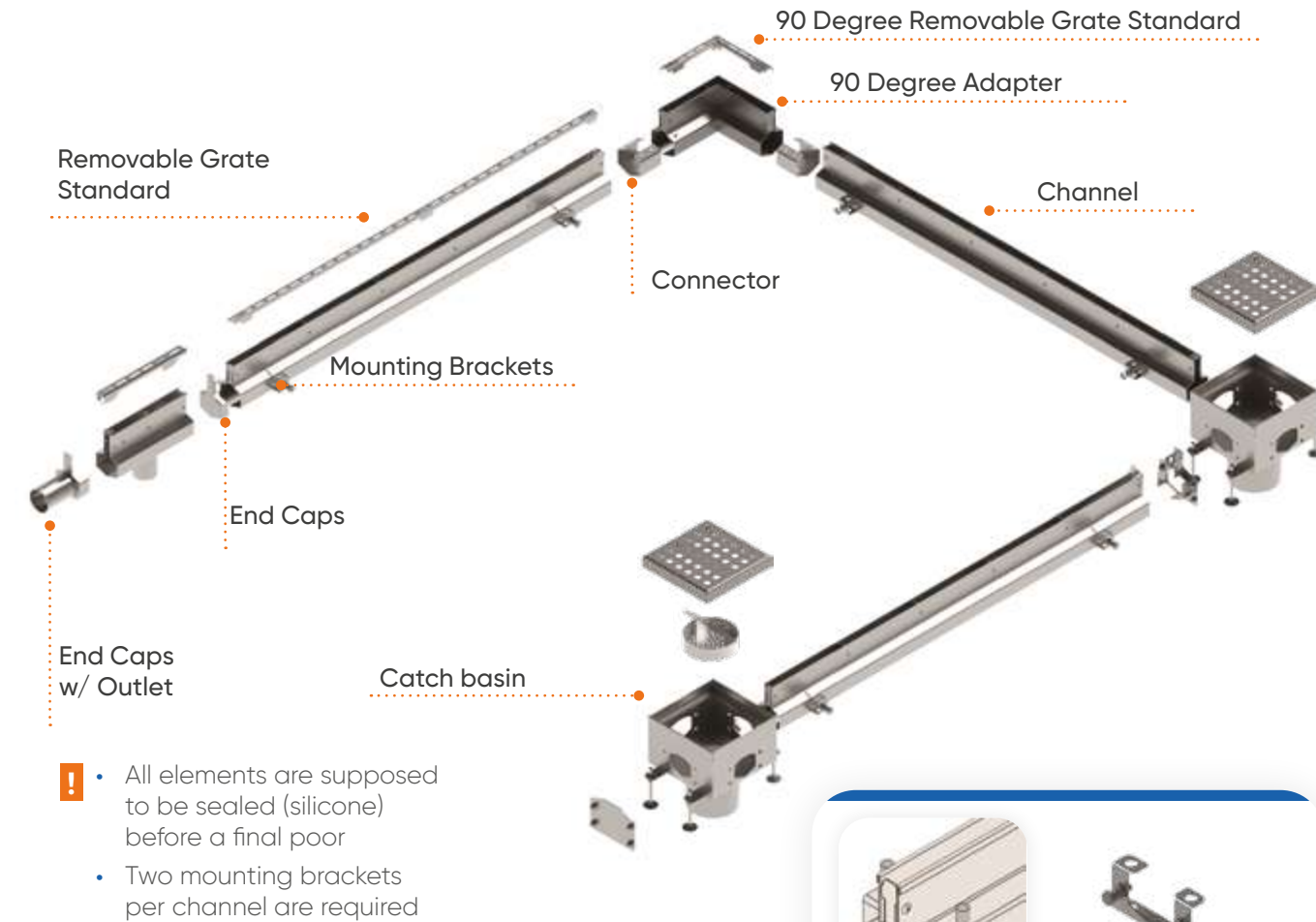


art. 75805

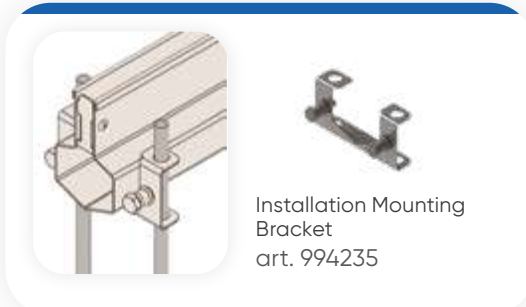
Article	Name	Load class	Length		Width		Height		Weight	
			in	mm	in	mm	in	mm	lbs	kgs
8540-UA	8" BASE Plastic trench drain	C250	39.4	1000	10.2	260	7.9	200	6.9	3.15
Polymer concrete	7500/100	8" BASE Polymer concrete 3.9"	39.4	1000	9.4	238	3.9	100	38.7	17.55
	7500/150	8" BASE Polymer concrete 5.9"	39.4	1000	9.4	238	5.9	150	28.1	12.73
	7500/200	8" BASE Polymer concrete 7.9"	39.4	1000	9.4	238	7.9	200	44.8	20.32
	75805	8" BASE Polymer concrete inline catch basin	C250	19.7	500	9.4	238	17.3	440	29.8

Mini SLOT drain system

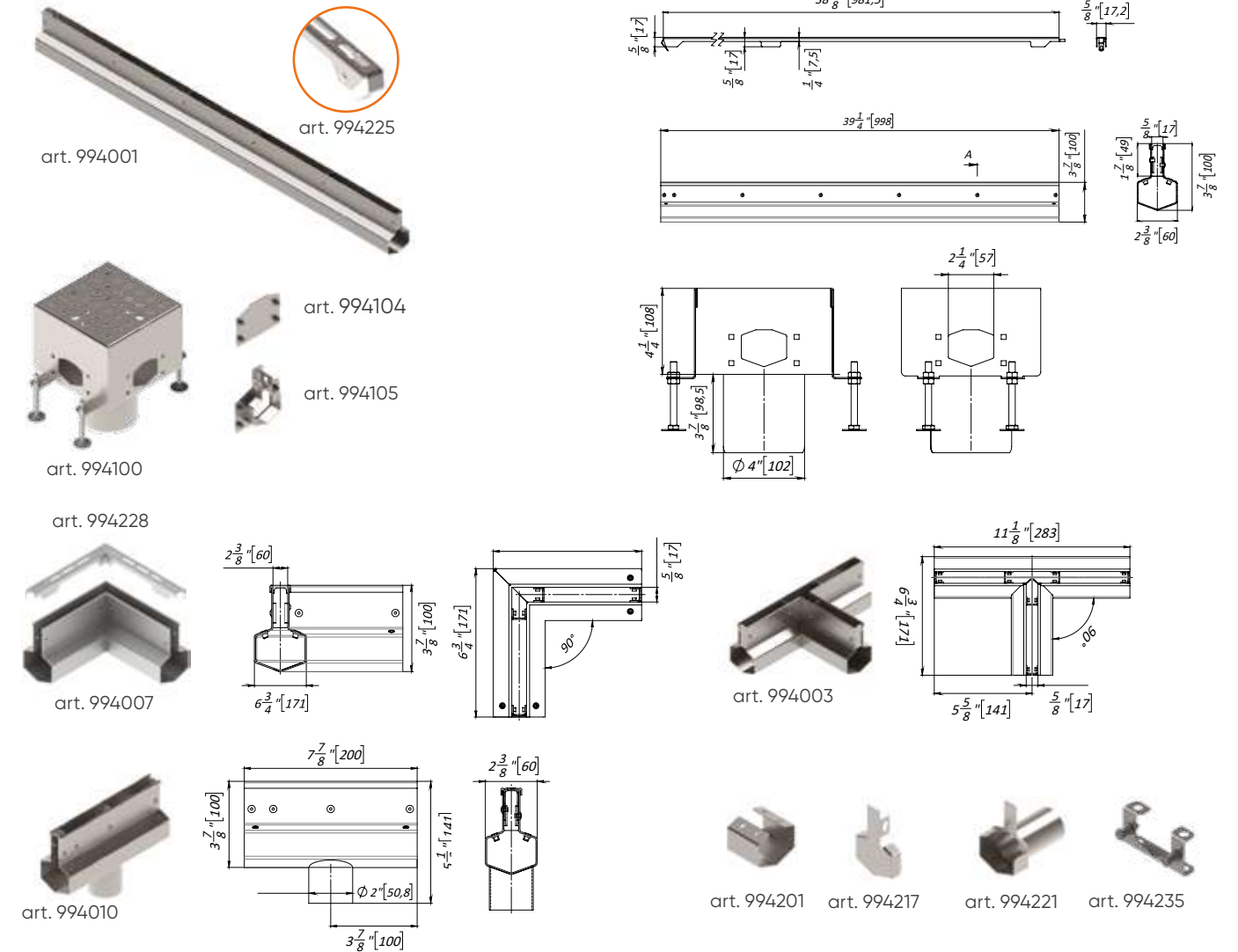
The Mini SLOT Drain System is our new line of SLOT drains designed to be an all-in-one channel/SLOT system made completely from stainless steel. This makes the entire system resistant to both corrosion and exposure to chemicals. In buildings where quality, beauty, and functionality are top of mind, it is crucial to have the appropriate drainage solutions that mimic their surroundings. The purpose of a micro or mini channel drain is it to act as an effective drainage system that takes up minimal space and looks seamless. This product is the perfect pool or patio SLOT drain, but it has many other applications.



- All elements are supposed to be sealed (silicone) before a final pour
- Two mounting brackets per channel are required

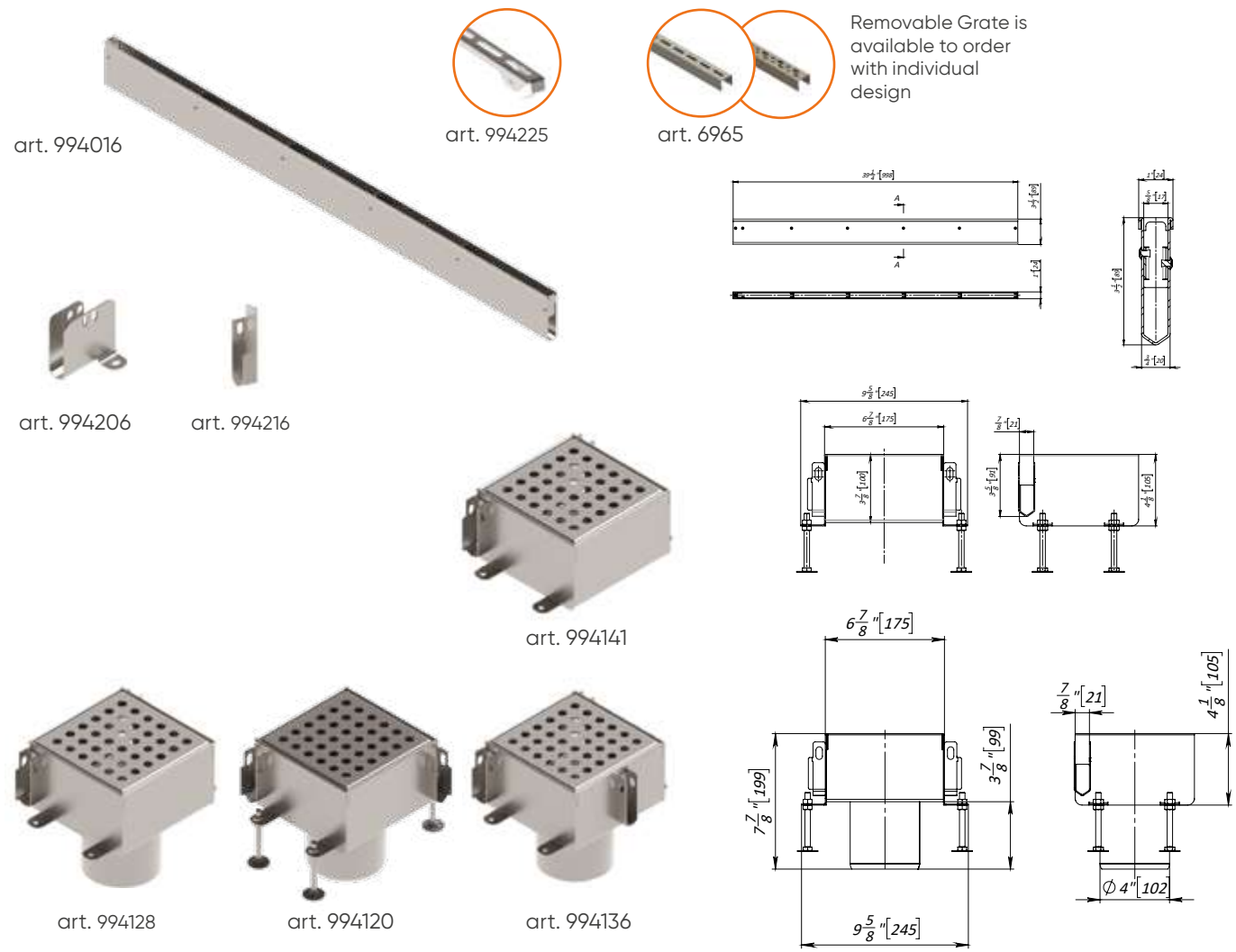


Mini SLOT Channel

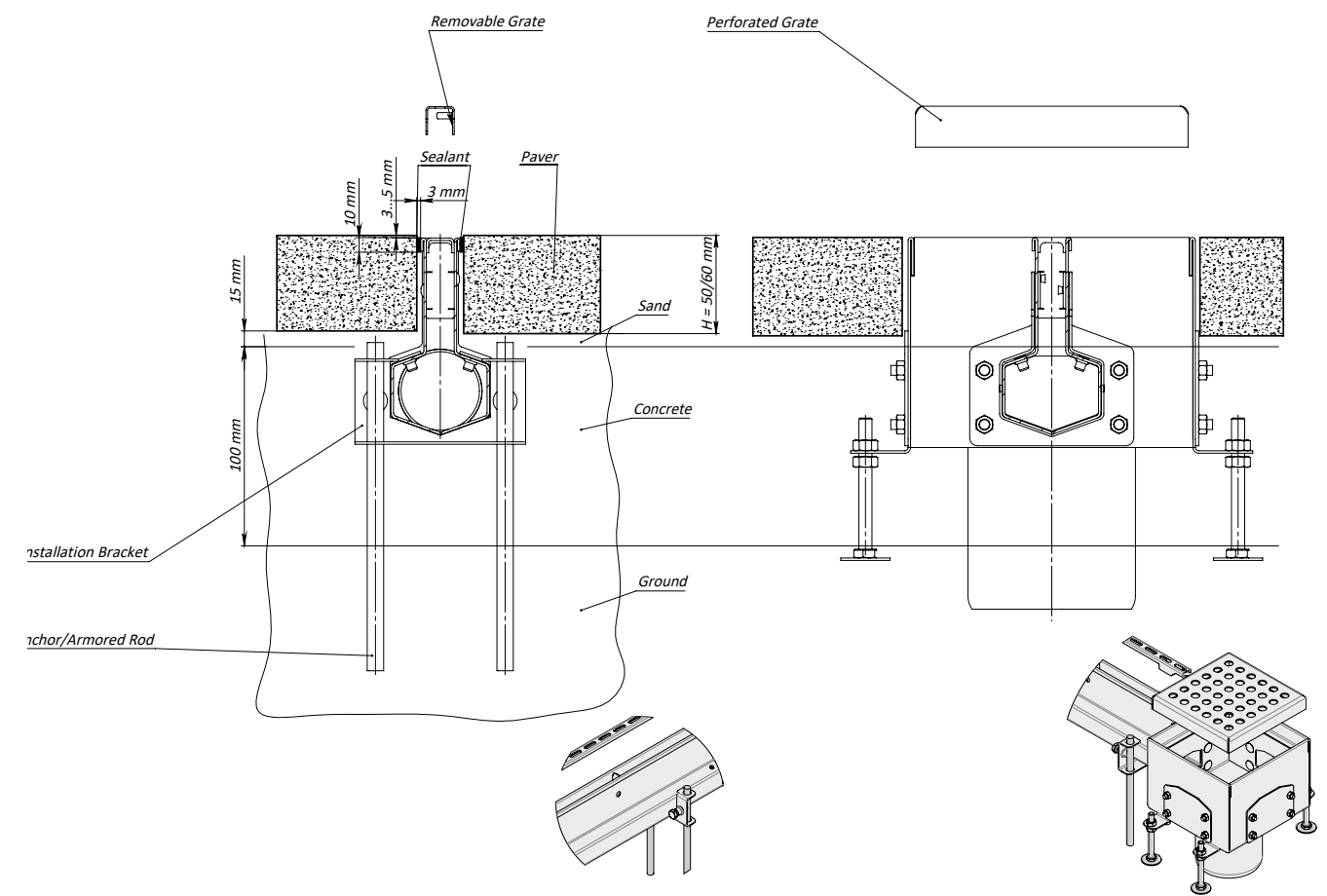


Article	Name	Load class	Length		Width		Height		Weight	
			in	mm	in	mm	in	mm	lbs	kgs
Channel										
994001	Stainless steel mini SLOT trench drain	C250	39.3	998	2.4	60	3.9	100	7.6	3.46
994010	Stainless steel mini SLOT trench drain with vertical outlet	C250	7.9	200	2.4	60	3.9	100	1.7	0.79
Basin										
994100	Stainless steel mini SLOT catch basin	C250	6.9	175	6.9	175	4.3	108	4.4	1.98
Connector										
994201	Stainless steel mini SLOT connector		2.2	55	2.5	64	52.8	2.1	0.25	0.11
Adapter										
994007	Stainless steel mini SLOT 90-degree adapter	C250	6.8	171.4	2.4	60	3.9	100	2.2	2.24
994228	Stainless mini SLOT 90 degree adapter grate	C250	5.9	149.4	0.7	17	0.7	17	0.3	0.15
994003	Stainless steel mini SLOT T-shape adapter	C250	11.4	283	23.6	60	39.3	100	3.1	1.4
Removable grate										
994227	Stainless removable mini SLOT cover	C250	19.7	500	0.7	17	0.7	17	0.2	
994225	Stainless removable mini SLOT cover	C250	39.4	1000	0.7	17	0.7	17	0.5	
End Cap										
994217	Stainless mini SLOT end cap	-	2.4	60	0.6	16	3.9	100	0.1	
994221	Stainless mini SLOT end cap w/ outlet	-	3.1	78	0.6	16	3.9	100	0.5	
Other										
994235	Installation Mounting Bracket for Drain Channel Mini SLOT	-	-	-	4.1	104	2.4	52	0.24	0.11

Mini SLOT Slim Channel



Installation

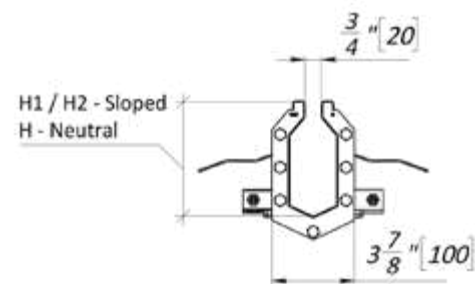
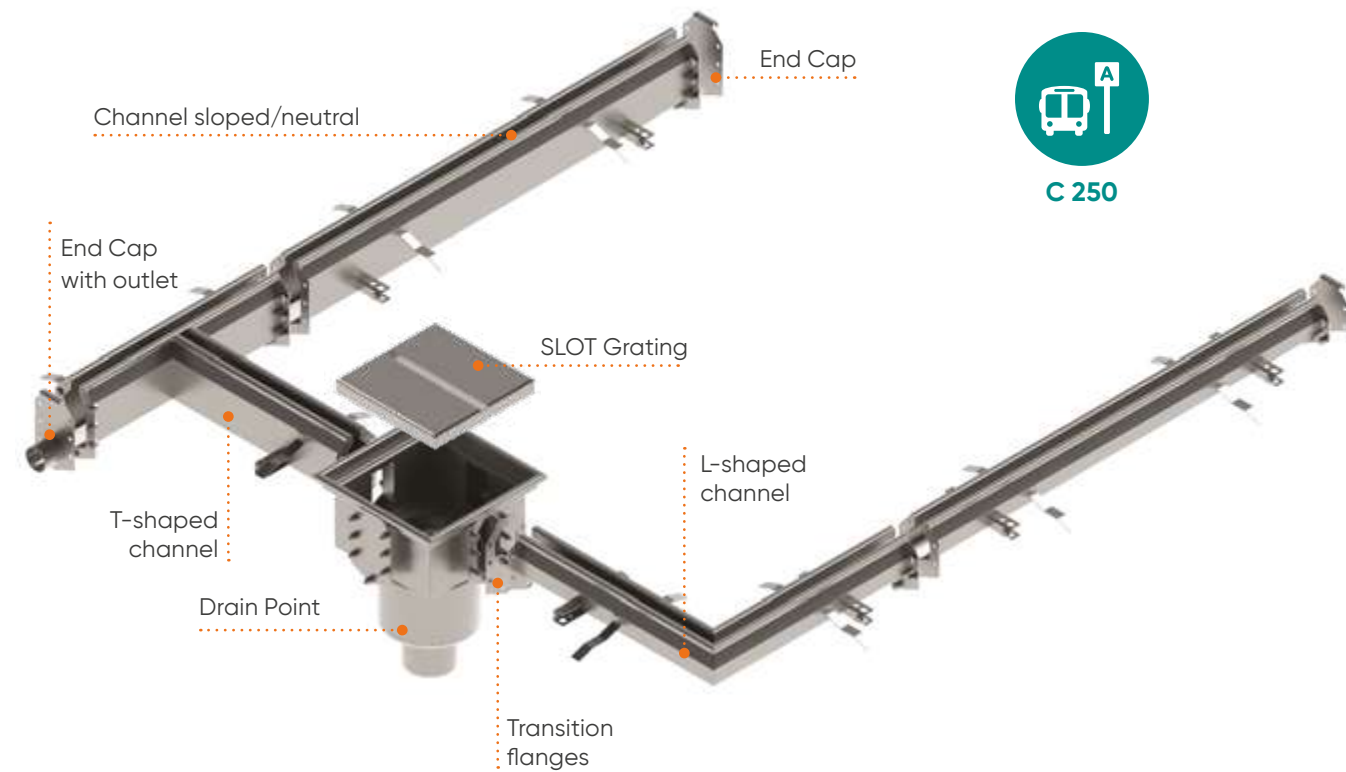


Article	Name	Length, in	Width, in	Height, in	Weight, lb
Channel					
994016	Stainless Steel Drain Channel Mini SLOT Slim H90	39.3	1.0	3.5	5.5
994017	Mini Slim SLOT Channel Half	19.7	1.0	3.5	2.8
Grate					
994226	Inside Grate for Mini SLOT	19.7	0.7	0.7	0.2
994225	Inside Grate for Mini SLOT	39.4	0.7	0.7	0.5
6965	Mini SLOT Removable Grate Standard	39.4	1.1	0.9	1.1
6965-P	Mini SLOT Removable Grate Standard	19.7	1.1	0.9	0.6
Accessories					
994206	Mini Slim SLOT Channel Connector	2.0	0.8	3.0	0.3
994216	Mini Slim SLOT Channel End Cap	0.8	0.8	3.5	0.04
Drain Point					
994141	Stainless Steel Clean-out for Mini SLOT Slim	6.8	6.8	4.1	4.0
994128	Mini Slim SLOT Basin Straight Through w/ outlet	6.8	6.8	4.1	4.6
994120	Mini Slim SLOT Basin 90 Degree with outlet	6.8	6.8	4.1	4.6
994136	Mini Slim SLOT Basin Three Sides with outlet	6.8	6.8	4.1	4.6

STAINLESS slot drain system

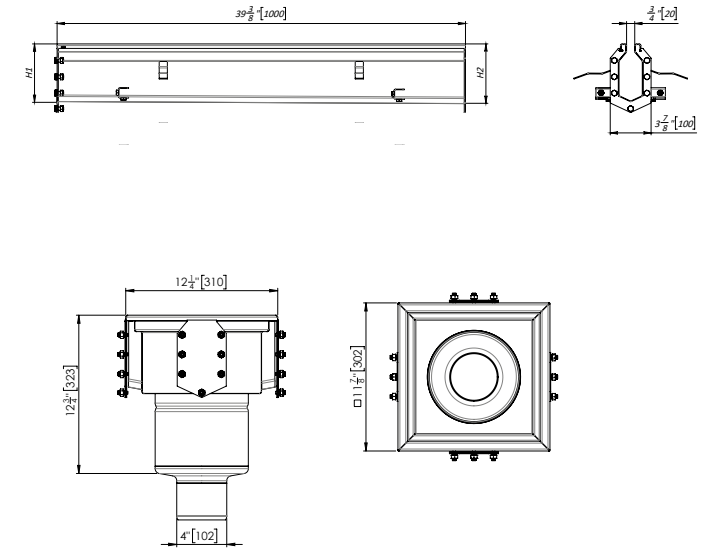
STAINLESS slot drain is the modular channel drain (with 2" wide interior) that has a functional and esthetical design for installation into concrete floors, making it a practical solution. With its grate-free design of the channel drain and despite the narrow slot, it is easy to clean and maintain.

Used anywhere, where hygiene and corrosion protection are important: Pharmaceutical industries, Laboratories, Chemical industries, Professional kitchens, Food processing facilities, Brewing, Warehouses, Restaurants, Hospitals, schools, hotels



Flange gasket
It is possible to use gaskets instead of liquid sealant to improve the waterproofing and facilitate installation.

4" STAINLESS slot drain system



PRE SLOPED

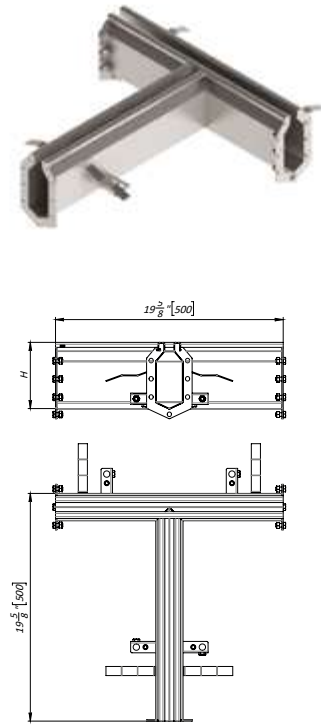
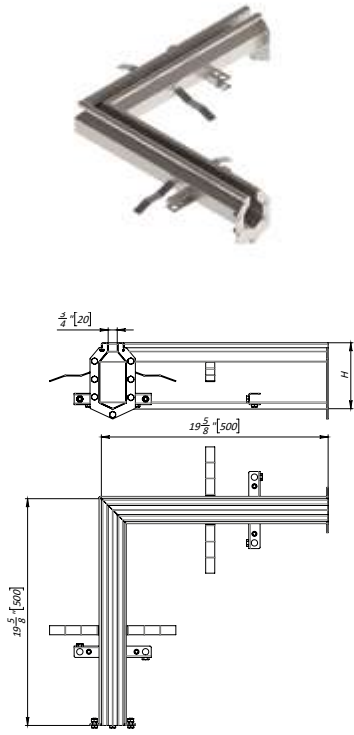
Article	Name	H1, in	H2, in	W, lb	
1	992001	4" Channel sloped 01	2.8	3.0	7.8
2	992002	4" Channel sloped 02	3.0	3.1	8.0
3	992003	4" Channel sloped 03	3.1	3.3	8.3
4	992004	4" Channel sloped 04	3.3	3.5	8.6
5	992005	4" Channel sloped 05	3.5	3.7	8.9
6	992006	4" Channel sloped 06	3.7	3.9	9.2
7	992007	4" Channel sloped 07	3.9	4.1	9.5
8	992008	4" Channel sloped 08	4.1	4.3	9.8
9	992009	4" Channel sloped 09	4.3	4.5	10.1
10	992010	4" Channel sloped 10	4.5	4.7	10.4
11	992011	4" Channel sloped 11	4.7	4.9	10.6
12	992012	4" Channel sloped 12	4.9	5.1	10.9
13	992013	4" Channel sloped 13	5.1	5.3	11.3
14	992014	4" Channel sloped 14	5.3	5.5	11.5
15	992015	4" Channel sloped 15	5.5	5.7	11.7

NEUTRAL

Article	Name	H, in	W, lb	
1	992021	4" Channel neutral 01	3.0	7.9
2	992022	4" Channel neutral 02	3.1	8.1
3	992023	4" Channel neutral 03	3.3	8.4
4	992024	4" Channel neutral 04	3.5	8.8
5	992025	4" Channel neutral 05	3.7	9.0
6	992026	4" Channel neutral 06	3.9	9.3
7	992027	4" Channel neutral 07	4.1	9.5
8	992028	4" Channel neutral 08	4.3	10.0
9	992029	4" Channel neutral 09	4.5	10.3
10	992030	4" Channel neutral 10	4.7	10.5
11	992031	4" Channel neutral 11	4.9	10.7
12	992032	4" Channel neutral 12	5.1	11.2
13	992033	4" Channel neutral 13	5.3	11.4
14	992034	4" Channel neutral 14	5.5	11.6
15	992035	4" Channel neutral 15	5.7	11.9

4" Drain Point

Article	Name	H, in	W, lb
992193	Drain Point 12"x12" with vertical outlet 4"	16.5	15.7



4" L-shaped channel

Article	Name	H, in	W, lbs	
1	992041	4" L-shaped channel 01	3.0	7.6
2	992042	4" L-shaped channel 02	3.2	7.8
3	992043	4" L-shaped channel 03	3.4	8.1
4	992044	4" L-shaped channel 04	3.5	8.5
5	992045	4" L-shaped channel 05	3.7	8.7
6	992046	4" L-shaped channel 06	3.9	8.9
7	992047	4" L-shaped channel 07	4.1	9.1
8	992048	4" L-shaped channel 08	4.3	9.6
9	992049	4" L-shaped channel 09	4.5	9.8
10	992050	4" L-shaped channel 10	4.7	10.1
11	992051	4" L-shaped channel 11	4.9	10.3
12	992052	4" L-shaped channel 12	5.1	10.7
13	992053	4" L-shaped channel 13	5.3	10.9
14	992054	4" L-shaped channel 14	5.5	11.2
15	992055	4" L-shaped channel 15	5.7	11.4

4" T-shaped channel

Article	Name	H, in	W, lbs	
1	992061	4" T-shaped channel 01	3.0	8.1
2	992062	4" T-shaped channel 02	3.2	8.2
3	992063	4" T-shaped channel 03	3.4	8.4
4	992064	4" T-shaped channel 04	3.5	8.9
5	992065	4" T-shaped channel 05	3.7	9.1
6	992066	4" T-shaped channel 06	3.9	9.3
7	992067	4" T-shaped channel 07	4.1	9.5
8	992068	4" T-shaped channel 08	4.3	10.1
9	992069	4" T-shaped channel 09	4.5	10.3
10	992070	4" T-shaped channel 10	4.7	10.5
11	992071	4" T-shaped channel 11	4.9	10.7
12	992072	4" T-shaped channel 12	5.1	11.2
13	992073	4" T-shaped channel 13	5.3	11.4
14	992074	4" T-shaped channel 14	5.5	11.6
15	992075	4" T-shaped channel 15	5.7	11.7

4" End Cap

Article	Name	For Channel Height, in
992101	Type A	3.0 - 3.4
992102	Type B	3.5 - 4.1
992103	Type C	4.3 - 4.9
992104	Type D	5.1 - 5.7

4" End Cap with horizontal outlet 2"

Article	Name	For Channel Height, in
992120	Type A	3.0 - 3.4
992121	Type B	3.5 - 4.1
992122	Type C	4.3 - 4.9
992123	Type D	5.1 - 5.7

4" Transition Flange

Article	Name	For Channel Height, in
992107	Type A	3.0 - 3.4
992108	Type B	3.5 - 4.1
992109	Type C	4.3 - 4.9





Vodaland Canada Inc.
5900 Ambler Drive, Unit 1 & 2, Mississauga, ON L4W 2N3
+1 (905) 238 1771

VODALAND.CA

