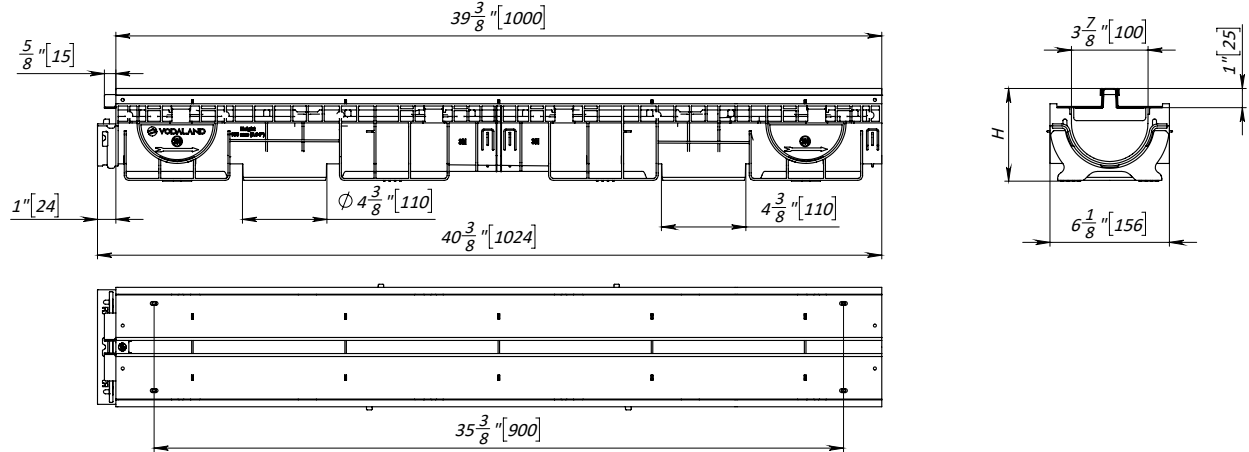


SLOT 100P SYSTEM - LOAD CLASS A15-C250

SLOT DRAIN, MICRO



General: The surface drainage system shall be Vodaland Canada SLOT 100P Micro consisting of slot drain component and BASE 100P polypropylene plastic channel body as manufactured by Vodaland or approved equal.

Slot specification: The slot drain shall be 39.3" (998mm) long and have 0.67" (17mm) wide slot with 3.7" (94mm) throat and 0.98" (25mm) height. The slot drain shall be manufactured from 304 stainless steel or galvanized steel per specifier's requirement. The slot shall have a T shape and be rated load class C250 per EN1433 load specification.

Channel specification: Channel body shall be 39.4" (1000mm) long and the nominal clear opening shall be 4" (100mm) with 6.1" (156mm) overall width. Channels shall be manufactured from UV stabilized 100% recycled polypropylene. Units shall have male-to-female interlocking joints that will not separate during the installation. Channels shall have a radiused self cleaning bottom with a Manning's coefficient of 0.009 and 1% or neutral 0% built in slope. Channels shall withstand load class C250 as per EN1433.

Notes:

1. See flow rate chart for channel flow rates.

Neutral channels

Name	Item #	H, in	H, mm	W, lb
4" BASE neutral channel H2.36"	80060	2.36	60	2.4
4" BASE neutral channel H3.15"	80080	3.15	80	2.7
4" BASE neutral channel H3.94"	80100	3.94	100	3
4" BASE neutral channel H4.72"	80120	4.72	120	3.6
4" BASE neutral channel H5.83"	80150	5.83	148	4.3
4" BASE neutral channel H7.87"	80200	7.87	200	5.4

SLOT 100P SYSTEM - LOAD CLASS A15-C250
SLOT DRAIN, MICRO
1% slope channels

Name	Item #	H1, in	H1, mm	H2, in	H2, mm	W, lb
4" BASE sloped channel 1	80080-1	1.65	42	1.97	50	2.7
4" BASE sloped channel 2	80090-2	1.97	50	2.36	60	3
4" BASE sloped channel 3	80100-3	2.36	60	2.76	70	3.1
4" BASE sloped channel 4	80110-4	2.76	70	3.15	80	3.6
4" BASE sloped channel 5	80120-5	3.15	80	3.54	88	3.7
4" BASE sloped channel 6	80130-6	3.54	90	3.94	100	3.9
4" BASE sloped channel 7	80140-7	3.94	100	4.33	110	4
4" BASE sloped channel 8	80150-8	4.33	110	4.72	120	4
4" BASE sloped channel 9	80160-9	4.72	120	5.12	130	4.6
4" BASE sloped channel 10	80170-10	5.12	130	5.47	139	4.8
4" BASE sloped channel 11	80180-11	5.47	139	5.83	148	5
4" BASE sloped channel 12	80190-12	5.83	148	6.18	157	5.2
4" BASE sloped channel 13	80200-13	6.18	157	6.54	166	5.4

Notes:

1. Each channel has two bottom outlets Ø110mm.
2. Channels feature 90-degree connection on each side.
3. Slopes of less than 1% can be achieved using both neutral and sloped channels.

Flow rate chart, 1% slope

Channel item #	GPM		L/s	
	70% water fill	100% water fill	70% water fill	100% water fill
80080-1	51.20	83.85	3.23	5.29
80090-2	61.82	100.65	3.9	6.35
80100-3	65.62	111.59	4.14	7.04
80110-4	76.08	130.13	4.8	8.21
80120-5	90.19	152.64	5.69	9.63
80130-6	106.20	177.37	6.7	11.19
80140-7	123.32	203.36	7.78	12.83
80150-8	141.23	229.99	8.91	14.51
80160-9	158.66	255.83	10.01	16.14
80170-10	175.94	281.34	11.1	17.75
80180-11	193.06	306.70	12.18	19.35
80190-12	210.49	332.07	13.28	20.95
80200-13	227.77	357.43	14.37	22.55

REVISED: 2023

SLOT 100P SYSTEM - LOAD CLASS A15-C250
SLOT DRAIN, MICRO
Slot drain options

Name	Item #	Load class
Galvanized steel micro slot drain	2017-1T-25	A15-C250
Stainless steel micro slot drain	2097-1T-25	A15-C250
Stainless steel cap (ADA/Heel-proof)	6965	A15-C250
Stainless steel cap (Rain drop)	6965-KD	A15-C250

Notes:

- For detailed grate drawings refer to Vodaland Canada website or consult with one of our professionals.

End caps

Channel name	End cap item #		End cap w/ outlet item #
	H1, shallow inv.	H2, deep inv.	
4" BASE sloped channel 1	630060	630-1	6308-1
4" BASE sloped channel 2	630-1	630-1	6308-1
4" BASE sloped channel 3	630-1	630-2	6308-2
4" BASE sloped channel 4	630-2	630-2	6308-2
4" BASE sloped channel 5	630-2	630-2	6308-2
4" BASE sloped channel 6	630-2	630-2	6308-3
4" BASE sloped channel 7	630-2	630-2	6308-3
4" BASE sloped channel 8	630-2	630-2	6308-3
4" BASE sloped channel 9	630-3	630-3	6308-4
4" BASE sloped channel 10	630-3	630-3	6308-4
4" BASE sloped channel 11	630-3	630-3	6308-4
4" BASE sloped channel 12	630-3	630-3	6308-4
4" BASE sloped channel 13	630-3	630-3	6308-4

Other accessories

Name	Item #
Mounting brackets	6104
Rebar bracket supports	RBR10G-450
4" PVC pipe adapter	6815-4

REVISED: 2023