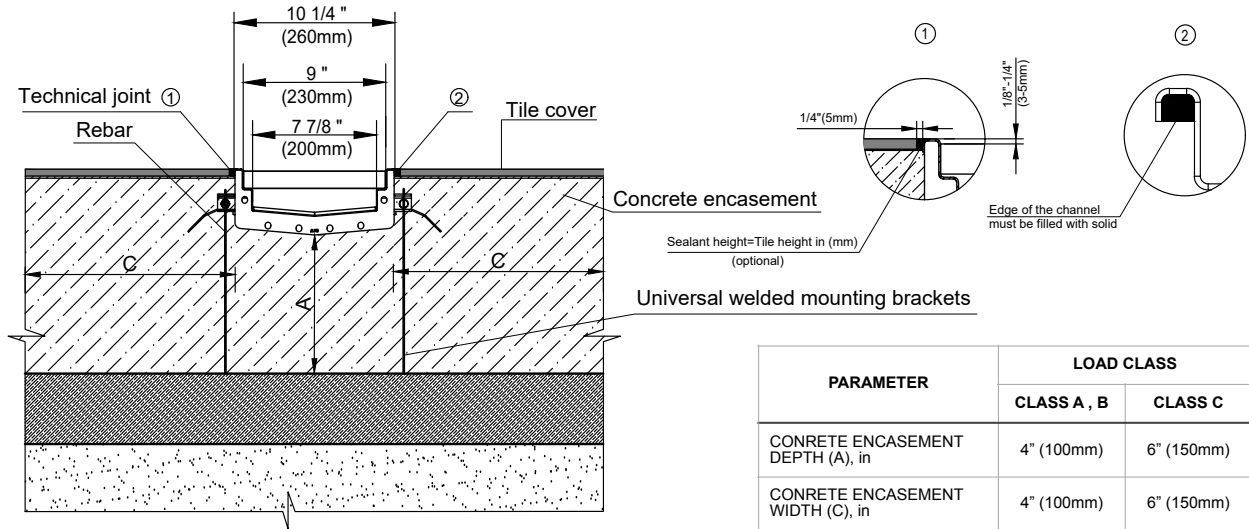


**STAINLESS 200 SYSTEM - LOAD CLASS A15-C250**  
ENCLOSED TILE PAVEMENT INSTALLATION

**8" (200mm) STAINLESS STEEL TRENCH DRAIN**



PARAMETER	LOAD CLASS	
	CLASS A , B	CLASS C
CONCRETE ENCASEMENT DEPTH (A), in	4" (100mm)	6" (150mm)
CONCRETE ENCASEMENT WIDTH (C), in	4" (100mm)	6" (150mm)

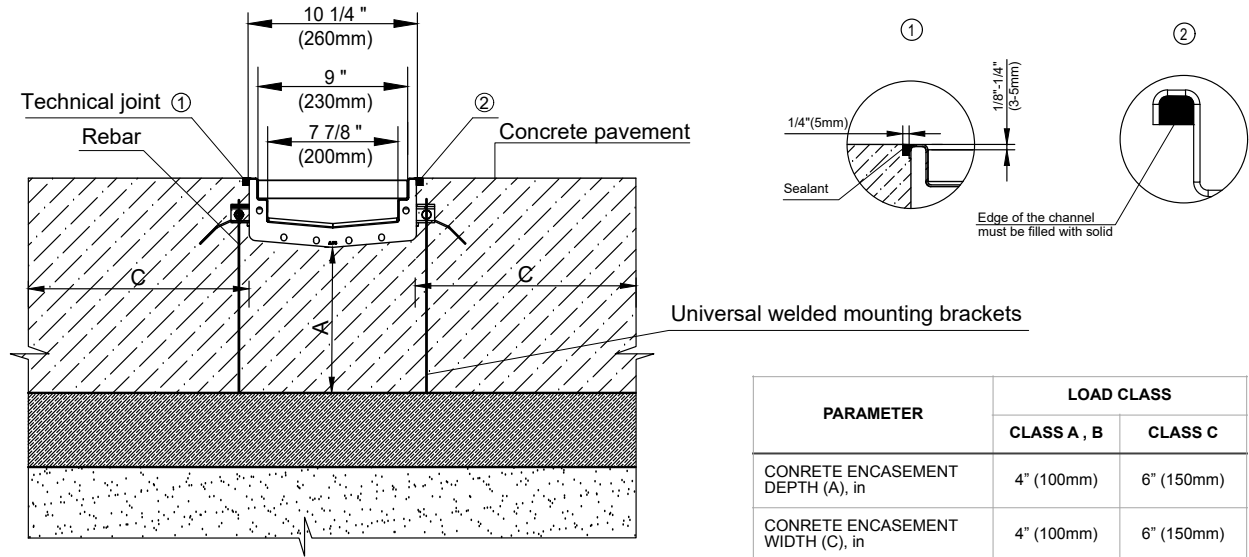
**NOTES:**

1. SPECIFIER IS RESPONSIBLE FOR CONCRETE ENCASEMENT AND REINFORCING BASED UPON APPLICATION AND LOCAL CODES.
2. IN OUTDOOR INSTALLATIONS, TO COMPENSATE FOR TEMPERATURE EFFECTS AND DEFORMATION FLUCTUATIONS OF THE ADJACENT COATING, IT IS RECOMMENDED TO ARRANGE TEMPERATURE EXPANSION JOINTS ALONG THE EDGE OF THE CHANNEL.
3. CONCRETE SHOULD BE VIBRATED TO REMOVE AIR POCKETS.
4. THIS INSTALLATION SCHEME IS A RECOMMENDATION. CONSULT WITH THE MANUFACTURER FOR INSTALLATION INSTRUCTIONS.
5. THE FINISHED LEVEL OF CONCRETE SURROUND SHOULD BE 1/8" - 3/16" (3-5mm) ABOVE THE TOP OF THE CHANNEL EDGE.
6. CAN BE INSTALLED IN EXISTING CONCRETE SLAB. ENGINEERING ADVICE MAY BE REQUIRED.

**GENERAL:** THE TRENCH DRAIN SHALL BE VODALAND CANADA STAINLESS 200 AS MANUFACTURED BY VODALAND OR APPROVED EQUAL.

**SPECIFICATION:** STAINLESS 200 TRENCH DRAIN SHALL BE 39.4" (1000mm) LONG AND THE NOMINAL CLEAR OPENING SHALL BE 8" (200mm) WITH 10.2" (260mm) OVERALL WIDTH. CHANNELS HAVE A SECURE BOLTED, FLANGED CONNECTION BETWEEN SECTIONS AND WILL NOT SEPARATE DURING THE INSTALLATION. CHANNELS SHALL HAVE LEVELING STUDS STANDARD TO SECURE TRENCH IN ITS FINAL LOCATION. CHANNELS SHALL BE MADE OF GRADE 304 16GA STAINLESS STEEL. UNITS CAN BE MANUFACTURED FROM GRADE 316 STAINLESS STEEL UPON REQUEST. STAINLESS 200 TRENCH DRAIN SHALL HAVE A V SHAPED BOTTOM AND 1% OR NEUTRAL 0% BUILT IN SLOPE. EACH UNIT SHALL COME WITH GRADE 304 STAINLESS STEEL GRATE. CHANNELS AND GRATE SHALL WITHSTAND A REQUIRED EN1433 LOAD CLASS. THE PRODUCT IS CERTIFIED AND FULLY COMPLIANT TO EN1253 AND EN1433.

THE COMPLETE DRAINAGE SYSTEM SHALL BE BY VODALAND CANADA INC. ANY DEVIATION OR PARTIAL SYSTEM DESIGN AND/OR IMPROPER INSTALLATION WILL VOID ANY AND ALL WARRANTIES PROVIDED BY VODALAND CANADA INC.

**STAINLESS 200 SYSTEM - LOAD CLASS A15-C250**  
**EXPOSED CONCRETE PAVEMENT INSTALLATION**
**8" (200mm) STAINLESS STEEL TRENCH DRAIN**


PARAMETER	LOAD CLASS	
	CLASS A, B	CLASS C
CONCRETE ENCASEMENT DEPTH (A), in	4" (100mm)	6" (150mm)
CONCRETE ENCASEMENT WIDTH (C), in	4" (100mm)	6" (150mm)

**NOTES:**

- SPECIFIER IS RESPONSIBLE FOR CONCRETE ENCASEMENT AND REINFORCING BASED UPON APPLICATION AND LOCAL CODES.
- IN OUTDOOR INSTALLATIONS, TO COMPENSATE FOR TEMPERATURE EFFECTS AND DEFORMATION FLUCTUATIONS OF THE ADJACENT COATING, IT IS RECOMMENDED TO ARRANGE TEMPERATURE EXPANSION JOINTS ALONG THE EDGE OF THE CHANNEL.
- CONCRETE SHOULD BE VIBRATED TO REMOVE AIR POCKETS.
- THIS INSTALLATION SCHEME IS A RECOMMENDATION. CONSULT WITH THE MANUFACTURER FOR INSTALLATION INSTRUCTIONS.
- THE FINISHED LEVEL OF CONCRETE SURROUND SHOULD BE 1/8" - 3/16" (3-5mm) ABOVE THE TOP OF THE CHANNEL EDGE.
- CAN BE INSTALLED IN EXISTING CONCRETE SLAB. ENGINEERING ADVICE MAY BE REQUIRED.

**GENERAL:** THE TRENCH DRAIN SHALL BE VODALAND CANADA STAINLESS 200 AS MANUFACTURED BY VODALAND OR APPROVED EQUAL.

**SPECIFICATION:** STAINLESS 200 TRENCH DRAIN SHALL BE 39.4" (1000mm) LONG AND THE NOMINAL CLEAR OPENING SHALL BE 8" (200mm) WITH 10.2" (260mm) OVERALL WIDTH. CHANNELS HAVE A SECURE BOLTED, FLANGED CONNECTION BETWEEN SECTIONS AND WILL NOT SEPARATE DURING THE INSTALLATION. CHANNELS SHALL HAVE LEVELING STUDS STANDARD TO SECURE TRENCH IN ITS FINAL LOCATION. CHANNELS SHALL BE MADE OF GRADE 304 16GA STAINLESS STEEL. UNITS CAN BE MANUFACTURED FROM GRADE 316 STAINLESS STEEL UPON REQUEST. STAINLESS 200 TRENCH DRAIN SHALL HAVE A V SHAPED BOTTOM AND 1% OR NEUTRAL 0% BUILT IN SLOPE. EACH UNIT SHALL COME WITH GRADE 304 STAINLESS STEEL GRATE. CHANNELS AND GRATE SHALL WITHSTAND A REQUIRED EN1433 LOAD CLASS. THE PRODUCT IS CERTIFIED AND FULLY COMPLIANT TO EN1253 AND EN1433.

THE COMPLETE DRAINAGE SYSTEM SHALL BE BY VODALAND CANADA INC. ANY DEVIATION OR PARTIAL SYSTEM DESIGN AND/OR IMPROPER INSTALLATION WILL VOID ANY AND ALL WARRANTIES PROVIDED BY VODALAND CANADA INC.

**REVISED: 2023**