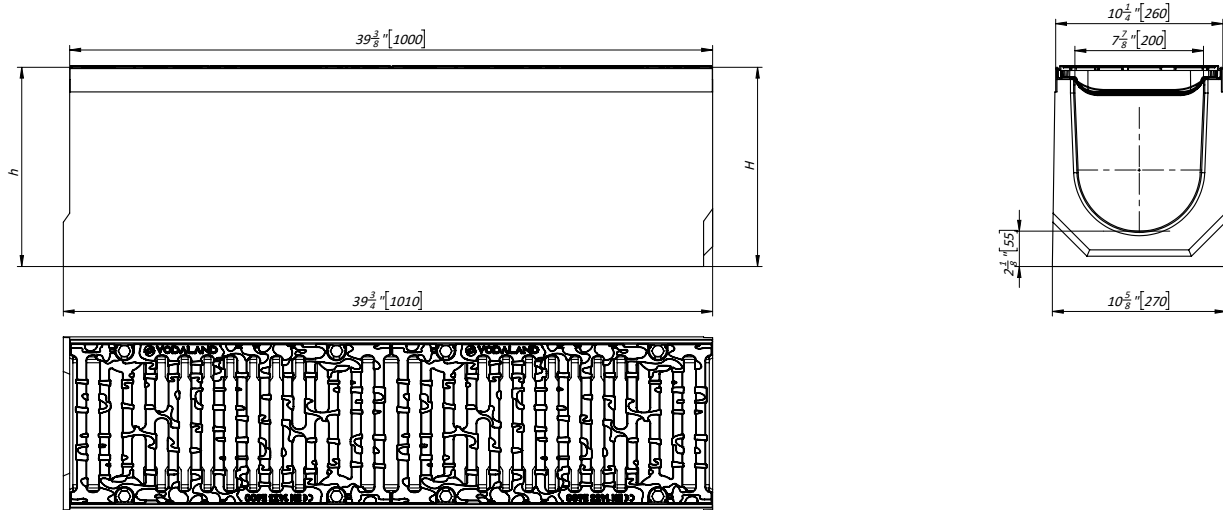


PRO 200FC SYSTEM - LOAD CLASS D400

8" (200mm) PRO FIBER CONCRETE TRENCH DRAIN



General: The trench drain shall be Vodaland Canada PRO 200FC complete with grates as manufactured by Vodaland or approved equal.

Specification: Channels shall be 39.4" (1000mm) long and the nominal clear opening shall be 8" (200mm) with 10.3" (260mm) overall width and built-in slope of 0.5% or 1% per specifier's requirements. Channels shall have male-to-female interlocking joints. Gratings shall be ductile cast iron fastened to steel edge rails and meet system load class specified. Channels and grates shall withstand a required EN1433 load class.

Materials: PRO 200FC trench drain shall be manufactured from fiber reinforced concrete with cast-in galvanized steel edge rails.

Compressive strength:	> 45 Mpa
Flexural strength:	> 20 Mpa
Frost resistant:	Yes
Non Flammable:	Yes
UV Resistant:	Yes
Recyclable 150%:	Yes
Dilute acid and alkali resistant:	Yes
Material free of VOC, biocides, heavy metals:	Yes
Water absorption is sufficient for adhesion with concrete surfaces:	Yes

Notes:

1. See flow rate chart for channel flow rates.

PRO 200FC SYSTEM - LOAD CLASS D400

8" (200mm) PRO FIBER CONCRETE TRENCH DRAIN

Neutral slope

Name	Item #	H, in	H, mm	W, lb
PRO 200FC trench drain H7.9"	045071334/200	7.9	200	190.0
PRO 200FC trench drain H8.1"	045071334/205	8.1	205	191.6
PRO 200FC trench drain H8.3"	045071334/210	8.3	210	193.3
PRO 200FC trench drain H8.5"	045071334/215	8.5	215	194.9
PRO 200FC trench drain H8.7"	045071334/220	8.7	220	196.6
PRO 200FC trench drain H8.9"	045071334/225	8.9	225	198.2
PRO 200FC trench drain H9.1"	045071334/230	9.1	230	199.9
PRO 200FC trench drain H9.3"	045071334/235	9.3	235	201.5
PRO 200FC trench drain H9.4"	045071334/240	9.4	240	203.2
PRO 200FC trench drain H9.6"	045071334/245	9.6	245	204.9
PRO 200FC trench drain H9.8"	045071334/250	9.8	250	206.5
PRO 200FC trench drain H10"	045071334/255	10	255	208.2
PRO 200FC trench drain H10.2"	045071334/260	10.2	260	209.8
PRO 200FC trench drain H10.4"	045071334/265	10.4	265	211.4
PRO 200FC trench drain H10.6"	045071334/270	10.6	270	213.5
PRO 200FC trench drain H10.8"	045071334/275	10.8	275	214.8
PRO 200FC trench drain H11"	045071334/280	11	280	216.4
PRO 200FC trench drain H11.2"	045071334/285	11.2	285	218.1
PRO 200FC trench drain H11.4"	045071334/290	11.4	290	219.7
PRO 200FC trench drain H11.6"	045071334/295	11.6	295	221.4
PRO 200FC trench drain H11.8"	045071334/300	11.8	300	223.0
PRO 200FC trench drain H12"	045071334/305	12	305	224.7
PRO 200FC trench drain H12.2"	045071334/310	12.2	310	226.3
PRO 200FC trench drain H12.4"	045071334/315	12.4	315	228.0
PRO 200FC trench drain H12.6"	045071334/320	12.6	320	229.7
PRO 200FC trench drain H12.8"	045071334/325	12.8	325	231.3
PRO 200FC trench drain H13"	045071334/330	13	330	233.0
PRO 200FC trench drain H13.2"	045071334/335	13.2	335	234.6
PRO 200FC trench drain H13.4"	045071334/340	13.4	340	236.3
PRO 200FC trench drain H13.6"	045071334/345	13.6	345	237.9
PRO 200FC trench drain H13.8"	045071334/350	13.8	350	239.6
PRO 200FC trench drain H14"	045071334/355	14	355	241.2
PRO 200FC trench drain H14.2"	045071334/360	14.2	360	242.9

PRO 200FC SYSTEM - LOAD CLASS D400
8" (200mm) PRO FIBER CONCRETE TRENCH DRAIN
0.5% slope

Name	Article	H, in	H, mm	h, in	h, mm	W, lb
PRO 200FC trench drain H8.1"-7.9"	045071334/205-200	8.1	205	7.9	200	194.0
PRO 200FC trench drain H8.3"-8.1"	045071334/210-205	8.3	210	8.1	205	195.7
PRO 200FC trench drain H8.5"-8.3"	045071334/165-160	8.5	215	8.3	210	197.3
PRO 200FC trench drain H8.7"-8.5"	045071334/170-165	8.7	220	8.5	215	198.9
PRO 200FC trench drain H8.9"-8.7"	045071334/175-170	8.9	225	8.7	220	200.6
PRO 200FC trench drain H9.1"-8.9"	045071334/180-175	9.1	230	8.9	225	202.2
PRO 200FC trench drain H9.3"-9.1"	045071334/185-180	9.3	235	9.1	230	203.8
PRO 200FC trench drain H9.5"-9.3"	045071334/190-185	9.5	240	9.3	235	205.4
PRO 200FC trench drain H9.6"-9.4"	045071334/195-190	9.6	245	9.4	240	207.1
PRO 200FC trench drain H9.8"-9.6"	045071334/200-195	9.8	250	9.6	245	208.7
PRO 200FC trench drain H10"-9.8"	045071334/205-200	10	255	9.8	250	210.3
PRO 200FC trench drain H10.2"-10"	045071334/210-205	10.2	260	10	255	212.0
PRO 200FC trench drain H10.4"-10.2"	045071334/215-210	10.4	265	10.2	260	213.6
PRO 200FC trench drain H10.6"-10.4"	045071334/220-215	10.6	270	10.4	265	215.2
PRO 200FC trench drain H10.8"-10.6"	045071334/225-220	10.8	275	10.6	270	216.9
PRO 200FC trench drain H11"-10.8"	045071334/230-225	11	280	10.8	275	218.5
PRO 200FC trench drain H11.2"-11"	045071334/235-230	11.2	285	11	280	220.1
PRO 200FC trench drain H11.4"-11.2"	045071334/240-235	11.4	290	11.2	285	221.8
PRO 200FC trench drain H11.6"-11.4"	045071334/245-240	11.6	295	11.4	290	223.4
PRO 200FC trench drain H11.8"-11.6"	045071334/250-245	11.8	300	11.6	295	225.0
PRO 200FC trench drain H12"-11.8"	045071334/255-250	12	305	11.8	300	226.7
PRO 200FC trench drain H12.2"-12"	045071334/260-255	12.2	310	12	305	228.3
PRO 200FC trench drain H12.4"-12.2"	045071334/265-260	12.4	315	12.2	310	229.9
PRO 200FC trench drain H12.6"-12.4"	045071334/270-265	12.6	320	12.4	315	231.6
PRO 200FC trench drain H12.8"-12.6"	045071334/275-270	12.8	325	12.6	320	233.2
PRO 200FC trench drain H13"-12.8"	045071334/280-275	13	330	12.8	325	234.8
PRO 200FC trench drain H13.2"-13"	045071334/285-280	13.2	335	13	330	236.4
PRO 200FC trench drain H13.4"-13.2"	045071334/290-285	13.4	340	13.2	335	238.1
PRO 200FC trench drain H13.6"-13.4"	045071334/295-290	13.6	345	13.4	340	239.7
PRO 200FC trench drain H13.8"-13.6"	045071334/300-295	13.8	350	13.6	345	241.3
PRO 200FC trench drain H14"-13.8"	045071334/305-300	14	355	13.8	350	243.0
PRO 200FC trench drain H14.2"-14"	045071334/310-305	14.2	360	14	355	244.6

Notes:

1. Each channel can have a bottom outlet Ø110mm

REVISED: 2024

PRO 200FC SYSTEM - LOAD CLASS D400
8" (200mm) PRO FIBER CONCRETE TRENCH DRAIN
1% slope

Name	Article	H, in	H, mm	h, in	h, mm	W, lb
PRO 200FC trench drain H14.2"-13.8"	042071334/360-350	14.2	360	13.8	350	244.6
PRO 200FC trench drain H13.8"-13.4"	042071334/350-340	13.8	350	13.4	340	241.3
PRO 200FC trench drain H13.4"-13"	042071334/340-330	13.4	340	13	330	238.1
PRO 200FC trench drain H13"-12.6"	042071334/330-320	13	330	12.6	320	234.8
PRO 200FC trench drain H12.6"-12.2"	042071334/320-310	12.6	320	12.2	310	231.6
PRO 200FC trench drain H12.2"-11.8"	042071334/310-300	12.2	310	11.8	300	228.3
PRO 200FC trench drain H11.8"-11.4"	042071334/300-290	11.8	300	11.4	290	225.0
PRO 200FC trench drain H11.4"-11"	042071334/290-280	11.4	290	11	280	221.8
PRO 200FC trench drain H11"-10.6"	042071334/280-270	11	280	10.6	270	218.5
PRO 200FC trench drain H10.6"-10.2"	042071334/270-260	10.6	270	10.2	260	215.2
PRO 200FC trench drain H10.2"-9.8"	042071334/260-250	10.2	260	9.8	250	212.0
PRO 200FC trench drain H9.8"-9.4"	042071334/250-240	9.8	250	9.4	240	208.7
PRO 200FC trench drain H9.4"-9.1"	042071334/240-230	9.4	240	9.1	230	205.4
PRO 200FC trench drain H9.1"-8.7"	042071334/230-220	9.1	230	8.7	220	202.2
PRO 200FC trench drain H8.7"-8.3"	042071334/220-210	8.7	220	8.3	210	198.9
PRO 200FC trench drain H8.3"-7.9"	042071334/210-200	8.3	210	7.9	200	195.7

REVISED: 2024

PRO 200FC SYSTEM - LOAD CLASS D400

8" (200mm) PRO FIBER CONCRETE TRENCH DRAIN

Flow rate chart, 0.5% slope

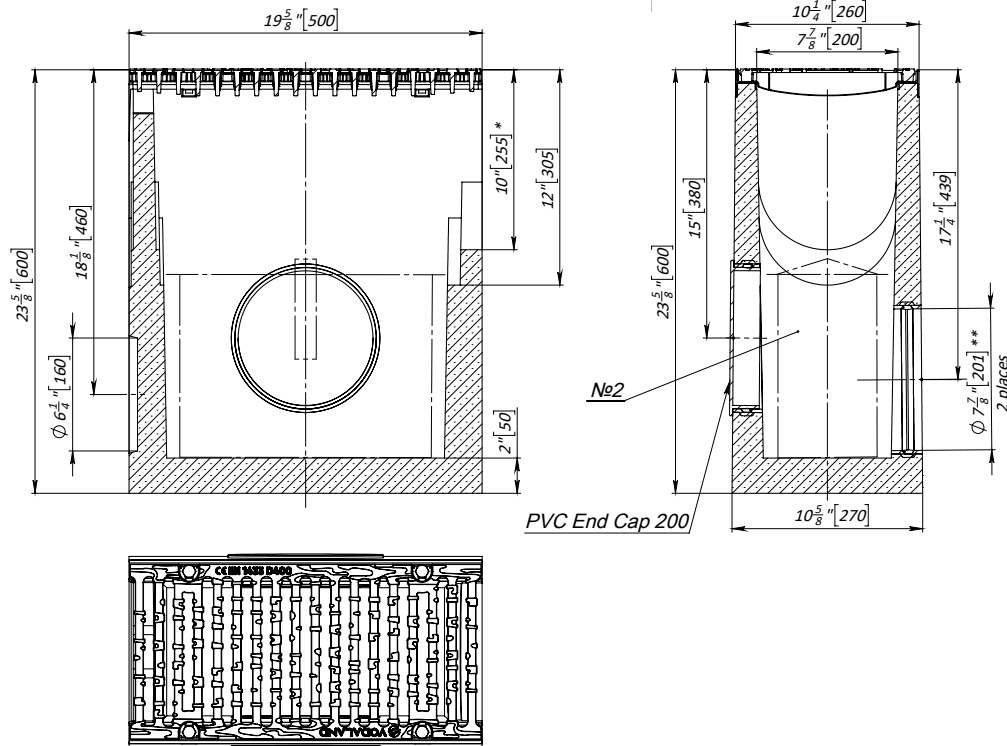
Channel item #	GPM		L/s	
	70% water fill	100% water fill	70% water fill	100% water fill
045071334/210	139.32	251.86	8.79	15.89
045071334/260	239.97	405.29	15.14	25.57
045071334/310	343	563.8	21.64	35.57
045071334/360	455.54	724.99	28.74	45.74

Flow rate chart, 1% slope

Channel item #	GPM		L/s	
	70% water fill	100% water fill	70% water fill	100% water fill
045071334/210	139.32	251.86	8.79	15.89
045071334/260	239.97	405.29	15.14	25.57
045071334/310	343	563.8	21.64	35.57
045071334/360	455.54	724.99	28.74	45.74

PRO 200FC SYSTEM - LOAD CLASS D400

8" (200mm) PRO FIBER CONCRETE INLINE CATCH BASIN



General: The Inline catch basin shall be Vodaland Canada PRO 200FC complete with grates as manufactured by Vodaland or approved equal.

Specification: Catch Basin shall be 19.7" (500mm) long and the nominal clear opening shall be 8" (100mm) with 10.2" (260mm) overall width. Gratings shall be ductile cast iron fastened to steel edge rails and meet system load class specified. Channels and grates shall withstand a required EN1433 load class.

Materials: PRO 200FC Catch Basin shall be manufactured from fiber reinforced concrete with cast-in galvanized steel edge rails.

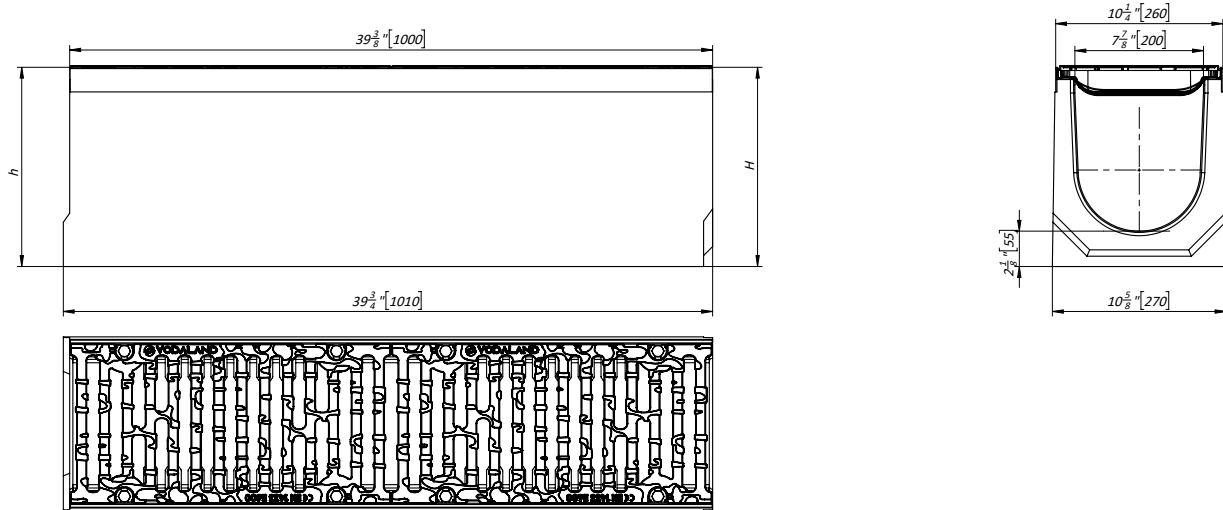
Compressive strength:	> 45 Mpa
Flexural strength:	> 20 Mpa
Frost resistant:	Yes
Non Flammable:	Yes
UV Resistant:	Yes
Recyclable 100%:	Yes
Dilute acid and alkali resistant:	Yes
Material free of VOC, biocides, heavy metals:	Yes
Water absorption is sufficient for adhesion with concrete surfaces:	Yes

Name	Article	H, in	H, mm	W, lb
PRO 200FC inline catch basin w/ outlet	045871334-P200	23.6	600	181.2
PRO 200FC inline catch basin w/ basket	045871334-P200-K	23.6	600	187.4

REVISED: 2024

PRO 200FC SYSTEM - LOAD CLASS E600

8" (200mm) PRO FIBER CONCRETE TRENCH DRAIN



General: The trench drain shall be Vodaland Canada PRO 200FC complete with grates as manufactured by Vodaland or approved equal.

Specification: Channels shall be 39.4" (1000mm) long and the nominal clear opening shall be 8" (200mm) with 10.3" (260mm) overall width and built-in slope of 0.5% or 1% per specifier's requirements. Channels shall have male-to-female interlocking joints. Gratings shall be ductile cast iron fastened to steel edge rails and meet system load class specified. Channels and grates shall withstand a required EN1433 load class.

Materials: PRO 200FC trench drain shall be manufactured from fiber reinforced concrete with cast-in galvanized steel edge rails.

Compressive strength:	> 45 Mpa
Flexural strength:	> 20 Mpa
Frost resistant:	Yes
Non Flammable:	Yes
UV Resistant:	Yes
Recyclable 150%:	Yes
Dilute acid and alkali resistant:	Yes
Material free of VOC, biocides, heavy metals:	Yes
Water absorption is sufficient for adhesion with concrete surfaces:	Yes

Notes:

1. See flow rate chart for channel flow rates.

PRO 200FC SYSTEM - LOAD CLASS E600
8" (200mm) PRO FIBER CONCRETE TRENCH DRAIN
Neutral slope

Name	Item #	H, in	H, mm	W, lb
PRO 200FC trench drain H7.9"	04507155/200	7.9	200	193.7
PRO 200FC trench drain H8.1"	04507155/205	8.1	205	195.4
PRO 200FC trench drain H8.3"	04507155/210	8.3	210	197.0
PRO 200FC trench drain H8.5"	04507155/215	8.5	215	198.7
PRO 200FC trench drain H8.7"	04507155/220	8.7	220	200.3
PRO 200FC trench drain H8.9"	04507155/225	8.9	225	202.0
PRO 200FC trench drain H9.1"	04507155/230	9.1	230	203.6
PRO 200FC trench drain H9.3"	04507155/235	9.3	235	205.3
PRO 200FC trench drain H9.4"	04507155/240	9.4	240	206.9
PRO 200FC trench drain H9.6"	04507155/245	9.6	245	208.6
PRO 200FC trench drain H9.8"	04507155/250	9.8	250	210.3
PRO 200FC trench drain H10"	04507155/255	10	255	211.9
PRO 200FC trench drain H10.2"	04507155/260	10.2	260	213.6
PRO 200FC trench drain H10.4"	04507155/265	10.4	265	215.2
PRO 200FC trench drain H10.6"	04507155/270	10.6	270	216.9
PRO 200FC trench drain H10.8"	04507155/275	10.8	275	218.5
PRO 200FC trench drain H11"	04507155/280	11	280	220.2
PRO 200FC trench drain H11.2"	04507155/285	11.2	285	221.8
PRO 200FC trench drain H11.4"	04507155/290	11.4	290	223.5
PRO 200FC trench drain H11.6"	04507155/295	11.6	295	225.1
PRO 200FC trench drain H11.8"	04507155/300	11.8	300	226.8
PRO 200FC trench drain H12"	04507155/305	12	305	228.4
PRO 200FC trench drain H12.2"	04507155/310	12.2	310	230.1
PRO 200FC trench drain H12.4"	04507155/315	12.4	315	231.7
PRO 200FC trench drain H12.6"	04507155/320	12.6	320	233.4
PRO 200FC trench drain H12.8"	04507155/325	12.8	325	235.1
PRO 200FC trench drain H13"	04507155/330	13	330	236.7
PRO 200FC trench drain H13.2"	04507155/335	13.2	335	238.4
PRO 200FC trench drain H13.4"	04507155/340	13.4	340	240.0
PRO 200FC trench drain H13.6"	04507155/345	13.6	345	241.7
PRO 200FC trench drain H13.8"	04507155/350	13.8	350	243.3
PRO 200FC trench drain H14"	04507155/355	14	355	245.0
PRO 200FC trench drain H14.2"	04507155/360	14.2	360	246.6

REVISED: 2024

PRO 200FC SYSTEM - LOAD CLASS E600
8" (200mm) PRO FIBER CONCRETE TRENCH DRAIN
0.5% slope

Name	Article	H, in	H, mm	h, in	h, mm	W, lb
PRO 200FC trench drain H8.1"-7.9"	04507155/205-200	8.1	205	7.9	200	190.5
PRO 200FC trench drain H8.3"-8.1"	04507155/210-205	8.3	210	8.1	205	192.4
PRO 200FC trench drain H8.5"-8.3"	04507155/215-210	8.5	215	8.3	210	194.2
PRO 200FC trench drain H8.7"-8.5"	04507155/220-215	8.7	220	8.5	215	196.1
PRO 200FC trench drain H8.9"-8.7"	04507155/225-220	8.9	225	8.7	220	198.0
PRO 200FC trench drain H9.1"-8.9"	04507155/230-225	9.1	230	8.9	225	199.8
PRO 200FC trench drain H9.3"-9.1"	04507155/235-230	9.3	235	9.1	230	201.7
PRO 200FC trench drain H9.5"-9.3"	04507155/240-235	9.5	240	9.3	235	203.6
PRO 200FC trench drain H9.6"-9.4"	04507155/245-240	9.6	245	9.4	240	205.5
PRO 200FC trench drain H9.8"-9.6"	04507155/250-245	9.8	250	9.6	245	207.3
PRO 200FC trench drain H10"-9.8"	04507155/255-250	10	255	9.8	250	209.2
PRO 200FC trench drain H10.2"-10"	04507155/260-255	10.2	260	10	255	211.1
PRO 200FC trench drain H10.4"-10.2"	04507155/265-260	10.4	265	10.2	260	213.0
PRO 200FC trench drain H10.6"-10.4"	04507155/270-265	10.6	270	10.4	265	214.8
PRO 200FC trench drain H10.8"-10.6"	04507155/275-270	10.8	275	10.6	270	216.7
PRO 200FC trench drain H11"-10.8"	04507155/280-275	11	280	10.8	275	218.6
PRO 200FC trench drain H11.2"-11"	04507155/285-280	11.2	285	11	280	220.5
PRO 200FC trench drain H11.4"-11.2"	04507155/290-285	11.4	290	11.2	285	222.3
PRO 200FC trench drain H11.6"-11.4"	04507155/295-290	11.6	295	11.4	290	224.2
PRO 200FC trench drain H11.8"-11.6"	04507155/300-295	11.8	300	11.6	295	226.1
PRO 200FC trench drain H12"-11.8"	04507155/305-300	12	305	11.8	300	228.0
PRO 200FC trench drain H12.2"-12"	04507155/310-305	12.2	310	12	305	229.8
PRO 200FC trench drain H12.4"-12.2"	04507155/315-310	12.4	315	12.2	310	231.7
PRO 200FC trench drain H12.6"-12.4"	04507155/320-315	12.6	320	12.4	315	233.6
PRO 200FC trench drain H12.8"-12.6"	04507155/325-320	12.8	325	12.6	320	235.5
PRO 200FC trench drain H13"-12.8"	04507155/330-325	13	330	12.8	325	237.3
PRO 200FC trench drain H13.2"-13"	04507155/335-330	13.2	335	13	330	239.2
PRO 200FC trench drain H13.4"-13.2"	04507155/340-335	13.4	340	13.2	335	241.1
PRO 200FC trench drain H13.6"-13.4"	04507155/345-340	13.6	345	13.4	340	242.9
PRO 200FC trench drain H13.8"-13.6"	04507155/350-345	13.8	350	13.6	345	244.8
PRO 200FC trench drain H14"-13.8"	04507155/355-350	14	355	13.8	350	246.7
PRO 200FC trench drain H14.2"-14"	04507155/360-355	14.2	360	14	355	248.6

Notes:

1. Each channel can have a bottom outlet Ø110mm

REVISED: 2024

PRO 200FC SYSTEM - LOAD CLASS D400
8" (200mm) PRO FIBER CONCRETE TRENCH DRAIN
1% slope

Name	Article	H, in	H, mm	h, in	h, mm	W, lb
PRO 200FC trench drain H14.2"-13.8"	04507155/360-350	14.2	360	13.8	350	248.6
PRO 200FC trench drain H13.8"-13.4"	04507155/350-340	13.8	350	13.4	340	244.8
PRO 200FC trench drain H13.4"-13"	04507155/340-330	13.4	340	13	330	241.1
PRO 200FC trench drain H13"-12.6"	04507155/330-320	13	330	12.6	320	237.3
PRO 200FC trench drain H12.6"-12.2"	04507155/320-310	12.6	320	12.2	310	233.6
PRO 200FC trench drain H12.2"-11.8"	04507155/310-300	12.2	310	11.8	300	229.8
PRO 200FC trench drain H11.8"-11.4"	04507155/300-290	11.8	300	11.4	290	226.1
PRO 200FC trench drain H11.4"-11"	04507155/290-280	11.4	290	11	280	222.3
PRO 200FC trench drain H11"-10.6"	04507155/280-270	11	280	10.6	270	218.3
PRO 200FC trench drain H10.6"-10.2"	04507155/270-260	10.6	270	10.2	260	214.8
PRO 200FC trench drain H10.2"-9.8"	04507155/260-250	10.2	260	9.8	250	211.1
PRO 200FC trench drain H9.8"-9.4"	04507155/250-240	9.8	250	9.4	240	207.3
PRO 200FC trench drain H9.4"-9.1"	04507155/240-230	9.4	240	9.1	230	203.6
PRO 200FC trench drain H9.1"-8.7"	04507155/230-220	9.1	230	8.7	220	199.8
PRO 200FC trench drain H8.7"-8.3"	04507155/220-210	8.7	220	8.3	210	196.1
PRO 200FC trench drain H8.3"-7.9"	04507155/210-200	8.3	210	7.9	200	192.4

REVISED: 2024

PRO 200FC SYSTEM - LOAD CLASS E600
8" (200mm) PRO FIBER CONCRETE TRENCH DRAIN
Flow rate chart, 0.5% slope

Channel item #	GPM		L/s	
	70% water fill	100% water fill	70% water fill	100% water fill
04507155/210	139.32	251.86	8.79	15.89
04507155/260	239.97	405.29	15.14	25.57
04507155/310	343	563.8	21.64	35.57
04507155/360	455.54	724.99	28.74	45.74

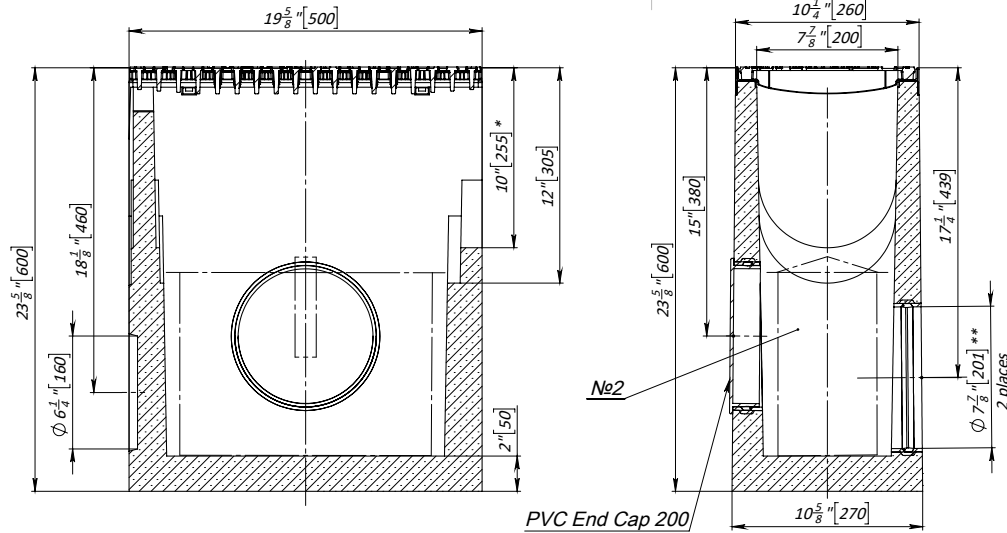
Flow rate chart, 1% slope

Channel item #	GPM		L/s	
	70% water fill	100% water fill	70% water fill	100% water fill
04507155/210	139.32	251.86	8.79	15.89
04507155/260	239.97	405.29	15.14	25.57
04507155/310	343	563.8	21.64	35.57
04507155/360	455.54	724.99	28.74	45.74

REVISED: 2024

PRO 200FC SYSTEM - LOAD CLASS E600

8" (200mm) PRO FIBER CONCRETE INLINE CATCH BASIN



General: The Inline catch basin shall be Vodaland Canada PRO 200FC complete with grates as manufactured by Vodaland or approved equal.

Specification: Catch Basin shall be 19.7" (500mm) long and the nominal clear opening shall be 8" (100mm) with 10.2" (260mm) overall width. Gratings shall be ductile cast iron fastened to steel edge rails and meet system load class specified. Channels and grates shall withstand a required EN1433 load class.

Materials: PRO 200FC Catch Basin shall be manufactured from fiber reinforced concrete with cast-in galvanized steel edge rails.

Compressive strength:	> 45 Mpa
Flexural strength:	> 20 Mpa
Frost resistant:	Yes
Non Flammable:	Yes
UV Resistant:	Yes
Recyclable 100%:	Yes
Dilute acid and alkali resistant:	Yes
Material free of VOC, biocides, heavy metals:	Yes
Water absorption is sufficient for adhesion with concrete surfaces:	Yes

Name	Article	H, in	H, mm	W, lb
PRO 200FC inline catch basin w/ outlet	04587155-P200	23.6	600	181.2
PRO 200FC inline catch basin w/ basket	04587155-P200-K	23.6	600	187.4

REVISED: 2024