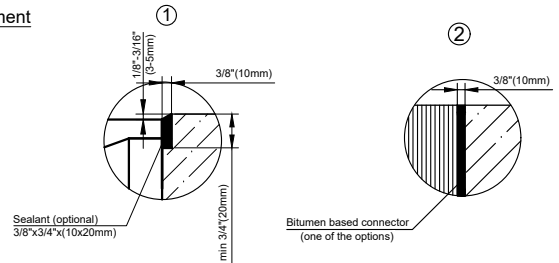
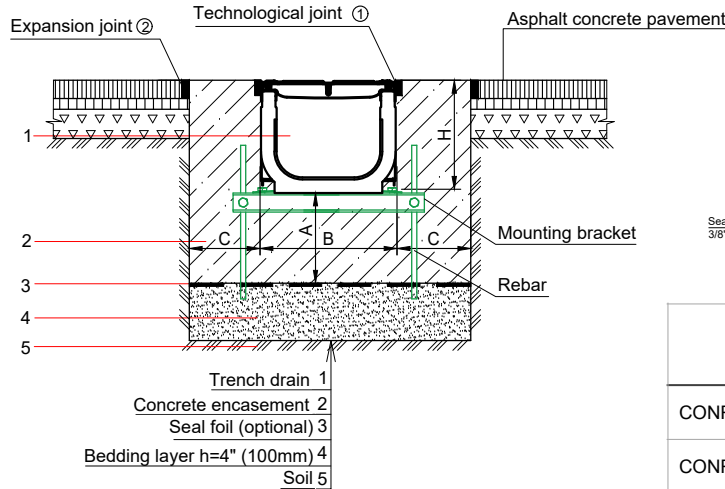


PRO 200P SYSTEM - LOAD CLASS D400
 EXPOSED ASPHALT PAVEMENT INSTALLATION

8" (200mm) PRO PLASTIC TRENCH DRAIN


| PARAMETER | LOAD CLASS |
|-----------------------------------|------------|
| | CLASS D |
| CONCRETE ENCASEMENT DEPTH (A), in | 8" (200mm) |
| CONCRETE ENCASEMENT WIDTH (C), in | 8" (200mm) |

NOTES:

- SPECIFIER IS RESPONSIBLE FOR CONCRETE ENCASEMENT AND REINFORCING BASED UPON APPLICATION AND LOCAL CODES.
- EXPANSION AND CONTRACTION CONTROL JOINTS AND REINFORCEMENT ARE RECOMMENDED TO PROTECT CHANNEL AND CONCRETE SURROUND. ENGINEERING ADVICE MAY BE REQUIRED.
- THIS INSTALLATION SCHEME IS A RECOMMENDATION. CONSULT WITH THE MANUFACTURER FOR INSTALLATION INSTRUCTIONS.
- THE FINISHED LEVEL OF CONCRETE SURROUND SHOULD BE 1/8" - 3/16" (3-5mm) ABOVE THE TOP OF THE CHANNEL EDGE.

GENERAL: THE TRENCH DRAIN SHALL BE VODALAND CANADA PRO 200P AS MANUFACTURED BY VODALAND OR APPROVED EQUAL.

SPECIFICATION: PRO 200P TRENCH DRAIN SHALL BE 39.4" (1000mm) LONG AND THE NOMINAL CLEAR OPENING SHALL BE 8" (200mm) WITH 10.2" (260mm) OVERALL WIDTH. CHANNELS SHALL BE MANUFACTURED FROM UV STABILIZED 100% RECYCLED POLYPROPYLENE. UNITS SHALL HAVE A MALE-TO-FEMALE INTERLOCKING JOINTS THAT WILL NOT SEPARATE DURING THE INSTALLATION. CHANNELS SHALL HAVE A RADIUS SELF CLEANING BOTTOM WITH A MANNING'S COEFFICIENT OF 0.009 AND NEUTRAL 0% BUILT IN SLOPE. GRATINGS SHALL BE DUCTILE CAST IRON AND MEET THE SYSTEM LOAD CLASS SPECIFIED. CHANNELS SHALL BE EQUIPPED WITH GALVANIZED STEEL EDGE RAILS. CHANNELS AND GRATINGS SHALL WITHSTAND A REQUIRED EN1433 LOAD CLASS.

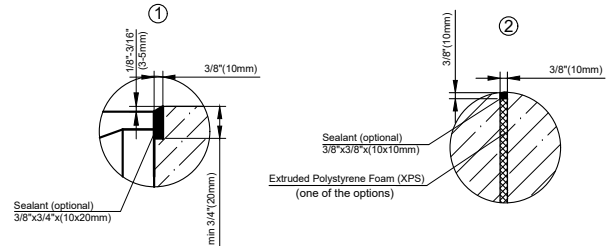
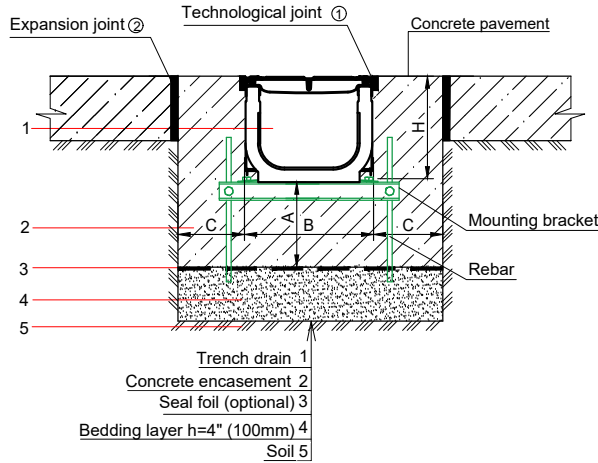
THE COMPLETE DRAINAGE SYSTEM SHALL BE BY VODALAND CANADA INC. ANY DEVIATION OR PARTIAL SYSTEM DESIGN AND/OR IMPROPER INSTALLATION WILL VOID ANY AND ALL WARRANTIES PROVIDED BY VODALAND CANADA INC.

CHECK AND SPECIFY APPROPRIATE OPTIONS:
INLINE CATCH BASIN AND ACCESSORIES:

- 8" END CAP
- 8" MOUNTING BRACKETS
- PRO 200P INLINE CATCH BASIN

PRO 200P SYSTEM - LOAD CLASS D400
EXPOSED CONCRETE PAVEMENT INSTALLATION

8" (200mm) PRO PLASTIC TRENCH DRAIN



| PARAMETER | LOAD CLASS |
|-----------------------------------|------------|
| | CLASS D |
| CONCRETE ENCASEMENT DEPTH (A), in | 8" (200mm) |
| CONCRETE ENCASEMENT WIDTH (C), in | 8" (200mm) |

NOTES:

1. SPECIFIER IS RESPONSIBLE FOR CONCRETE ENCASEMENT AND REINFORCING BASED UPON APPLICATION AND LOCAL CODES.
2. EXPANSION AND CONTRACTION CONTROL JOINTS AND REINFORCEMENT ARE RECOMMENDED TO PROTECT CHANNEL AND CONCRETE SURROUND. ENGINEERING ADVICE MAY BE REQUIRED.
3. THIS INSTALLATION SCHEME IS A RECOMMENDATION. CONSULT WITH THE MANUFACTURER FOR INSTALLATION INSTRUCTIONS.
4. THE FINISHED LEVEL OF CONCRETE SURROUND SHOULD BE 1/8" - 3/16" (3-5mm) ABOVE THE TOP OF THE CHANNEL EDGE.

GENERAL: THE TRENCH DRAIN SHALL BE VODALAND CANADA PRO 200P AS MANUFACTURED BY VODALAND OR APPROVED EQUAL.

SPECIFICATION: PRO 200P TRENCH DRAIN SHALL BE 39.4" (1000mm) LONG AND THE NOMINAL CLEAR OPENING SHALL BE 8" (200mm) WITH 10.2" (260mm) OVERALL WIDTH. CHANNELS SHALL BE MANUFACTURED FROM UV STABILIZED 100% RECYCLED POLYPROPYLENE. UNITS SHALL HAVE A MALE-TO-FEMALE INTERLOCKING JOINTS THAT WILL NOT SEPARATE DURING THE INSTALLATION. CHANNELS SHALL HAVE A RADIUS SELF CLEANING BOTTOM WITH A MANNING'S COEFFICIENT OF 0.009 AND NEUTRAL 0% BUILT IN SLOPE. GRATINGS SHALL BE DUCTILE CAST IRON AND MEET THE SYSTEM LOAD CLASS SPECIFIED. CHANNELS SHALL BE EQUIPPED WITH GALVANIZED STEEL EDGE RAILS. CHANNELS AND GRATINGS SHALL WITHSTAND A REQUIRED EN1433 LOAD CLASS.

THE COMPLETE DRAINAGE SYSTEM SHALL BE BY VODALAND CANADA INC. ANY DEVIATION OR PARTIAL SYSTEM DESIGN AND/OR IMPROPER INSTALLATION WILL VOID ANY AND ALL WARRANTIES PROVIDED BY VODALAND CANADA INC.

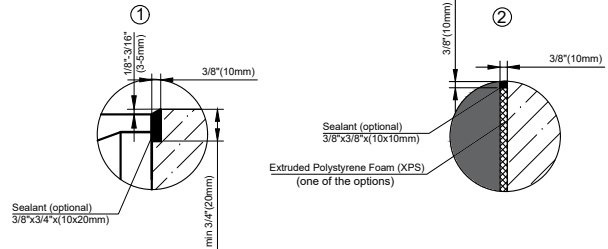
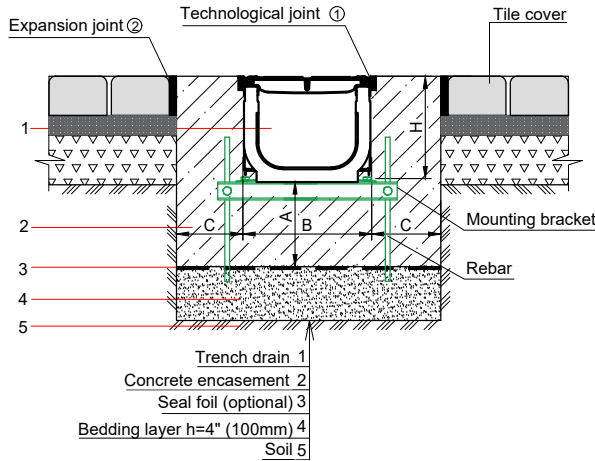
CHECK AND SPECIFY APPROPRIATE OPTIONS:

INLINE CATCH BASIN AND ACCESSORIES:

- 8" END CAP
- 8" MOUNTING BRACKETS
- PRO 200P INLINE CATCH BASIN

PRO 200P SYSTEM - LOAD CLASS D400
EXPOSED PAVER PAVEMENT INSTALLATION

8" (200mm) PRO PLASTIC TRENCH DRAIN



| PARAMETER | LOAD CLASS |
|-----------------------------------|------------|
| | CLASS D |
| CONCRETE ENCASEMENT DEPTH (A), in | 8" (200mm) |
| CONCRETE ENCASEMENT WIDTH (C), in | 8" (200mm) |

NOTES:

- SPECIFIER IS RESPONSIBLE FOR CONCRETE ENCASEMENT AND REINFORCING BASED UPON APPLICATION AND LOCAL CODES.
- EXPANSION AND CONTRACTION CONTROL JOINTS AND REINFORCEMENT ARE RECOMMENDED TO PROTECT CHANNEL AND CONCRETE SURROUND. ENGINEERING ADVICE MAY BE REQUIRED.
- THIS INSTALLATION SCHEME IS A RECOMMENDATION. CONSULT WITH THE MANUFACTURER FOR INSTALLATION INSTRUCTIONS.
- THE FINISHED LEVEL OF CONCRETE SURROUND SHOULD BE 1/8" - 3/16" (3-5mm) ABOVE THE TOP OF THE CHANNEL EDGE.

GENERAL: THE TRENCH DRAIN SHALL BE VODALAND CANADA PRO 200P AS MANUFACTURED BY VODALAND OR APPROVED EQUAL.

SPECIFICATION: PRO 200P TRENCH DRAIN SHALL BE 39.4" (1000mm) LONG AND THE NOMINAL CLEAR OPENING SHALL BE 8" (200mm) WITH 10.2" (260mm) OVERALL WIDTH. CHANNELS SHALL BE MANUFACTURED FROM UV STABILIZED 100% RECYCLED POLYPROPYLENE. UNITS SHALL HAVE A MALE-TO-FEMALE INTERLOCKING JOINTS THAT WILL NOT SEPARATE DURING THE INSTALLATION. CHANNELS SHALL HAVE A RADIUS SELF CLEANING BOTTOM WITH A MANNING'S COEFFICIENT OF 0.009 AND NEUTRAL 0% BUILT IN SLOPE. GRATINGS SHALL BE DUCTILE CAST IRON AND MEET THE SYSTEM LOAD CLASS SPECIFIED. CHANNELS SHALL BE EQUIPPED WITH GALVANIZED STEEL EDGE RAILS. CHANNELS AND GRATINGS SHALL WITHSTAND A REQUIRED EN1433 LOAD CLASS.

THE COMPLETE DRAINAGE SYSTEM SHALL BE BY VODALAND CANADA INC. ANY DEVIATION OR PARTIAL SYSTEM DESIGN AND/OR IMPROPER INSTALLATION WILL VOID ANY AND ALL WARRANTIES PROVIDED BY VODALAND CANADA INC.

CHECK AND SPECIFY APPROPRIATE OPTIONS:

INLINE CATCH BASIN AND ACCESSORIES:

- 8" END CAP
- 8" MOUNTING BRACKETS
- PRO 200P INLINE CATCH BASIN