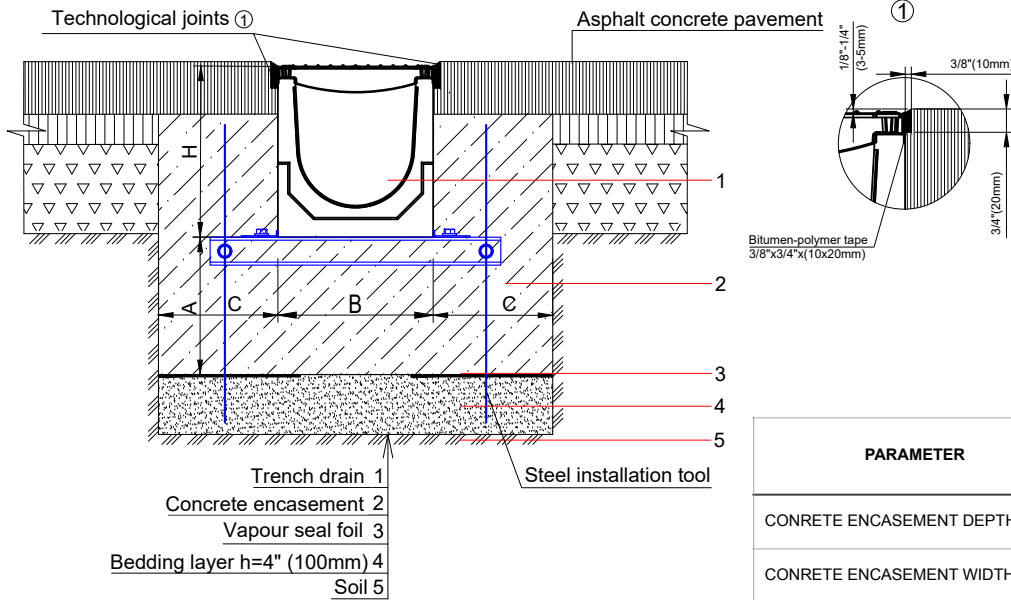


**MEGA 300PC SYSTEM - LOAD CLASS E600**  
ENCLOSED ASPHALT PAVEMENT INSTALLATION

**12" (300mm) MEGA POLYMER CONCRETE TRENCH DRAIN**



PARAMETER	LOAD CLASS
	CLASS E
CONCRETE ENCASUREMENT DEPTH (A), in	10" (250mm)
CONCRETE ENCASUREMENT WIDTH (C), in	8" (200mm)

**NOTES:**

1. SPECIFIER IS RESPONSIBLE FOR CONCRETE ENCASUREMENT AND REINFORCING BASED UPON APPLICATION AND LOCAL CODES.
2. EXPANSION AND CONTRACTION CONTROL JOINTS AND REINFORCEMENT ARE RECOMMENDED TO PROTECT CHANNEL AND CONCRETE SURROUND. ENGINEERING ADVICE MAY BE REQUIRED.
3. THIS INSTALLATION SCHEME IS A RECOMMENDATION. CONSULT WITH THE MANUFACTURER FOR INSTALLATION INSTRUCTIONS.
4. THE FINISHED LEVEL OF CONCRETE SURROUND SHOULD BE 1/8" - 3/16" (3-5mm) ABOVE THE TOP OF THE CHANNEL EDGE.

**GENERAL:** THE TRENCH DRAIN SHALL BE VODALAND CANADA MEGA 300PC AS MANUFACTURED BY VODALAND OR APPROVED EQUAL.

**SPECIFICATION:** CHANNELS SHALL BE 39.4" (1000mm) LONG AND THE NOMINAL CLEAR OPENING SHALL BE 12" (300mm) WITH 15.2" (385mm) OVERALL WIDTH AND NEUTRAL 0% BUILT IN SLOPE. CHANNELS SHALL HAVE MALE-TO-FEMALE INTERLOCKING JOINTS. GRATINGS SHALL BE DUCTILE CAST IRON FASTENED TO STEEL EDGE RAILS AND MEET THE SYSTEM LOAD CLASS SPECIFIED. CHANNELS AND GRATE SHALL WITHSTAND A REQUIRED EN1433 LOAD CLASS.

**MATERIALS:** MEGA 300PC TRENCH DRAIN SHALL BE MANUFACTURED FROM POLYMER CONCRETE WITH THE FOLLOWING APPROXIMATE PROPERTIES:

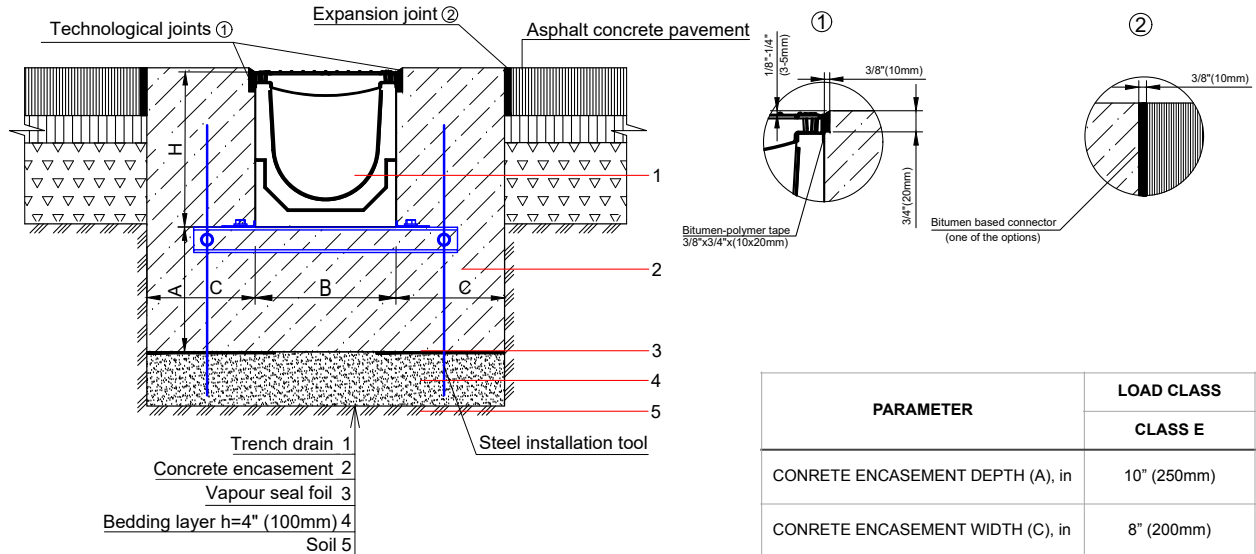
COMPRESSIVE STRENGTH	14,000 PSI
FLEXURAL STRENGTH	4,000 PSI
TENSILE STRENGTH	1,500 PSI
WATER ABSORPTION:	0.05%
FROST PROOF:	YES
DILUTE ACID AND ALKALI RESISTANT:	YES
SALT PROOF:	YES

THE COMPLETE DRAINAGE SYSTEM SHALL BE BY VODALAND CANADA INC. ANY DEVIATION OR PARTIAL SYSTEM DESIGN AND/OR IMPROPER INSTALLATION WILL VOID ANY AND ALL WARRANTIES PROVIDED BY VODALAND CANADA INC.

**REVISED: 2023**

**Vodaland Canada Inc.**

1-5900 Ambler Dr, Mississauga, ON L4W 2N3 • Phone: 905-238-1771 • Email: [info@vodaland.ca](mailto:info@vodaland.ca)

**MEGA 300PC SYSTEM - LOAD CLASS E600**  
**EXPOSED ASPHALT PAVEMENT INSTALLATION**
**12" (300mm) MEGA POLYMER CONCRETE TRENCH DRAIN**

**NOTES:**

- SPECIFIER IS RESPONSIBLE FOR CONCRETE ENCASEMENT AND REINFORCING BASED UPON APPLICATION AND LOCAL CODES.
- EXPANSION AND CONTRACTION CONTROL JOINTS AND REINFORCEMENT ARE RECOMMENDED TO PROTECT CHANNEL AND CONCRETE SURROUND. ENGINEERING ADVICE MAY BE REQUIRED.
- THIS INSTALLATION SCHEME IS A RECOMMENDATION. CONSULT WITH THE MANUFACTURER FOR INSTALLATION INSTRUCTIONS.
- THE FINISHED LEVEL OF CONCRETE SURROUND SHOULD BE 1/8" - 3/16" (3-5mm) ABOVE THE TOP OF THE CHANNEL EDGE.

**GENERAL:** THE TRENCH DRAIN SHALL BE VODALAND CANADA MEGA 300PC AS MANUFACTURED BY VODALAND OR APPROVED EQUAL.

**SPECIFICATION:** CHANNELS SHALL BE 39.4" (1000mm) LONG AND THE NOMINAL CLEAR OPENING SHALL BE 12" (300mm) WITH 15.2" (385mm) OVERALL WIDTH AND NEUTRAL 0% BUILT IN SLOPE. CHANNELS SHALL HAVE MALE-TO-FEMALE INTERLOCKING JOINTS. GRATINGS SHALL BE DUCTILE CAST IRON FASTENED TO STEEL EDGE RAILS AND MEET THE SYSTEM LOAD CLASS SPECIFIED. CHANNELS AND GRATE SHALL WITHSTAND A REQUIRED EN1433 LOAD CLASS.

**MATERIALS:** MEGA 300PC TRENCH DRAIN SHALL BE MANUFACTURED FROM POLYMER CONCRETE WITH THE FOLLOWING APPROXIMATE PROPERTIES:

COMPRESSIVE STRENGTH	14,000 PSI
FLEXURAL STRENGTH	4,000 PSI
TENSILE STRENGTH	1,500 PSI
WATER ABSORPTION:	0.05%
FROST PROOF:	YES
DILUTE ACID AND ALKALI RESISTANT:	YES
SALT PROOF:	YES

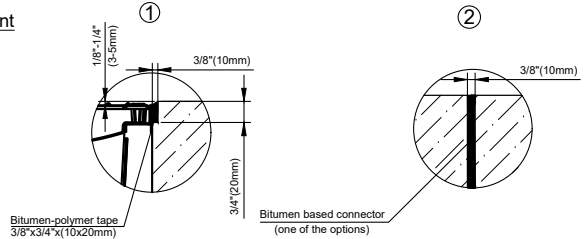
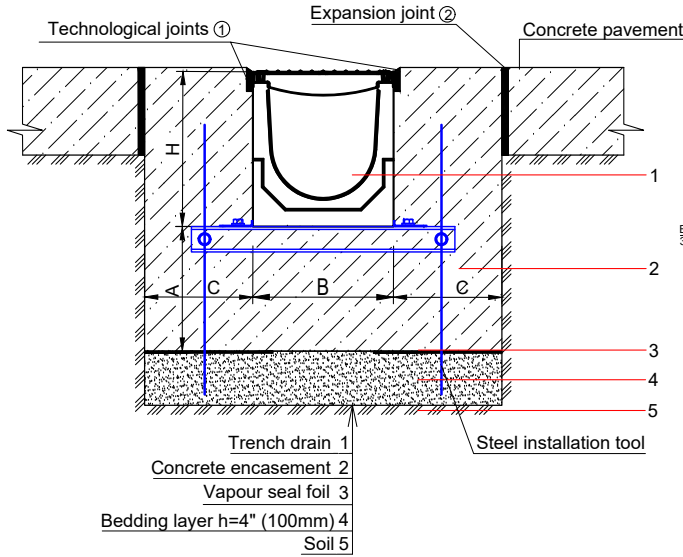
THE COMPLETE DRAINAGE SYSTEM SHALL BE BY VODALAND CANADA INC. ANY DEVIATION OR PARTIAL SYSTEM DESIGN AND/OR IMPROPER INSTALLATION WILL VOID ANY AND ALL WARRANTIES PROVIDED BY VODALAND CANADA INC.

**REVISED: 2023**
**Vodaland Canada Inc.**

 1-5900 Ambler Dr, Mississauga, ON L4W 2N3 • Phone: 905-238-1771 • Email: [info@vodaland.ca](mailto:info@vodaland.ca)

**MEGA 300PC SYSTEM - LOAD CLASS E600**  
**EXPOSED CONCRETE PAVEMENT INSTALLATION**

**12" (300mm) MEGA POLYMER CONCRETE TRENCH DRAIN**



PARAMETER	LOAD CLASS
	CLASS E
CONCRETE ENCASEMENT DEPTH (A), in	10" (250mm)
CONCRETE ENCASEMENT WIDTH (C), in	8" (200mm)

**NOTES:**

1. SPECIFIER IS RESPONSIBLE FOR CONCRETE ENCASEMENT AND REINFORCING BASED UPON APPLICATION AND LOCAL CODES.
2. EXPANSION AND CONTRACTION CONTROL JOINTS AND REINFORCEMENT ARE RECOMMENDED TO PROTECT CHANNEL AND CONCRETE SURROUND. ENGINEERING ADVICE MAY BE REQUIRED.
3. THIS INSTALLATION SCHEME IS A RECOMMENDATION. CONSULT WITH THE MANUFACTURER FOR INSTALLATION INSTRUCTIONS.
4. THE FINISHED LEVEL OF CONCRETE SURROUND SHOULD BE 1/8" - 3/16" (3-5mm) ABOVE THE TOP OF THE CHANNEL EDGE.

**GENERAL:** THE TRENCH DRAIN SHALL BE VODALAND CANADA MEGA 300PC AS MANUFACTURED BY VODALAND OR APPROVED EQUAL.

**SPECIFICATION:** CHANNELS SHALL BE 39.4" (1000mm) LONG AND THE NOMINAL CLEAR OPENING SHALL BE 12" (300mm) WITH 15.2" (385mm) OVERALL WIDTH AND NEUTRAL 0% BUILT IN SLOPE. CHANNELS SHALL HAVE MALE-TO-FEMALE INTERLOCKING JOINTS. GRATINGS SHALL BE DUCTILE CAST IRON FASTENED TO STEEL EDGE RAILS AND MEET THE SYSTEM LOAD CLASS SPECIFIED. CHANNELS AND GRATE SHALL WITHSTAND A REQUIRED EN1433 LOAD CLASS.

**MATERIALS:** MEGA 300PC TRENCH DRAIN SHALL BE MANUFACTURED FROM POLYMER CONCRETE WITH THE FOLLOWING APPROXIMATE PROPERTIES:

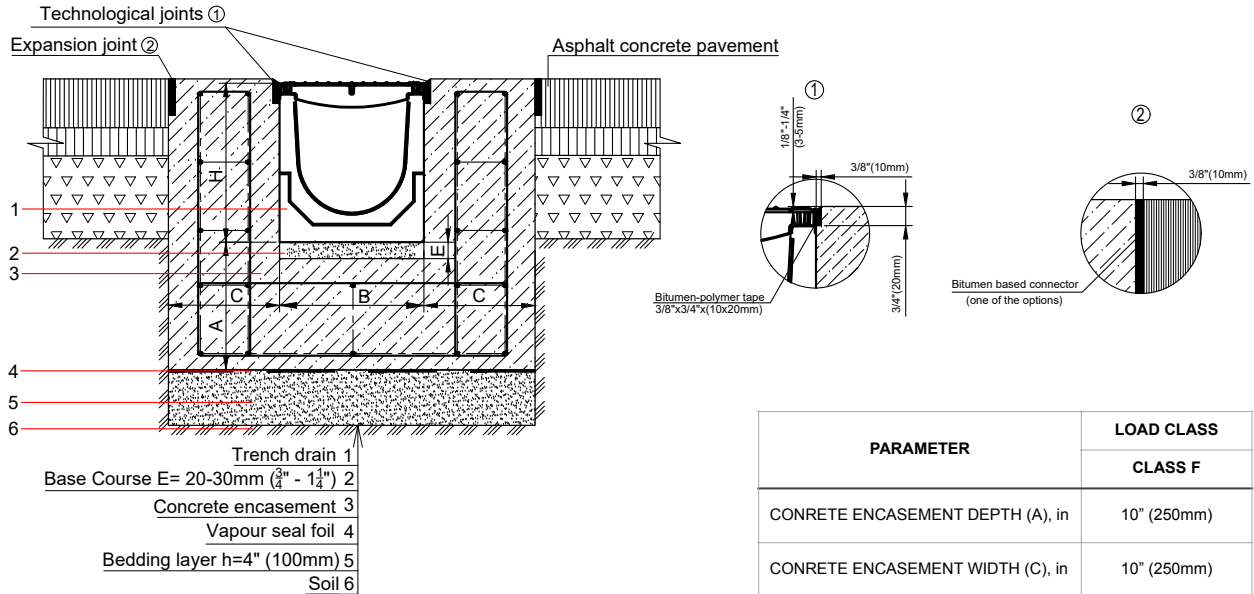
COMPRESSIVE STRENGTH	14,000 PSI
FLEXURAL STRENGTH	4,000 PSI
TENSILE STRENGTH	1,500 PSI
WATER ABSORPTION:	0.05%
FROST PROOF:	YES
DILUTE ACID AND ALKALI RESISTANT:	YES
SALT PROOF:	YES

THE COMPLETE DRAINAGE SYSTEM SHALL BE BY VODALAND CANADA INC. ANY DEVIATION OR PARTIAL SYSTEM DESIGN AND/OR IMPROPER INSTALLATION WILL VOID ANY AND ALL WARRANTIES PROVIDED BY VODALAND CANADA INC.

**REVISED: 2023**

**Vodaland Canada Inc.**

1-5900 Ambler Dr, Mississauga, ON L4W 2N3 • Phone: 905-238-1771 • Email: [info@vodaland.ca](mailto:info@vodaland.ca)

**MEGA 300PC SYSTEM - LOAD CLASS F900**  
**EXPOSED ASPHALT PAVEMENT INSTALLATION**
**12" (300mm) MEGA POLYMER CONCRETE TRENCH DRAIN**

**NOTES:**

1. SPECIFIER IS RESPONSIBLE FOR CONCRETE ENCASEMENT AND REINFORCING BASED UPON APPLICATION AND LOCAL CODES.
2. EXPANSION AND CONTRACTION CONTROL JOINTS AND REINFORCEMENT ARE RECOMMENDED TO PROTECT CHANNEL AND CONCRETE SURROUND. ENGINEERING ADVICE MAY BE REQUIRED.
3. THIS INSTALLATION SCHEME IS A RECOMMENDATION. CONSULT WITH THE MANUFACTURER FOR INSTALLATION INSTRUCTIONS.
4. THE FINISHED LEVEL OF CONCRETE SURROUND SHOULD BE 1/8" - 3/16" (3-5mm) ABOVE THE TOP OF THE CHANNEL EDGE.

**GENERAL:** THE TRENCH DRAIN SHALL BE VODALAND CANADA MEGA 300PC AS MANUFACTURED BY VODALAND OR APPROVED EQUAL.

**SPECIFICATION:** CHANNELS SHALL BE 39.4" (1000mm) LONG AND THE NOMINAL CLEAR OPENING SHALL BE 12" (300mm) WITH 15.2" (385mm) OVERALL WIDTH AND NEUTRAL 0% BUILT IN SLOPE. CHANNELS SHALL HAVE MALE-TO-FEMALE INTERLOCKING JOINTS. GRATINGS SHALL BE DUCTILE CAST IRON FASTENED TO STEEL EDGE RAILS AND MEET THE SYSTEM LOAD CLASS SPECIFIED. CHANNELS AND GRATE SHALL WITHSTAND A REQUIRED EN1433 LOAD CLASS.

**MATERIALS:** MEGA 300PC TRENCH DRAIN SHALL BE MANUFACTURED FROM POLYMER CONCRETE WITH THE FOLLOWING APPROXIMATE PROPERTIES:

COMPRESSIVE STRENGTH	14,000 PSI
FLEXURAL STRENGTH	4,000 PSI
TENSILE STRENGTH	1,500 PSI
WATER ABSORPTION:	0.05%
FROST PROOF:	YES
DILUTE ACID AND ALKALI RESISTANT:	YES
SALT PROOF:	YES

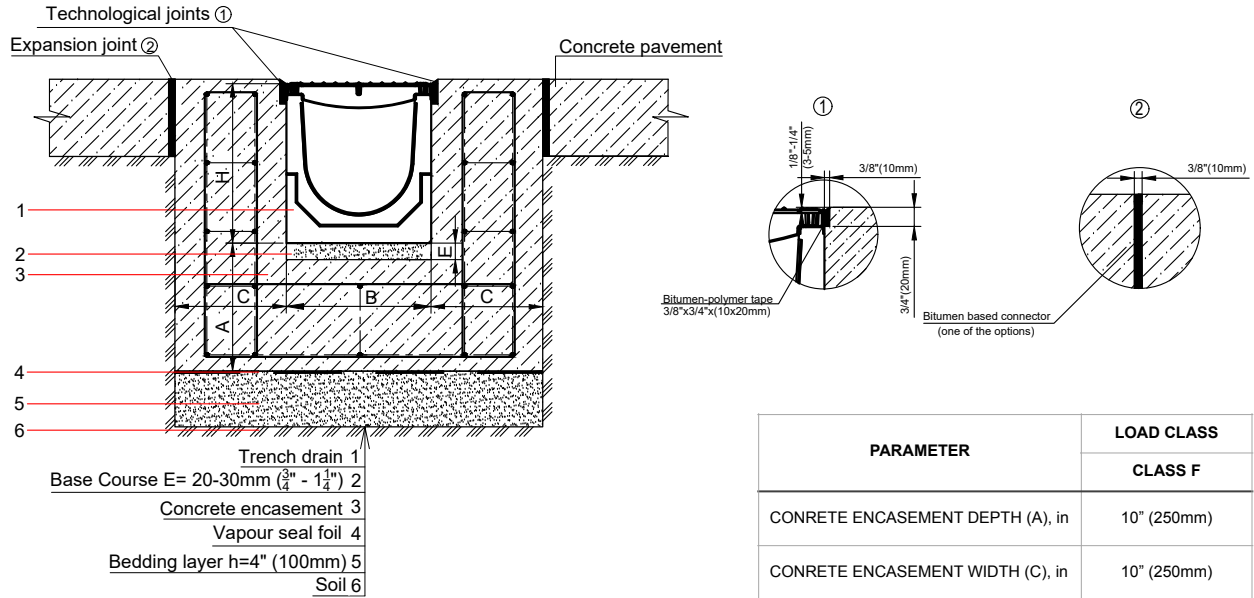
THE COMPLETE DRAINAGE SYSTEM SHALL BE BY VODALAND CANADA INC. ANY DEVIATION OR PARTIAL SYSTEM DESIGN AND/OR IMPROPER INSTALLATION WILL VOID ANY AND ALL WARRANTIES PROVIDED BY VODALAND CANADA INC.

**REVISED: 2023**
**Vodaland Canada Inc.**

 1-5900 Ambler Dr, Mississauga, ON L4W 2N3 • Phone: 905-238-1771 • Email: [info@vodaland.ca](mailto:info@vodaland.ca)

**MEGA 300PC SYSTEM - LOAD CLASS F900**  
**EXPOSED CONCRETE PAVEMENT INSTALLATION**

**12" (300mm) MEGA POLYMER CONCRETE TRENCH DRAIN**



**NOTES:**

1. SPECIFIER IS RESPONSIBLE FOR CONCRETE ENCASUREMENT AND REINFORCING BASED UPON APPLICATION AND LOCAL CODES.
2. EXPANSION AND CONTRACTION CONTROL JOINTS AND REINFORCEMENT ARE RECOMMENDED TO PROTECT CHANNEL AND CONCRETE SURROUND. ENGINEERING ADVICE MAY BE REQUIRED.
3. THIS INSTALLATION SCHEME IS A RECOMMENDATION. CONSULT WITH THE MANUFACTURER FOR INSTALLATION INSTRUCTIONS.
4. THE FINISHED LEVEL OF CONCRETE SURROUND SHOULD BE 1/8" - 3/16" (3-5mm) ABOVE THE TOP OF THE CHANNEL EDGE.

**GENERAL:** THE TRENCH DRAIN SHALL BE VODALAND CANADA MEGA 300PC AS MANUFACTURED BY VODALAND OR APPROVED EQUAL.

**SPECIFICATION:** CHANNELS SHALL BE 39.4" (1000mm) LONG AND THE NOMINAL CLEAR OPENING SHALL BE 12" (300mm) WITH 15.2" (385mm) OVERALL WIDTH AND NEUTRAL 0% BUILT IN SLOPE. CHANNELS SHALL HAVE MALE-TO-FEMALE INTERLOCKING JOINTS. GRATINGS SHALL BE DUCTILE CAST IRON FASTENED TO STEEL EDGE RAILS AND MEET THE SYSTEM LOAD CLASS SPECIFIED. CHANNELS AND GRATE SHALL WITHSTAND A REQUIRED EN1433 LOAD CLASS.

**MATERIALS:** MEGA 300PC TRENCH DRAIN SHALL BE MANUFACTURED FROM POLYMER CONCRETE WITH THE FOLLOWING APPROXIMATE PROPERTIES:

COMPRESSIVE STRENGTH	14,000 PSI
FLEXURAL STRENGTH	4,000 PSI
TENSILE STRENGTH	1,500 PSI
WATER ABSORPTION:	0.05%
FROST PROOF:	YES
DILUTE ACID AND ALKALI RESISTANT:	YES
SALT PROOF:	YES

THE COMPLETE DRAINAGE SYSTEM SHALL BE BY VODALAND CANADA INC. ANY DEVIATION OR PARTIAL SYSTEM DESIGN AND/OR IMPROPER INSTALLATION WILL VOID ANY AND ALL WARRANTIES PROVIDED BY VODALAND CANADA INC.

**REVISED: 2023**

**Vodaland Canada Inc.**

1-5900 Ambler Dr, Mississauga, ON L4W 2N3 • Phone: 905-238-1771 • Email: [info@vodaland.ca](mailto:info@vodaland.ca)