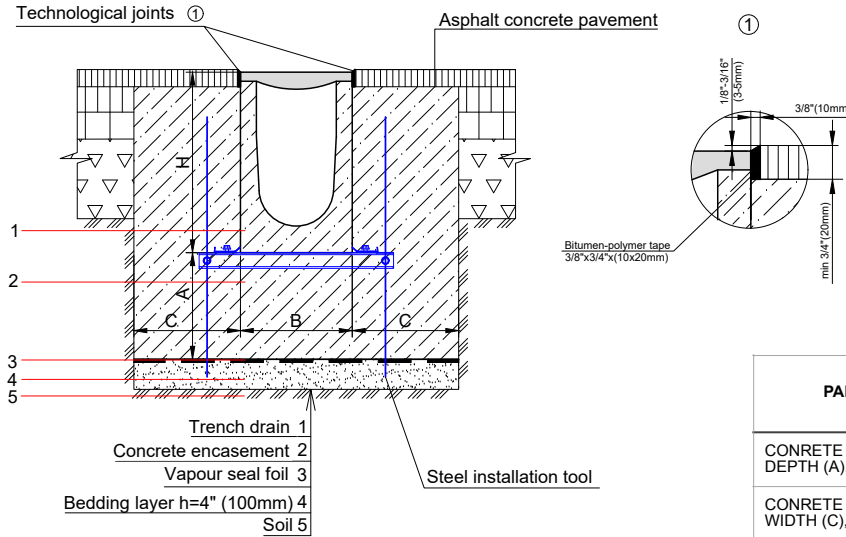


PRO 300FC SYSTEM - LOAD CLASS D400-E600
ENCLOSED ASPHALT PAVEMENT INSTALLATION

12" (300mm) PRO FIBER REINFORCED CONCRETE TRENCH DRAIN



| PARAMETER | LOAD CLASS | |
|-----------------------------------|------------|-------------|
| | CLASS D | CLASS E |
| CONCRETE ENCASEMENT DEPTH (A), in | 8" (200mm) | 10" (250mm) |
| CONCRETE ENCASEMENT WIDTH (C), in | 8" (200mm) | 8" (200mm) |

NOTES:

- SPECIFIER IS RESPONSIBLE FOR CONCRETE ENCASEMENT AND REINFORCING BASED UPON APPLICATION AND LOCAL CODES.
- EXPANSION AND CONTRACTION CONTROL JOINTS AND REINFORCEMENT ARE RECOMMENDED TO PROTECT CHANNEL AND CONCRETE SURROUND. ENGINEERING ADVICE MAY BE REQUIRED.
- THIS INSTALLATION SCHEME IS A RECOMMENDATION. CONSULT WITH THE MANUFACTURER FOR INSTALLATION INSTRUCTIONS.
- THE FINISHED LEVEL OF CONCRETE SURROUND SHOULD BE 1/8" - 3/16" (3-5mm) ABOVE THE TOP OF THE CHANNEL EDGE.

GENERAL: THE TRENCH DRAIN SHALL BE VODALAND CANADA PRO 300FC AS MANUFACTURED BY VODALAND OR APPROVED EQUAL.

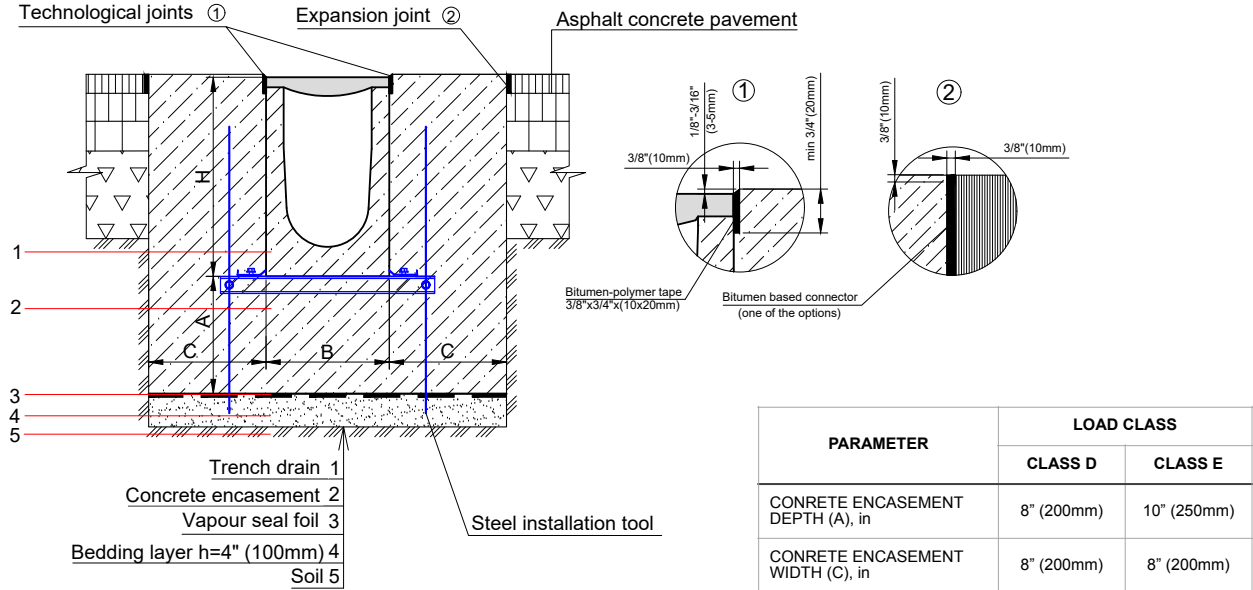
SPECIFICATION: CHANNELS SHALL BE 39.4" (1000mm) LONG AND THE NOMINAL CLEAR OPENING SHALL BE 12" (300mm) WITH 14.2" (360mm) OVERALL WIDTH AND BUILT-IN SLOPE OF 0.5% OR 1% PER SPECIFIER'S REQUIREMENTS. CHANNELS SHALL HAVE MALE-TO-FEMALE INTERLOCKING JOINTS. GRATINGS SHALL BE DUCTILE CAST IRON FASTENED TO STEEL EDGE RAILS AND MEET THE SYSTEM LOAD CLASS SPECIFIED. CHANNELS AND GRATE SHALL WITHSTAND A REQUIRED EN1433 LOAD CLASS.

MATERIALS: PRO 300FC TRENCH DRAIN SHALL BE MANUFACTURED FROM FIBER CONCRETE WITH THE FOLLOWING PROPERTIES:

| | |
|--|----------|
| COMPRESSIVE STRENGTH | > 45 MPA |
| FLEXURAL STRENGTH | > 20 MPA |
| FROST RESISTANT | YES |
| NON FLAMMABLE | YES |
| UV RESISTANT | YES |
| RECYCLABLE 100% | YES |
| DILUTE ACID AND ALKALI RESISTANT: | YES |
| MATERIAL FREE OF VOC, BIOCIDES, HEAVY METALS | YES |
| WATER ABSORPTION IS SUFFICIENT FOR ADHESION WITH CONCRETE SURFACES | YES |

THE COMPLETE DRAINAGE SYSTEM SHALL BE BY VODALAND CANADA INC. ANY DEVIATION OR PARTIAL SYSTEM DESIGN AND/OR IMPROPER INSTALLATION WILL VOID ANY AND ALL WARRANTIES PROVIDED BY VODALAND CANADA INC.

PRO 300FC SYSTEM - LOAD CLASS D400-E600
 EXPOSED ASPHALT PAVEMENT INSTALLATION

12" (300mm) PRO FIBER REINFORCED CONCRETE TRENCH DRAIN

NOTES:

- SPECIFIER IS RESPONSIBLE FOR CONCRETE ENCASEMENT AND REINFORCING BASED UPON APPLICATION AND LOCAL CODES.
- EXPANSION AND CONTRACTION CONTROL JOINTS AND REINFORCEMENT ARE RECOMMENDED TO PROTECT CHANNEL AND CONCRETE SURROUND. ENGINEERING ADVICE MAY BE REQUIRED.
- THIS INSTALLATION SCHEME IS A RECOMMENDATION. CONSULT WITH THE MANUFACTURER FOR INSTALLATION INSTRUCTIONS.
- THE FINISHED LEVEL OF CONCRETE SURROUND SHOULD BE 1/8" - 3/16" (3-5mm) ABOVE THE TOP OF THE CHANNEL EDGE.

GENERAL: THE TRENCH DRAIN SHALL BE VODALAND CANADA PRO 300FC AS MANUFACTURED BY VODALAND OR APPROVED EQUAL.

SPECIFICATION: CHANNELS SHALL BE 39.4" (1000mm) LONG AND THE NOMINAL CLEAR OPENING SHALL BE 12" (300mm) WITH 14.2" (360mm) OVERALL WIDTH AND BUILT-IN SLOPE OF 0.5% OR 1% PER SPECIFIER'S REQUIREMENTS. CHANNELS SHALL HAVE MALE-TO-FEMALE INTERLOCKING JOINTS. GRATINGS SHALL BE DUCTILE CAST IRON FASTENED TO STEEL EDGE RAILS AND MEET THE SYSTEM LOAD CLASS SPECIFIED. CHANNELS AND GRATE SHALL WITHSTAND A REQUIRED EN1433 LOAD CLASS.

MATERIALS: PRO 300FC TRENCH DRAIN SHALL BE MANUFACTURED FROM FIBER CONCRETE WITH THE FOLLOWING PROPERTIES:

| | |
|--|----------|
| COMPRESSIVE STRENGTH | > 45 MPA |
| FLEXURAL STRENGTH | > 20 MPA |
| FROST RESISTANT | YES |
| NON FLAMMABLE | YES |
| UV RESISTANT | YES |
| RECYCLABLE 100% | YES |
| DILUTE ACID AND ALKALI RESISTANT: | YES |
| MATERIAL FREE OF VOC, BIOCIDES, HEAVY METALS | YES |
| WATER ABSORPTION IS SUFFICIENT FOR ADHESION WITH CONCRETE SURFACES | YES |

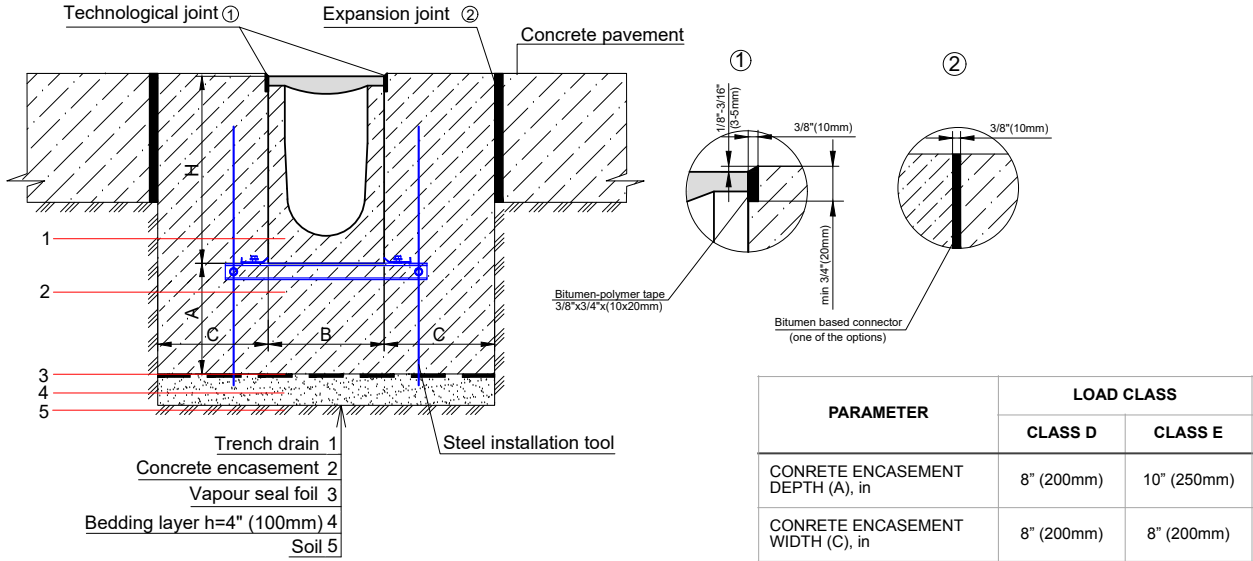
THE COMPLETE DRAINAGE SYSTEM SHALL BE BY VODALAND CANADA INC. ANY DEVIATION OR PARTIAL SYSTEM DESIGN AND/OR IMPROPER INSTALLATION WILL VOID ANY AND ALL WARRANTIES PROVIDED BY VODALAND CANADA INC.

REVISED: 2023
Vodaland Canada Inc.

 1-5900 Ambler Dr, Mississauga, ON L4W 2N3 • Phone: 905-238-1771 • Email: info@vodaland.ca

PRO 300FC SYSTEM - LOAD CLASS D400-E600
EXPOSED CONCRETE PAVEMENT INSTALLATION

12" (300mm) PRO FIBER REINFORCED CONCRETE TRENCH DRAIN



NOTES:

- SPECIFIER IS RESPONSIBLE FOR CONCRETE ENCASEMENT AND REINFORCING BASED UPON APPLICATION AND LOCAL CODES.
- EXPANSION AND CONTRACTION CONTROL JOINTS AND REINFORCEMENT ARE RECOMMENDED TO PROTECT CHANNEL AND CONCRETE SURROUND. ENGINEERING ADVICE MAY BE REQUIRED.
- THIS INSTALLATION SCHEME IS A RECOMMENDATION. CONSULT WITH THE MANUFACTURER FOR INSTALLATION INSTRUCTIONS.
- THE FINISHED LEVEL OF CONCRETE SURROUND SHOULD BE 1/8" - 3/16" (3-5mm) ABOVE THE TOP OF THE CHANNEL EDGE.

GENERAL: THE TRENCH DRAIN SHALL BE VODALAND CANADA PRO 300FC AS MANUFACTURED BY VODALAND OR APPROVED EQUAL.

SPECIFICATION: CHANNELS SHALL BE 39.4" (1000mm) LONG AND THE NOMINAL CLEAR OPENING SHALL BE 12" (300mm) WITH 14.2" (360mm) OVERALL WIDTH AND BUILT-IN SLOPE OF 0.5% OR 1% PER SPECIFIER'S REQUIREMENTS. CHANNELS SHALL HAVE MALE-TO-FEMALE INTERLOCKING JOINTS. GRATINGS SHALL BE DUCTILE CAST IRON FASTENED TO STEEL EDGE RAILS AND MEET THE SYSTEM LOAD CLASS SPECIFIED. CHANNELS AND GRATE SHALL WITHSTAND A REQUIRED EN1433 LOAD CLASS.

MATERIALS: PRO 300FC TRENCH DRAIN SHALL BE MANUFACTURED FROM FIBER CONCRETE WITH THE FOLLOWING PROPERTIES:

| | |
|--|----------|
| COMPRESSIVE STRENGTH | > 45 MPA |
| FLEXURAL STRENGTH | > 20 MPA |
| FROST RESISTANT | YES |
| NON FLAMMABLE | YES |
| UV RESISTANT | YES |
| RECYCLABLE 100% | YES |
| DILUTE ACID AND ALKALI RESISTANT: | YES |
| MATERIAL FREE OF VOC, BIOCIDES, HEAVY METALS | YES |
| WATER ABSORPTION IS SUFFICIENT FOR ADHESION WITH CONCRETE SURFACES | YES |

THE COMPLETE DRAINAGE SYSTEM SHALL BE BY VODALAND CANADA INC. ANY DEVIATION OR PARTIAL SYSTEM DESIGN AND/OR IMPROPER INSTALLATION WILL VOID ANY AND ALL WARRANTIES PROVIDED BY VODALAND CANADA INC.