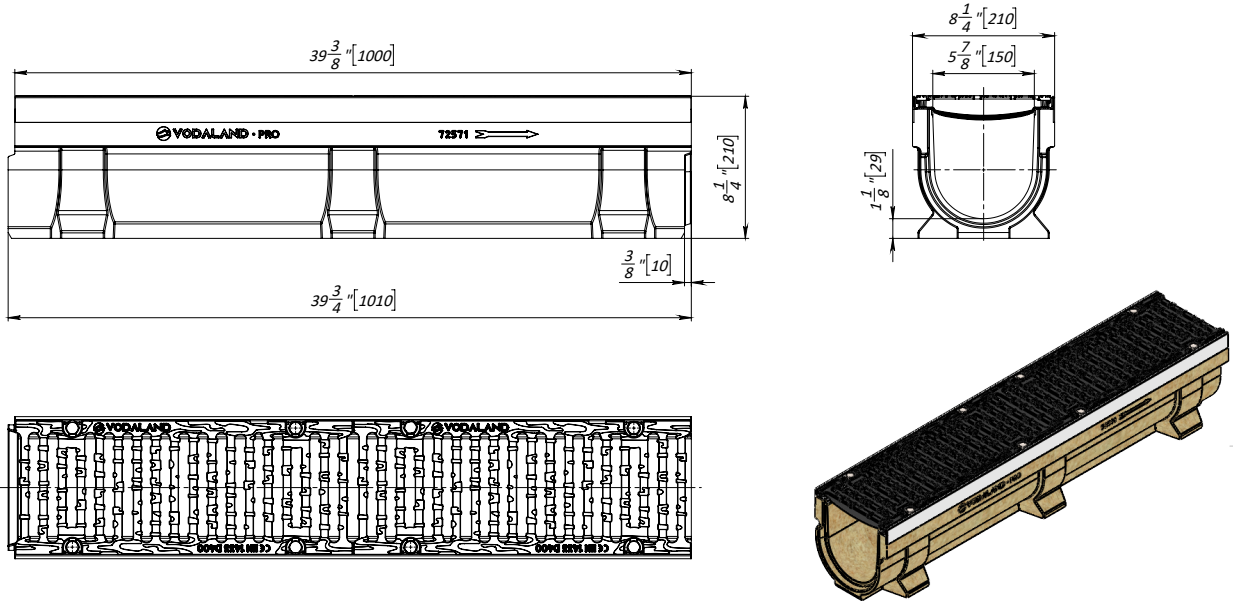


PRO 150PC SYSTEM - LOAD CLASS D400-E600

6" (150mm) PRO POLYMER CONCRETE TRENCH DRAIN



General: The trench drain shall be Vodaland Canada PRO 150PC as manufactured by Vodaland or approved equal.

Specification: Channels shall be 39.4" (1000mm) long and the nominal clear opening shall be 6" (150mm) with 8.2" (210mm) overall width and built in neutral slope as per specifier's requirements. Channels shall have male-to-female interlocking joints. Gratings shall be ductile cast iron fastened to steel edge rails and meet the system load class specified. Channels and grate shall withstand a required EN1433 load class.

Materials: PRO 150PC trench drain shall be manufactured from polymer concrete with the following approximate properties:

| | |
|----------------------------------|------------|
| Compressive strength | 14,000 Psi |
| Flexural strength | 4,000 Psi |
| Tensile strength | 1,500 Psi |
| Water absorption | 0.05% |
| Frost proof | Yes |
| Dilute acid and alkali resistant | Yes |
| Salt proof | Yes |

Neutral Slope:

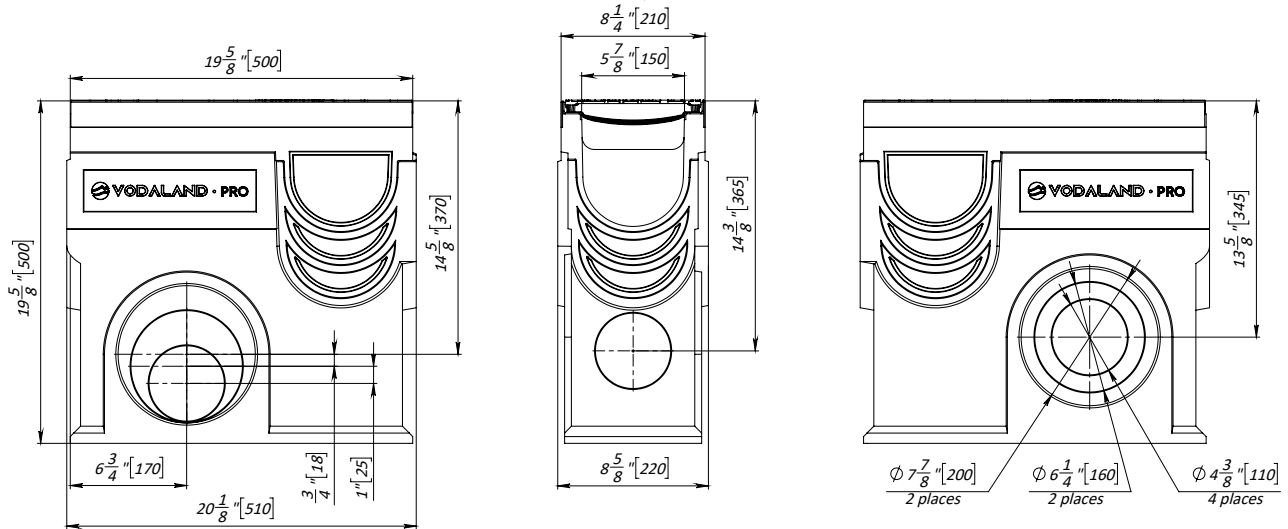
| Name | Load Class | Article | H, in | H, mm | W, lb |
|---|------------|------------|-------|-------|-------|
| 6" PRO polymer concrete trench drain H3.9" | D400 | 0727171334 | 3.9 | 100 | 61 |
| 6" PRO polymer concrete trench drain H8.3" | D400 | 072571334 | 8.3 | 210 | 76 |
| 6" PRO polymer concrete trench drain H10.2" | D400 | 072071334 | 10.2 | 260 | 85 |
| 6" PRO polymer concrete trench drain H12.2" | D400 | 072671334 | 12.2 | 310 | 94 |
| 6" PRO polymer concrete trench drain H3.9" | E600 | 07217155 | 3.9 | 100 | 66 |
| 6" PRO polymer concrete trench drain H8.3" | E600 | 07257155 | 8.3 | 210 | 81 |
| 6" PRO polymer concrete trench drain H10.2" | E600 | 07267155 | 10.2 | 260 | 93 |
| 6" PRO polymer concrete trench drain H12.2" | E600 | 0287155 | 12.2 | 310 | 102 |

Accessories:

| Name | Article | H, in | H, mm |
|---------------------------------------|------------|-------|-------|
| 6" PRO polymer concrete endcap H3.9" | 6721-D/100 | 3.9 | 100 |
| 6" PRO polymer concrete endcap H8.3" | 6721-D/210 | 8.3 | 210 |
| 6" PRO polymer concrete endcap H10.2" | 6721-D/260 | 10.2 | 260 |
| 6" PRO polymer concrete endcap H12.2" | 6721-D/310 | 12.2 | 310 |

Flow rates:

| Name | Load Class | Article | 70% Fill L/s | 100% Fill L/s |
|---|------------|------------|--------------|---------------|
| 6" PRO polymer concrete trench drain H3.9" | D400 | 0727171334 | 3.27 | 5.45 |
| 6" PRO polymer concrete trench drain H8.3" | D400 | 072571334 | 13.78 | 22.36 |
| 6" PRO polymer concrete trench drain H10.2" | D400 | 072071334 | 19.82 | 31.19 |
| 6" PRO polymer concrete trench drain H12.2" | D400 | 072671334 | 25.92 | 40.07 |
| 6" PRO polymer concrete trench drain H3.9" | E600 | 07217155 | 3.27 | 5.45 |
| 6" PRO polymer concrete trench drain H8.3" | E600 | 07257155 | 13.78 | 22.36 |
| 6" PRO polymer concrete trench drain H10.2" | E600 | 07267155 | 19.82 | 31.19 |
| 6" PRO polymer concrete trench drain H12.2" | E600 | 0287155 | 25.92 | 40.07 |

6" (150mm) PRO POLYMER CONCRETE SAND TRAP - LOAD CLASS D400 - E600


General: The inline catch basin shall be Vodaland Canada PRO 150PC as manufactured by Vodaland or approved equal.

Specification: Catch basin shall be 19.7" (500mm) long and the nominal clear opening shall be 6" (150mm) with 8.2" (210mm) overall width. Gratings shall be ductile cast iron fastened to steel edge rails and meet the system load class specified. Catch basin and grate shall withstand a required EN1433 load class.

Materials: PRO 150PC inline catch basin shall be manufactured from polymer concrete with the following approximate properties:

| | |
|----------------------------------|------------|
| Compressive strength | 14,000 psi |
| Flexural strength | 4,000 psi |
| Tensile strength | 1,500 Psi |
| Water absorption | 0.05% |
| Frost proof | Yes |
| Dilute acid and alkali resistant | Yes |
| Salt proof | Yes |

| Name | Load Class | Article | H, in | H, mm | W, lb |
|--|------------|-----------|-------|-------|-------|
| 6" PRO polymer concrete inline catch basin | D400 | 072871334 | 19.7 | 500 | 72 |
| 6" PRO polymer concrete inline catch basin | E600 | 07287155 | 19.7 | 500 | 76 |