
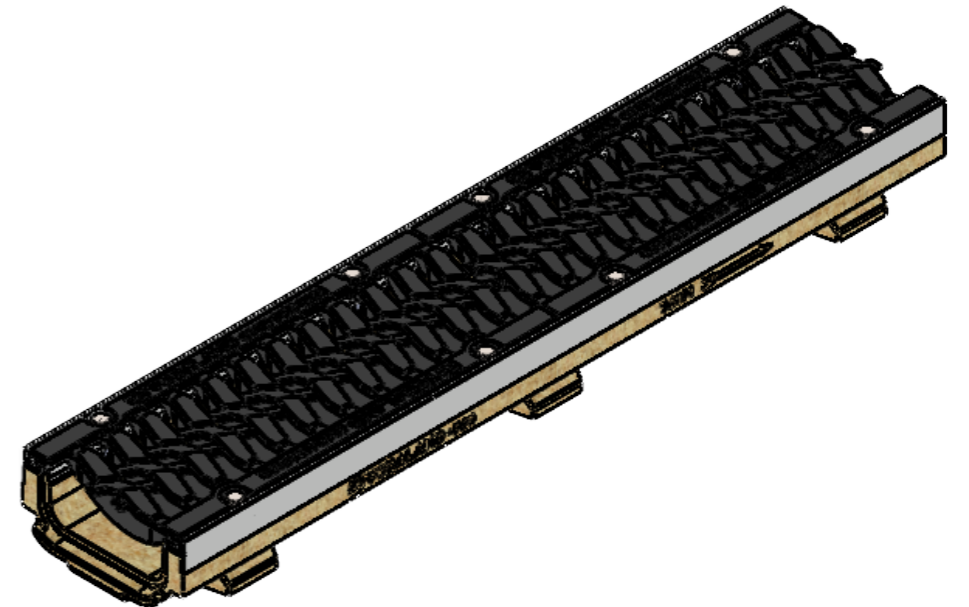
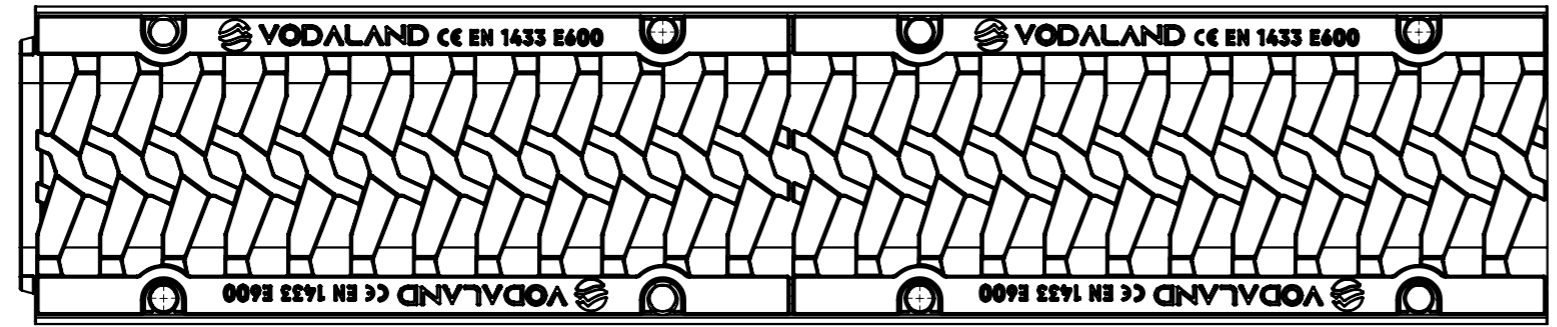
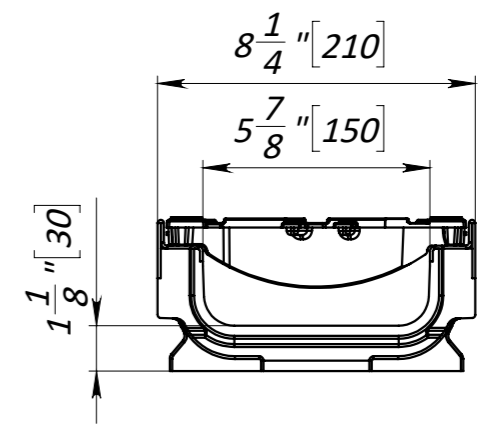
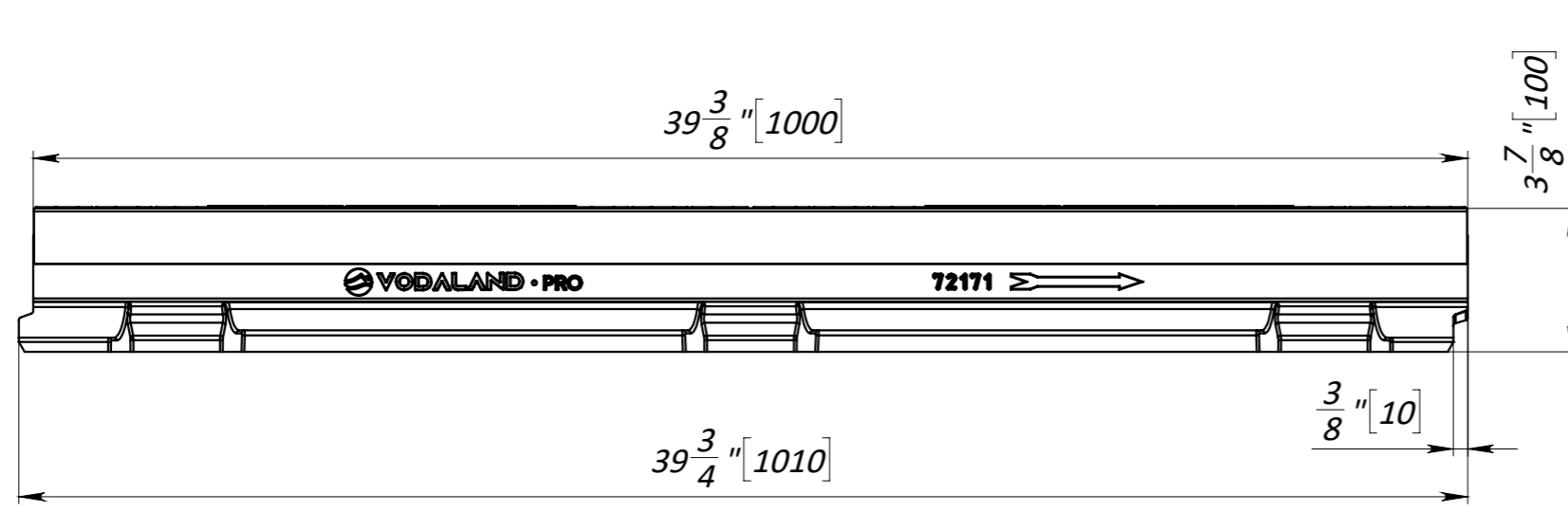


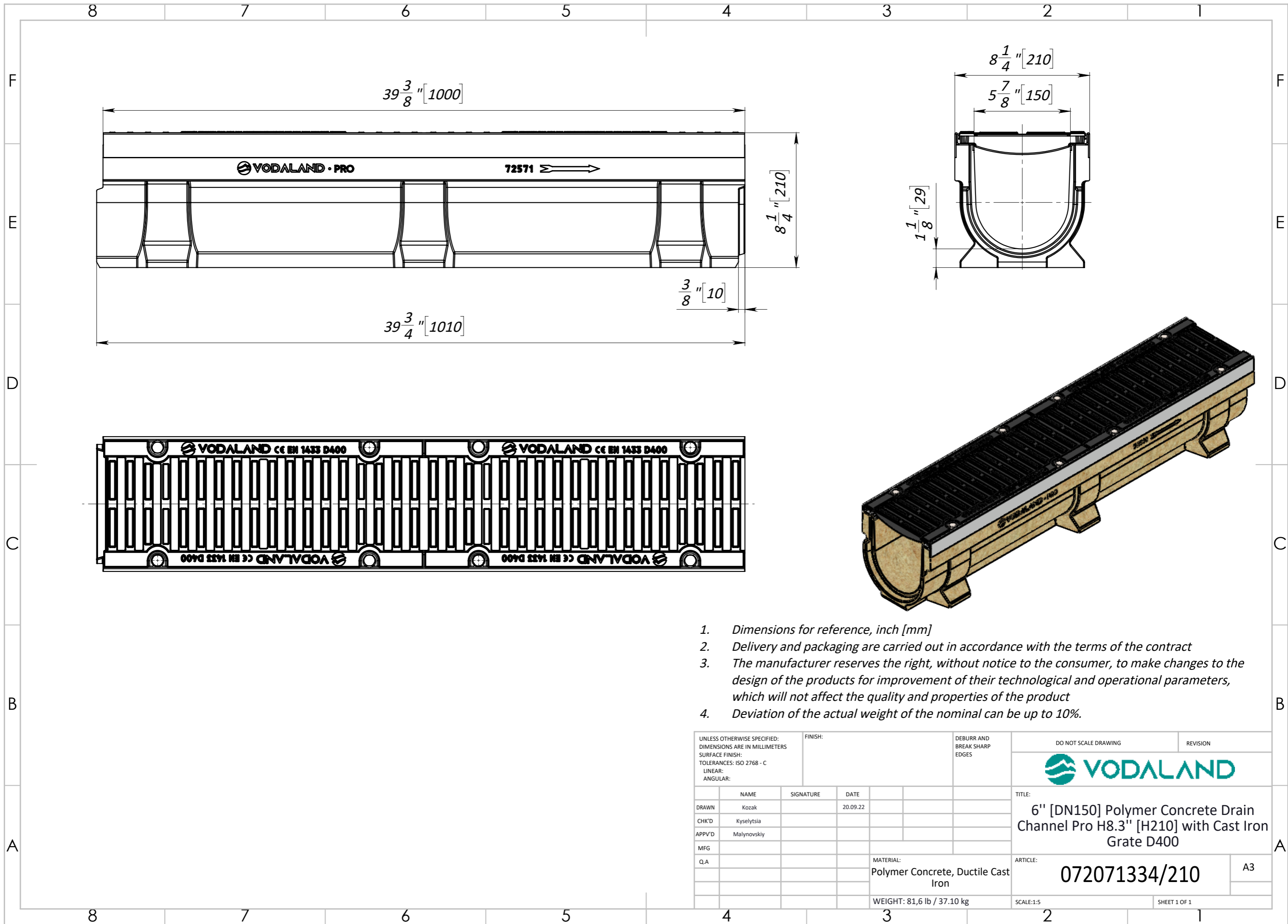
1. Dimensions for reference, inch [mm]
2. Delivery and packaging are carried out in accordance with the terms of the contract
3. The manufacturer reserves the right, without notice to the consumer, to make changes to the design of the products for improvement of their technological and operational parameters, which will not affect the quality and properties of the product
4. Deviation of the actual weight of the nominal can be up to 10%.

UNLESS OTHERWISE SPECIFIED: DIMENSIONS ARE IN MILLIMETERS SURFACE FINISH: TOLERANCES: ISO 2768 - C LINEAR: ANGULAR:			FINISH:		DEBURR AND BREAK SHARP EDGES		DO NOT SCALE DRAWING		REVISION	
										
									TITLE: 6" [DN150] Polymer Concrete Drain Channel Pro H3.9" [H100] with Cast Iron Grate D400	
							ARTICLE: 072071334/100		A3	
					MATERIAL: Polymer Concrete, Ductile Cast Iron		SCALE: 1:5		SHEET 1 OF 1	
					WEIGHT: 64,6 lb / 29.38 kg					
DRAWN			NAME		SIGNATURE		DATE			
CHK'D			Kozak				20.09.22			
APPV'D			Kyselytsia							
MFG			Malynovskiy							
Q.A										




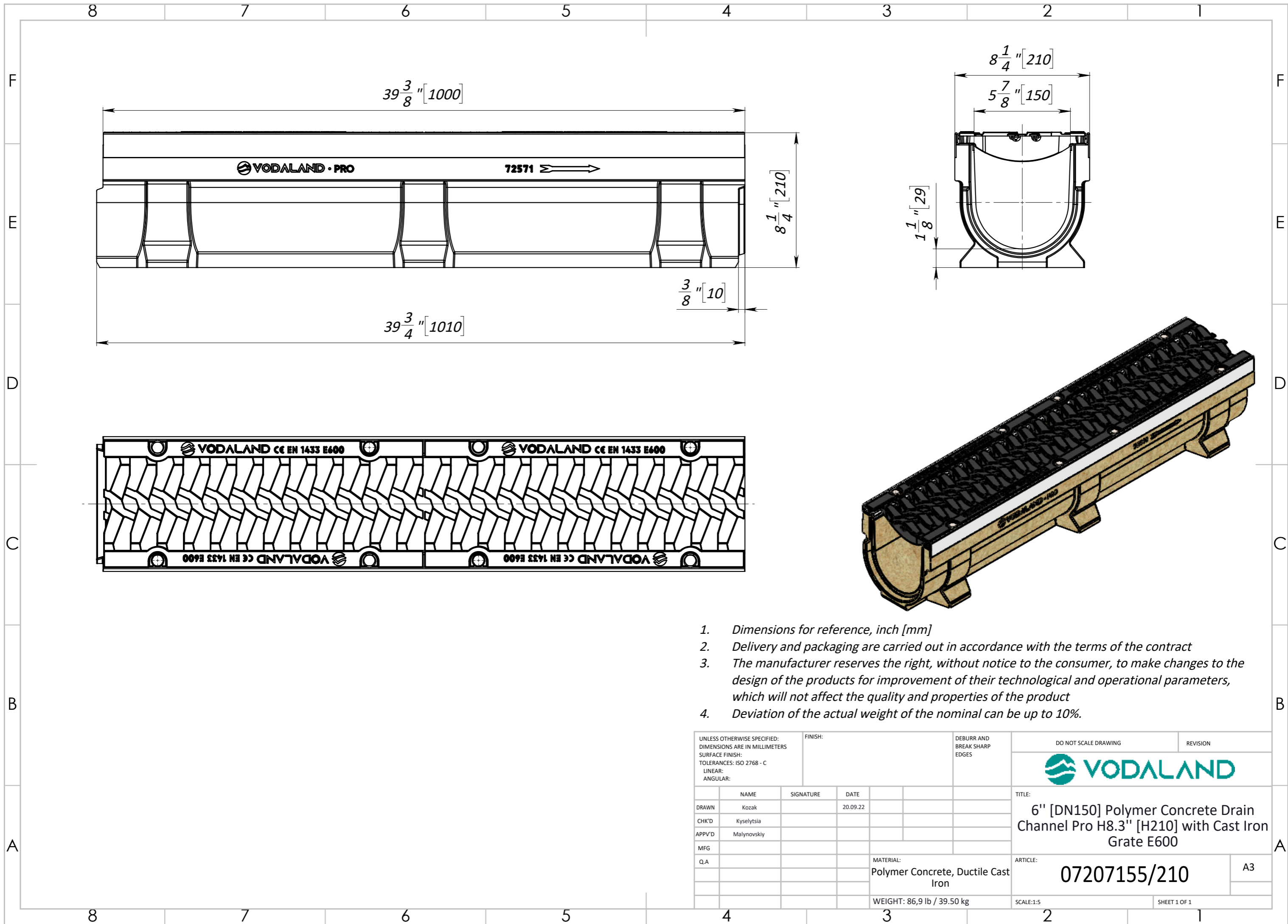
1. Dimensions for reference, inch [mm]
2. Delivery and packaging are carried out in accordance with the terms of the contract
3. The manufacturer reserves the right, without notice to the consumer, to make changes to the design of the products for improvement of their technological and operational parameters, which will not affect the quality and properties of the product
4. Deviation of the actual weight of the nominal can be up to 10%.

UNLESS OTHERWISE SPECIFIED: DIMENSIONS ARE IN MILLIMETERS SURFACE FINISH: TOLERANCES: ISO 2768 - C LINEAR: ANGULAR:		FINISH:		DEBURR AND BREAK SHARP EDGES		DO NOT SCALE DRAWING		REVISION	
DRAWN		NAME		SIGNATURE		DATE		TITLE:	
CHK'D		Kozak				20.09.22		6" [DN150] Polymer Concrete Drain Channel Pro H3.9" [H100] with Cast Iron Grate E600	
APPV'D		Kyselytsia						ARTICLE:	
MFG		Malynovskiy						07207155/100	
Q.A						MATERIAL: Polymer Concrete, Ductile Cast Iron		A3	
						WEIGHT: 69,9 lb / 31.78 kg		SCALE: 1:5	
								SHEET 1 OF 1	




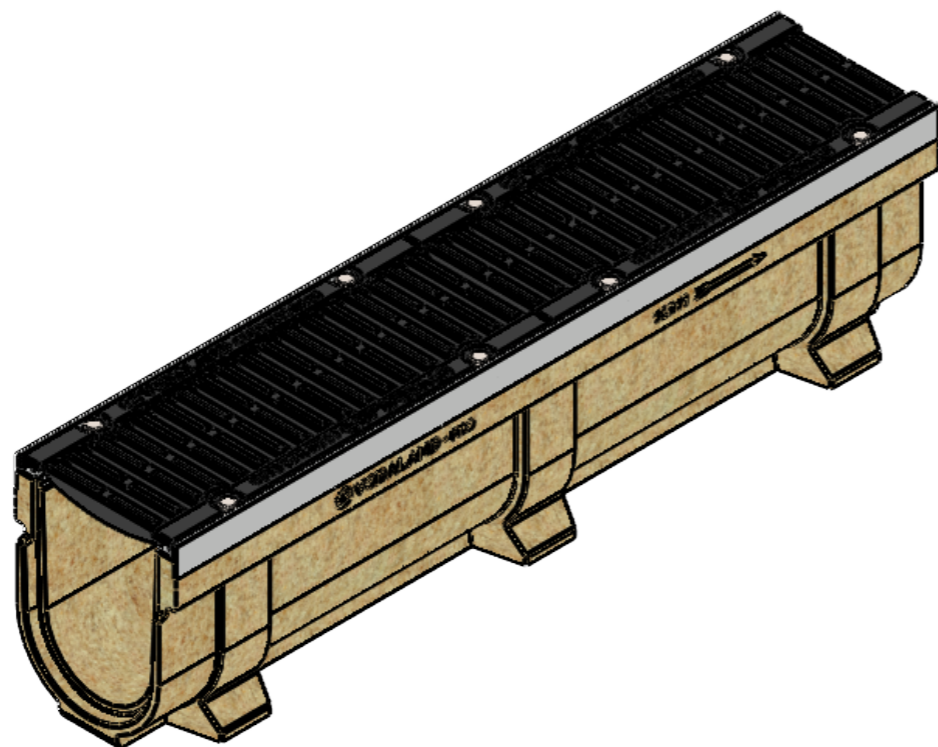
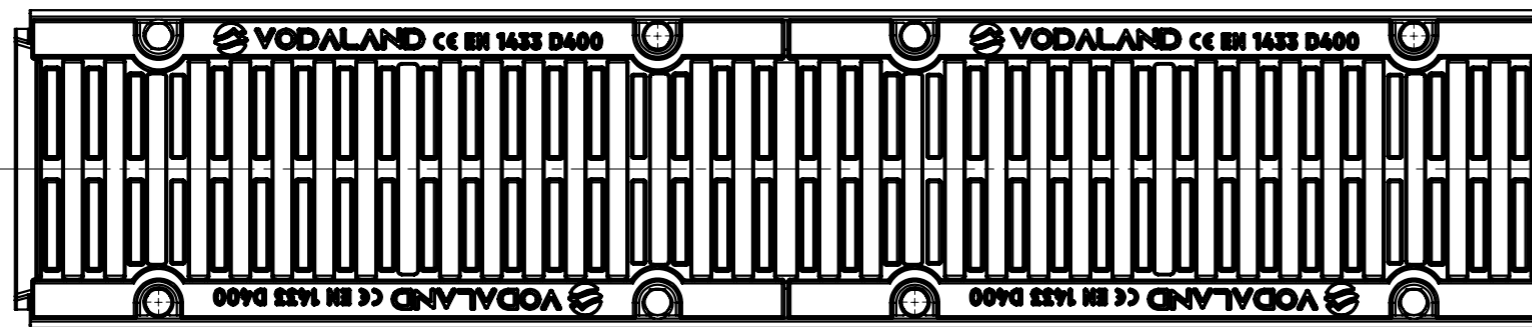
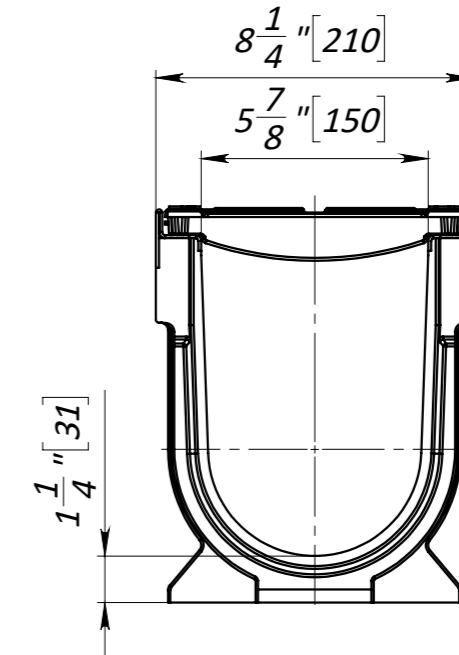
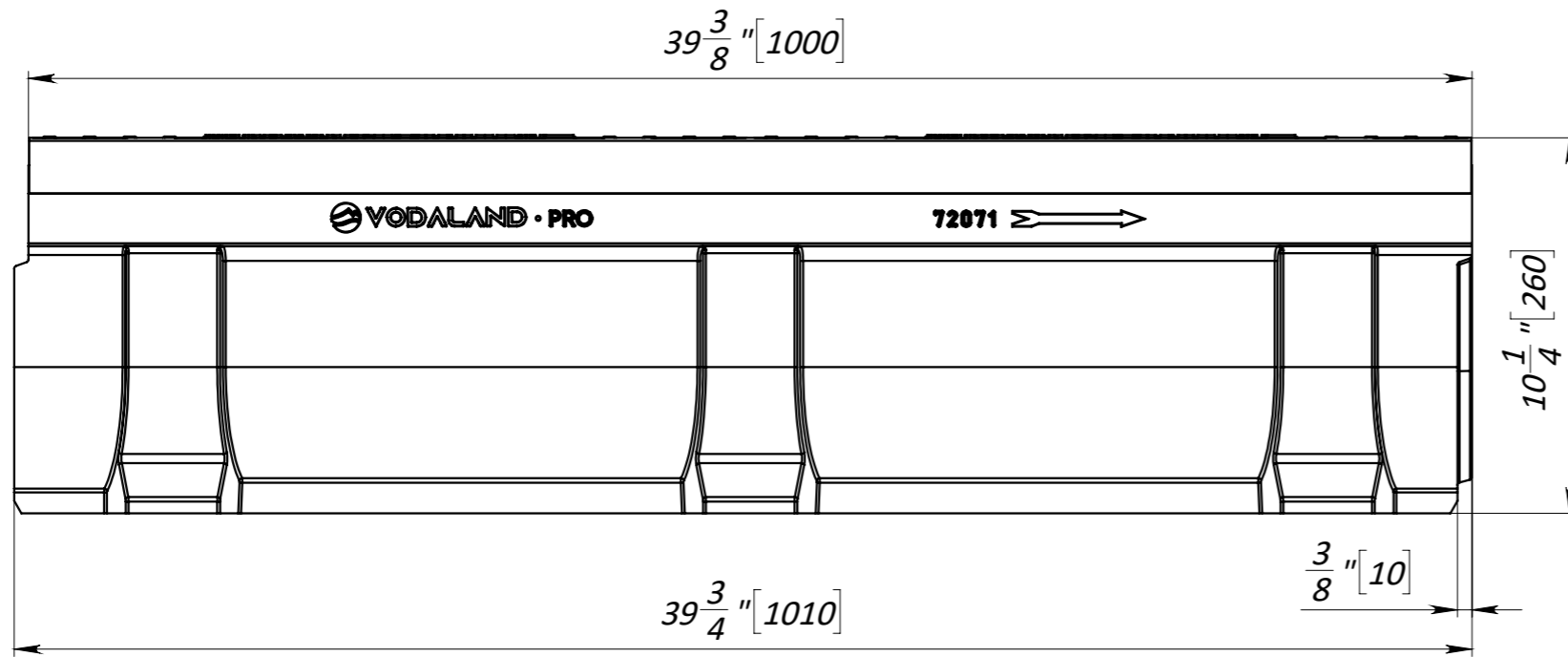
1. Dimensions for reference, inch [mm]
2. Delivery and packaging are carried out in accordance with the terms of the contract
3. The manufacturer reserves the right, without notice to the consumer, to make changes to the design of the products for improvement of their technological and operational parameters, which will not affect the quality and properties of the product
4. Deviation of the actual weight of the nominal can be up to 10%.

UNLESS OTHERWISE SPECIFIED: DIMENSIONS ARE IN MILLIMETERS SURFACE FINISH: TOLERANCES: ISO 2768 - C LINEAR: ANGULAR:			FINISH:		DEBURR AND BREAK SHARP EDGES		DO NOT SCALE DRAWING		REVISION	
										
									TITLE:	
									6" [DN150] Polymer Concrete Drain Channel Pro H8.3" [H210] with Cast Iron Grate D400	
									ARTICLE:	
									072071334/210	
									A3	
					MATERIAL: Polymer Concrete, Ductile Cast Iron					
					WEIGHT: 81,6 lb / 37.10 kg		SCALE: 1:5		SHEET 1 OF 1	



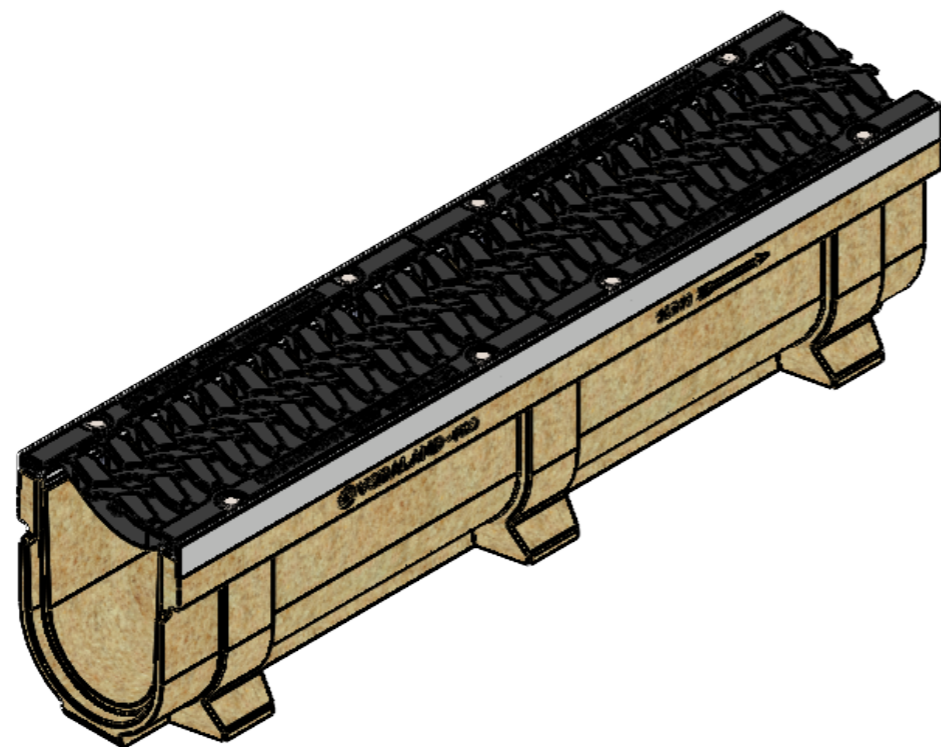
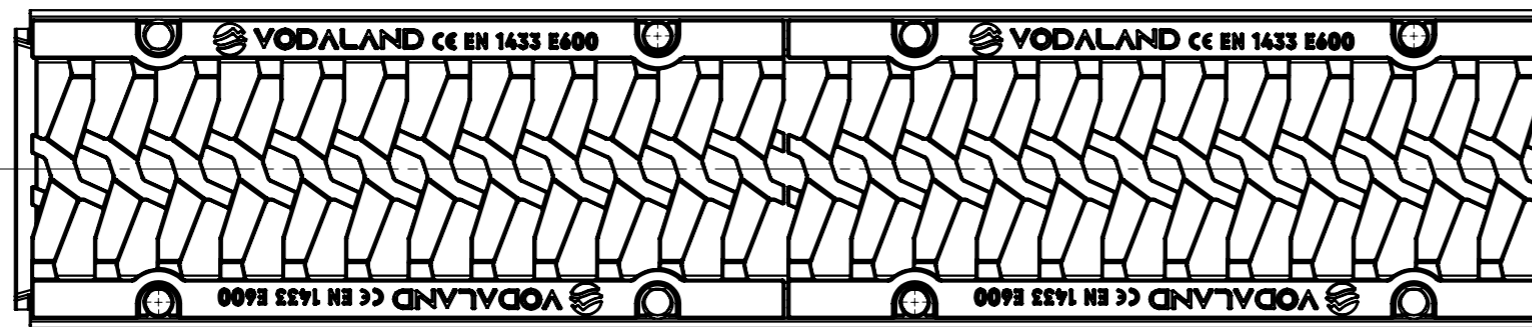
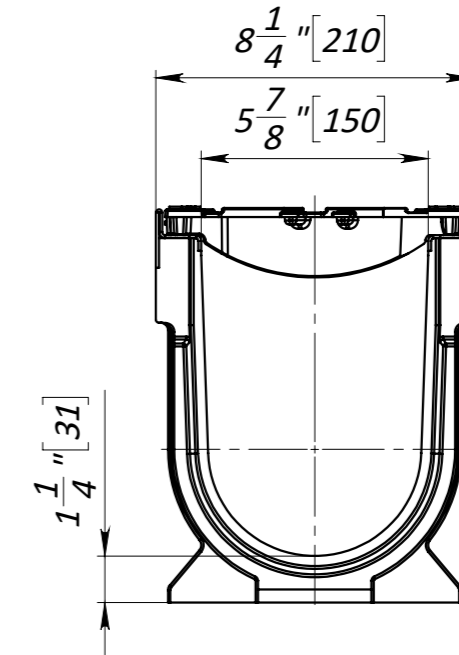
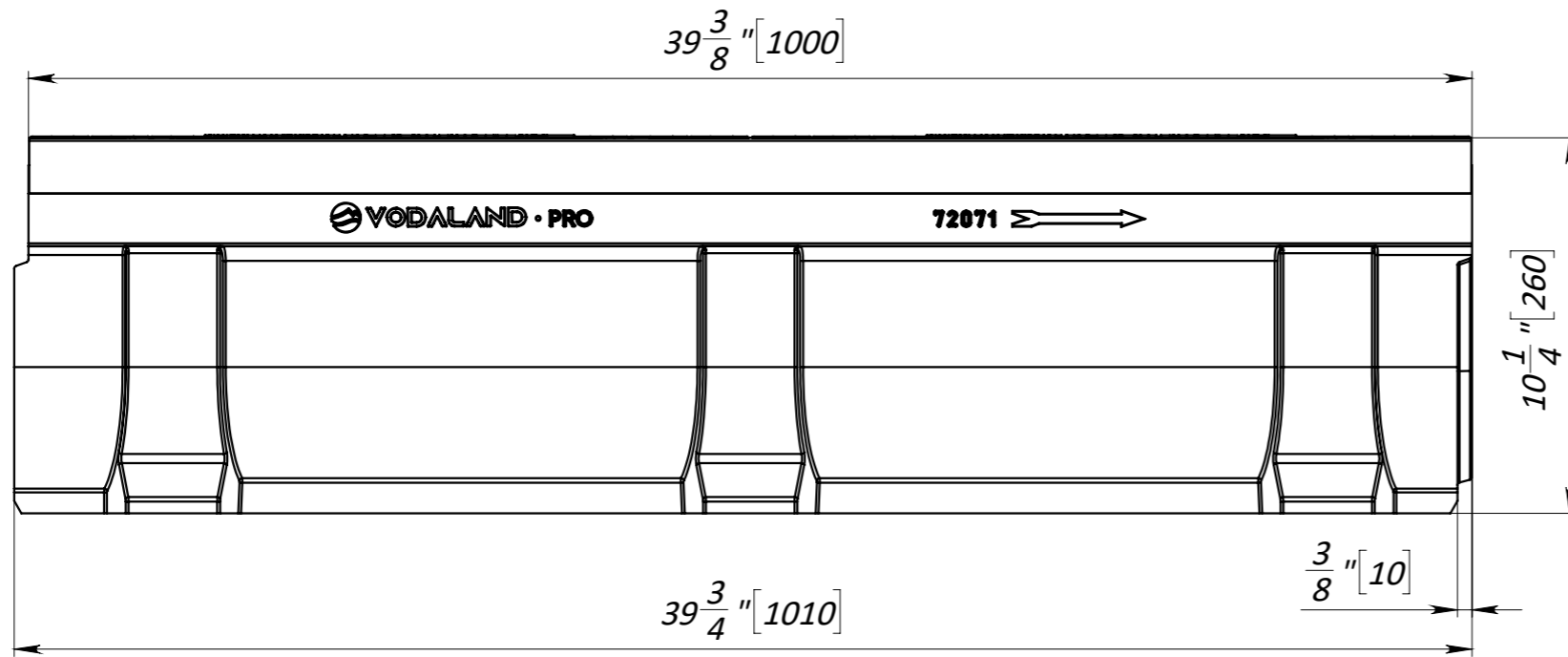
1. Dimensions for reference, inch [mm]
2. Delivery and packaging are carried out in accordance with the terms of the contract
3. The manufacturer reserves the right, without notice to the consumer, to make changes to the design of the products for improvement of their technological and operational parameters, which will not affect the quality and properties of the product
4. Deviation of the actual weight of the nominal can be up to 10%.

UNLESS OTHERWISE SPECIFIED: DIMENSIONS ARE IN MILLIMETERS SURFACE FINISH: TOLERANCES: ISO 2768 - C LINEAR: ANGULAR:		FINISH:	DEBURR AND BREAK SHARP EDGES	DO NOT SCALE DRAWING	REVISION
DRAWN	Kozak	SIGNATURE	DATE	 <b>TITLE:</b> 6" [DN150] Polymer Concrete Drain Channel Pro H8.3" [H210] with Cast Iron Grate E600  <b>ARTICLE:</b> 07207155/210	
CHK'D	Kyselytsia		20.09.22		
APPV'D	Malynovskiy				
MFG					
Q.A					
			MATERIAL: Polymer Concrete, Ductile Cast Iron	SCALE:1:5	A3
			WEIGHT: 86,9 lb / 39.50 kg	SHEET 1 OF 1	




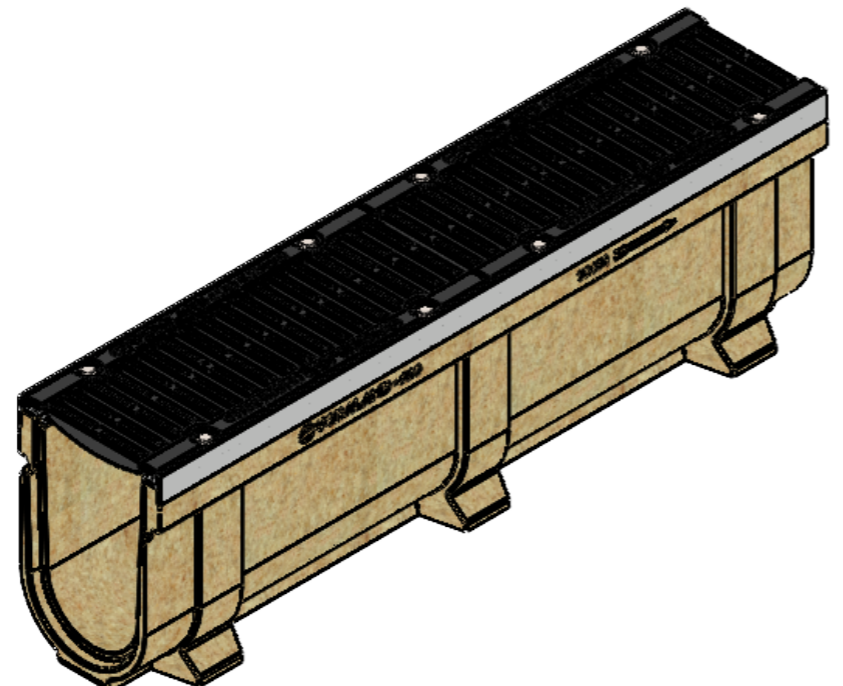
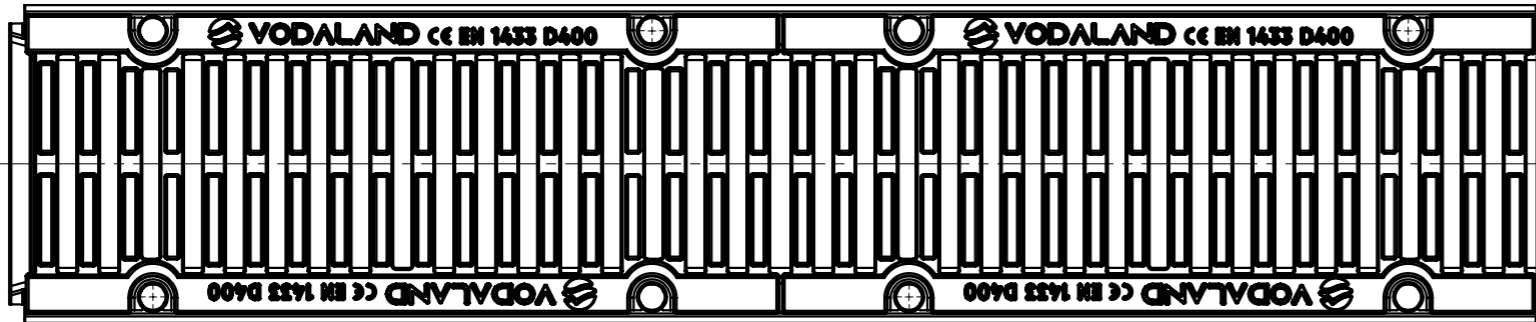
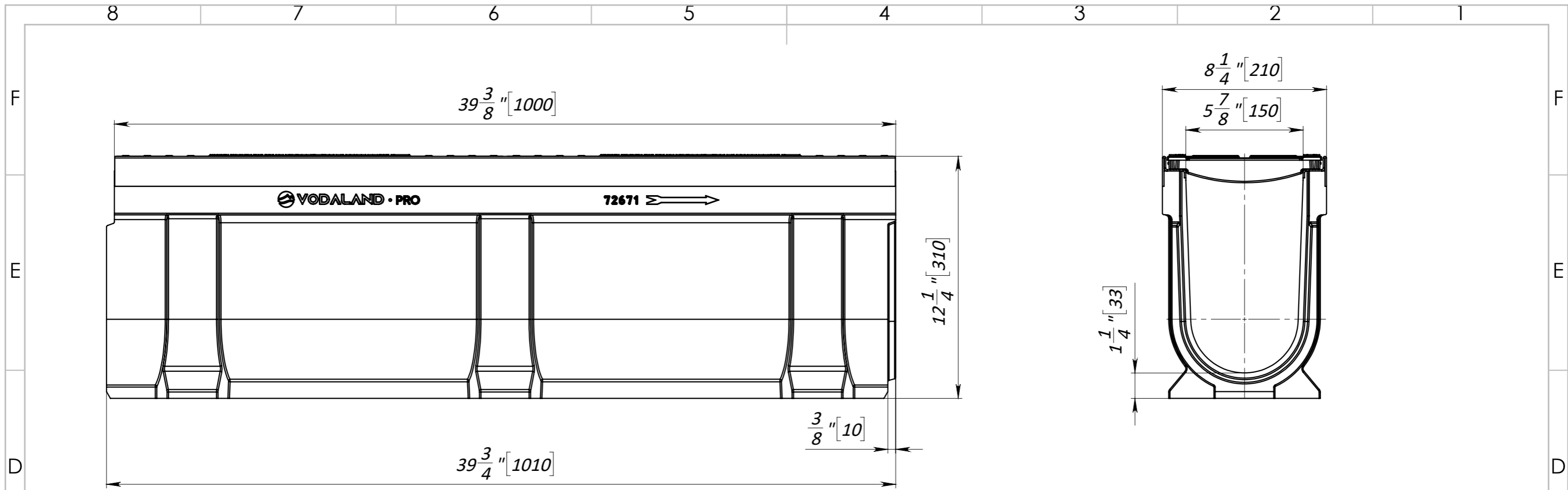
1. Dimensions for reference, inch [mm]
2. Delivery and packaging are carried out in accordance with the terms of the contract
3. The manufacturer reserves the right, without notice to the consumer, to make changes to the design of the products for improvement of their technological and operational parameters, which will not affect the quality and properties of the product
4. Deviation of the actual weight of the nominal can be up to 10%.

UNLESS OTHERWISE SPECIFIED: DIMENSIONS ARE IN MILLIMETERS SURFACE FINISH: TOLERANCES: ISO 2768 - C LINEAR: ANGULAR:		FINISH:		DEBURR AND BREAK SHARP EDGES		DO NOT SCALE DRAWING		REVISION	
DRAWN		NAME		SIGNATURE		DATE		TITLE:	
CHK'D		Kozak				20.09.22		6" [DN150] Polymer Concrete Drain Channel Pro H10.2" [H260] with Cast Iron Grate D400	
APPV'D		Kyselytsia						ARTICLE:	
MFG		Malynovskiy						072071334/260	
Q.A						MATERIAL: Polymer Concrete, Ductile Cast Iron		A3	
						WEIGHT: 91,7 lb / 41.67 kg		SCALE: 1:5	
								SHEET 1 OF 1	




1. Dimensions for reference, inch [mm]
2. Delivery and packaging are carried out in accordance with the terms of the contract
3. The manufacturer reserves the right, without notice to the consumer, to make changes to the design of the products for improvement of their technological and operational parameters, which will not affect the quality and properties of the product
4. Deviation of the actual weight of the nominal can be up to 10%.

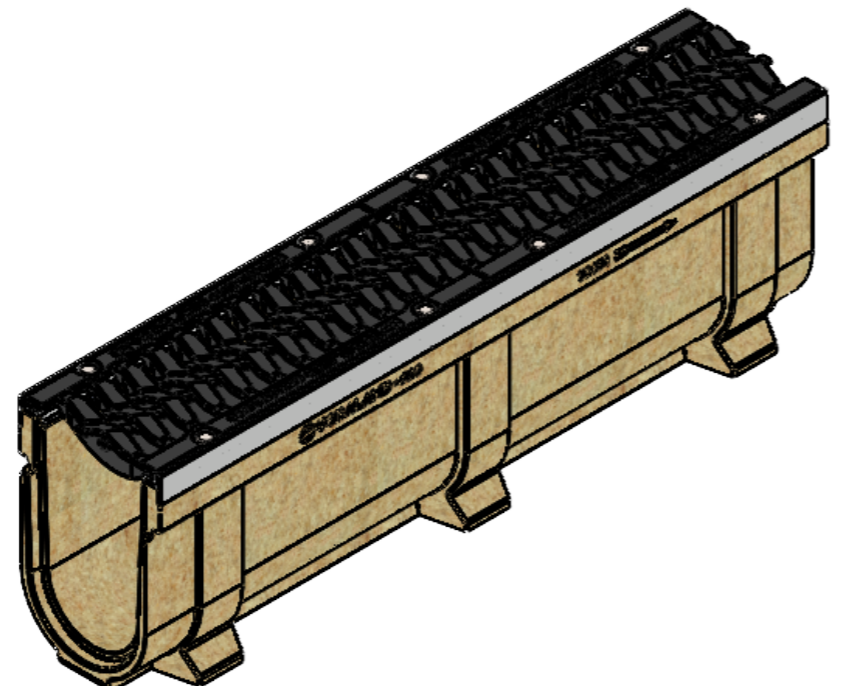
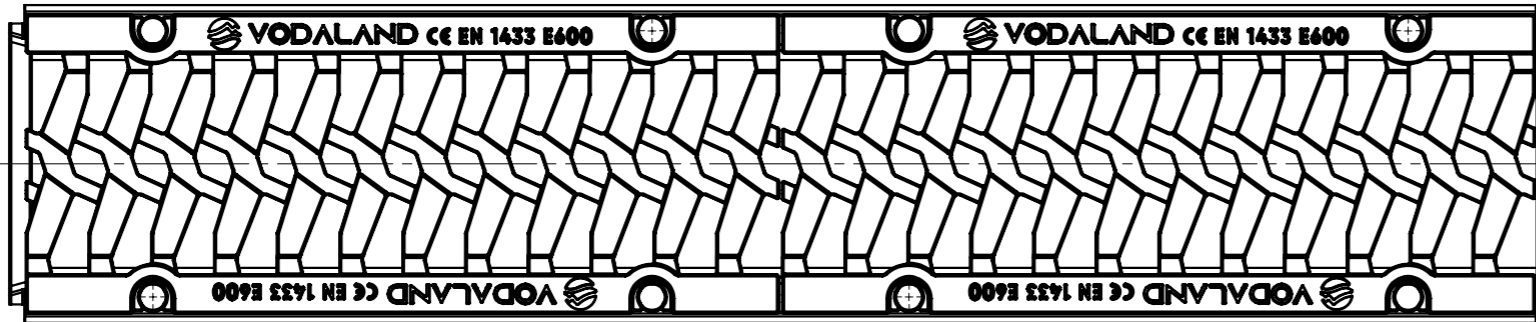
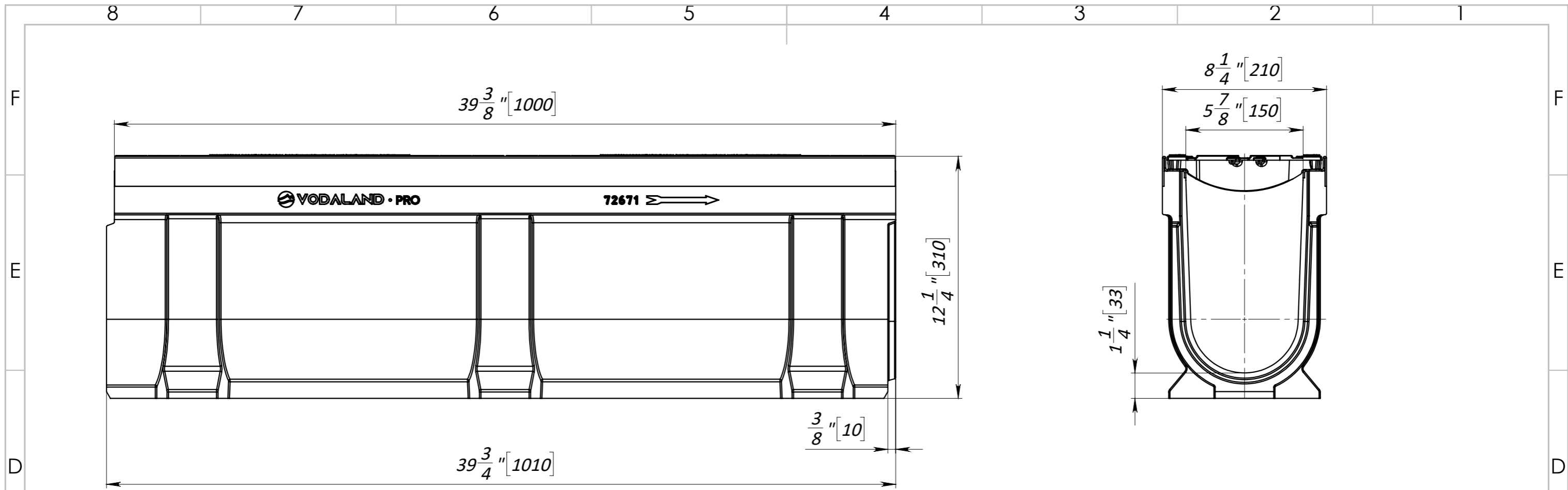
UNLESS OTHERWISE SPECIFIED: DIMENSIONS ARE IN MILLIMETERS SURFACE FINISH: TOLERANCES: ISO 2768 - C LINEAR: ANGULAR:		FINISH:	DEBURR AND BREAK SHARP EDGES	DO NOT SCALE DRAWING	REVISION
DRAWN	Kozak	SIGNATURE	DATE	 <b>TITLE:</b> 6" [DN150] Polymer Concrete Drain Channel Pro H10.2" [H260] with Cast Iron Grate E600  <b>ARTICLE:</b> 07207155/260	
CHK'D	Kyselytsia		20.09.22		
APPV'D	Malynovskiy				
MFG					
Q.A					
MATERIAL: Polymer Concrete, Ductile Cast Iron			WEIGHT: 97 lb / 44.07 kg	SCALE: 1:5	A3
				SHEET 1 OF 1	




1. Dimensions for reference, inch [mm]
2. Delivery and packaging are carried out in accordance with the terms of the contract
3. The manufacturer reserves the right, without notice to the consumer, to make changes to the design of the products for improvement of their technological and operational parameters, which will not affect the quality and properties of the product
4. Deviation of the actual weight of the nominal can be up to 10%.

UNLESS OTHERWISE SPECIFIED: DIMENSIONS ARE IN MILLIMETERS SURFACE FINISH: TOLERANCES: ISO 2768 - C LINEAR: ANGULAR:		FINISH:	DEBURR AND BREAK SHARP EDGES	DO NOT SCALE DRAWING	REVISION
DRAWN: Kozak		SIGNATURE:	DATE: 20.09.22	 <b>TITLE:</b> 6" [DN150] Polymer Concrete Drain Channel Pro H12.2" [H310] with Cast Iron Grate D400 <b>ARTICLE:</b> 072071334/310	
CHK'D: Kyselytsia					
APPV'D: Malynovskiy					
MFG:					
Q.A:					
		MATERIAL: Polymer Concrete, Ductile Cast Iron		SCALE: 1:5	
		WEIGHT: 102,4 lb / 46.53 kg		SHEET 1 OF 1	

A3



1. Dimensions for reference, inch [mm]
2. Delivery and packaging are carried out in accordance with the terms of the contract
3. The manufacturer reserves the right, without notice to the consumer, to make changes to the design of the products for improvement of their technological and operational parameters, which will not affect the quality and properties of the product
4. Deviation of the actual weight of the nominal can be up to 10%.

UNLESS OTHERWISE SPECIFIED: DIMENSIONS ARE IN MILLIMETERS SURFACE FINISH: TOLERANCES: ISO 2768 - C LINEAR: ANGULAR:		FINISH:	DEBURR AND BREAK SHARP EDGES	DO NOT SCALE DRAWING	REVISION
DRAWN: Kozak		SIGNATURE:	DATE: 20.09.22	 <b>TITLE:</b> 6" [DN150] Polymer Concrete Drain Channel Pro H12.2" [H310] with Cast Iron Grate E600 <b>ARTICLE:</b> 07207155/310	
CHK'D: Kyselytsia					
APPV'D: Malynovskiy					
MFG:					
Q.A:					
		MATERIAL: Polymer Concrete, Ductile Cast Iron		SCALE: 1:5	
		WEIGHT: 107,6 lb / 48.92 kg		SHEET 1 OF 1	

A3