
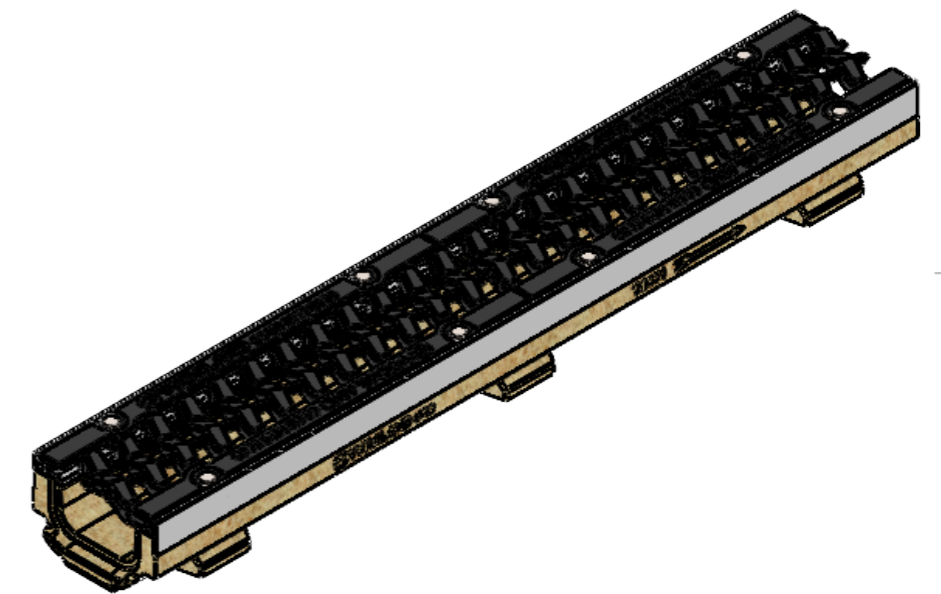
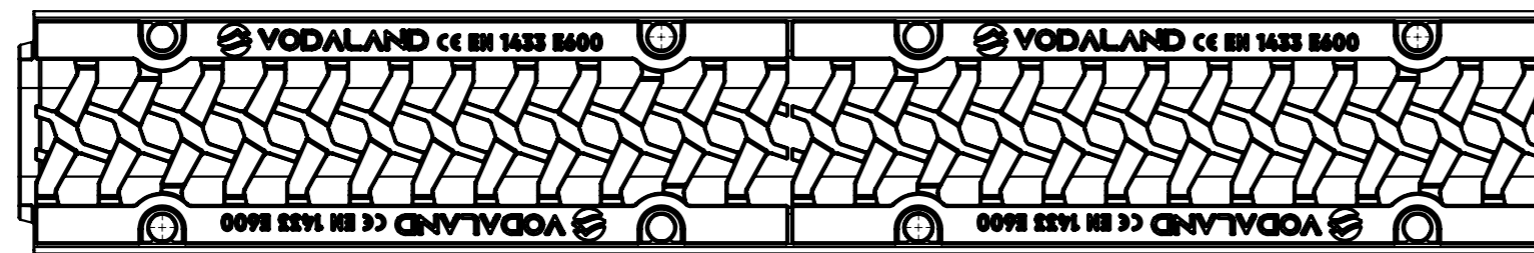
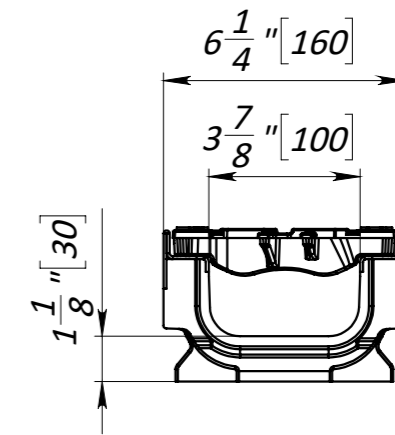
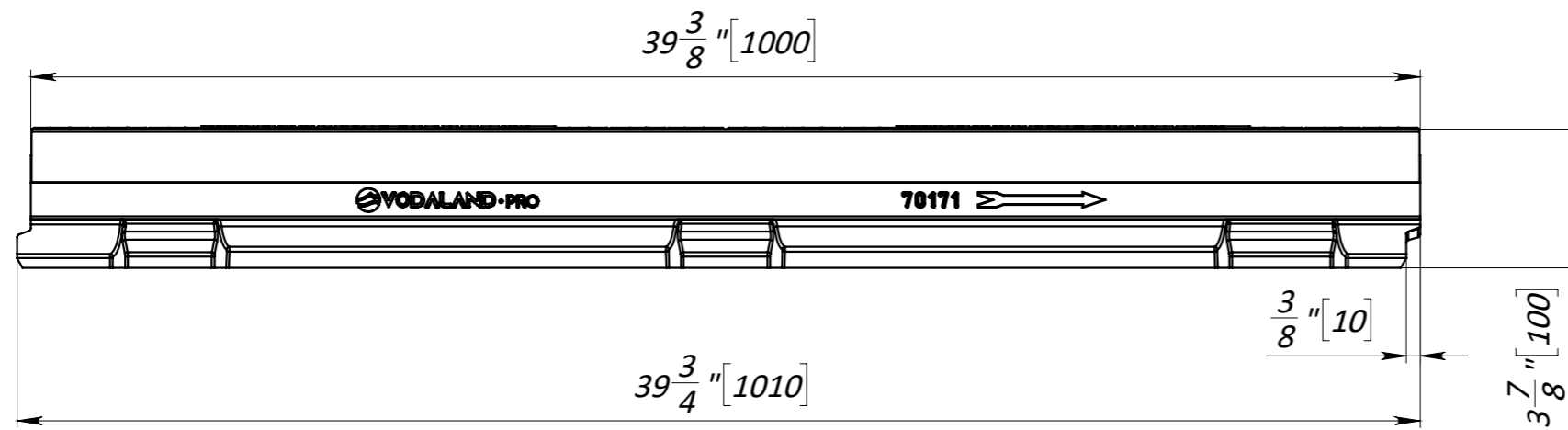



1. Dimensions for reference, inch [mm]
2. Delivery and packaging are carried out in accordance with the terms of the contract
3. The manufacturer reserves the right, without notice to the consumer, to make changes to the design of the products for improvement of their technological and operational parameters, which will not affect the quality and properties of the product
4. Deviation of the actual weight of the nominal can be up to 10%.

UNLESS OTHERWISE SPECIFIED: DIMENSIONS ARE IN MILLIMETERS SURFACE FINISH: TOLERANCES: ISO 2768 - C LINEAR: ANGULAR:		FINISH:	DEBURR AND BREAK SHARP EDGES	DO NOT SCALE DRAWING	REVISION
DRAWN Kozak		SIGNATURE	DATE 16.09.22	 TITLE: 4" [DN100] Polymer Concrete Drain Channel Pro H3.9" [H100] with Cast Iron Grate D400 ARTICLE: 070071334/100	
CHK'D Kyselytsia					
APPV'D Malynovskiy					
MFG					
Q.A					
MATERIAL: Polymer Concrete, Ductile Cast Iron			WEIGHT: 51 lb / 23.19 kg	SCALE: 1:5	SHEET 1 OF 1

A3



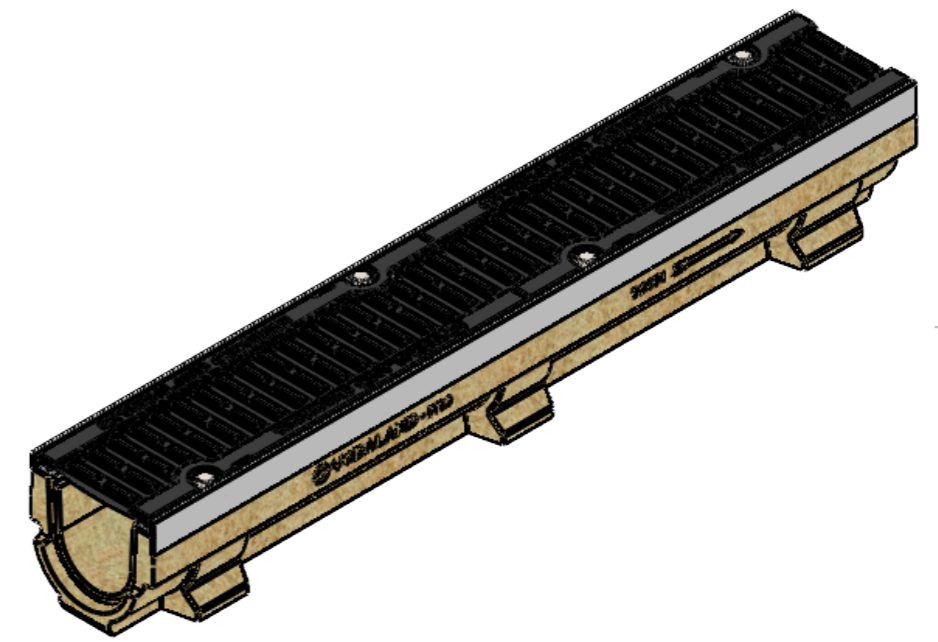
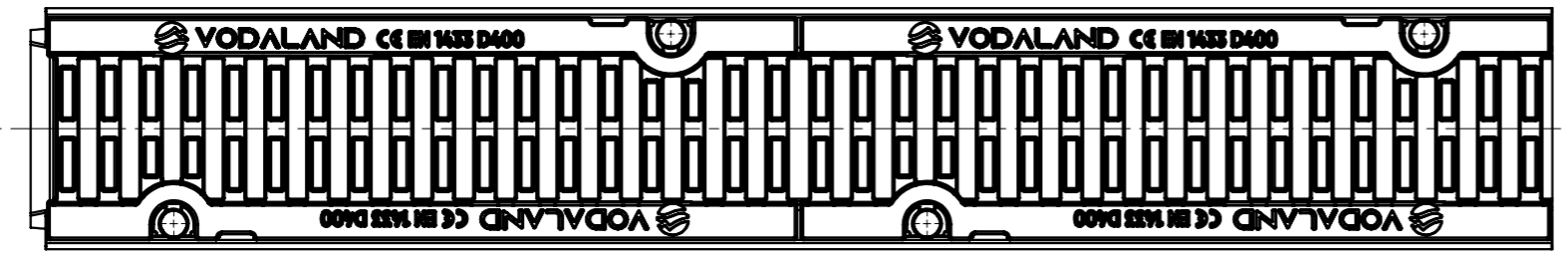
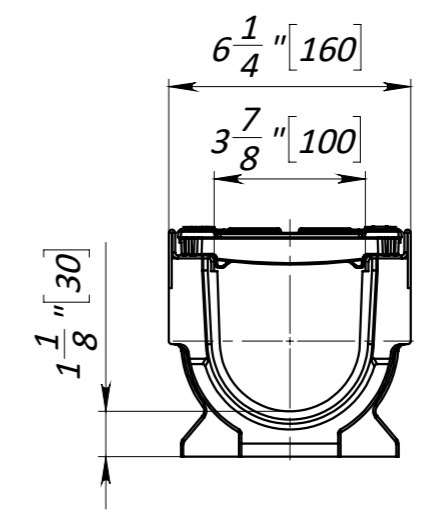
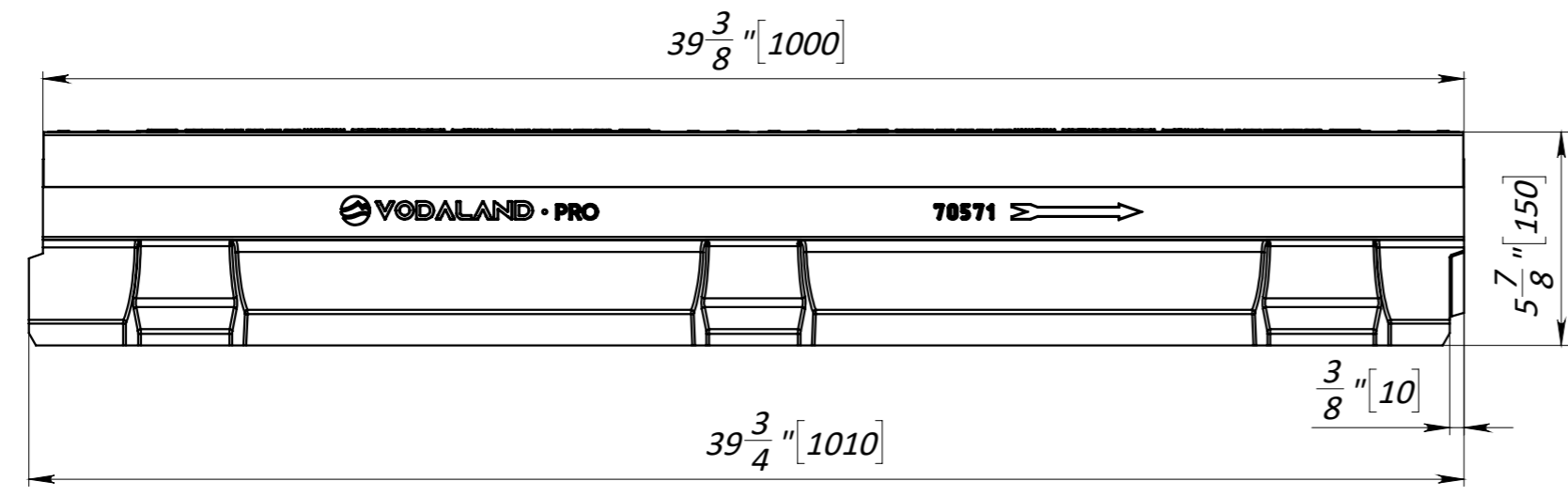
1. Dimensions for reference, inch [mm]
2. Delivery and packaging are carried out in accordance with the terms of the contract
3. The manufacturer reserves the right, without notice to the consumer, to make changes to the design of the products for improvement of their technological and operational parameters, which will not affect the quality and properties of the product
4. Deviation of the actual weight of the nominal can be up to 10%.

UNLESS OTHERWISE SPECIFIED: DIMENSIONS ARE IN MILLIMETERS SURFACE FINISH: TOLERANCES: ISO 2768 - C LINEAR: ANGULAR:		FINISH:	DEBURR AND BREAK SHARP EDGES	DO NOT SCALE DRAWING	REVISION
DRAWN: Kozak		SIGNATURE:	DATE: 16.09.22	 TITLE: 4" [DN100] Polymer Concrete Drain Channel Pro H3.9" [H100] with Cast Iron Grate E600 ARTICLE: 07007155/100	
CHK'D: Kyselytsia					
APPV'D: Malynovskiy					
MFG:					
Q.A:					
		MATERIAL: Polymer Concrete, Ductile Cast Iron		SCALE: 1:5	
		WEIGHT: 52,3 lb / 23.78 kg		SHEET 1 OF 1	

A3

8 7 6 5 4 3 2 1

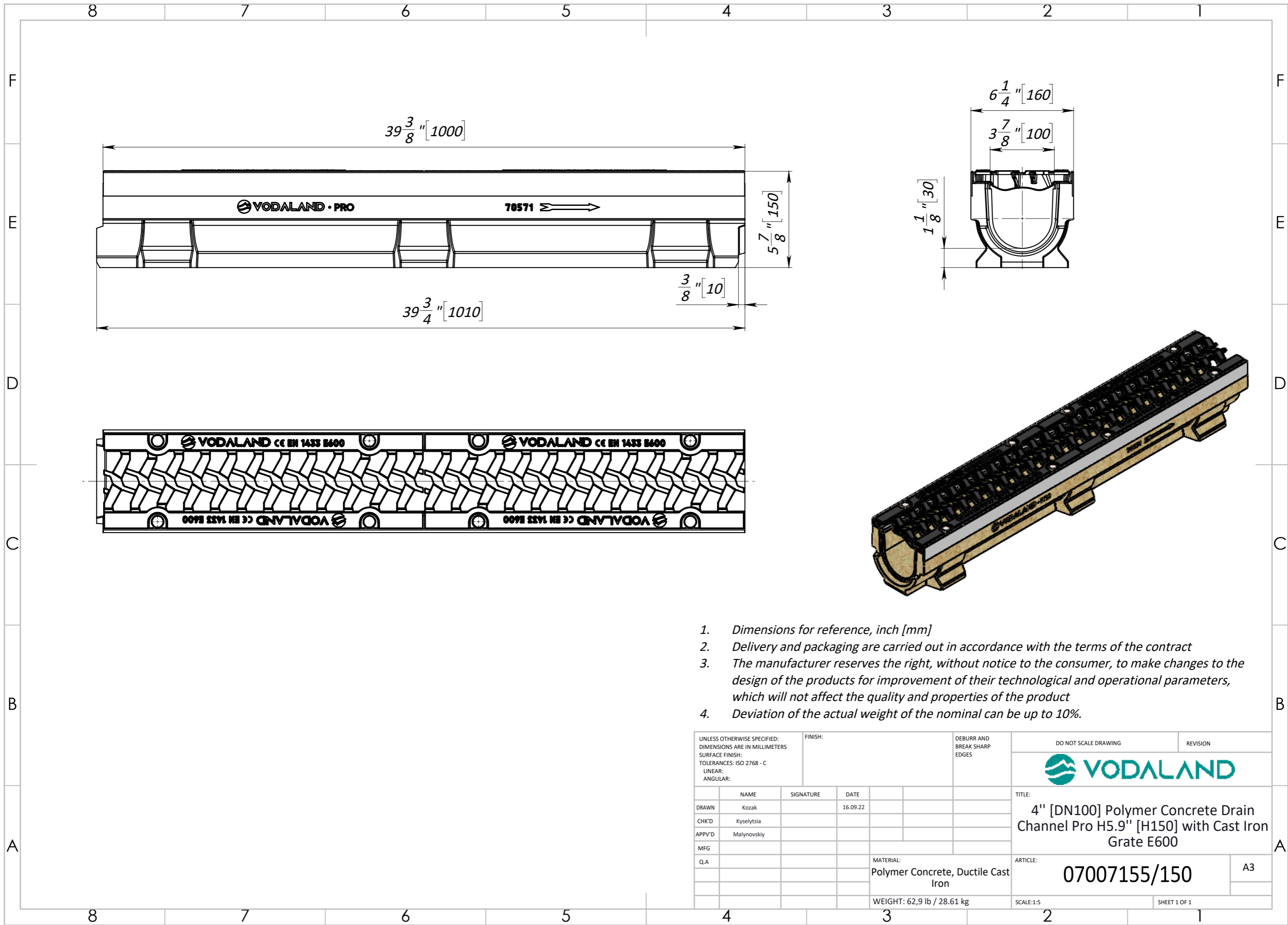
F
E
D
C
B
A




1. Dimensions for reference, inch [mm]
2. Delivery and packaging are carried out in accordance with the terms of the contract
3. The manufacturer reserves the right, without notice to the consumer, to make changes to the design of the products for improvement of their technological and operational parameters, which will not affect the quality and properties of the product
4. Deviation of the actual weight of the nominal can be up to 10%.

UNLESS OTHERWISE SPECIFIED: DIMENSIONS ARE IN MILLIMETERS SURFACE FINISH: TOLERANCES: ISO 2768 - C LINEAR: ANGULAR:		FINISH:		DEBURR AND BREAK SHARP EDGES		DO NOT SCALE DRAWING		REVISION	
DRAWN		NAME		SIGNATURE		DATE		TITLE:	
CHK'D		Kozak				16.09.22		4" [DN100] Polymer Concrete Drain Channel Pro H5.9" [H150] with Cast Iron Grate D400	
APPV'D		Kyselytsia						ARTICLE:	
MFG		Malynovskiy						070071334/150	
Q.A						MATERIAL: Polymer Concrete, Ductile Cast Iron		A3	
						WEIGHT: 61,3 lb / 27.84 kg		SCALE: 1:5	
								SHEET 1 OF 1	

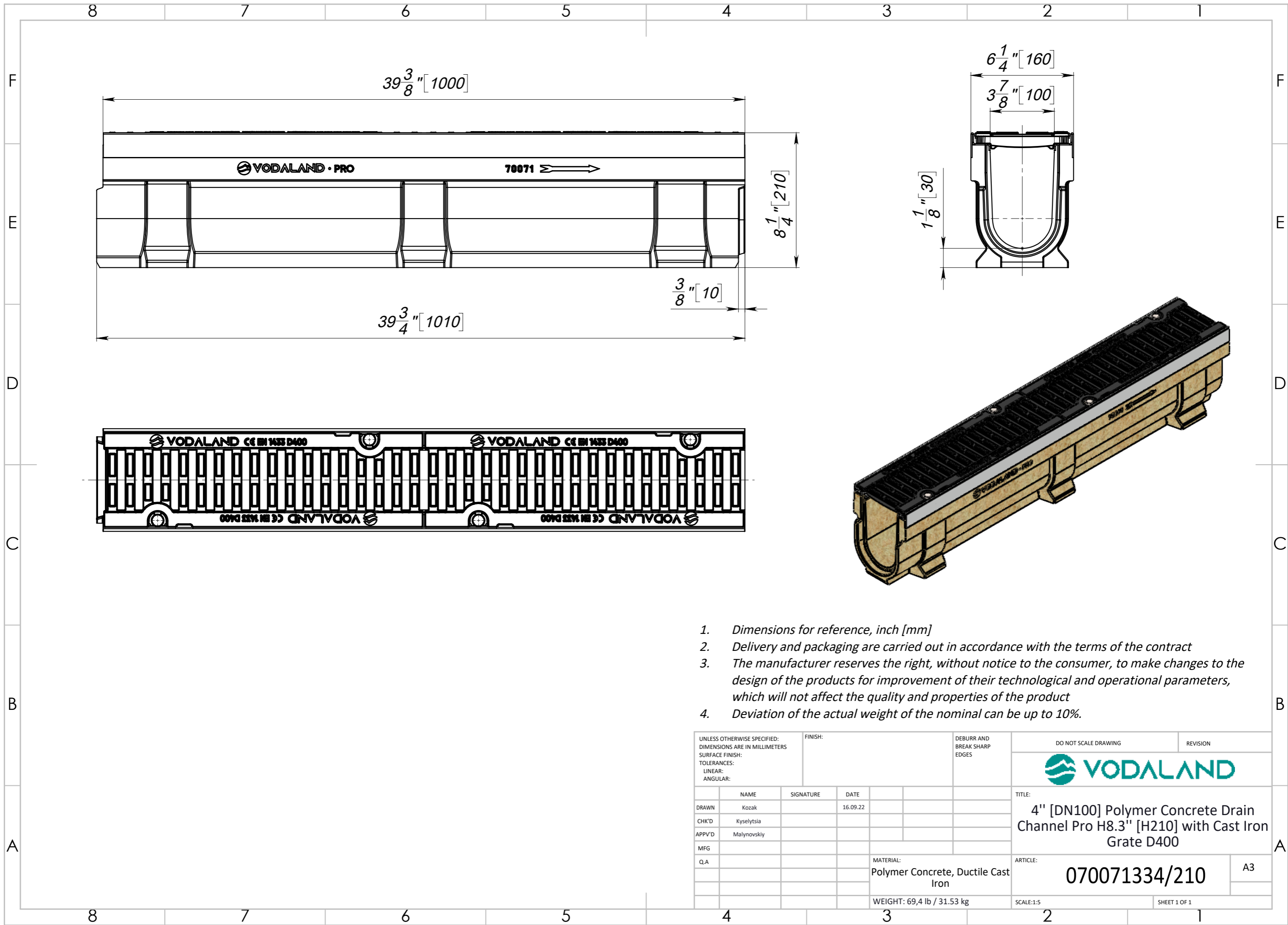
8 7 6 5 4 3 2 1




1. Dimensions for reference, inch [mm]
2. Delivery and packaging are carried out in accordance with the terms of the contract
3. The manufacturer reserves the right, without notice to the consumer, to make changes to the design of the products for improvement of their technological and operational parameters, which will not affect the quality and properties of the product
4. Deviation of the actual weight of the nominal can be up to 10%.

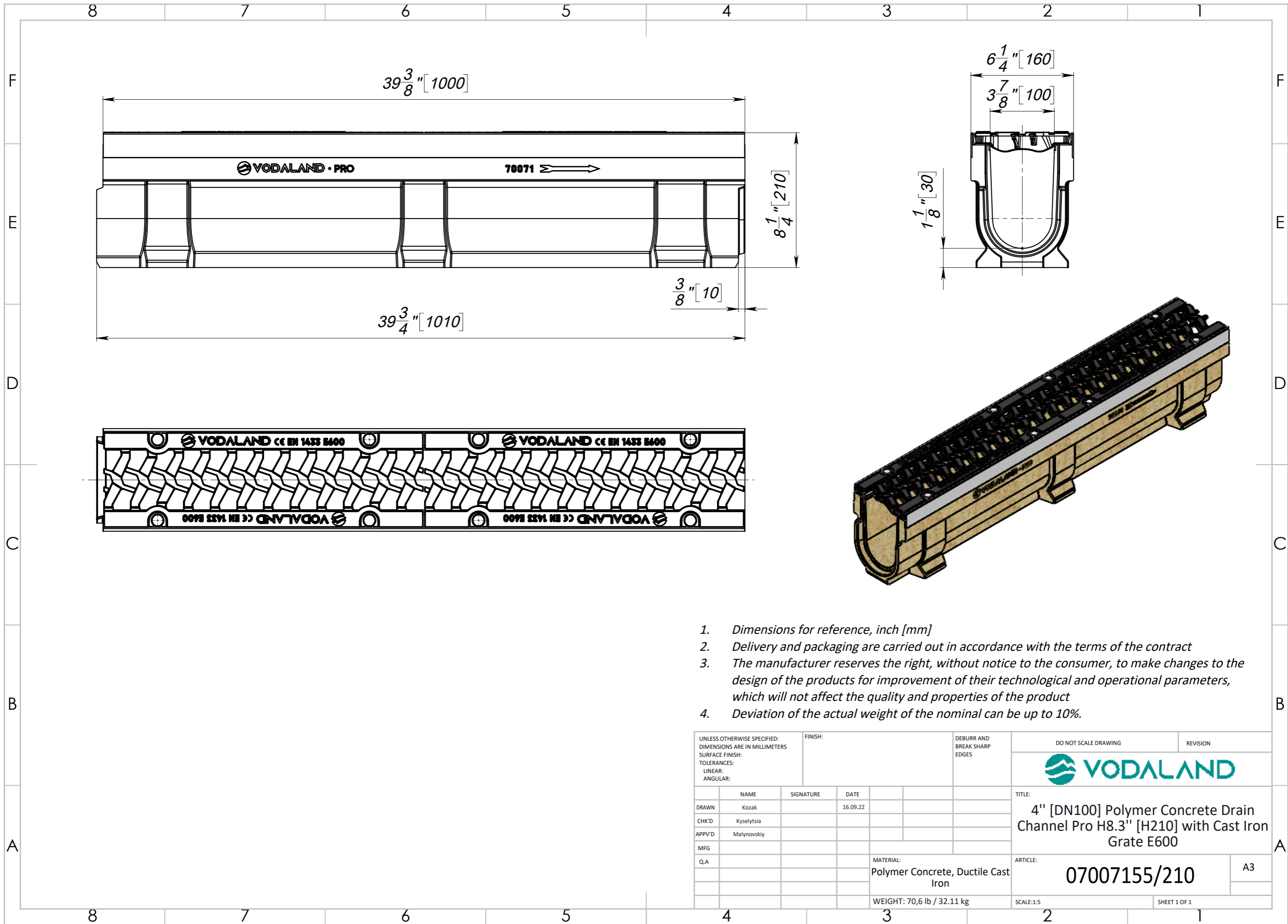
UNLESS OTHERWISE SPECIFIED: DIMENSIONS ARE IN MILLIMETERS SURFACE FINISH: TOLERANCES: ISO 2768 - C LINEAR: ANGULAR:		FINISH:	DEBURR AND BREAK SHARP EDGES	DO NOT SCALE DRAWING	REVISION
DRAWN: Kozak		SIGNATURE:	DATE: 16.09.22	 TITLE: 4" [DN100] Polymer Concrete Drain Channel Pro H5.9" [H150] with Cast Iron Grate E600 ARTICLE: 07007155/150	
CHK'D: Kyselytsia					
APPV'D: Malynovskiy					
MFG:					
Q.A:					
		MATERIAL: Polymer Concrete, Ductile Cast Iron		SCALE: 1:5	
		WEIGHT: 62,9 lb / 28.61 kg		SHEET 1 OF 1	

A3




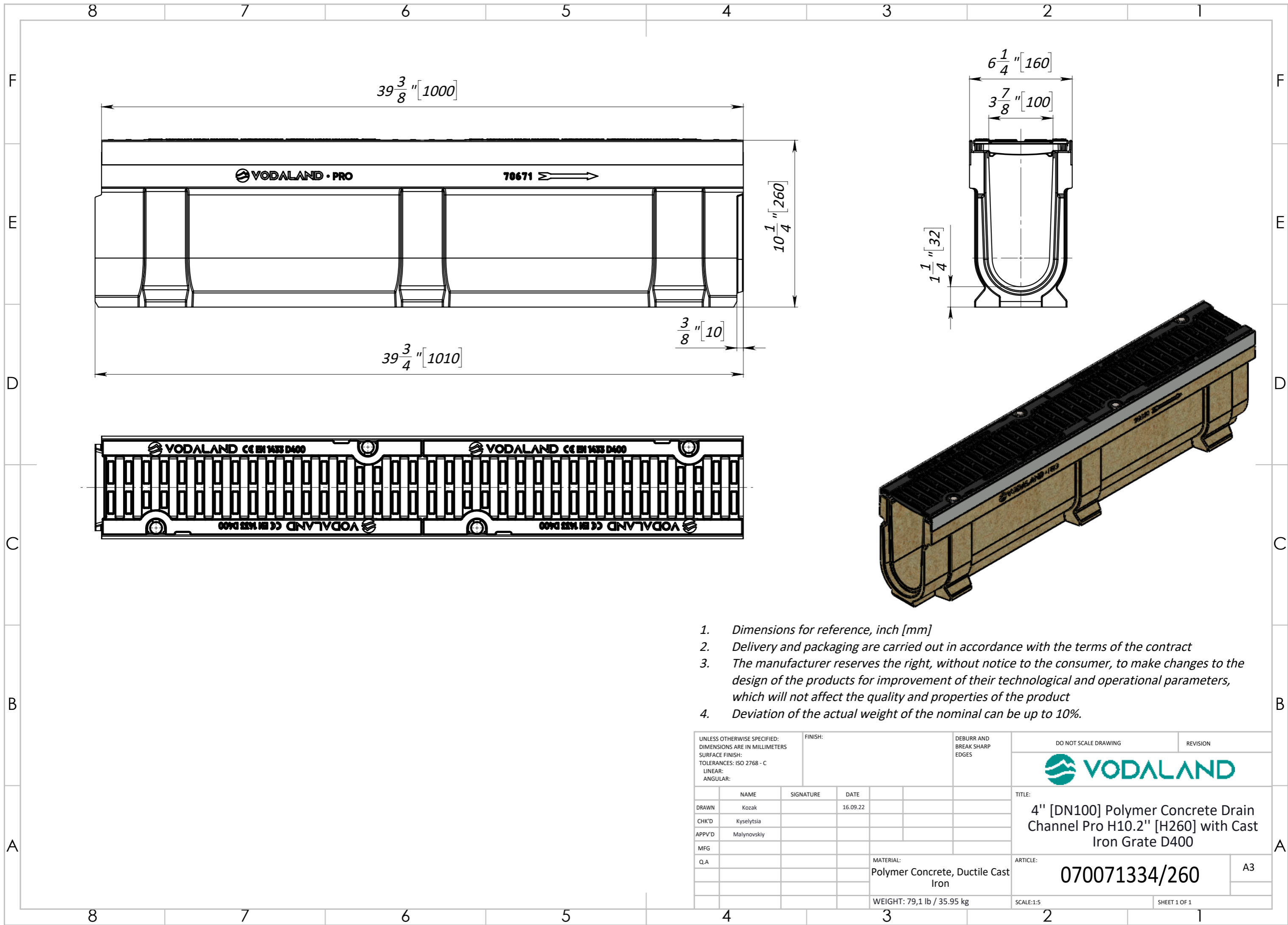
1. Dimensions for reference, inch [mm]
2. Delivery and packaging are carried out in accordance with the terms of the contract
3. The manufacturer reserves the right, without notice to the consumer, to make changes to the design of the products for improvement of their technological and operational parameters, which will not affect the quality and properties of the product
4. Deviation of the actual weight of the nominal can be up to 10%.

UNLESS OTHERWISE SPECIFIED: DIMENSIONS ARE IN MILLIMETERS		FINISH:		DEBURR AND BREAK SHARP EDGES		DO NOT SCALE DRAWING		REVISION	
SURFACE FINISH:									
TOLERANCES:								TITLE:	
LINEAR:						4" [DN100] Polymer Concrete Drain			
ANGULAR:						Channel Pro H8.3" [H210] with Cast Iron			
						Grate D400			
						ARTICLE:		A3	
						070071334/210			
						MATERIAL:			
						Polymer Concrete, Ductile Cast			
						Iron			
						WEIGHT: 69,4 lb / 31.53 kg			
						SCALE: 1:5		SHEET 1 OF 1	



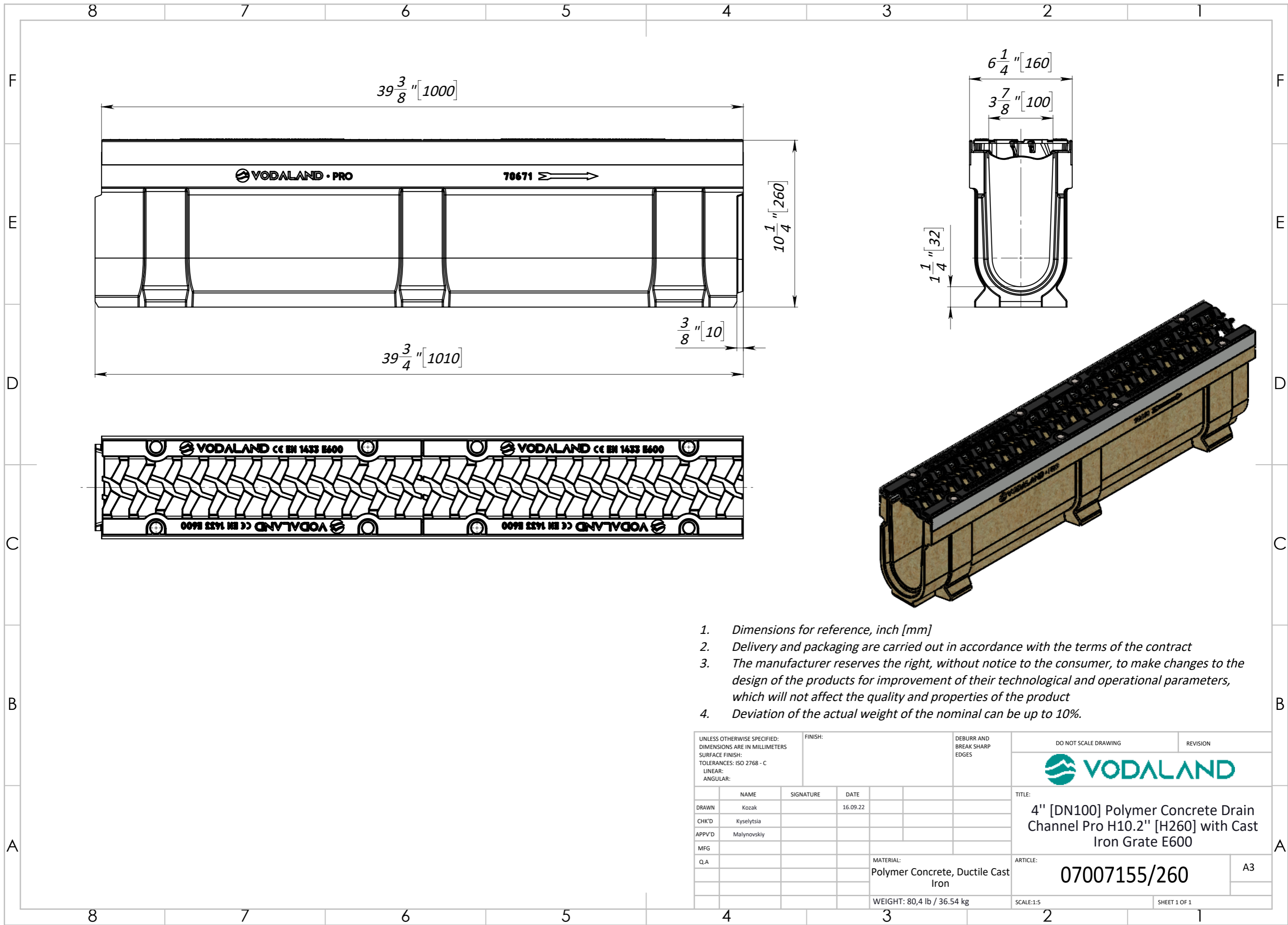
1. Dimensions for reference, inch [mm]
2. Delivery and packaging are carried out in accordance with the terms of the contract
3. The manufacturer reserves the right, without notice to the consumer, to make changes to the design of the products for improvement of their technological and operational parameters, which will not affect the quality and properties of the product
4. Deviation of the actual weight of the nominal can be up to 10%.

UNLESS OTHERWISE SPECIFIED: DIMENSIONS ARE IN MILLIMETERS		FINISH:		DEBURR AND BREAK SHARP EDGES		DO NOT SCALE DRAWING		REVISION	
SURFACE FINISH:									
TOLERANCES:								TITLE:	
LINEAR:						4" [DN100] Polymer Concrete Drain			
ANGULAR:						Channel Pro H8.3" [H210] with Cast Iron			
						Grate E600			
DRAWN		NAME		SIGNATURE		DATE		ARTICLE:	
CHK'D		Kozak				16.09.22		07007155/210	
APPV'D		Kyselytsia						A3	
MFG		Malynovskiy						SCALE:1:5	
Q.A								SHEET 1 OF 1	
						MATERIAL:			
						Polymer Concrete, Ductile Cast			
						Iron			
						WEIGHT: 70,6 lb / 32.11 kg			




1. Dimensions for reference, inch [mm]
2. Delivery and packaging are carried out in accordance with the terms of the contract
3. The manufacturer reserves the right, without notice to the consumer, to make changes to the design of the products for improvement of their technological and operational parameters, which will not affect the quality and properties of the product
4. Deviation of the actual weight of the nominal can be up to 10%.

UNLESS OTHERWISE SPECIFIED: DIMENSIONS ARE IN MILLIMETERS SURFACE FINISH: TOLERANCES: ISO 2768 - C LINEAR: ANGULAR:		FINISH:		DEBURR AND BREAK SHARP EDGES		DO NOT SCALE DRAWING		REVISION	
DRAWN		NAME		SIGNATURE		DATE		TITLE:	
CHK'D		Kozak				16.09.22		4" [DN100] Polymer Concrete Drain Channel Pro H10.2" [H260] with Cast Iron Grate D400	
APPV'D		Kyselytsia						ARTICLE:	
MFG		Malynovskiy						070071334/260	
Q.A								A3	
						MATERIAL: Polymer Concrete, Ductile Cast Iron		SCALE:1:5	
						WEIGHT: 79,1 lb / 35.95 kg		SHEET 1 OF 1	



1. Dimensions for reference, inch [mm]
2. Delivery and packaging are carried out in accordance with the terms of the contract
3. The manufacturer reserves the right, without notice to the consumer, to make changes to the design of the products for improvement of their technological and operational parameters, which will not affect the quality and properties of the product
4. Deviation of the actual weight of the nominal can be up to 10%.

UNLESS OTHERWISE SPECIFIED: DIMENSIONS ARE IN MILLIMETERS SURFACE FINISH: TOLERANCES: ISO 2768 - C LINEAR: ANGULAR:		FINISH:	DEBURR AND BREAK SHARP EDGES	DO NOT SCALE DRAWING	REVISION
DRAWN: Kozak		SIGNATURE:	DATE: 16.09.22	 TITLE: 4" [DN100] Polymer Concrete Drain Channel Pro H10.2" [H260] with Cast Iron Grate E600 ARTICLE: 07007155/260	
CHK'D: Kyselytsia					
APPV'D: Malynovskiy					
MFG:					
Q.A:					
		MATERIAL: Polymer Concrete, Ductile Cast Iron		SCALE: 1:5	
		WEIGHT: 80,4 lb / 36.54 kg		SHEET 1 OF 1	

A3