


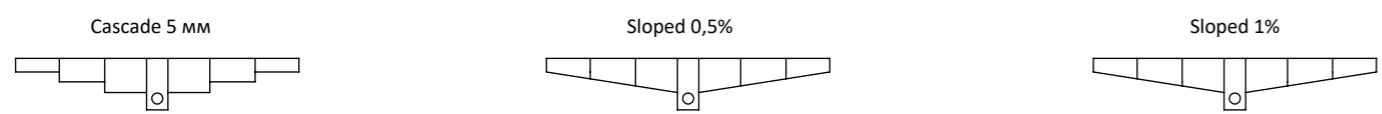
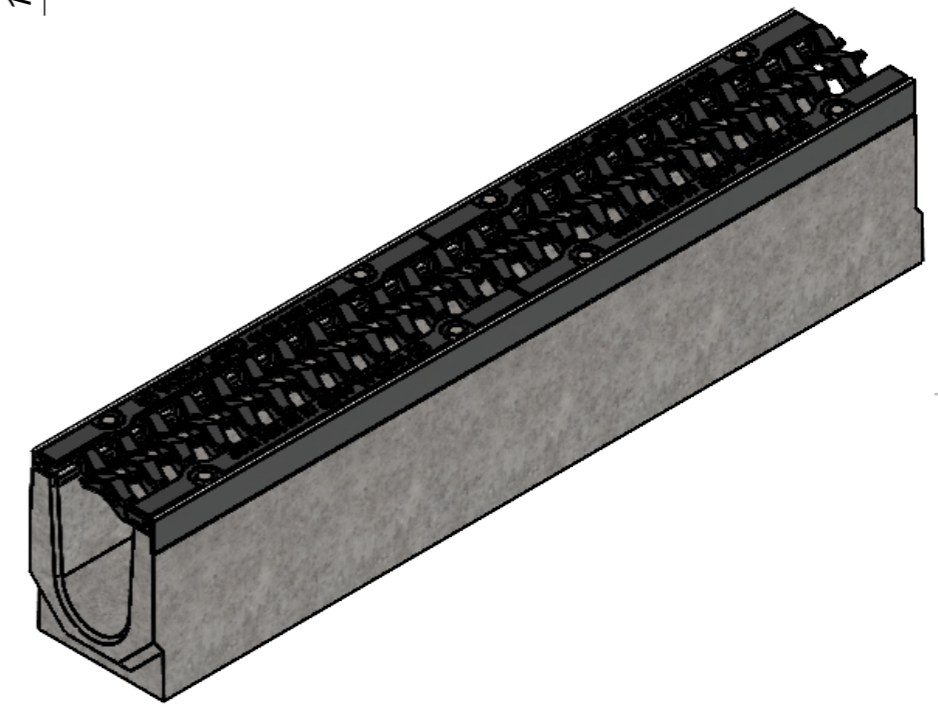
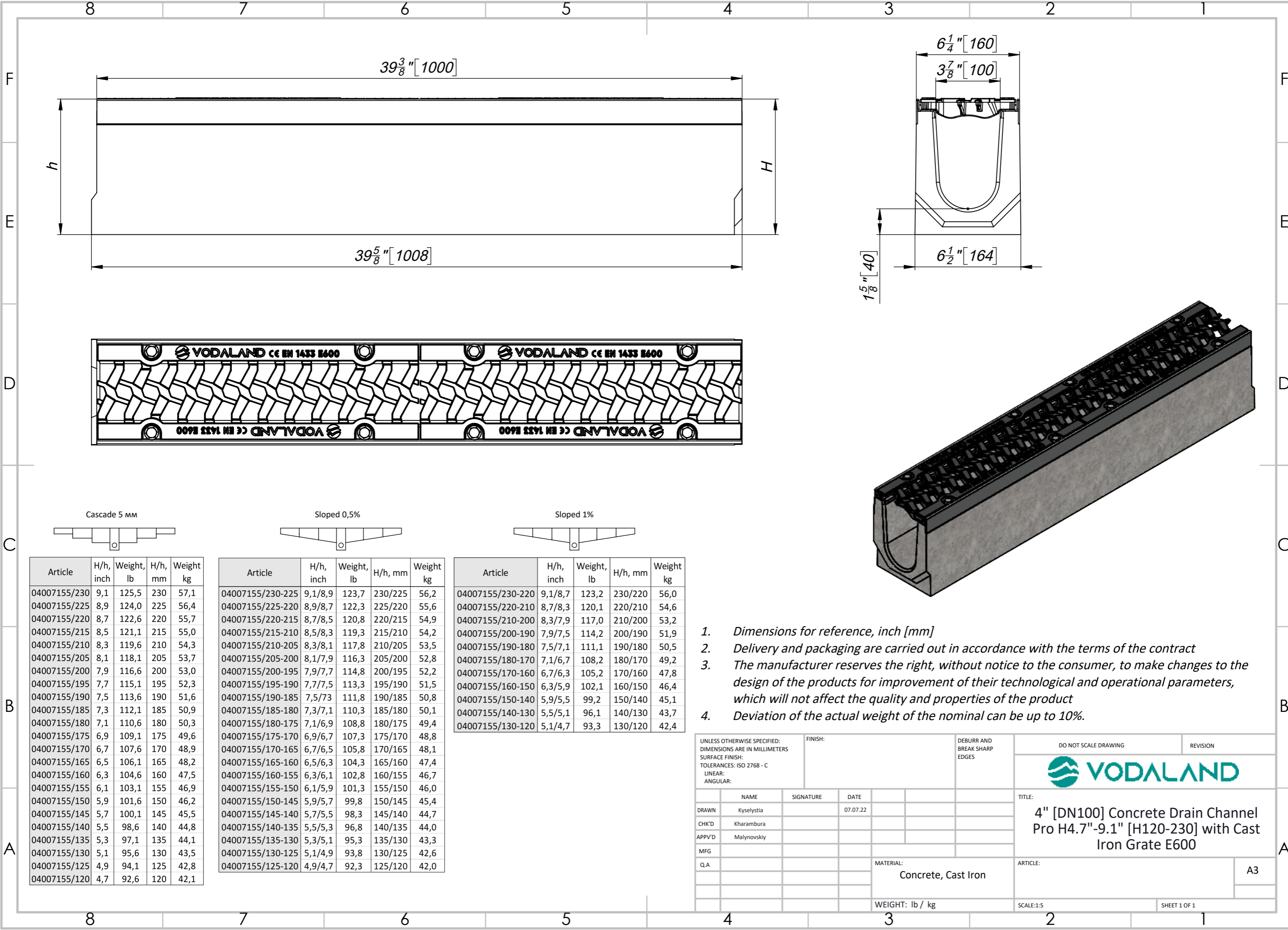
Article	H/h, inch	Weight, lb	H/h, mm	Weight, kg
040071334/230	9,1	118,0	230	53,6
040071334/225	8,9	116,5	225	52,9
040071334/220	8,7	115,0	220	52,3
040071334/215	8,5	113,5	215	51,6
040071334/210	8,3	112,0	210	50,9
040071334/205	8,1	110,5	205	50,2
040071334/200	7,9	109,0	200	49,5
040071334/195	7,7	107,5	195	48,9
040071334/190	7,5	106,0	190	48,2
040071334/185	7,3	104,5	185	47,5
040071334/180	7,1	103,0	180	46,8
040071334/175	6,9	101,5	175	46,1
040071334/170	6,7	100,0	170	45,5
040071334/165	6,5	98,5	165	44,8
040071334/160	6,3	97,0	160	44,1
040071334/155	6,1	95,5	155	43,4
040071334/150	5,9	94,0	150	42,7
040071334/145	5,7	92,5	145	42,1
040071334/140	5,5	91,0	140	41,4
040071334/135	5,3	89,5	135	40,7
040071334/130	5,1	88,0	130	40,0
040071334/125	4,9	86,5	125	39,3
040071334/120	4,7	85,0	120	38,6

Article	H/h, inch	Weight, lb	H/h, mm	Weight, kg
040071334/230-225	9,1/8,9	116,2	230/225	52,8
040071334/225-220	8,9/8,7	114,7	225/220	52,1
040071334/220-215	8,7/8,5	113,2	220/215	51,4
040071334/215-210	8,5/8,3	111,7	215/210	50,8
040071334/210-205	8,3/8,1	110,2	210/205	50,1
040071334/205-200	8,1/7,9	108,7	205/200	49,4
040071334/200-195	7,9/7,7	107,2	200/195	48,7
040071334/195-190	7,7/7,5	105,7	195/190	48,0
040071334/190-185	7,5/7,3	104,2	190/185	47,4
040071334/185-180	7,3/7,1	102,7	185/180	46,7
040071334/180-175	7,1/6,9	101,2	180/175	46,0
040071334/175-170	6,9/6,7	99,7	175/170	45,3
040071334/170-165	6,7/6,5	98,2	170/165	44,6
040071334/165-160	6,5/6,3	96,7	165/160	44,0
040071334/160-155	6,3/6,1	95,2	160/155	43,3
040071334/155-150	6,1/5,9	93,7	155/150	42,6
040071334/150-145	5,9/5,7	92,2	150/145	41,9
040071334/145-140	5,7/5,5	90,7	145/140	41,2
040071334/140-135	5,5/5,3	89,2	140/135	40,6
040071334/135-130	5,3/5,1	87,7	135/130	39,9
040071334/130-125	5,1/4,9	86,2	130/125	39,2
040071334/125-120	4,9/4,7	84,7	125/120	38,5

Article	H/h, inch	Weight, lb	H/h, mm	Weight, kg
040071334/230-220	9,1/8,7	115,3	230/220	52,4
040071334/220-210	8,7/8,3	112,3	220/210	51,0
040071334/210-200	8,3/7,9	109,3	210/200	49,7
040071334/200-190	7,9/7,5	106,3	200/190	48,3
040071334/190-180	7,5/7,1	103,3	190/180	47,0
040071334/180-170	7,1/6,7	100,3	180/170	45,6
040071334/170-160	6,7/6,3	97,3	170/160	44,2
040071334/160-150	6,3/5,9	94,3	160/150	42,9
040071334/150-140	5,9/5,5	91,3	150/140	41,5
040071334/140-130	5,5/5,1	88,3	140/130	40,2
040071334/130-120	5,1/4,7	85,3	130/120	38,8

1. Dimensions for reference, inch [mm]
2. Delivery and packaging are carried out in accordance with the terms of the contract
3. The manufacturer reserves the right, without notice to the consumer, to make changes to the design of the products for improvement of their technological and operational parameters, which will not affect the quality and properties of the product
4. Deviation of the actual weight of the nominal can be up to 10%.

UNLESS OTHERWISE SPECIFIED: DIMENSIONS ARE IN MILLIMETERS SURFACE FINISH: TOLERANCES: ISO 2768 - C LINEAR: ANGULAR:		FINISH:	DEBURR AND BREAK SHARP EDGES	DO NOT SCALE DRAWING	REVISION
DRAWN: Kyselytsia CHK'D: Kharambura APPV'D: Malynovskiy MFG: Q.A:			DATE: 22.07.22	 <b>TITLE:</b> 4" [DN100] Concrete Drain Channel Pro H4.7"-9.1" [H120-230] with Cast Iron Grate D400	
MATERIAL: Concrete, Cast Iron		WEIGHT: lb / kg	ARTICLE:		
				SCALE: 1:5	SHEET 1 OF 1




Article	H/h, inch	Weight, lb	H/h, mm	Weight kg
04007155/230	9,1	125,5	230	57,1
04007155/225	8,9	124,0	225	56,4
04007155/220	8,7	122,6	220	55,7
04007155/215	8,5	121,1	215	55,0
04007155/210	8,3	119,6	210	54,3
04007155/205	8,1	118,1	205	53,7
04007155/200	7,9	116,6	200	53,0
04007155/195	7,7	115,1	195	52,3
04007155/190	7,5	113,6	190	51,6
04007155/185	7,3	112,1	185	50,9
04007155/180	7,1	110,6	180	50,3
04007155/175	6,9	109,1	175	49,6
04007155/170	6,7	107,6	170	48,9
04007155/165	6,5	106,1	165	48,2
04007155/160	6,3	104,6	160	47,5
04007155/155	6,1	103,1	155	46,9
04007155/150	5,9	101,6	150	46,2
04007155/145	5,7	100,1	145	45,5
04007155/140	5,5	98,6	140	44,8
04007155/135	5,3	97,1	135	44,1
04007155/130	5,1	95,6	130	43,5
04007155/125	4,9	94,1	125	42,8
04007155/120	4,7	92,6	120	42,1

Article	H/h, inch	Weight, lb	H/h, mm	Weight kg
04007155/230-225	9,1/8,9	123,7	230/225	56,2
04007155/225-220	8,9/8,7	122,3	225/220	55,6
04007155/220-215	8,7/8,5	120,8	220/215	54,9
04007155/215-210	8,5/8,3	119,3	215/210	54,2
04007155/210-205	8,3/8,1	117,8	210/205	53,5
04007155/205-200	8,1/7,9	116,3	205/200	52,8
04007155/200-195	7,9/7,7	114,8	200/195	52,2
04007155/195-190	7,7/7,5	113,3	195/190	51,5
04007155/190-185	7,5/7,3	111,8	190/185	50,8
04007155/185-180	7,3/7,1	110,3	185/180	50,1
04007155/180-175	7,1/6,9	108,8	180/175	49,4
04007155/175-170	6,9/6,7	107,3	175/170	48,8
04007155/170-165	6,7/6,5	105,8	170/165	48,1
04007155/165-160	6,5/6,3	104,3	165/160	47,4
04007155/160-155	6,3/6,1	102,8	160/155	46,7
04007155/155-150	6,1/5,9	101,3	155/150	46,0
04007155/150-145	5,9/5,7	99,8	150/145	45,4
04007155/145-140	5,7/5,5	98,3	145/140	44,7
04007155/140-135	5,5/5,3	96,8	140/135	44,0
04007155/135-130	5,3/5,1	95,3	135/130	43,3
04007155/130-125	5,1/4,9	93,8	130/125	42,6
04007155/125-120	4,9/4,7	92,3	125/120	42,0

Article	H/h, inch	Weight, lb	H/h, mm	Weight kg
04007155/230-220	9,1/8,7	123,2	230/220	56,0
04007155/220-210	8,7/8,3	120,1	220/210	54,6
04007155/210-200	8,3/7,9	117,0	210/200	53,2
04007155/200-190	7,9/7,5	114,2	200/190	51,9
04007155/190-180	7,5/7,1	111,1	190/180	50,5
04007155/180-170	7,1/6,7	108,2	180/170	49,2
04007155/170-160	6,7/6,3	105,2	170/160	47,8
04007155/160-150	6,3/5,9	102,1	160/150	46,4
04007155/150-140	5,9/5,5	99,2	150/140	45,1
04007155/140-130	5,5/5,1	96,1	140/130	43,7
04007155/130-120	5,1/4,7	93,3	130/120	42,4

1. Dimensions for reference, inch [mm]
2. Delivery and packaging are carried out in accordance with the terms of the contract
3. The manufacturer reserves the right, without notice to the consumer, to make changes to the design of the products for improvement of their technological and operational parameters, which will not affect the quality and properties of the product
4. Deviation of the actual weight of the nominal can be up to 10%.

UNLESS OTHERWISE SPECIFIED: DIMENSIONS ARE IN MILLIMETERS SURFACE FINISH: TOLERANCES: ISO 2768 - C LINEAR: ANGULAR:		FINISH:	DEBURR AND BREAK SHARP EDGES	DO NOT SCALE DRAWING	REVISION
DRAWN: Kyselystia		SIGNATURE:	DATE: 07.07.22	 <b>TITLE:</b> 4" [DN100] Concrete Drain Channel Pro H4.7"-9.1" [H120-230] with Cast Iron Grate E600	
CHK'D: Kharambura					
APPV'D: Malynovskiy					
MFG:					
Q.A:		MATERIAL: Concrete, Cast Iron		ARTICLE:	A3
WEIGHT: lb / kg			SCALE: 1:5	SHEET 1 OF 1	