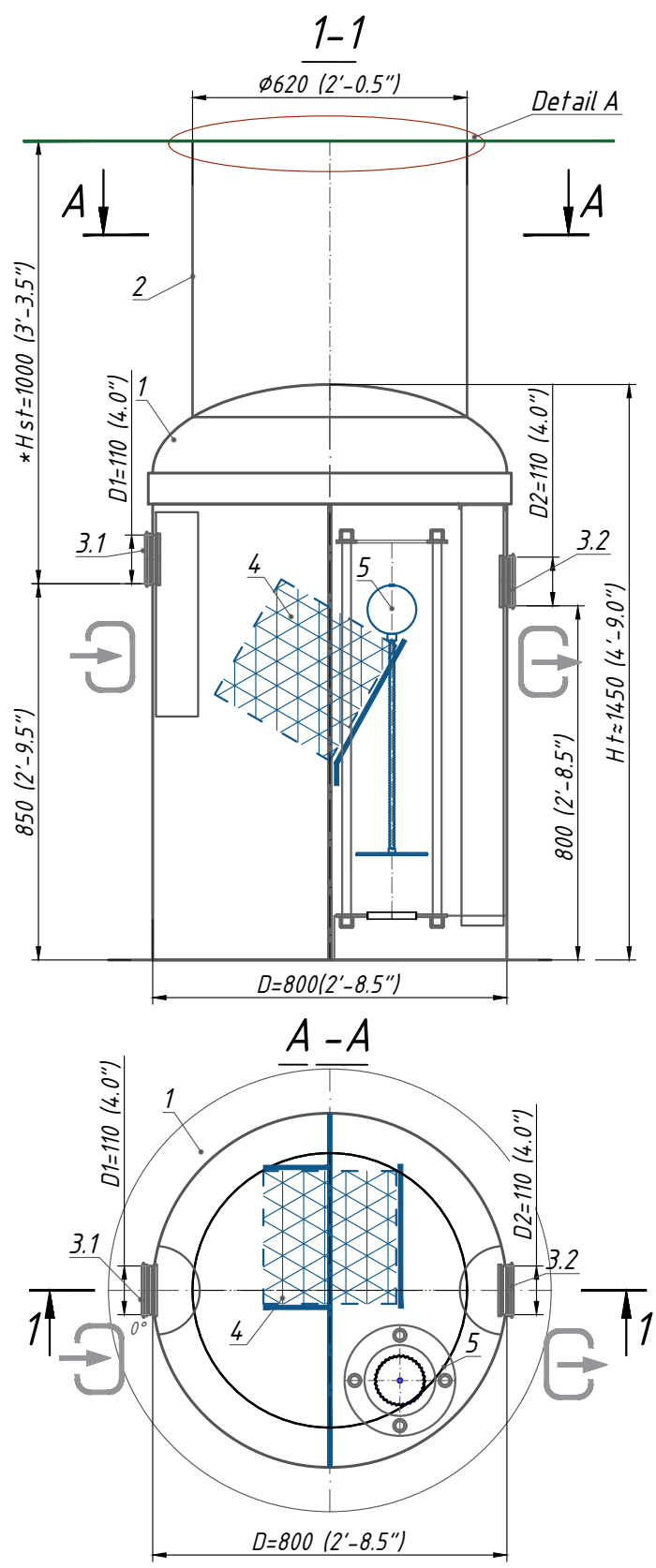


Oil and water Separator OilBase100 -1 (15) (S 1:16)

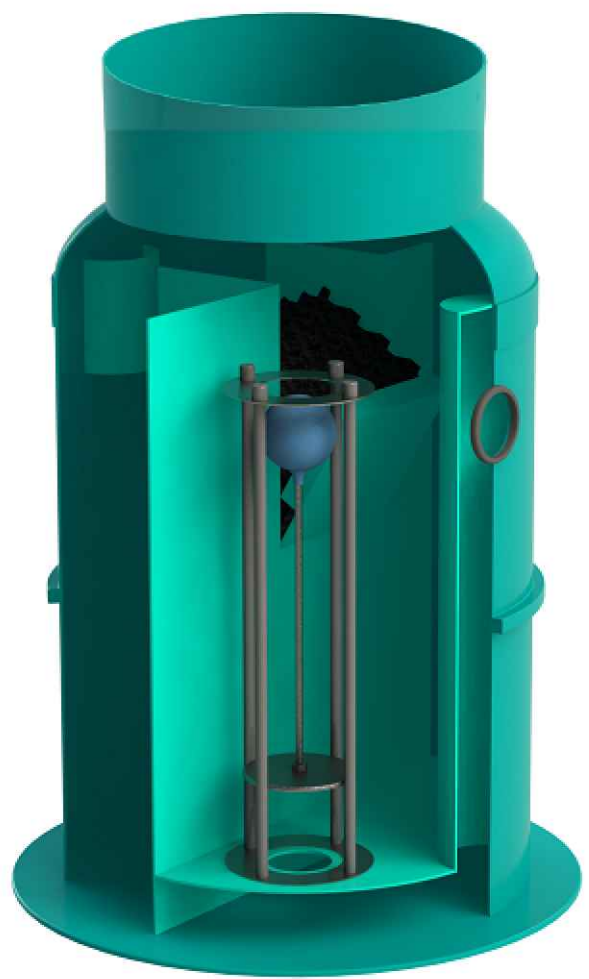


Specification of materials and equipment. Standard equipment ** (Tabl. 1)

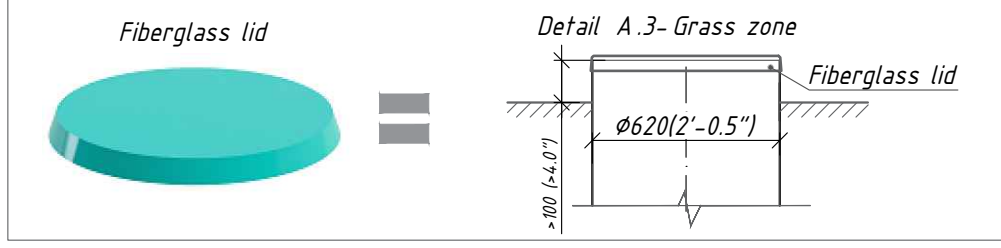
Pos.	Identification	Name	Q-ty	Mass pc.,kg	Note
1	Vodaland	Oil and water Separator Vodaland OilBase100 -1 (15), disch. 1l/s or 15 gpm, (0 gpm -ByPass) fiberglass, D= 800 (2'-8,5"), Ht≈1450 mm (4'-9.0")	1	70	compl.
2		Inspection manhole Ø620 (2'-0.5")	1		compl.
3.1,3.2	D1-Inlet / D2-Outlet	Rubber seal for connection Ø 110 (4.0")	2		compl.
4		Coalescent block	1		compl.
5		Automatic locking device D110 (4.0")	1		compl.
		Volume of light liquids	12.5		gal
		Volume of sludge trap	25		gal

**The product is shipped according to Standard Equipment (Tabl. 1), unless otherwise specified in the Additional Information

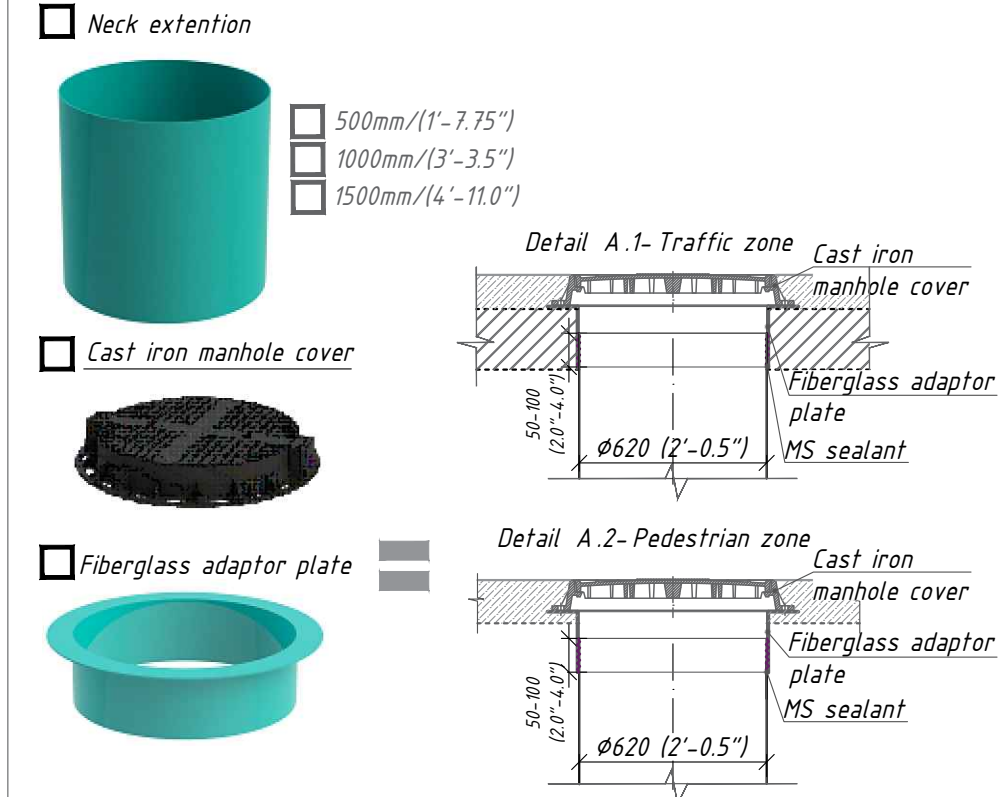
Oil and water Separator



Standard equipment



Additional equipment



Note:
 *H-depth of the inlet connection (in standard equipment H up to 1000 mm (3'-3.5")).
 **The product is shipped according to Standard Equipment (Tabl. 1), unless otherwise specified in the Additional Information.
 ***The manufacturer reserves the right to make design and schematic changes that do not impair the characteristics of the product as a whole.
 Engineering tolerance of deviation from base dimension is 1-3%.

Oil and water Separator
 OilBase100 -1 (15)
 Factory ID: OB1-1

Vodaland Canada Inc. 5900 Ambler Drive, Unit 1 & 2, Mississauga, ON L4W 2N3 +1 (905) 238 1771



Additional Information: