
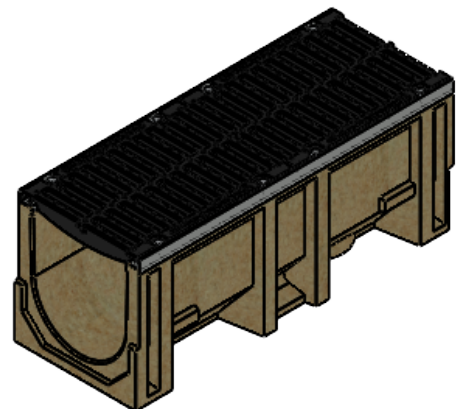
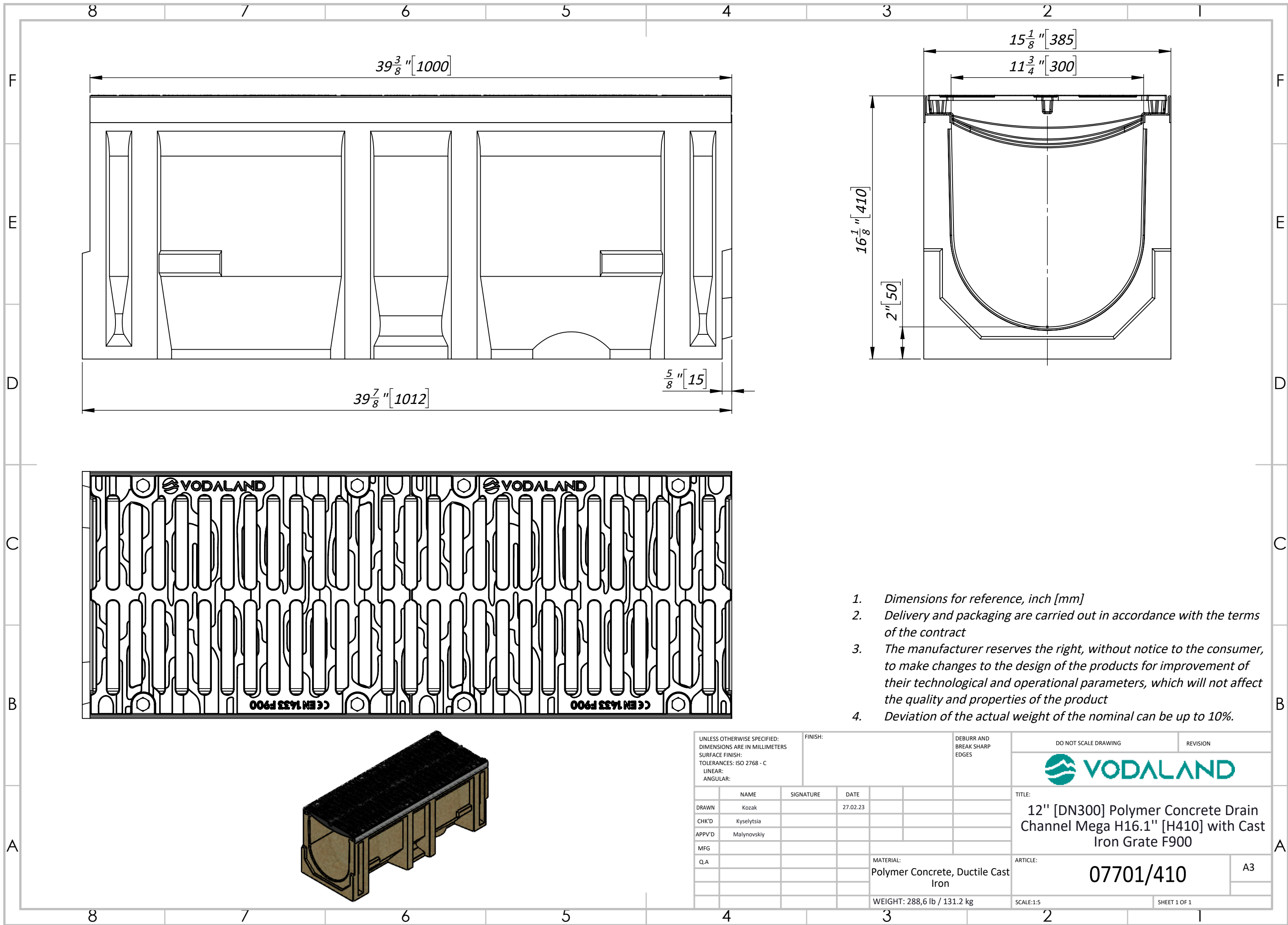


1. Dimensions for reference, inch [mm]
2. Delivery and packaging are carried out in accordance with the terms of the contract
3. The manufacturer reserves the right, without notice to the consumer, to make changes to the design of the products for improvement of their technological and operational parameters, which will not affect the quality and properties of the product
4. Deviation of the actual weight of the nominal can be up to 10%.

UNLESS OTHERWISE SPECIFIED: DIMENSIONS ARE IN MILLIMETERS SURFACE FINISH: TOLERANCES: ISO 2768 - C LINEAR: ANGULAR:		FINISH:	DEBURR AND BREAK SHARP EDGES	DO NOT SCALE DRAWING	REVISION
DRAWN: Kozak		SIGNATURE	DATE: 27.02.23	 TITLE: 12" [DN300] Polymer Concrete Drain Channel Mega H16.1" [H410] with Cast Iron Grate E600 ARTICLE: 07700/410	
CHK'D: Kyselytsia					
APPV'D: Malynovskiy					
MFG:					
Q.A:					
		MATERIAL: Polymer Concrete, Ductile Cast Iron		SCALE: 1:5	
		WEIGHT: 256,7 lb / 116.7 kg		SHEET 1 OF 1	





$39\frac{3}{8}$ " [1000]

$39\frac{7}{8}$ " [1012]

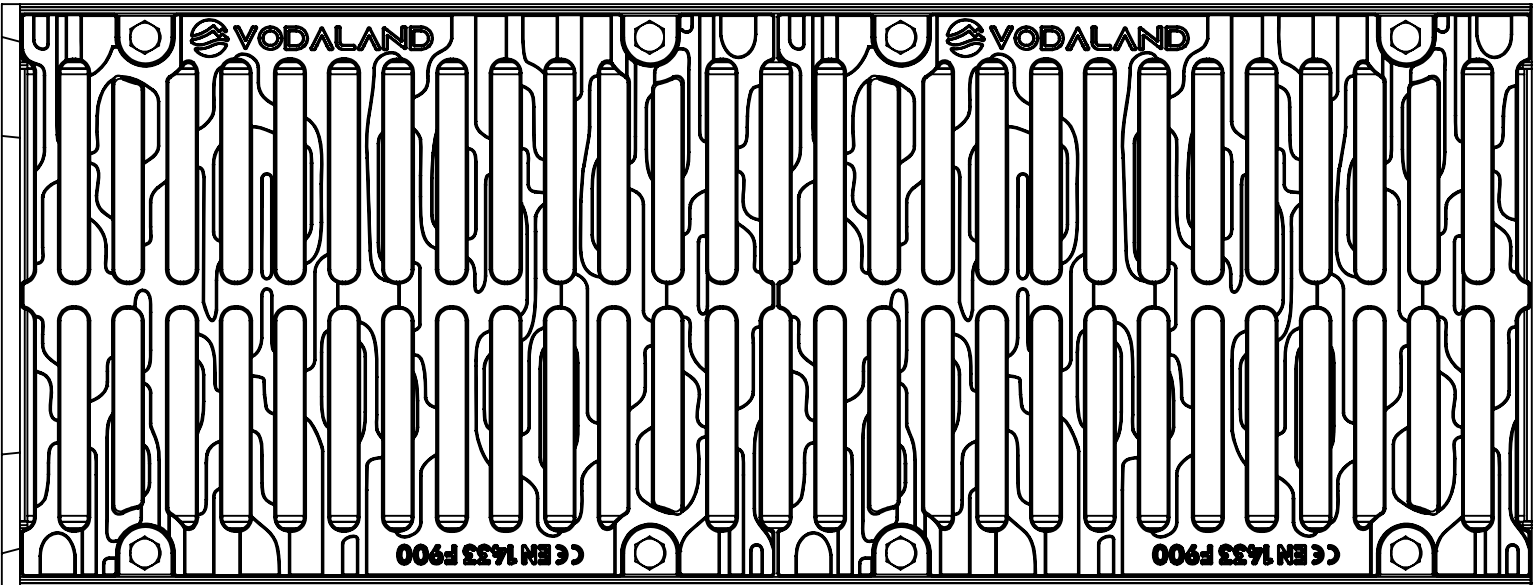
$\frac{5}{8}$ " [15]

$15\frac{1}{8}$ " [385]

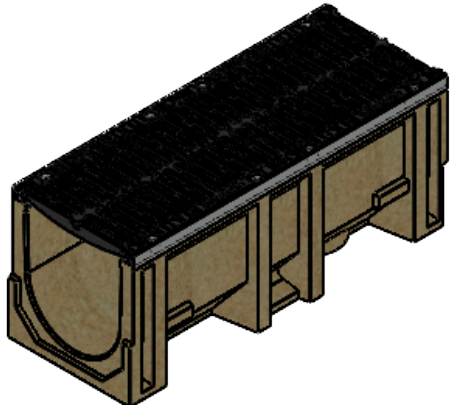
$11\frac{3}{4}$ " [300]

$16\frac{1}{8}$ " [410]

2" [50]



1. Dimensions for reference, inch [mm]
2. Delivery and packaging are carried out in accordance with the terms of the contract
3. The manufacturer reserves the right, without notice to the consumer, to make changes to the design of the products for improvement of their technological and operational parameters, which will not affect the quality and properties of the product
4. Deviation of the actual weight of the nominal can be up to 10%.



UNLESS OTHERWISE SPECIFIED: DIMENSIONS ARE IN MILLIMETERS SURFACE FINISH: TOLERANCES: ISO 2768 - C LINEAR: ANGULAR:			FINISH:	DEBURR AND BREAK SHARP EDGES	DO NOT SCALE DRAWING	REVISION
NAME	SIGNATURE	DATE	TITLE: 12" [DN300] Polymer Concrete Drain Channel Mega H16.1" [H410] with Cast Iron Grate F900			ARTICLE: 07701/410
DRAWN	Kozak	27.02.23	A3			
CHK'D	Kyselytsia		SCALE:1:5			
APPV'D	Malynovskiy		SHEET 1 OF 1			
MFG						
Q.A			MATERIAL: Polymer Concrete, Ductile Cast Iron	WEIGHT: 288,6 lb / 131.2 kg		