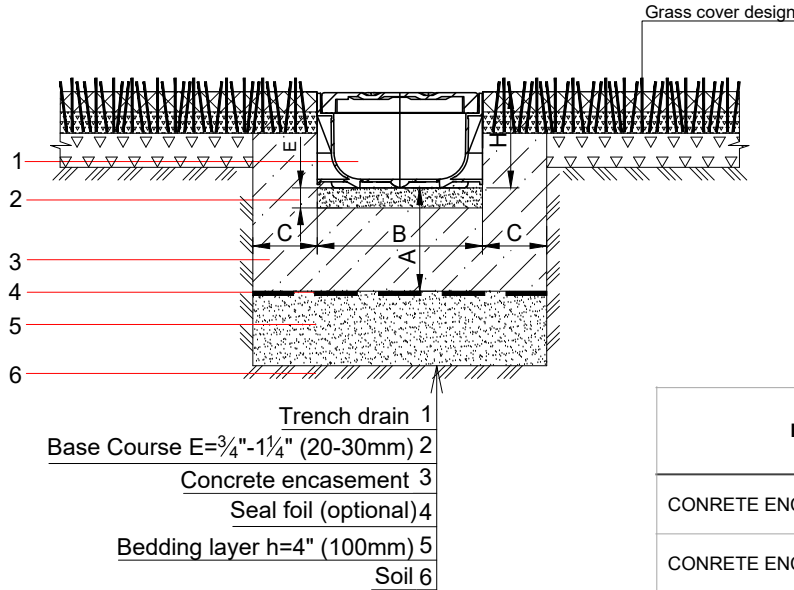


EASY 2 SYSTEM - LOAD CLASS A15
GRASS INSTALLATION

4" (100mm) EASY PLASTIC TRENCH DRAIN



| PARAMETER | LOAD CLASS |
|-----------------------------------|------------|
| | CLASS A |
| CONCRETE ENCASEMENT DEPTH (A), in | 4" (100mm) |
| CONCRETE ENCASEMENT WIDTH (B), in | 4" (100mm) |

NOTES:

1. SPECIFIER IS RESPONSIBLE FOR CONCRETE ENCASEMENT AND REINFORCING BASED UPON APPLICATION AND LOCAL CODES.
2. EXPANSION AND CONTRACTION CONTROL JOINTS AND REINFORCEMENT ARE RECOMMENDED TO PROTECT CHANNEL AND CONCRETE SURROUND. ENGINEERING ADVICE MAY BE REQUIRED.
3. THIS INSTALLATION SCHEME IS A RECOMMENDATION. CONSULT WITH THE MANUFACTURER FOR INSTALLATION INSTRUCTIONS.
4. THE FINISHED LEVEL OF CONCRETE SURROUND SHOULD BE 1/8" - 3/16" (3-5mm) ABOVE THE TOP OF THE CHANNEL EDGE.

GENERAL: THE TRENCH DRAIN SHALL BE VODALAND CANADA EASY 2 AS MANUFACTURED BY VODALAND OR APPROVED EQUAL.

SPECIFICATION: EASY 2 TRENCH DRAIN SHALL BE 39.4" (1000mm) LONG AND THE NOMINAL CLEAR OPENING SHALL BE 4" (100mm) WITH 4.9" (125mm) OVERALL WIDTH. CHANNELS SHALL BE MANUFACTURED FROM UV STABILIZED 100% RECYCLED POLYPROPYLENE. UNITS SHALL HAVE MALE-TO-FEMALE INTERLOCKING JOINTS THAT WILL NOT SEPARATE DURING THE INSTALLATION. CHANNELS SHALL HAVE A RADIUS SELF CLEANING BOTTOM WITH A MANNING'S COEFFICIENT OF 0.009 AND NEUTRAL 0% BUILT IN SLOPE. CHANNELS AND GRATE SHALL WITHSTAND EN1433 LOAD CLASS A15.

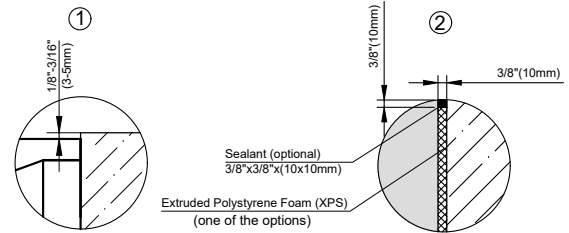
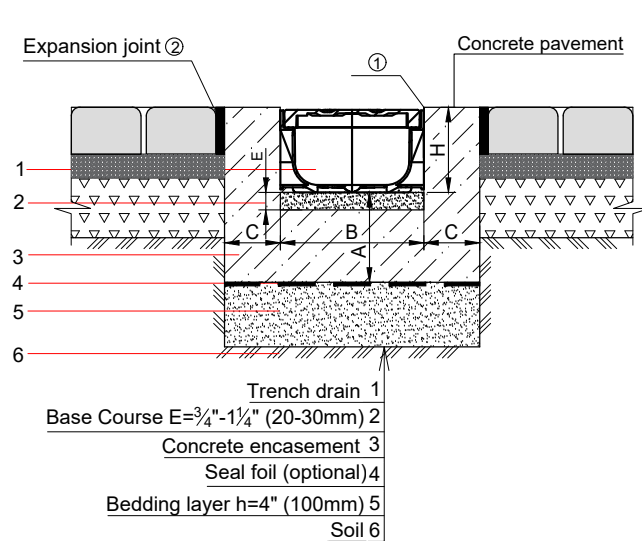
THE COMPLETE DRAINAGE SYSTEM SHALL BE BY VODALAND CANADA INC. ANY DEVIATION OR PARTIAL SYSTEM DESIGN AND/OR IMPROPER INSTALLATION WILL VOID ANY AND ALL WARRANTIES PROVIDED BY VODALAND CANADA INC.

CHECK AND SPECIFY APPROPRIATE OPTIONS:

- 6821 EASY 2 END CAP
- 682109 EASY 2 END CAP WITH OUTLET
- 6825 EASY 2 BOTTOM OUTLET NOZZLE
- 6828 EASY 2 CATCH BASIN ADAPTER

EASY 2 SYSTEM - LOAD CLASS A15
EXPOSED PAVER PAVEMENT INSTALLATION

4" (100mm) EASY PLASTIC TRENCH DRAIN



| PARAMETER | LOAD CLASS |
|-----------------------------------|------------|
| | CLASS A |
| CONCRETE ENCASEMENT DEPTH (A), in | 4" (100mm) |
| CONCRETE ENCASEMENT WIDTH (B), in | 4" (100mm) |

NOTES:

1. SPECIFIER IS RESPONSIBLE FOR CONCRETE ENCASEMENT AND REINFORCING BASED UPON APPLICATION AND LOCAL CODES.
2. EXPANSION AND CONTRACTION CONTROL JOINTS AND REINFORCEMENT ARE RECOMMENDED TO PROTECT CHANNEL AND CONCRETE SURROUND. ENGINEERING ADVICE MAY BE REQUIRED.
3. THIS INSTALLATION SCHEME IS A RECOMMENDATION. CONSULT WITH THE MANUFACTURER FOR INSTALLATION INSTRUCTIONS.
4. THE FINISHED LEVEL OF CONCRETE SURROUND SHOULD BE 1/8" - 3/16" (3-5mm) ABOVE THE TOP OF THE CHANNEL EDGE.

GENERAL: THE TRENCH DRAIN SHALL BE VODALAND CANADA EASY 2 AS MANUFACTURED BY VODALAND OR APPROVED EQUAL.

SPECIFICATION: EASY 2 TRENCH DRAIN SHALL BE 39.4" (1000mm) LONG AND THE NOMINAL CLEAR OPENING SHALL BE 4" (100mm) WITH 4.9" (125mm) OVERALL WIDTH. CHANNELS SHALL BE MANUFACTURED FROM UV STABILIZED 100% RECYCLED POLYPROPYLENE. UNITS SHALL HAVE MALE-TO-FEMALE INTERLOCKING JOINTS THAT WILL NOT SEPARATE DURING THE INSTALLATION. CHANNELS SHALL HAVE A RADIUS SELF CLEANING BOTTOM WITH A MANNING'S COEFFICIENT OF 0.009 AND NEUTRAL 0% BUILT IN SLOPE. CHANNELS AND GRATE SHALL WITHSTAND EN1433 LOAD CLASS A15.

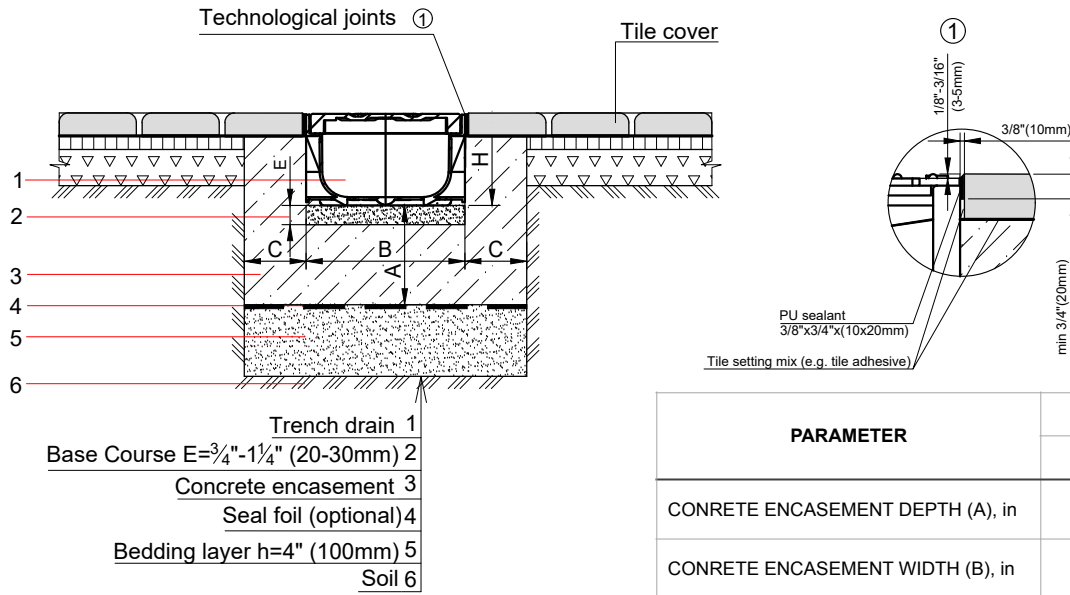
THE COMPLETE DRAINAGE SYSTEM SHALL BE BY VODALAND CANADA INC. ANY DEVIATION OR PARTIAL SYSTEM DESIGN AND/OR IMPROPER INSTALLATION WILL VOID ANY AND ALL WARRANTIES PROVIDED BY VODALAND CANADA INC.

CHECK AND SPECIFY APPROPRIATE OPTIONS:

- ___ 6821 EASY 2 END CAP
- ___ 682109 EASY 2 END CAP WITH OUTLET
- ___ 6825 EASY 2 BOTTOM OUTLET NOZZLE
- ___ 6828 EASY 2 CATCH BASIN ADAPTER

EASY 2 SYSTEM - LOAD CLASS A15
ENCLOSED PAVER PAVEMENT INSTALLATION

4" (100mm) EASY PLASTIC TRENCH DRAIN



| PARAMETER | LOAD CLASS |
|-----------------------------------|------------|
| | CLASS A |
| CONCRETE ENCASEMENT DEPTH (A), in | 4" (100mm) |
| CONCRETE ENCASEMENT WIDTH (B), in | 4" (100mm) |

NOTES:

- SPECIFIER IS RESPONSIBLE FOR CONCRETE ENCASEMENT AND REINFORCING BASED UPON APPLICATION AND LOCAL CODES.
- EXPANSION AND CONTRACTION CONTROL JOINTS AND REINFORCEMENT ARE RECOMMENDED TO PROTECT CHANNEL AND CONCRETE SURROUND. ENGINEERING ADVICE MAY BE REQUIRED.
- THIS INSTALLATION SCHEME IS A RECOMMENDATION. CONSULT WITH THE MANUFACTURER FOR INSTALLATION INSTRUCTIONS.
- THE FINISHED LEVEL OF CONCRETE SURROUND SHOULD BE 1/8" - 3/16" (3-5mm) ABOVE THE TOP OF THE CHANNEL EDGE.

GENERAL: THE TRENCH DRAIN SHALL BE VODALAND CANADA EASY 2 AS MANUFACTURED BY VODALAND OR APPROVED EQUAL.

SPECIFICATION: EASY 2 TRENCH DRAIN SHALL BE 39.4" (1000mm) LONG AND THE NOMINAL CLEAR OPENING SHALL BE 4" (100mm) WITH 4.9" (125mm) OVERALL WIDTH. CHANNELS SHALL BE MANUFACTURED FROM UV STABILIZED 100% RECYCLED POLYPROPYLENE. UNITS SHALL HAVE MALE-TO-FEMALE INTERLOCKING JOINTS THAT WILL NOT SEPARATE DURING THE INSTALLATION. CHANNELS SHALL HAVE A RADIUS SELF CLEANING BOTTOM WITH A MANNING'S COEFFICIENT OF 0.009 AND NEUTRAL 0% BUILT IN SLOPE. CHANNELS AND GRATE SHALL WITHSTAND EN1433 LOAD CLASS A15.

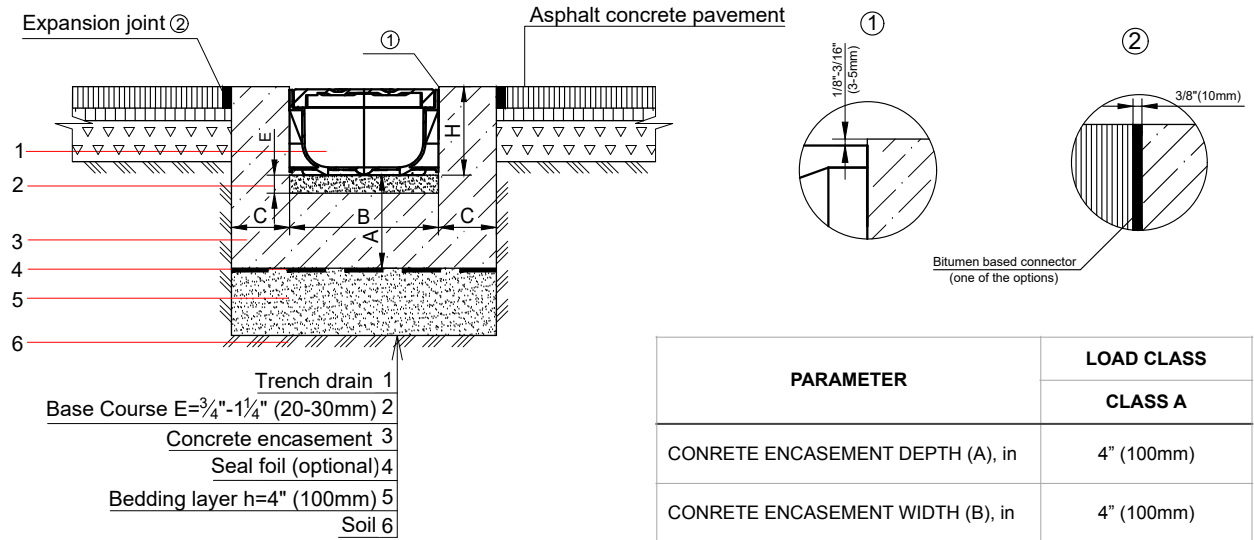
THE COMPLETE DRAINAGE SYSTEM SHALL BE BY VODALAND CANADA INC. ANY DEVIATION OR PARTIAL SYSTEM DESIGN AND/OR IMPROPER INSTALLATION WILL VOID ANY AND ALL WARRANTIES PROVIDED BY VODALAND CANADA INC.

CHECK AND SPECIFY APPROPRIATE OPTIONS:

- ___ 6821 EASY 2 END CAP
- ___ 682109 EASY 2 END CAP WITH OUTLET
- ___ 6825 EASY 2 BOTTOM OUTLET NOZZLE
- ___ 6828 EASY 2 CATCH BASIN ADAPTER

EASY 2 SYSTEM - LOAD CLASS A15
EXPOSED ASPHALT PAVEMENT INSTALLATION

4" (100mm) EASY PLASTIC TRENCH DRAIN



NOTES:

- SPECIFIER IS RESPONSIBLE FOR CONCRETE ENCASEMENT AND REINFORCING BASED UPON APPLICATION AND LOCAL CODES.
- EXPANSION AND CONTRACTION CONTROL JOINTS AND REINFORCEMENT ARE RECOMMENDED TO PROTECT CHANNEL AND CONCRETE SURROUND. ENGINEERING ADVICE MAY BE REQUIRED.
- THIS INSTALLATION SCHEME IS A RECOMMENDATION. CONSULT WITH THE MANUFACTURER FOR INSTALLATION INSTRUCTIONS.
- THE FINISHED LEVEL OF CONCRETE SURROUND SHOULD BE 1/8" - 3/16" (3-5mm) ABOVE THE TOP OF THE CHANNEL EDGE.

GENERAL: THE TRENCH DRAIN SHALL BE VODALAND CANADA EASY 2 AS MANUFACTURED BY VODALAND OR APPROVED EQUAL.

SPECIFICATION: EASY 2 TRENCH DRAIN SHALL BE 39.4" (1000mm) LONG AND THE NOMINAL CLEAR OPENING SHALL BE 4" (100mm) WITH 4.9" (125mm) OVERALL WIDTH. CHANNELS SHALL BE MANUFACTURED FROM UV STABILIZED 100% RECYCLED POLYPROPYLENE. UNITS SHALL HAVE MALE-TO-FEMALE INTERLOCKING JOINTS THAT WILL NOT SEPARATE DURING THE INSTALLATION. CHANNELS SHALL HAVE A RADIUS SELF CLEANING BOTTOM WITH A MANNING'S COEFFICIENT OF 0.009 AND NEUTRAL 0% BUILT IN SLOPE. CHANNELS AND GRATE SHALL WITHSTAND EN1433 LOAD CLASS A15.

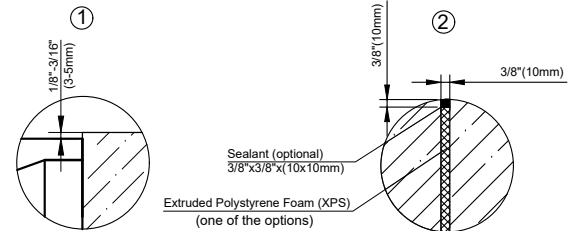
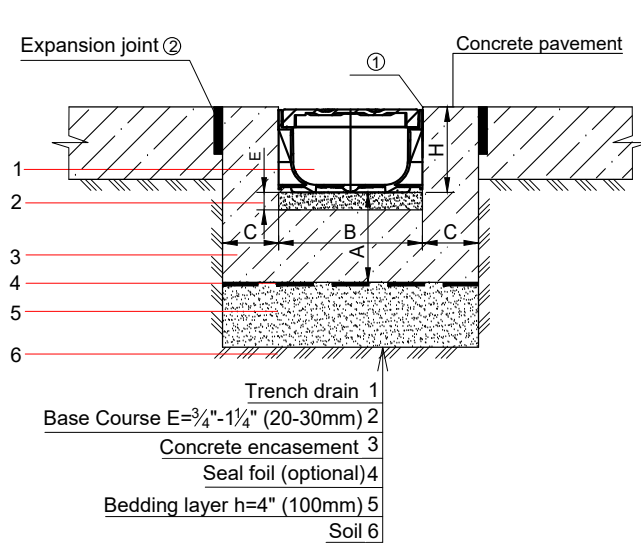
THE COMPLETE DRAINAGE SYSTEM SHALL BE BY VODALAND CANADA INC. ANY DEVIATION OR PARTIAL SYSTEM DESIGN AND/OR IMPROPER INSTALLATION WILL VOID ANY AND ALL WARRANTIES PROVIDED BY VODALAND CANADA INC.

CHECK AND SPECIFY APPROPRIATE OPTIONS:

- ___ 6821 EASY 2 END CAP
- ___ 682109 EASY 2 END CAP WITH OUTLET
- ___ 6825 EASY 2 BOTTOM OUTLET NOZZLE
- ___ 6828 EASY 2 CATCH BASIN ADAPTER

EASY 2 SYSTEM - LOAD CLASS A15
EXPOSED CONCRETE PAVEMENT INSTALLATION

4" (100mm) EASY PLASTIC TRENCH DRAIN



| PARAMETER | LOAD CLASS |
|-----------------------------------|------------|
| | CLASS A |
| CONCRETE ENCASEMENT DEPTH (A), in | 4" (100mm) |
| CONCRETE ENCASEMENT WIDTH (B), in | 4" (100mm) |

NOTES:

- SPECIFIER IS RESPONSIBLE FOR CONCRETE ENCASEMENT AND REINFORCING BASED UPON APPLICATION AND LOCAL CODES.
- EXPANSION AND CONTRACTION CONTROL JOINTS AND REINFORCEMENT ARE RECOMMENDED TO PROTECT CHANNEL AND CONCRETE SURROUND. ENGINEERING ADVICE MAY BE REQUIRED.
- THIS INSTALLATION SCHEME IS A RECOMMENDATION. CONSULT WITH THE MANUFACTURER FOR INSTALLATION INSTRUCTIONS.
- THE FINISHED LEVEL OF CONCRETE SURROUND SHOULD BE 1/8" - 3/16" (3-5mm) ABOVE THE TOP OF THE CHANNEL EDGE.

GENERAL: THE TRENCH DRAIN SHALL BE VODALAND CANADA EASY 2 AS MANUFACTURED BY VODALAND OR APPROVED EQUAL.

SPECIFICATION: EASY 2 TRENCH DRAIN SHALL BE 39.4" (1000mm) LONG AND THE NOMINAL CLEAR OPENING SHALL BE 4" (100mm) WITH 4.9" (125mm) OVERALL WIDTH. CHANNELS SHALL BE MANUFACTURED FROM UV STABILIZED 100% RECYCLED POLYPROPYLENE. UNITS SHALL HAVE MALE-TO-FEMALE INTERLOCKING JOINTS THAT WILL NOT SEPARATE DURING THE INSTALLATION. CHANNELS SHALL HAVE A RADIUS SELF CLEANING BOTTOM WITH A MANNING'S COEFFICIENT OF 0.009 AND NEUTRAL 0% BUILT IN SLOPE. CHANNELS AND GRATE SHALL WITHSTAND EN1433 LOAD CLASS A15.

THE COMPLETE DRAINAGE SYSTEM SHALL BE BY VODALAND CANADA INC. ANY DEVIATION OR PARTIAL SYSTEM DESIGN AND/OR IMPROPER INSTALLATION WILL VOID ANY AND ALL WARRANTIES PROVIDED BY VODALAND CANADA INC.

CHECK AND SPECIFY APPROPRIATE OPTIONS:

- 6821 EASY 2 END CAP
- 682109 EASY 2 END CAP WITH OUTLET
- 6825 EASY 2 BOTTOM OUTLET NOZZLE
- 6828 EASY 2 CATCH BASIN ADAPTER