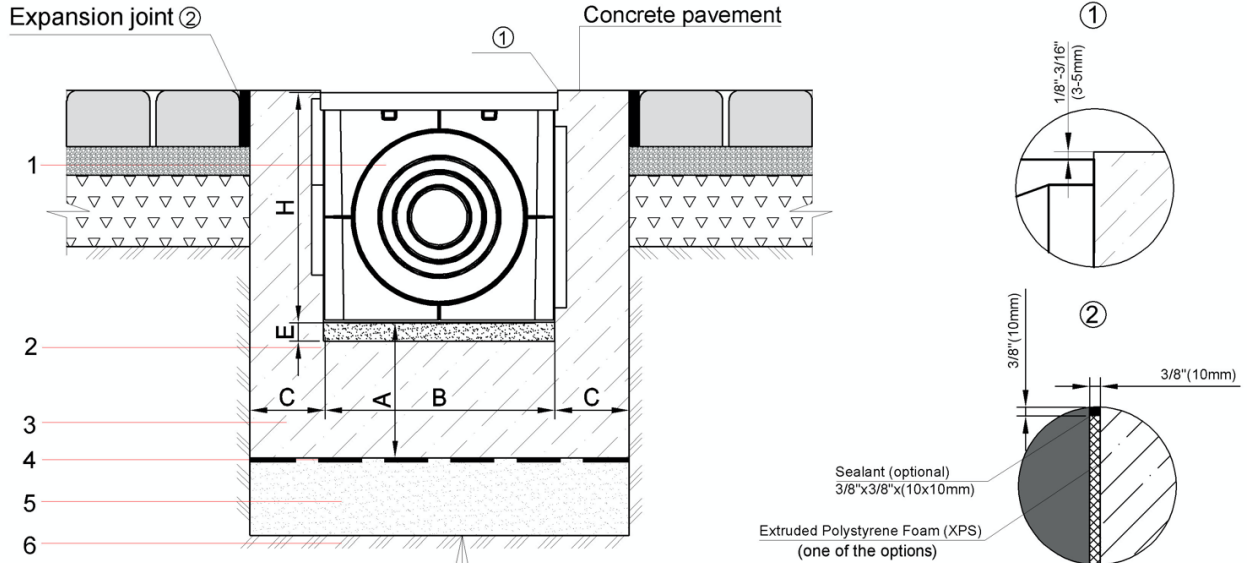


BASE 400-CBP CATCH BASIN - LOAD CLASS A15 - C250
ENCLOSED PAVER PAVEMENT INSTALLATION

16" (400mm) BASE PLASTIC CATCH BASIN



- Catch Basin 1
- Base Course E=3/4"-1 1/4" (20-30mm) 2
- Concrete encasement 3
- Seal foil (optional) 4
- Bedding layer h=4" (100mm) 5
- Soil 6

Parameter	Load class		
	Class A	Class B	Class C
Concrete encasement depth (A), in (mm)	4"(100mm)	4"(100mm)	6"(150mm)
Concrete encasement width (C), in (mm)	4"(100mm)	4"(100mm)	6"(150mm)

NOTES:

1. SPECIFIER IS RESPONSIBLE FOR CONCRETE ENCASUREMENT AND REINFORCING BASED UPON APPLICATION AND LOCAL CODES.
2. EXPANSION AND CONTRACTION CONTROL JOINTS AND REINFORCEMENT ARE RECOMMENDED TO PROTECT CHANNEL AND CONCRETE SURROUND. ENGINEERING ADVICE MAY BE REQUIRED.
3. THIS INSTALLATION SCHEME IS A RECOMMENDATION. CONSULT WITH THE MANUFACTURER FOR INSTALLATION INSTRUCTIONS.
4. THE FINISHED LEVEL OF CONCRETE SURROUND SHOULD BE 1/8" - 3/16" (3-5mm) ABOVE THE TOP OF THE CHANNEL EDGE.

GENERAL: THE CATCH BASIN SHALL BE VODALAND CANADA BASE 400-CBP AS MANUFACTURED BY VODALAND OR APPROVED EQUAL.

CATCH BASIN: BASE 400-CBP CATCH BASIN SHALL BE 16.0" (420MM) DEEP AND 15.7" (400MM) WIDE. CATCH BASINS SHALL BE MANUFACTURED FROM UV STABILIZED 100% RECYCLED POLYPROPYLENE. UNITS SHALL HAVE FOUR OUTLET SIZES ON EACH SIDE. CATCH BASINS SHALL BE EQUIPPED WITH A SPECIFIED GRATE TO WITHSTAND A REQUIRED EN1433 LOAD CLASS AND DEBRIS BASKET MADE OF GALVANIZED STEEL.

THE COMPLETE DRAINAGE SYSTEM SHALL BE BY VODALAND. ANY DEVIATION OR PARTIAL SYSTEM DESIGN AND/OR IMPROPER INSTALLATION WILL VOID ANY AND ALL WARRANTIES PROVIDED BY VODALAND.

BASE 400-CBP CATCH BASIN - LOAD CLASS A15 - C250

ENCLOSED PAVER PAVEMENT INSTALLATION

16" (400mm) BASE PLASTIC CATCH BASIN**CHECK AND SPECIFY APPROPRIATE GRATE:**

	Name	Article	H, in	H, mm	W, in	W, mm	Load Class
	Plastic Grate	3480	1.0	33	15.4	389	A15
	Plastic Cover	3489	1.0	33	16	389	A15
	Galvanized Steel Grate (mesh)	3420	1.0	26	15.4	391	A15
	Stainless Steel Grate (ADA/Heel Proof)	345018	0.9	24	15.4	390	A15
	Ductile Cast Iron grate (mesh)	34403	2.6	66	15.4	390	C250
	Steel Basket	6189	7.3	186	13.0	330	-