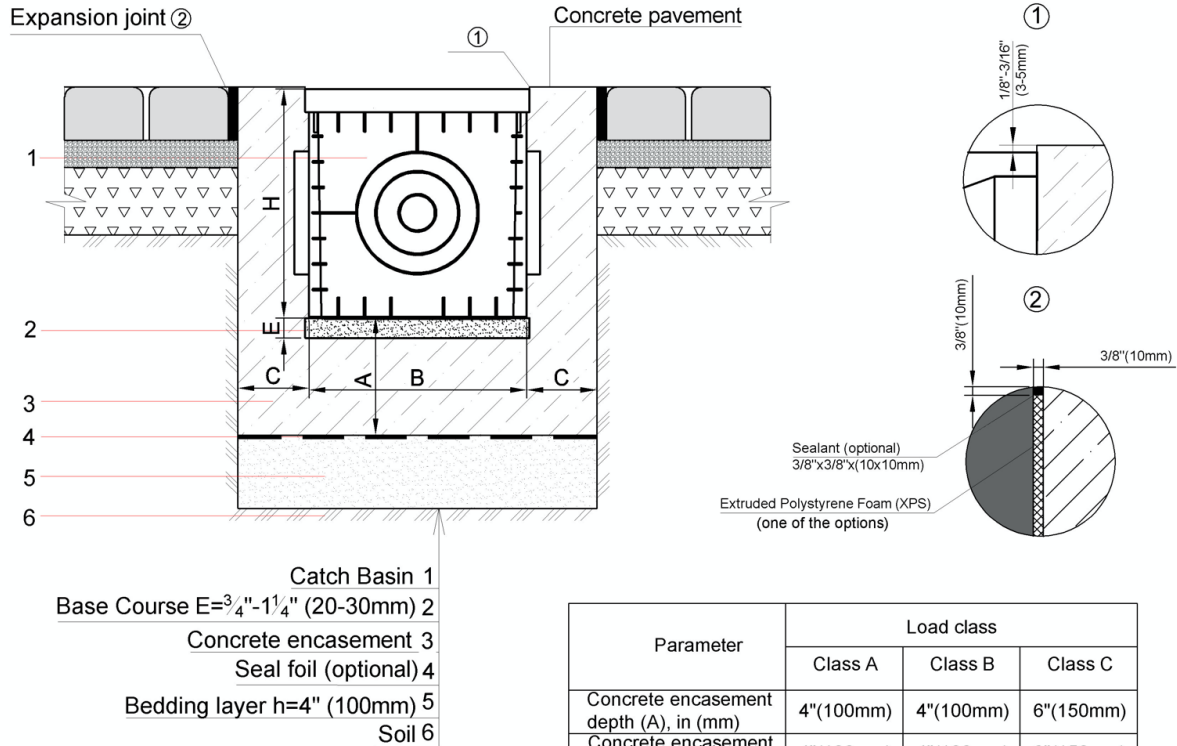


**BASE 300-CBP CATCH BASIN - LOAD CLASS A15 - C250**  
**ENCLOSED PAVER PAVEMENT INSTALLATION**

**12" (300mm) BASE PLASTIC CATCH BASIN**



**NOTES:**

1. SPECIFIER IS RESPONSIBLE FOR CONCRETE ENCASUREMENT AND REINFORCING BASED UPON APPLICATION AND LOCAL CODES.
2. EXPANSION AND CONTRACTION CONTROL JOINTS AND REINFORCEMENT ARE RECOMMENDED TO PROTECT CHANNEL AND CONCRETE SURROUND. ENGINEERING ADVICE MAY BE REQUIRED.
3. THIS INSTALLATION SCHEME IS A RECOMMENDATION. CONSULT WITH THE MANUFACTURER FOR INSTALLATION INSTRUCTIONS.
4. THE FINISHED LEVEL OF CONCRETE SURROUND SHOULD BE 1/8" - 3/16" (3-5mm) ABOVE THE TOP OF THE CHANNEL EDGE.

**GENERAL:** THE CATCH BASIN SHALL BE VODALAND CANADA BASE 300-CBP AS MANUFACTURED BY VODALAND OR APPROVED EQUAL.

**CATCH BASIN:** BASE 300-CBP CATCH BASIN SHALL BE 11.6" (300MM) DEEP AND 11.3" (290MM) WIDE. CATCH BASINS SHALL BE MANUFACTURED FROM UV STABILIZED 100% RECYCLED POLYPROPYLENE. UNITS SHALL HAVE FOUR OUTLET SIZES ON EACH SIDE. CATCH BASINS SHALL BE EQUIPPED WITH A SPECIFIED GRATE TO WITHSTAND A REQUIRED EN1433 LOAD CLASS AND DEBRIS BASKET.

THE COMPLETE DRAINAGE SYSTEM SHALL BE BY VODALAND. ANY DEVIATION OR PARTIAL SYSTEM DESIGN AND/OR IMPROPER INSTALLATION WILL VOID ANY AND ALL WARRANTIES PROVIDED BY VODALAND.

---

**BASE 300-CBP CATCH BASIN - LOAD CLASS A15 - C250**

ENCLOSED PAVER PAVEMENT INSTALLATION

**12" (300mm) BASE PLASTIC CATCH BASIN**
**CHECK AND SPECIFY APPROPRIATE OPTION OF THE GRATE:**

	Name	Article	H, in	H, mm	W, in	W, mm	Load Class
	Catch basin extension 4" (100 mm)	8370-E	4.7	120	11.4	290	-
	Plastic Cover (black)	3389	1.2	20	11.0	280	A15
	Plastic Cover (gray)	3389-GY	1.2	20	11.0	280	A15
	Plastic Grate (black)	3380	1.2	20	11.0	280	A15
	Plastic Grate (gray)	3380-GY	1.2	20	11.0	280	A15
	Galvanized Steel grate (mesh)	3320	1.0	26	11.0	280	A15
	Stainless steel (ADA/Hell Proof)	335018	0.8	21	11.0	280	B125
	Ductile cast iron grate (snow flake)	3334	0.9	22	10.9	278	B125
	Ductile cast iron grate (slotted)	3330	1.0	26	11.0	280	B125
	Downspout Guard	8370.9DSG	8	200	11.1	282	-