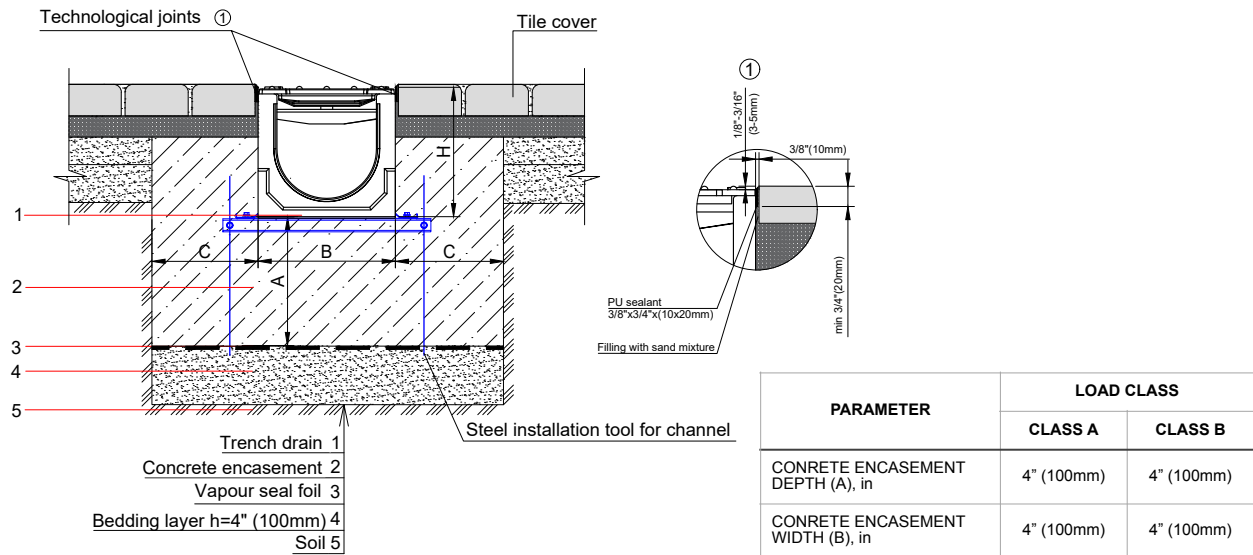


BASE 200PC SYSTEM - LOAD CLASS A15-B125

ENCLOSED PAVER PAVEMENT INSTALLATION

8" (200mm) BASE POLYMER CONCRETE TRENCH DRAIN



NOTES:

1. SPECIFIER IS RESPONSIBLE FOR CONCRETE ENCASEMENT AND REINFORCING BASED UPON APPLICATION AND LOCAL CODES.
2. EXPANSION AND CONTRACTION CONTROL JOINTS AND REINFORCEMENT ARE RECOMMENDED TO PROTECT CHANNEL AND CONCRETE SURROUND. ENGINEERING ADVICE MAY BE REQUIRED.
3. THIS INSTALLATION SCHEME IS A RECOMMENDATION. CONSULT WITH THE MANUFACTURER FOR INSTALLATION INSTRUCTIONS.
4. IF TRENCH DRAIN SYSTEM HAS A VERTICAL OUTLET AT THE END OF THE RUN, IT IS NECESSARY TO ADD AN ADDITIONAL 4" (100mm) OF CONCRETE ENCASEMENT AFTER THE END CAP.
5. THE FINISHED LEVEL OF CONCRETE SURROUND SHOULD BE 1/8" - 3/16" (3-5mm) ABOVE THE TOP OF THE CHANNEL EDGE.

GENERAL: THE TRENCH DRAIN SHALL BE VODALAND CANADA BASE 200PC AS MANUFACTURED BY VODALAND OR APPROVED EQUAL.

SPECIFICATION: CHANNELS SHALL BE 39.4" (1000mm) LONG AND THE NOMINAL CLEAR OPENING SHALL BE 8" (200mm) WITH 9.4" (238mm) OVERALL WIDTH AND BUILT IN SLOPE OF 0.5% OR NEUTRAL 0% AS PER SPECIFIER'S REQUIREMENTS. CHANNELS SHALL HAVE MALE-TO-FEMALE INTERLOCKING JOINTS. CHANNELS CAN BE EQUIPPED WITH STEEL EDGE RAILS IF REQUIRED. GRATINGS SHALL MEET THE SYSTEM LOAD CLASS SPECIFIED. CHANNELS AND GRATE SHALL WITHSTAND A REQUIRED EN1433 LOAD CLASS.

MATERIALS: BASE 200PC TRENCH DRAIN SHALL BE MANUFACTURED FROM POLYMER CONCRETE WITH THE FOLLOWING APPROXIMATE PROPERTIES:

COMPRESSIVE STRENGTH	14,000 PSI
FLEXURAL STRENGTH	4,000 PSI
TENSILE STRENGTH	1,500 PSI
WATER ABSORPTION:	0.05%
FROST PROOF:	YES
DILUTE ACID AND ALKALI RESISTANT:	YES
SALT PROOF:	YES

THE COMPLETE DRAINAGE SYSTEM SHALL BE BY VODALAND CANADA INC. ANY DEVIATION OR PARTIAL SYSTEM DESIGN AND/OR IMPROPER INSTALLATION WILL VOID ANY AND ALL WARRANTIES PROVIDED BY VODALAND CANADA INC.

REVISED: 2023

Vodaland Canada Inc.

1-5900 Ambler Dr, Mississauga, ON L4W 2N3 • Phone: 905-238-1771 • Email: info@vodaland.ca

BASE 200PC SYSTEM - LOAD CLASS A15-B125

ENCLOSED PAVER PAVEMENT INSTALLATION

8" (200mm) BASE POLYMER CONCRETE TRENCH DRAIN**CHECK AND SPECIFY APPROPRIATE OPTIONS:****GRATE OPTIONS:**

<input type="checkbox"/> 25101	GALVANIZED STEEL GRATE SLOTTED	A15
<input type="checkbox"/> 25901	STAINLESS STEEL GRATE SLOTTED	A15
<input type="checkbox"/> 252018	GALVANIZED STEEL GRATE ADA	A15
<input type="checkbox"/> 255018	STAINLESS STEEL GRATE ADA	A15
<input type="checkbox"/> 25303	DUCTILE CAST IRON GRATE SLOTTED	C250
<input type="checkbox"/> 25403	DUCTILE CAST IRON GRATE MESH	C250
<input type="checkbox"/> 25403-ADA	DUCTILE CAST IRON GRATE ADA	C250

ADDITIONAL OPTIONS:

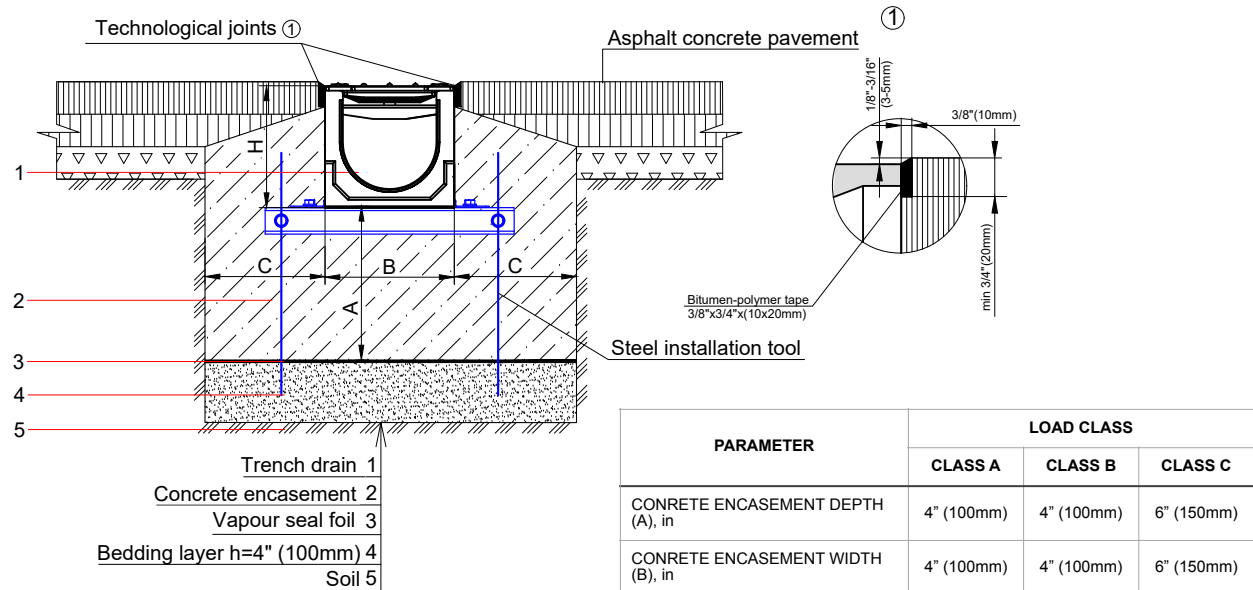
<input type="checkbox"/> 8" INLINE CATCH BASIN
<input type="checkbox"/> 8" END CAP W/ OUTLET
<input type="checkbox"/> 8" END CAP
<input type="checkbox"/> 8" MOUNTING BRACKETS
<input type="checkbox"/> 8" STEEL EDGE RAILS

REVISED: 2023

BASE 200PC SYSTEM - LOAD CLASS A15-C250

ENCLOSED ASPHALT PAVEMENT INSTALLATION

8" (200mm) BASE POLYMER CONCRETE TRENCH DRAIN



NOTES:

- SPECIFIER IS RESPONSIBLE FOR CONCRETE ENCASEMENT AND REINFORCING BASED UPON APPLICATION AND LOCAL CODES.
- EXPANSION AND CONTRACTION CONTROL JOINTS AND REINFORCEMENT ARE RECOMMENDED TO PROTECT CHANNEL AND CONCRETE SURROUND. ENGINEERING ADVICE MAY BE REQUIRED.
- THIS INSTALLATION SCHEME IS A RECOMMENDATION. CONSULT WITH THE MANUFACTURER FOR INSTALLATION INSTRUCTIONS.
- IF TRENCH DRAIN SYSTEM HAS A VERTICAL OUTLET AT THE END OF THE RUN, IT IS NECESSARY TO ADD AN ADDITIONAL 4" (100mm) OF CONCRETE ENCASEMENT AFTER THE END CAP.
- THE FINISHED LEVEL OF CONCRETE SURROUND SHOULD BE 1/8" - 3/16" (3-5mm) ABOVE THE TOP OF THE CHANNEL EDGE.

GENERAL: THE TRENCH DRAIN SHALL BE VODALAND CANADA BASE 200PC AS MANUFACTURED BY VODALAND OR APPROVED EQUAL.

SPECIFICATION: CHANNELS SHALL BE 39.4" (1000mm) LONG AND THE NOMINAL CLEAR OPENING SHALL BE 8" (200mm) WITH 9.4" (238mm) OVERALL WIDTH AND BUILT IN SLOPE OF 0.5% OR NEUTRAL 0% AS PER SPECIFIER'S REQUIREMENTS. CHANNELS SHALL HAVE MALE-TO-FEMALE INTERLOCKING JOINTS. CHANNELS CAN BE EQUIPPED WITH STEEL EDGE RAILS IF REQUIRED. GRATINGS SHALL MEET THE SYSTEM LOAD CLASS SPECIFIED. CHANNELS AND GRATE SHALL WITHSTAND A REQUIRED EN1433 LOAD CLASS.

MATERIALS: BASE 200PC TRENCH DRAIN SHALL BE MANUFACTURED FROM POLYMER CONCRETE WITH THE FOLLOWING APPROXIMATE PROPERTIES:

COMPRESSIVE STRENGTH	14,000 PSI
FLEXURAL STRENGTH	4,000 PSI
TENSILE STRENGTH	1,500 PSI
WATER ABSORPTION:	0.05%
FROST PROOF:	YES
DILUTE ACID AND ALKALI RESISTANT:	YES
SALT PROOF:	YES

THE COMPLETE DRAINAGE SYSTEM SHALL BE BY VODALAND CANADA INC. ANY DEVIATION OR PARTIAL SYSTEM DESIGN AND/OR IMPROPER INSTALLATION WILL VOID ANY AND ALL WARRANTIES PROVIDED BY VODALAND CANADA INC.

REVISED: 2023

Vodaland Canada Inc.

1-5900 Ambler Dr, Mississauga, ON L4W 2N3 • Phone: 905-238-1771 • Email: info@vodaland.ca

BASE 200PC SYSTEM - LOAD CLASS A15-C250

ENCLOSED ASPHALT PAVEMENT INSTALLATION

8" (200mm) BASE POLYMER CONCRETE TRENCH DRAIN**CHECK AND SPECIFY APPROPRIATE OPTIONS:****GRATE OPTIONS:**

<input type="checkbox"/> 25101	GALVANIZED STEEL GRATE SLOTTED	A15
<input type="checkbox"/> 25901	STAINLESS STEEL GRATE SLOTTED	A15
<input type="checkbox"/> 252018	GALVANIZED STEEL GRATE ADA	A15
<input type="checkbox"/> 255018	STAINLESS STEEL GRATE ADA	A15
<input type="checkbox"/> 25303	DUCTILE CAST IRON GRATE SLOTTED	C250
<input type="checkbox"/> 25403	DUCTILE CAST IRON GRATE MESH	C250
<input type="checkbox"/> 25403-ADA	DUCTILE CAST IRON GRATE ADA	C250

ADDITIONAL OPTIONS:

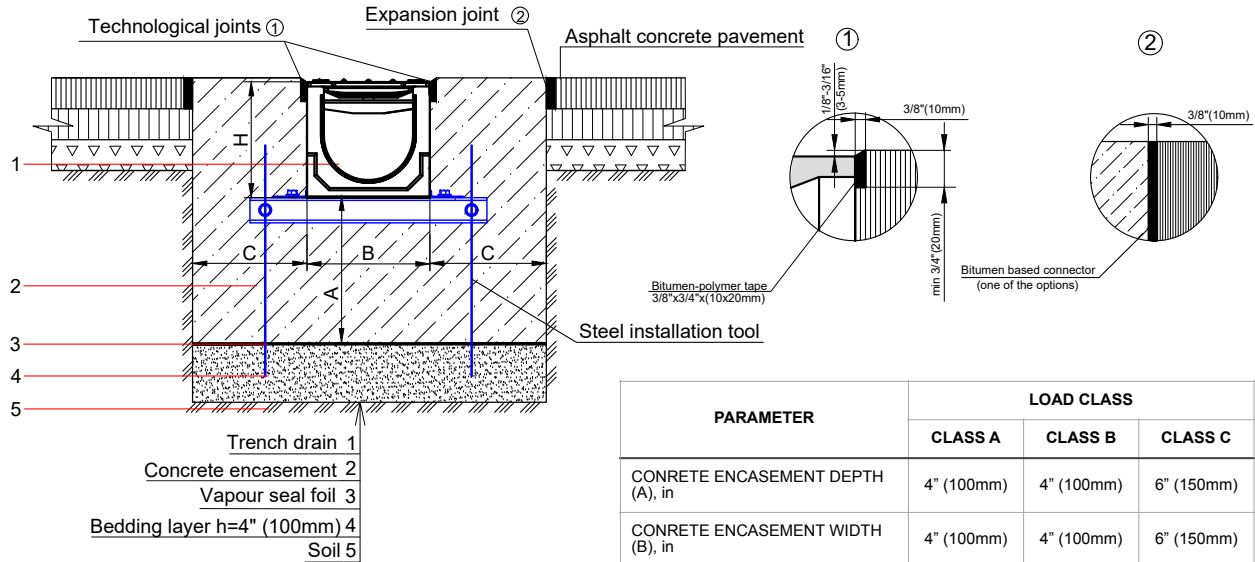
<input type="checkbox"/> 8" INLINE CATCH BASIN
<input type="checkbox"/> 8" END CAP W/ OUTLET
<input type="checkbox"/> 8" END CAP
<input type="checkbox"/> 8" MOUNTING BRACKETS
<input type="checkbox"/> 8" STEEL EDGE RAILS

REVISED: 2023

BASE 200PC SYSTEM - LOAD CLASS A15-C250

EXPOSED ASPHALT PAVEMENT INSTALLATION

8" (200mm) BASE POLYMER CONCRETE TRENCH DRAIN



NOTES:

- SPECIFIER IS RESPONSIBLE FOR CONCRETE ENCASEMENT AND REINFORCING BASED UPON APPLICATION AND LOCAL CODES.
- EXPANSION AND CONTRACTION CONTROL JOINTS AND REINFORCEMENT ARE RECOMMENDED TO PROTECT CHANNEL AND CONCRETE SURROUND. ENGINEERING ADVICE MAY BE REQUIRED.
- THIS INSTALLATION SCHEME IS A RECOMMENDATION. CONSULT WITH THE MANUFACTURER FOR INSTALLATION INSTRUCTIONS.
- IF TRENCH DRAIN SYSTEM HAS A VERTICAL OUTLET AT THE END OF THE RUN, IT IS NECESSARY TO ADD AN ADDITIONAL 4" (100mm) OF CONCRETE ENCASEMENT AFTER THE END CAP.
- THE FINISHED LEVEL OF CONCRETE SURROUND SHOULD BE 1/8" - 3/16" (3-5mm) ABOVE THE TOP OF THE CHANNEL EDGE.

GENERAL: THE TRENCH DRAIN SHALL BE VODALAND CANADA BASE 200PC AS MANUFACTURED BY VODALAND OR APPROVED EQUAL.

SPECIFICATION: CHANNELS SHALL BE 39.4" (1000mm) LONG AND THE NOMINAL CLEAR OPENING SHALL BE 8" (200mm) WITH 9.4" (238mm) OVERALL WIDTH AND BUILT IN SLOPE OF 0.5% OR NEUTRAL 0% AS PER SPECIFIER'S REQUIREMENTS. CHANNELS SHALL HAVE A MALE-TO-FEMALE INTERLOCKING JOINTS. CHANNELS CAN BE EQUIPPED WITH STEEL EDGE RAILS IF REQUIRED. GRATINGS SHALL MEET THE SYSTEM LOAD CLASS SPECIFIED. CHANNELS AND GRATE SHALL WITHSTAND A REQUIRED EN1433 LOAD CLASS.

MATERIALS: BASE 200PC TRENCH DRAIN SHALL BE MANUFACTURED FROM POLYMER CONCRETE WITH THE FOLLOWING APPROXIMATE PROPERTIES:

COMPRESSIVE STRENGTH	14,000 PSI
FLEXURAL STRENGTH	4,000 PSI
TENSILE STRENGTH	1,500 PSI
WATER ABSORPTION:	0.05%
FROST PROOF:	YES
DILUTE ACID AND ALKALI RESISTANT:	YES
SALT PROOF:	YES

THE COMPLETE DRAINAGE SYSTEM SHALL BE BY VODALAND CANADA INC. ANY DEVIATION OR PARTIAL SYSTEM DESIGN AND/OR IMPROPER INSTALLATION WILL VOID ANY AND ALL WARRANTIES PROVIDED BY VODALAND CANADA INC.

REVISED: 2023

Vodaland Canada Inc.

1-5900 Ambler Dr, Mississauga, ON L4W 2N3 • Phone: 905-238-1771 • Email: info@vodaland.ca

BASE 200PC SYSTEM - LOAD CLASS A15-C250

EXPOSED ASPHALT PAVEMENT INSTALLATION

8" (200mm) BASE POLYMER CONCRETE TRENCH DRAIN**CHECK AND SPECIFY APPROPRIATE OPTIONS:****GRATE OPTIONS:**

<input type="checkbox"/> 25101	GALVANIZED STEEL GRATE SLOTTED	A15
<input type="checkbox"/> 25901	STAINLESS STEEL GRATE SLOTTED	A15
<input type="checkbox"/> 252018	GALVANIZED STEEL GRATE ADA	A15
<input type="checkbox"/> 255018	STAINLESS STEEL GRATE ADA	A15
<input type="checkbox"/> 25303	DUCTILE CAST IRON GRATE SLOTTED	C250
<input type="checkbox"/> 25403	DUCTILE CAST IRON GRATE MESH	C250
<input type="checkbox"/> 25403-ADA	DUCTILE CAST IRON GRATE ADA	C250

ADDITIONAL OPTIONS:

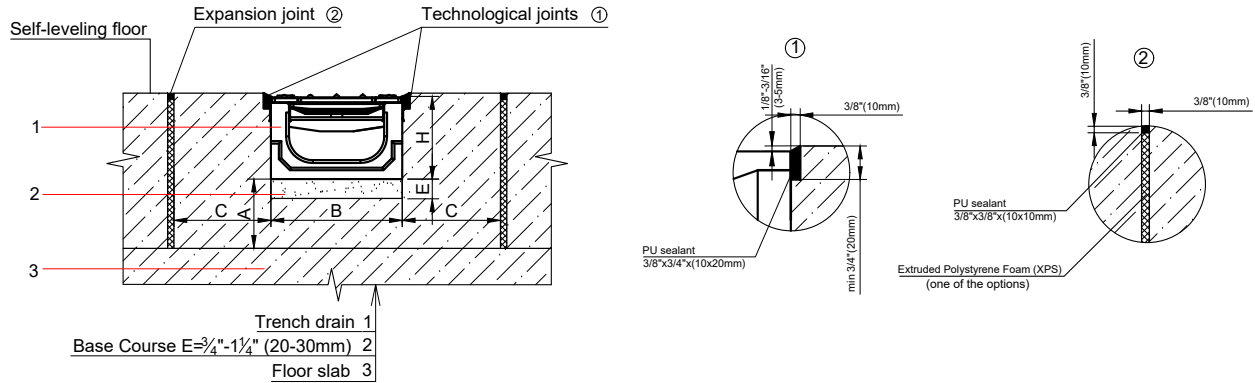
<input type="checkbox"/> 8" INLINE CATCH BASIN
<input type="checkbox"/> 8" END CAP W/ OUTLET
<input type="checkbox"/> 8" END CAP
<input type="checkbox"/> 8" MOUNTING BRACKETS
<input type="checkbox"/> 8" STEEL EDGE RAILS

REVISED: 2023

BASE 200PC SYSTEM - LOAD CLASS A15-C250

EXPOSED CONCRETE PAVEMENT SHALLOW INSTALLATION

8" (200mm) BASE POLYMER CONCRETE TRENCH DRAIN



PARAMETER	LOAD CLASS		
	CLASS A	CLASS B	CLASS C
CONCRETE ENCASEMENT DEPTH (A), in	4" (100mm)	4" (100mm)	6" (150mm)
CONCRETE ENCASEMENT WIDTH (B), in	4" (100mm)	4" (100mm)	6" (150mm)

NOTES:

- SPECIFIER IS RESPONSIBLE FOR CONCRETE ENCASEMENT AND REINFORCING BASED UPON APPLICATION AND LOCAL CODES.
- EXPANSION AND CONTRACTION CONTROL JOINTS AND REINFORCEMENT ARE RECOMMENDED TO PROTECT CHANNEL AND CONCRETE SURROUND. ENGINEERING ADVICE MAY BE REQUIRED.
- THIS INSTALLATION SCHEME IS A RECOMMENDATION. CONSULT WITH THE MANUFACTURER FOR INSTALLATION INSTRUCTIONS.
- IF TRENCH DRAIN SYSTEM HAS A VERTICAL OUTLET AT THE END OF THE RUN, IT IS NECESSARY TO ADD AN ADDITIONAL 4" (100mm) OF CONCRETE ENCASEMENT AFTER THE END CAP.
- THE FINISHED LEVEL OF CONCRETE SURROUND SHOULD BE 1/8" - 3/16" (3-5mm) ABOVE THE TOP OF THE CHANNEL EDGE.

GENERAL: THE TRENCH DRAIN SHALL BE VODALAND CANADA BASE 200PC AS MANUFACTURED BY VODALAND OR APPROVED EQUAL.

SPECIFICATION: CHANNELS SHALL BE 39.4" (1000mm) LONG AND THE NOMINAL CLEAR OPENING SHALL BE 8" (200mm) WITH 9.4" (238mm) OVERALL WIDTH AND BUILT IN SLOPE OF 0.5% OR NEUTRAL 0% AS PER SPECIFIER'S REQUIREMENTS. CHANNELS SHALL HAVE A MALE-TO-FEMALE INTERLOCKING JOINTS. CHANNELS CAN BE EQUIPPED WITH STEEL EDGE RAILS IF REQUIRED. GRATINGS SHALL MEET THE SYSTEM LOAD CLASS SPECIFIED. CHANNELS AND GRATE SHALL WITHSTAND A REQUIRED EN1433 LOAD CLASS.

MATERIALS: BASE 200PC TRENCH DRAIN SHALL BE MANUFACTURED FROM POLYMER CONCRETE WITH THE FOLLOWING APPROXIMATE PROPERTIES:

COMPRESSIVE STRENGTH	14,000 PSI
FLEXURAL STRENGTH	4,000 PSI
TENSILE STRENGTH	1,500 PSI
WATER ABSORPTION:	0.05%
FROST PROOF:	YES
DILUTE ACID AND ALKALI RESISTANT:	YES
SALT PROOF:	YES

THE COMPLETE DRAINAGE SYSTEM SHALL BE BY VODALAND CANADA INC. ANY DEVIATION OR PARTIAL SYSTEM DESIGN AND/OR IMPROPER INSTALLATION WILL VOID ANY AND ALL WARRANTIES PROVIDED BY VODALAND CANADA INC.

REVISED: 2023

Vodaland Canada Inc.

1-5900 Ambler Dr, Mississauga, ON L4W 2N3 • Phone: 905-238-1771 • Email: info@vodaland.ca

BASE 200PC SYSTEM - LOAD CLASS A15-C250

EXPOSED CONCRETE PAVEMENT SHALLOW INSTALLATION

8" (200mm) BASE POLYMER CONCRETE TRENCH DRAIN**CHECK AND SPECIFY APPROPRIATE OPTIONS:****GRATE OPTIONS:**

<input type="checkbox"/> 25101	GALVANIZED STEEL GRATE SLOTTED	A15
<input type="checkbox"/> 25901	STAINLESS STEEL GRATE SLOTTED	A15
<input type="checkbox"/> 252018	GALVANIZED STEEL GRATE ADA	A15
<input type="checkbox"/> 255018	STAINLESS STEEL GRATE ADA	A15
<input type="checkbox"/> 25303	DUCTILE CAST IRON GRATE SLOTTED	C250
<input type="checkbox"/> 25403	DUCTILE CAST IRON GRATE MESH	C250
<input type="checkbox"/> 25403-ADA	DUCTILE CAST IRON GRATE ADA	C250

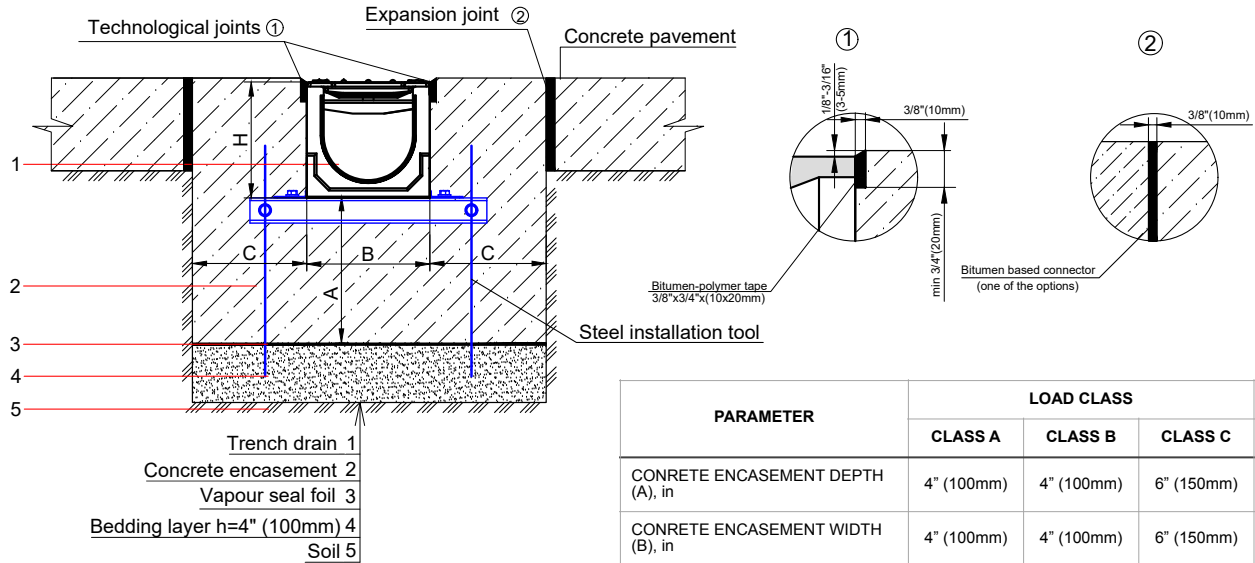
ADDITIONAL OPTIONS:

<input type="checkbox"/> 8" INLINE CATCH BASIN
<input type="checkbox"/> 8" END CAP W/ OUTLET
<input type="checkbox"/> 8" END CAP
<input type="checkbox"/> 8" MOUNTING BRACKETS
<input type="checkbox"/> 8" STEEL EDGE RAILS

BASE 200PC SYSTEM - LOAD CLASS A15-C250

EXPOSED CONCRETE PAVEMENT INSTALLATION

8" (200mm) BASE POLYMER CONCRETE TRENCH DRAIN



NOTES:

- SPECIFIER IS RESPONSIBLE FOR CONCRETE ENCASEMENT AND REINFORCING BASED UPON APPLICATION AND LOCAL CODES.
- EXPANSION AND CONTRACTION CONTROL JOINTS AND REINFORCEMENT ARE RECOMMENDED TO PROTECT CHANNEL AND CONCRETE SURROUND. ENGINEERING ADVICE MAY BE REQUIRED.
- THIS INSTALLATION SCHEME IS A RECOMMENDATION. CONSULT WITH THE MANUFACTURER FOR INSTALLATION INSTRUCTIONS.
- IF TRENCH DRAIN SYSTEM HAS A VERTICAL OUTLET AT THE END OF THE RUN, IT IS NECESSARY TO ADD AN ADDITIONAL 4" (100mm) OF CONCRETE ENCASEMENT AFTER THE END CAP.
- THE FINISHED LEVEL OF CONCRETE SURROUND SHOULD BE 1/8" - 3/16" (3-5mm) ABOVE THE TOP OF THE CHANNEL EDGE.

GENERAL: THE TRENCH DRAIN SHALL BE VODALAND CANADA BASE 200PC AS MANUFACTURED BY VODALAND OR APPROVED EQUAL.

SPECIFICATION: CHANNELS SHALL BE 39.4" (1000mm) LONG AND THE NOMINAL CLEAR OPENING SHALL BE 8" (200mm) WITH 9.4" (238mm) OVERALL WIDTH AND BUILT IN SLOPE OF 0.5% OR NEUTRAL 0% AS PER SPECIFIER'S REQUIREMENTS. CHANNELS SHALL HAVE A MALE-TO-FEMALE INTERLOCKING JOINTS. CHANNELS CAN BE EQUIPPED WITH STEEL EDGE RAILS IF REQUIRED. GRATINGS SHALL MEET THE SYSTEM LOAD CLASS SPECIFIED. CHANNELS AND GRATE SHALL WITHSTAND A REQUIRED EN1433 LOAD CLASS.

MATERIALS: BASE 200PC TRENCH DRAIN SHALL BE MANUFACTURED FROM POLYMER CONCRETE WITH THE FOLLOWING APPROXIMATE PROPERTIES:

COMPRESSIVE STRENGTH	14,000 PSI
FLEXURAL STRENGTH	4,000 PSI
TENSILE STRENGTH	1,500 PSI
WATER ABSORPTION:	0.05%
FROST PROOF:	YES
DILUTE ACID AND ALKALI RESISTANT:	YES
SALT PROOF:	YES

THE COMPLETE DRAINAGE SYSTEM SHALL BE BY VODALAND CANADA INC. ANY DEVIATION OR PARTIAL SYSTEM DESIGN AND/OR IMPROPER INSTALLATION WILL VOID ANY AND ALL WARRANTIES PROVIDED BY VODALAND CANADA INC.

REVISED: 2023

Vodaland Canada Inc.

1-5900 Ambler Dr, Mississauga, ON L4W 2N3 • Phone: 905-238-1771 • Email: info@vodaland.ca

BASE 200PC SYSTEM - LOAD CLASS A15-C250

EXPOSED CONCRETE PAVEMENT INSTALLATION

8" (200mm) BASE POLYMER CONCRETE TRENCH DRAIN**CHECK AND SPECIFY APPROPRIATE OPTIONS:****GRATE OPTIONS:**

<input type="checkbox"/> 25101	GALVANIZED STEEL GRATE SLOTTED	A15
<input type="checkbox"/> 25901	STAINLESS STEEL GRATE SLOTTED	A15
<input type="checkbox"/> 252018	GALVANIZED STEEL GRATE ADA	A15
<input type="checkbox"/> 255018	STAINLESS STEEL GRATE ADA	A15
<input type="checkbox"/> 25303	DUCTILE CAST IRON GRATE SLOTTED	C250
<input type="checkbox"/> 25403	DUCTILE CAST IRON GRATE MESH	C250
<input type="checkbox"/> 25403-ADA	DUCTILE CAST IRON GRATE ADA	C250

ADDITIONAL OPTIONS:

<input type="checkbox"/> 8" INLINE CATCH BASIN
<input type="checkbox"/> 8" END CAP W/ OUTLET
<input type="checkbox"/> 8" END CAP
<input type="checkbox"/> 8" MOUNTING BRACKETS
<input type="checkbox"/> 8" STEEL EDGE RAILS

REVISED: 2023