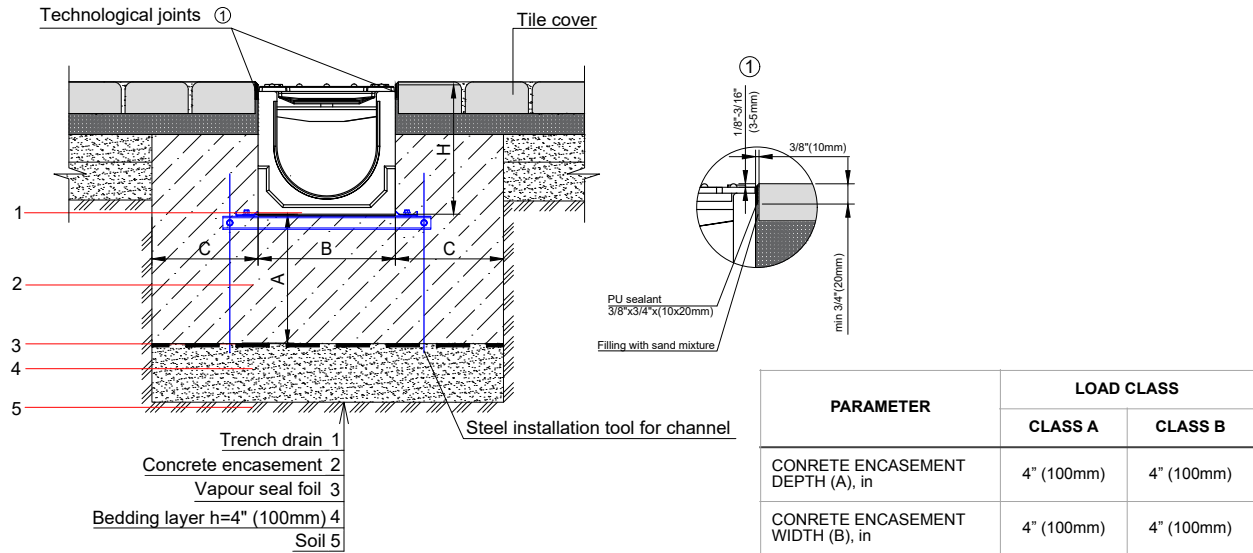


## BASE 150PC SYSTEM - LOAD CLASS A15-B125

### ENCLOSED PAVER PAVEMENT INSTALLATION

#### 6" (150mm) BASE POLYMER CONCRETE TRENCH DRAIN



#### NOTES:

- SPECIFIER IS RESPONSIBLE FOR CONCRETE ENCASEMENT AND REINFORCING BASED UPON APPLICATION AND LOCAL CODES.
- EXPANSION AND CONTRACTION CONTROL JOINTS AND REINFORCEMENT ARE RECOMMENDED TO PROTECT CHANNEL AND CONCRETE SURROUND. ENGINEERING ADVICE MAY BE REQUIRED.
- THIS INSTALLATION SCHEME IS A RECOMMENDATION. CONSULT WITH THE MANUFACTURER FOR INSTALLATION INSTRUCTIONS.
- IF TRENCH DRAIN SYSTEM HAS A VERTICAL OUTLET AT THE END OF THE RUN, IT IS NECESSARY TO ADD AN ADDITIONAL 4" (100mm) OF CONCRETE ENCASEMENT AFTER THE END CAP.
- THE FINISHED LEVEL OF CONCRETE SURROUND SHOULD BE 1/8" - 3/16" (3-5mm) ABOVE THE TOP OF THE CHANNEL EDGE.

**GENERAL:** THE TRENCH DRAIN SHALL BE VODALAND CANADA BASE 150PC AS MANUFACTURED BY VODALAND OR APPROVED EQUAL.

**SPECIFICATION:** CHANNELS SHALL BE 39.4" (1000mm) LONG AND THE NOMINAL CLEAR OPENING SHALL BE 6" (150mm) WITH 7.4" (188mm) OVERALL WIDTH AND BUILT IN SLOPE OF 0.5% OR NEUTRAL 0% AS PER SPECIFIER'S REQUIREMENTS. CHANNELS SHALL HAVE MALE-TO-FEMALE INTERLOCKING JOINTS. CHANNELS CAN BE EQUIPPED WITH STEEL EDGE RAILS IF REQUIRED. GRATINGS SHALL MEET THE SYSTEM LOAD CLASS SPECIFIED. CHANNELS AND GRATE SHALL WITHSTAND A REQUIRED EN1433 LOAD CLASS.

**MATERIALS:** BASE 150PC TRENCH DRAIN SHALL BE MANUFACTURED FROM POLYMER CONCRETE WITH THE FOLLOWING APPROXIMATE PROPERTIES:

COMPRESSIVE STRENGTH	14,000 PSI
FLEXURAL STRENGTH	4,000 PSI
TENSILE STRENGTH	1,500 PSI
WATER ABSORPTION:	0.05%
FROST PROOF:	YES
DILUTE ACID AND ALKALI RESISTANT:	YES
SALT PROOF:	YES

THE COMPLETE DRAINAGE SYSTEM SHALL BE BY VODALAND CANADA INC. ANY DEVIATION OR PARTIAL SYSTEM DESIGN AND/OR IMPROPER INSTALLATION WILL VOID ANY AND ALL WARRANTIES PROVIDED BY VODALAND CANADA INC.

**REVISED: 2023**

Vodaland Canada Inc.

1-5900 Ambler Dr, Mississauga, ON L4W 2N3 • Phone: 905-238-1771 • Email: [info@vodaland.ca](mailto:info@vodaland.ca)

**BASE 150PC SYSTEM - LOAD CLASS A15-B125**

ENCLOSED PAVER PAVEMENT INSTALLATION

**6" (150mm) BASE POLYMER CONCRETE TRENCH DRAIN****CHECK AND SPECIFY APPROPRIATE OPTIONS:****GRATE OPTIONS:**

<input type="checkbox"/> 22303	DUCTILE CAST IRON GRATE	C250
<input type="checkbox"/> 22202	GALVANIZED STEEL GRATE MESH ADA	B125
<input type="checkbox"/> 22502	STAINLESS STEEL GRATE MESH ADA	B125

**ADDITIONAL OPTIONS:**

<input type="checkbox"/> 6" INLINE CATCH BASIN
<input type="checkbox"/> 6" END CAP
<input type="checkbox"/> 6" END CAP W/ OUTLET
<input type="checkbox"/> 6" MOUNTING BRACKET
<input type="checkbox"/> 6" STEEL EDGE RAILS

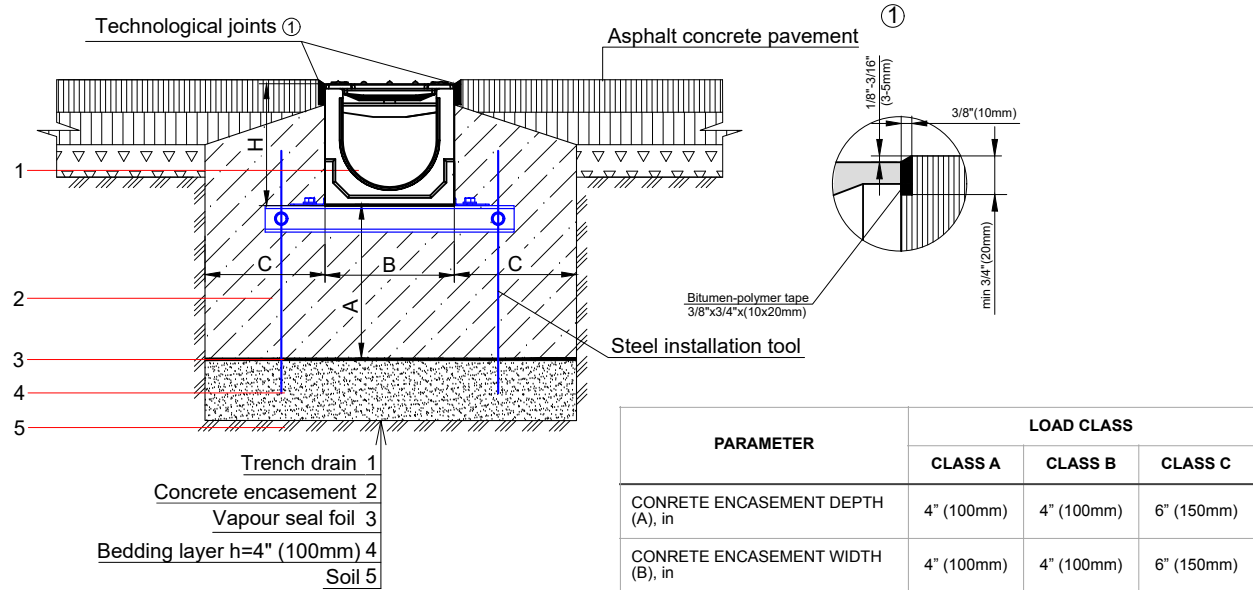
---

**REVISED: 2023**

## BASE 150PC SYSTEM - LOAD CLASS A15-C250

### ENCLOSED ASPHALT PAVEMENT INSTALLATION

#### 6" (150mm) BASE POLYMER CONCRETE TRENCH DRAIN



#### NOTES:

- SPECIFIER IS RESPONSIBLE FOR CONCRETE ENCASEMENT AND REINFORCING BASED UPON APPLICATION AND LOCAL CODES.
- EXPANSION AND CONTRACTION CONTROL JOINTS AND REINFORCEMENT ARE RECOMMENDED TO PROTECT CHANNEL AND CONCRETE SURROUND. ENGINEERING ADVICE MAY BE REQUIRED.
- THIS INSTALLATION SCHEME IS A RECOMMENDATION. CONSULT WITH THE MANUFACTURER FOR INSTALLATION INSTRUCTIONS.
- IF TRENCH DRAIN SYSTEM HAS A VERTICAL OUTLET AT THE END OF THE RUN, IT IS NECESSARY TO ADD AN ADDITIONAL 4" (100mm) OF CONCRETE ENCASEMENT AFTER THE END CAP.
- THE FINISHED LEVEL OF CONCRETE SURROUND SHOULD BE 1/8" - 3/16" (3-5mm) ABOVE THE TOP OF THE CHANNEL EDGE.

**GENERAL:** THE TRENCH DRAIN SHALL BE VODALAND CANADA BASE 150PC AS MANUFACTURED BY VODALAND OR APPROVED EQUAL.

**SPECIFICATION:** CHANNELS SHALL BE 39.4" (1000mm) LONG AND THE NOMINAL CLEAR OPENING SHALL BE 6" (150mm) WITH 7.4" (188mm) OVERALL WIDTH AND BUILT IN SLOPE OF 0.5% OR NEUTRAL 0% AS PER SPECIFIER'S REQUIREMENTS. CHANNELS SHALL HAVE MALE-TO-FEMALE INTERLOCKING JOINTS. CHANNELS CAN BE EQUIPPED WITH STEEL EDGE RAILS IF REQUIRED. GRATINGS SHALL MEET THE SYSTEM LOAD CLASS SPECIFIED. CHANNELS AND GRATE SHALL WITHSTAND A REQUIRED EN1433 LOAD CLASS.

**MATERIALS:** BASE 150PC TRENCH DRAIN SHALL BE MANUFACTURED FROM POLYMER CONCRETE WITH THE FOLLOWING APPROXIMATE PROPERTIES:

COMPRESSIVE STRENGTH	14,000 PSI
FLEXURAL STRENGTH	4,000 PSI
TENSILE STRENGTH	1,500 PSI
WATER ABSORPTION:	0.05%
FROST PROOF:	YES
DILUTE ACID AND ALKALI RESISTANT:	YES
SALT PROOF:	YES

THE COMPLETE DRAINAGE SYSTEM SHALL BE BY VODALAND CANADA INC. ANY DEVIATION OR PARTIAL SYSTEM DESIGN AND/OR IMPROPER INSTALLATION WILL VOID ANY AND ALL WARRANTIES PROVIDED BY VODALAND CANADA INC.

**REVISED: 2023**

**Vodaland Canada Inc.**

1-5900 Ambler Dr, Mississauga, ON L4W 2N3 • Phone: 905-238-1771 • Email: [info@vodaland.ca](mailto:info@vodaland.ca)

**BASE 150PC SYSTEM - LOAD CLASS A15-C250**

ENCLOSED ASPHALT PAVEMENT INSTALLATION

**6" (150mm) BASE POLYMER CONCRETE TRENCH DRAIN****CHECK AND SPECIFY APPROPRIATE OPTIONS:****GRATE OPTIONS:**

<input type="checkbox"/> 22303	DUCTILE CAST IRON GRATE	C250
<input type="checkbox"/> 22202	GALVANIZED STEEL GRATE MESH ADA	B125
<input type="checkbox"/> 22502	STAINLESS STEEL GRATE MESH ADA	B125

**ADDITIONAL OPTIONS:**

<input type="checkbox"/> 6" INLINE CATCH BASIN
<input type="checkbox"/> 6" END CAP
<input type="checkbox"/> 6" END CAP W/ OUTLET
<input type="checkbox"/> 6" MOUNTING BRACKET
<input type="checkbox"/> 6" STEEL EDGE RAILS

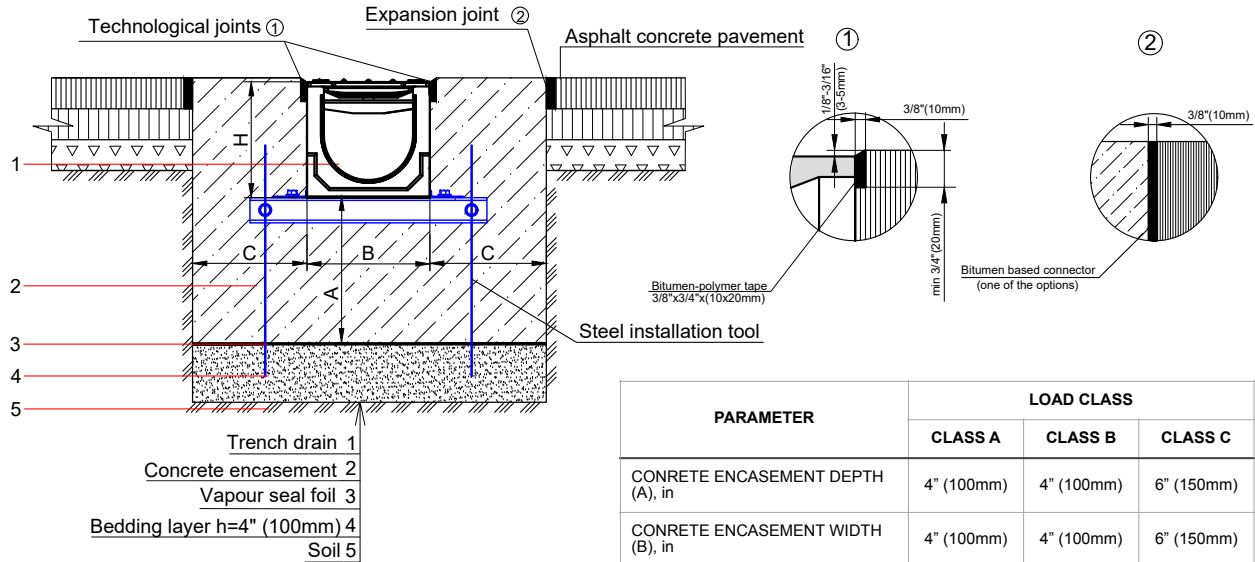
---

**REVISED: 2023**

## BASE 150PC SYSTEM - LOAD CLASS A15-C250

### EXPOSED ASPHALT PAVEMENT INSTALLATION

#### 6" (150mm) BASE POLYMER CONCRETE TRENCH DRAIN



#### NOTES:

1. SPECIFIER IS RESPONSIBLE FOR CONCRETE ENCASEMENT AND REINFORCING BASED UPON APPLICATION AND LOCAL CODES.
2. EXPANSION AND CONTRACTION CONTROL JOINTS AND REINFORCEMENT ARE RECOMMENDED TO PROTECT CHANNEL AND CONCRETE SURROUND. ENGINEERING ADVICE MAY BE REQUIRED.
3. THIS INSTALLATION SCHEME IS A RECOMMENDATION. CONSULT WITH THE MANUFACTURER FOR INSTALLATION INSTRUCTIONS.
4. IF TRENCH DRAIN SYSTEM HAS A VERTICAL OUTLET AT THE END OF THE RUN, IT IS NECESSARY TO ADD AN ADDITIONAL 4" (100mm) OF CONCRETE ENCASEMENT AFTER THE END CAP.
5. THE FINISHED LEVEL OF CONCRETE SURROUND SHOULD BE 1/8" - 3/16" (3-5mm) ABOVE THE TOP OF THE CHANNEL EDGE.

**GENERAL:** THE TRENCH DRAIN SHALL BE VODALAND CANADA BASE 150PC AS MANUFACTURED BY VODALAND OR APPROVED EQUAL.

**SPECIFICATION:** CHANNELS SHALL BE 39.4" (1000mm) LONG AND THE NOMINAL CLEAR OPENING SHALL BE 6" (150mm) WITH 7.4" (188mm) OVERALL WIDTH AND BUILT IN SLOPE OF 0.5% OR NEUTRAL 0% AS PER SPECIFIER'S REQUIREMENTS. CHANNELS SHALL HAVE MALE-TO-FEMALE INTERLOCKING JOINTS. CHANNELS CAN BE EQUIPPED WITH STEEL EDGE RAILS IF REQUIRED. GRATINGS SHALL MEET THE SYSTEM LOAD CLASS SPECIFIED. CHANNELS AND GRATE SHALL WITHSTAND A REQUIRED EN1433 LOAD CLASS.

**MATERIALS:** BASE 150PC TRENCH DRAIN SHALL BE MANUFACTURED FROM POLYMER CONCRETE WITH THE FOLLOWING APPROXIMATE PROPERTIES:

COMPRESSIVE STRENGTH	14,000 PSI
FLEXURAL STRENGTH	4,000 PSI
TENSILE STRENGTH	1,500 PSI
WATER ABSORPTION:	0.05%
FROST PROOF:	YES
DILUTE ACID AND ALKALI RESISTANT:	YES
SALT PROOF:	YES

THE COMPLETE DRAINAGE SYSTEM SHALL BE BY VODALAND CANADA INC. ANY DEVIATION OR PARTIAL SYSTEM DESIGN AND/OR IMPROPER INSTALLATION WILL VOID ANY AND ALL WARRANTIES PROVIDED BY VODALAND CANADA INC.

**REVISED: 2023**

**Vodaland Canada Inc.**

1-5900 Ambler Dr, Mississauga, ON L4W 2N3 • Phone: 905-238-1771 • Email: [info@vodaland.ca](mailto:info@vodaland.ca)

**BASE 150PC SYSTEM - LOAD CLASS A15-C250**

EXPOSED ASPHALT PAVEMENT INSTALLATION

*6" (150mm) BASE POLYMER CONCRETE TRENCH DRAIN***CHECK AND SPECIFY APPROPRIATE OPTIONS:****GRATE OPTIONS:**

<input type="checkbox"/> 22303	DUCTILE CAST IRON GRATE	C250
<input type="checkbox"/> 22202	GALVANIZED STEEL GRATE MESH ADA	B125
<input type="checkbox"/> 22502	STAINLESS STEEL GRATE MESH ADA	B125

**ADDITIONAL OPTIONS:**

<input type="checkbox"/> 6" INLINE CATCH BASIN
<input type="checkbox"/> 6" END CAP
<input type="checkbox"/> 6" END CAP W/ OUTLET
<input type="checkbox"/> 6" MOUNTING BRACKET
<input type="checkbox"/> 6" STEEL EDGE RAILS

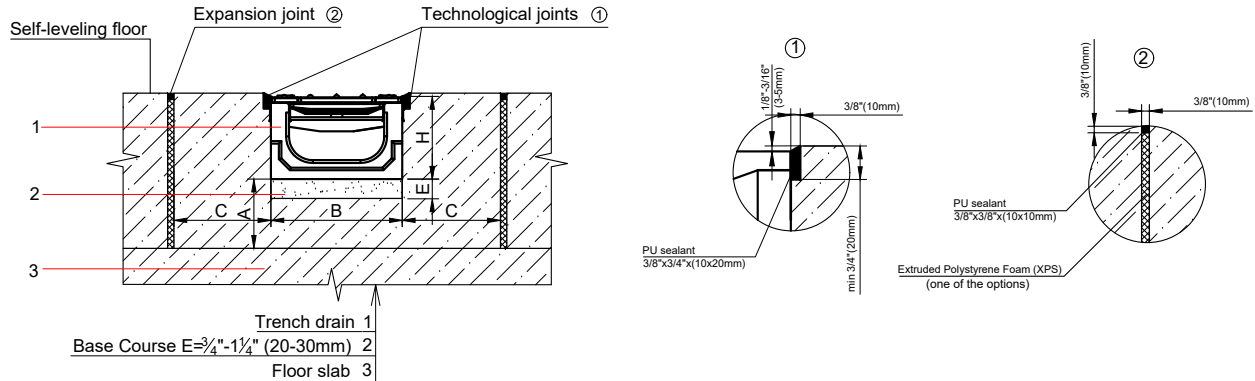
---

**REVISED: 2023**

## BASE 150PC SYSTEM - LOAD CLASS A15-C250

### EXPOSED CONCRETE PAVEMENT SHALLOW INSTALLATION

#### 6" (150mm) BASE POLYMER CONCRETE TRENCH DRAIN



PARAMETER	LOAD CLASS		
	CLASS A	CLASS B	CLASS C
CONCRETE ENCASEMENT DEPTH (A), in	4" (100mm)	4" (100mm)	6" (150mm)
CONCRETE ENCASEMENT WIDTH (B), in	4" (100mm)	4" (100mm)	6" (150mm)

#### NOTES:

- SPECIFIER IS RESPONSIBLE FOR CONCRETE ENCASEMENT AND REINFORCING BASED UPON APPLICATION AND LOCAL CODES.
- EXPANSION AND CONTRACTION CONTROL JOINTS AND REINFORCEMENT ARE RECOMMENDED TO PROTECT CHANNEL AND CONCRETE SURROUND. ENGINEERING ADVICE MAY BE REQUIRED.
- THIS INSTALLATION SCHEME IS A RECOMMENDATION. CONSULT WITH THE MANUFACTURER FOR INSTALLATION INSTRUCTIONS.
- IF TRENCH DRAIN SYSTEM HAS A VERTICAL OUTLET AT THE END OF THE RUN, IT IS NECESSARY TO ADD AN ADDITIONAL 4" (100mm) OF CONCRETE ENCASEMENT AFTER THE END CAP.
- THE FINISHED LEVEL OF CONCRETE SURROUND SHOULD BE 1/8" - 3/16" (3-5mm) ABOVE THE TOP OF THE CHANNEL EDGE.

**GENERAL:** THE TRENCH DRAIN SHALL BE VODALAND CANADA BASE 150PC AS MANUFACTURED BY VODALAND OR APPROVED EQUAL.

**SPECIFICATION:** CHANNELS SHALL BE 39.4" (1000mm) LONG AND THE NOMINAL CLEAR OPENING SHALL BE 6" (150mm) WITH 7.4" (188mm) OVERALL WIDTH AND BUILT IN SLOPE OF 0.5% OR NEUTRAL 0% AS PER SPECIFIER'S REQUIREMENTS. CHANNELS SHALL HAVE MALE-TO-FEMALE INTERLOCKING JOINTS. CHANNELS CAN BE EQUIPPED WITH STEEL EDGE RAILS IF REQUIRED. GRATINGS SHALL MEET THE SYSTEM LOAD CLASS SPECIFIED. CHANNELS AND GRATE SHALL WITHSTAND A REQUIRED EN1433 LOAD CLASS.

**MATERIALS:** BASE 150PC TRENCH DRAIN SHALL BE MANUFACTURED FROM POLYMER CONCRETE WITH THE FOLLOWING APPROXIMATE PROPERTIES:

COMPRESSIVE STRENGTH	14,000 PSI
FLEXURAL STRENGTH	4,000 PSI
TENSILE STRENGTH	1,500 PSI
WATER ABSORPTION:	0.05%
FROST PROOF:	YES
DILUTE ACID AND ALKALI RESISTANT:	YES
SALT PROOF:	YES

THE COMPLETE DRAINAGE SYSTEM SHALL BE BY VODALAND CANADA INC. ANY DEVIATION OR PARTIAL SYSTEM DESIGN AND/OR IMPROPER INSTALLATION WILL VOID ANY AND ALL WARRANTIES PROVIDED BY VODALAND CANADA INC.

**REVISED: 2023**

**Vodaland Canada Inc.**

1-5900 Ambler Dr, Mississauga, ON L4W 2N3 • Phone: 905-238-1771 • Email: [info@vodaland.ca](mailto:info@vodaland.ca)

**BASE 150PC SYSTEM - LOAD CLASS A15-C250**

EXPOSED CONCRETE PAVEMENT SHALLOW INSTALLATION

**6" (150mm) BASE POLYMER CONCRETE TRENCH DRAIN****CHECK AND SPECIFY APPROPRIATE OPTIONS:****GRATE OPTIONS:**

<input type="checkbox"/> 22303	DUCTILE CAST IRON GRATE	C250
<input type="checkbox"/> 22202	GALVANIZED STEEL GRATE MESH ADA	B125
<input type="checkbox"/> 22502	STAINLESS STEEL GRATE MESH ADA	B125

**ADDITIONAL OPTIONS:**

<input type="checkbox"/> 6" INLINE CATCH BASIN
<input type="checkbox"/> 6" END CAP
<input type="checkbox"/> 6" END CAP W/ OUTLET
<input type="checkbox"/> 6" MOUNTING BRACKET
<input type="checkbox"/> 6" STEEL EDGE RAILS

---

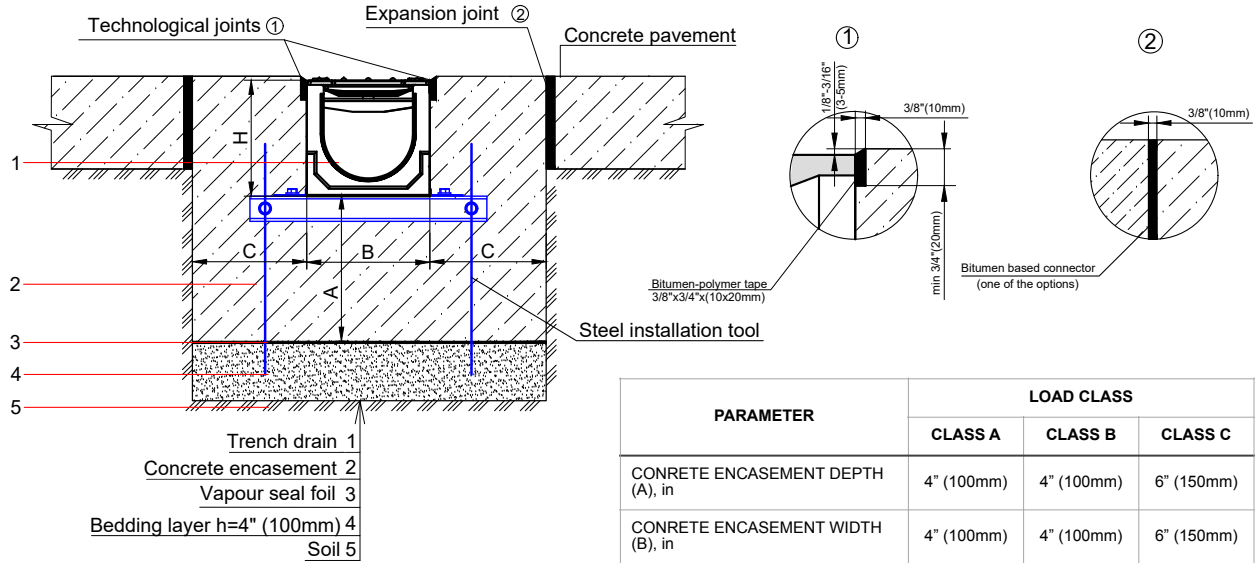
**REVISED: 2023**



## BASE 150PC SYSTEM - LOAD CLASS A15-C250

### EXPOSED CONCRETE PAVEMENT INSTALLATION

#### 6" (150mm) BASE POLYMER CONCRETE TRENCH DRAIN



#### NOTES:

- SPECIFIER IS RESPONSIBLE FOR CONCRETE ENCASEMENT AND REINFORCING BASED UPON APPLICATION AND LOCAL CODES.
- EXPANSION AND CONTRACTION CONTROL JOINTS AND REINFORCEMENT ARE RECOMMENDED TO PROTECT CHANNEL AND CONCRETE SURROUND. ENGINEERING ADVICE MAY BE REQUIRED.
- THIS INSTALLATION SCHEME IS A RECOMMENDATION. CONSULT WITH THE MANUFACTURER FOR INSTALLATION INSTRUCTIONS.
- IF TRENCH DRAIN SYSTEM HAS A VERTICAL OUTLET AT THE END OF THE RUN, IT IS NECESSARY TO ADD AN ADDITIONAL 4" (100mm) OF CONCRETE ENCASEMENT AFTER THE END CAP.
- THE FINISHED LEVEL OF CONCRETE SURROUND SHOULD BE 1/8" - 3/16" (3-5mm) ABOVE THE TOP OF THE CHANNEL EDGE.

**GENERAL:** THE TRENCH DRAIN SHALL BE VODALAND CANADA BASE 150PC AS MANUFACTURED BY VODALAND OR APPROVED EQUAL.

**SPECIFICATION:** CHANNELS SHALL BE 39.4" (1000mm) LONG AND THE NOMINAL CLEAR OPENING SHALL BE 6" (150mm) WITH 7.4" (188mm) OVERALL WIDTH AND BUILT IN SLOPE OF 0.5% OR NEUTRAL 0% AS PER SPECIFIER'S REQUIREMENTS. CHANNELS SHALL HAVE MALE-TO-FEMALE INTERLOCKING JOINTS. CHANNELS CAN BE EQUIPPED WITH STEEL EDGE RAILS IF REQUIRED. GRATINGS SHALL MEET THE SYSTEM LOAD CLASS SPECIFIED. CHANNELS AND GRATE SHALL WITHSTAND A REQUIRED EN1433 LOAD CLASS.

**MATERIALS:** BASE 150PC TRENCH DRAIN SHALL BE MANUFACTURED FROM POLYMER CONCRETE WITH THE FOLLOWING APPROXIMATE PROPERTIES:

COMPRESSIVE STRENGTH	14,000 PSI
FLEXURAL STRENGTH	4,000 PSI
TENSILE STRENGTH	1,500 PSI
WATER ABSORPTION:	0.05%
FROST PROOF:	YES
DILUTE ACID AND ALKALI RESISTANT:	YES
SALT PROOF:	YES

THE COMPLETE DRAINAGE SYSTEM SHALL BE BY VODALAND CANADA INC. ANY DEVIATION OR PARTIAL SYSTEM DESIGN AND/OR IMPROPER INSTALLATION WILL VOID ANY AND ALL WARRANTIES PROVIDED BY VODALAND CANADA INC.

**REVISED: 2023**

**Vodaland Canada Inc.**

1-5900 Ambler Dr, Mississauga, ON L4W 2N3 • Phone: 905-238-1771 • Email: [info@vodaland.ca](mailto:info@vodaland.ca)

**BASE 150PC SYSTEM - LOAD CLASS A15-C250**

EXPOSED CONCRETE PAVEMENT INSTALLATION

**6" (150mm) BASE POLYMER CONCRETE TRENCH DRAIN****CHECK AND SPECIFY APPROPRIATE OPTIONS:****GRATE OPTIONS:**

<input type="checkbox"/> 22303	DUCTILE CAST IRON GRATE	C250
<input type="checkbox"/> 22202	GALVANIZED STEEL GRATE MESH ADA	B125
<input type="checkbox"/> 22502	STAINLESS STEEL GRATE MESH ADA	B125

**ADDITIONAL OPTIONS:**

<input type="checkbox"/> 6" INLINE CATCH BASIN
<input type="checkbox"/> 6" END CAP
<input type="checkbox"/> 6" END CAP W/ OUTLET
<input type="checkbox"/> 6" MOUNTING BRACKET
<input type="checkbox"/> 6" STEEL EDGE RAILS

---

**REVISED: 2023**