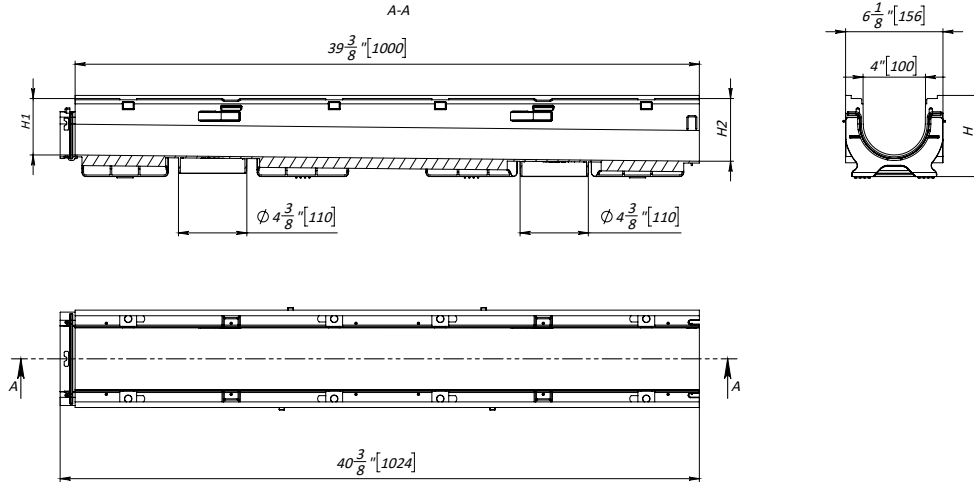


BASE 100P SYSTEM - LOAD CLASS A15-C250

4" (100mm) BASE PLASTIC TRENCH DRAIN



General: The trench drain shall be Vodaland Canada BASE 100P as manufactured by Vodaland or approved equal.

Specification: BASE 100P trench drain shall be 39.4" (1000mm) long and the nominal clear opening shall be 4" (100mm) with 6.1" (156mm) overall width. Channels shall be manufactured from UV stabilized 100% recycled polypropylene. Units shall have male-to-female interlocking joints that will not separate during the installation. Channels shall have a radiused self cleaning bottom with a Manning's coefficient of 0.009 and 1% or neutral 0% built in slope. Channels can be equipped with steel edge rails if required. Gratings shall meet the system load class specified. Channels and grate shall withstand a required EN1433 load class.

Notes:

1. See flow rate chart for channel flow rates.

Neutral channels

Name	Item #	H, in	H, mm	W, lb
4" BASE neutral channel H2.36"	80060	2.36	60	2.4
4" BASE neutral channel H3.15"	80080	3.15	80	2.7
4" BASE neutral channel H3.94"	80100	3.94	100	3
4" BASE neutral channel H4.72"	80120	4.72	120	3.6
4" BASE neutral channel H5.83"	80150	5.83	148	4.3
4" BASE neutral channel H7.87"	80200	7.87	200	5.4

REVISED: 2023

BASE 100P SYSTEM - LOAD CLASS A15-C250
4" (100mm) BASE PLASTIC TRENCH DRAIN
1% slope channels

Name	Item #	H, in	H, mm	H1, in	H1, mm	H2, in	H2, mm	W, lb
4" BASE sloped channel 1	80080-1	3.15	80	1.65	42	1.97	50	2.7
4" BASE sloped channel 2	80090-2	3.54	90	1.97	50	2.36	60	3
4" BASE sloped channel 3	80100-3	3.94	100	2.36	60	2.76	70	3.1
4" BASE sloped channel 4	80110-4	4.33	110	2.76	70	3.15	80	3.6
4" BASE sloped channel 5	80120-5	4.72	120	3.15	80	3.54	88	3.7
4" BASE sloped channel 6	80130-6	5.12	130	3.54	90	3.94	100	3.9
4" BASE sloped channel 7	80140-7	5.51	140	3.94	100	4.33	110	4
4" BASE sloped channel 8	80150-8	5.91	150	4.33	110	4.72	120	4
4" BASE sloped channel 9	80160-9	6.29	160	4.72	120	5.12	130	4.6
4" BASE sloped channel 10	80170-10	6.69	170	5.12	130	5.47	139	4.8
4" BASE sloped channel 11	80180-11	7.09	180	5.47	139	5.83	148	5
4" BASE sloped channel 12	80190-12	7.48	190	5.83	148	6.18	157	5.2
4" BASE sloped channel 13	80200-13	7.87	200	6.18	157	6.54	166	5.4

Notes:

- Each channel has two bottom outlets Ø110mm.
- Channels feature 90-degree connection on each side.
- Slopes of less than 1% can be achieved using both neutral and sloped channels.

Flow rate chart, 1% slope

Channel item #	GPM		L/s	
	70% water fill	100% water fill	70% water fill	100% water fill
80080-1	51.20	83.85	3.23	5.29
80090-2	61.82	100.65	3.9	6.35
80100-3	65.62	111.59	4.14	7.04
80110-4	76.08	130.13	4.8	8.21
80120-5	90.19	152.64	5.69	9.63
80130-6	106.20	177.37	6.7	11.19
80140-7	123.32	203.36	7.78	12.83
80150-8	141.23	229.99	8.91	14.51
80160-9	158.66	255.83	10.01	16.14
80170-10	175.94	281.34	11.1	17.75
80180-11	193.06	306.70	12.18	19.35
80190-12	210.49	332.07	13.28	20.95
80200-13	227.77	357.43	14.37	22.55

REVISED: 2023

BASE 100P SYSTEM - LOAD CLASS A15-C250
4" (100mm) BASE PLASTIC TRENCH DRAIN
Grating options

Name	Item #	Load class
Galvanized steel grate slotted (1m)	20101	A15
Copper grate slotted (1m)	20601	A15
Stainless steel grate slotted (1m)	20901	A15
Plastic grate slotted (0.5m)	208019	A15
Galvanized steel grate ADA (1m)	202018	A15
Stainless steel grate ADA (1m)	205018	A15
Galvanized steel grate mesh ADA (1m)	2020	B125
Stainless steel grate mesh ADA (1m)	20902	B125
Ductile cast iron grate slotted (0.5m)	20303	C250
Ductile cast iron grate mesh (0.5m)	20403	C250
Ductile cast iron grate ADA (0.5m)	20403-ADA	C250
Ductile cast iron grate slotted (0.5m)	283031	C250
Ductile cast iron grate "Protector" (0.5m)	203032	C250

Notes:

- For detailed grate drawings refer to Vodaland Canada website or consult with one of our professionals.

End caps

Channel name	End cap item #		End cap w/ outlet item #
	H1, shallow inv.	H2, deep inv.	
4" BASE sloped channel 1	630060	630-1	6308-1
4" BASE sloped channel 2	630-1	630-1	6308-1
4" BASE sloped channel 3	630-1	630-2	6308-2
4" BASE sloped channel 4	630-2	630-2	6308-2
4" BASE sloped channel 5	630-2	630-2	6308-2
4" BASE sloped channel 6	630-2	630-2	6308-3
4" BASE sloped channel 7	630-2	630-2	6308-3
4" BASE sloped channel 8	630-2	630-2	6308-3
4" BASE sloped channel 9	630-3	630-3	6308-4
4" BASE sloped channel 10	630-3	630-3	6308-4
4" BASE sloped channel 11	630-3	630-3	6308-4
4" BASE sloped channel 12	630-3	630-3	6308-4
4" BASE sloped channel 13	630-3	630-3	6308-4

REVISED: 2023

BASE 100P SYSTEM - LOAD CLASS A15-C250*4" (100mm) BASE PLASTIC TRENCH DRAIN***Other accessories**

Name	Item #
Mounting brackets	6104
Rebar bracket supports	RBR10G-450
4" PVC pipe adapter	6815-4