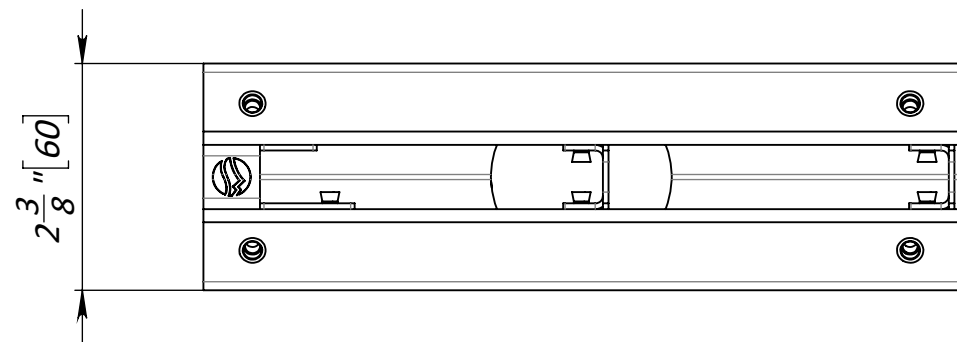


Approved by:  
 Signature: \_\_\_\_\_  
 Name: \_\_\_\_\_  
 Title: \_\_\_\_\_  
 Date: \_\_\_\_\_



1. Dimensions for reference, inch [mm]
2. Delivery and packaging are carried out in accordance with the terms of the contract
3. The manufacturer reserves the right, without notice to the consumer, to make changes to the design of the products for improvement of their technological and operational parameters, which will not affect the quality and properties of the product.

UNLESS OTHERWISE SPECIFIED: DIMENSIONS ARE IN MILLIMETERS SURFACE FINISH: TOLERANCES: ISO 2768-m LINEAR: ANGULAR:		FINISH:  passivated	DEBURR AND BREAK SHARP EDGES	DO NOT SCALE DRAWING	REVISION
DRAWN		NAME	SIGNATURE	DATE	TITLE: <b>Stainless Steel Drain Channel Mini Slot H5" vertical outlet 2"</b>
CHK'D					Load class A15
APPV'D					ARTICLE: <b>994011</b>
MFG					A3
Q.A					
		MATERIAL: <b>Stainless Steel (AISI 304)</b>		WEIGHT: 1,74 lb / 0.89 kg	SCALE: 1:2
				SHEET 1 OF 1	