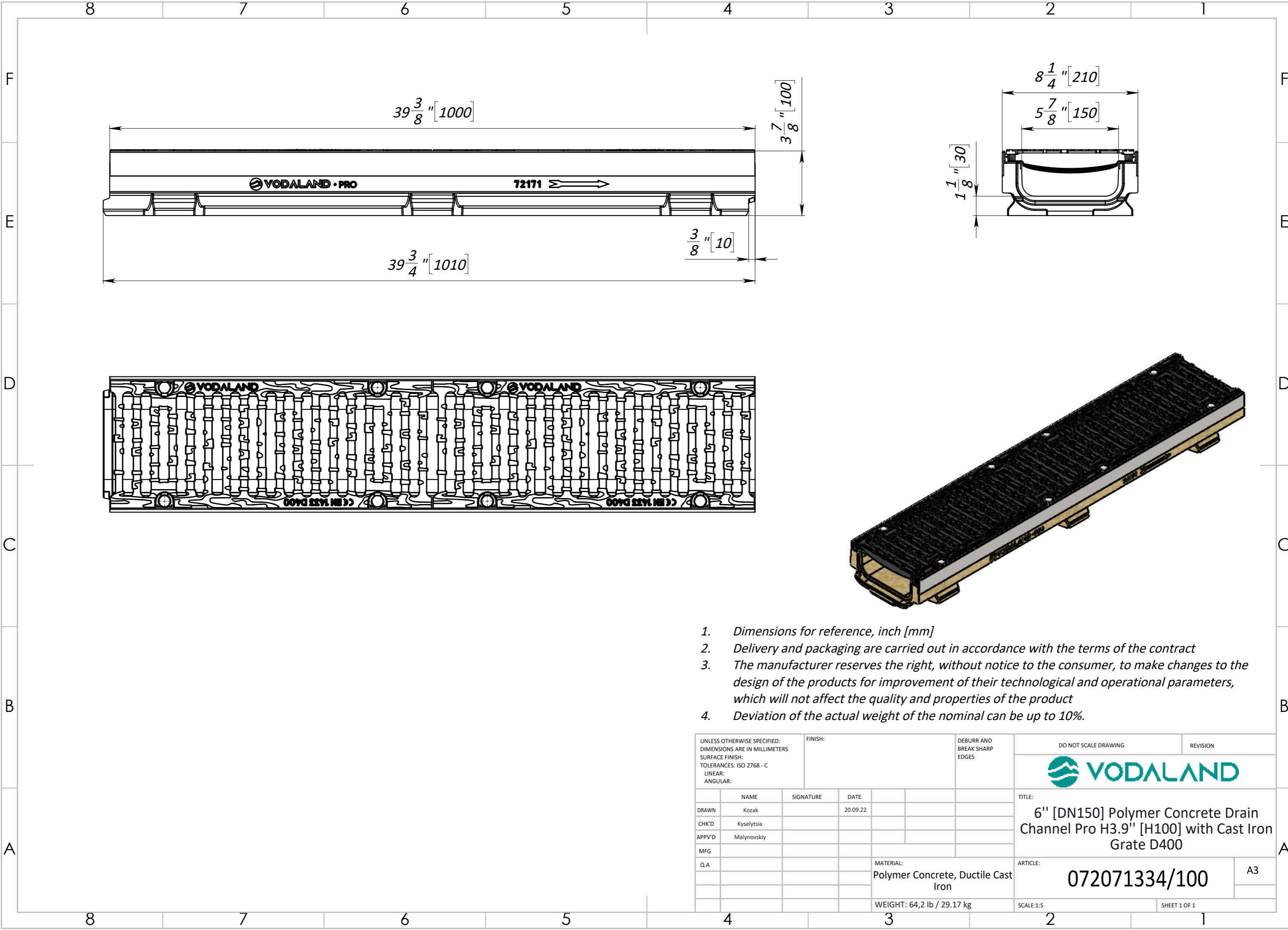
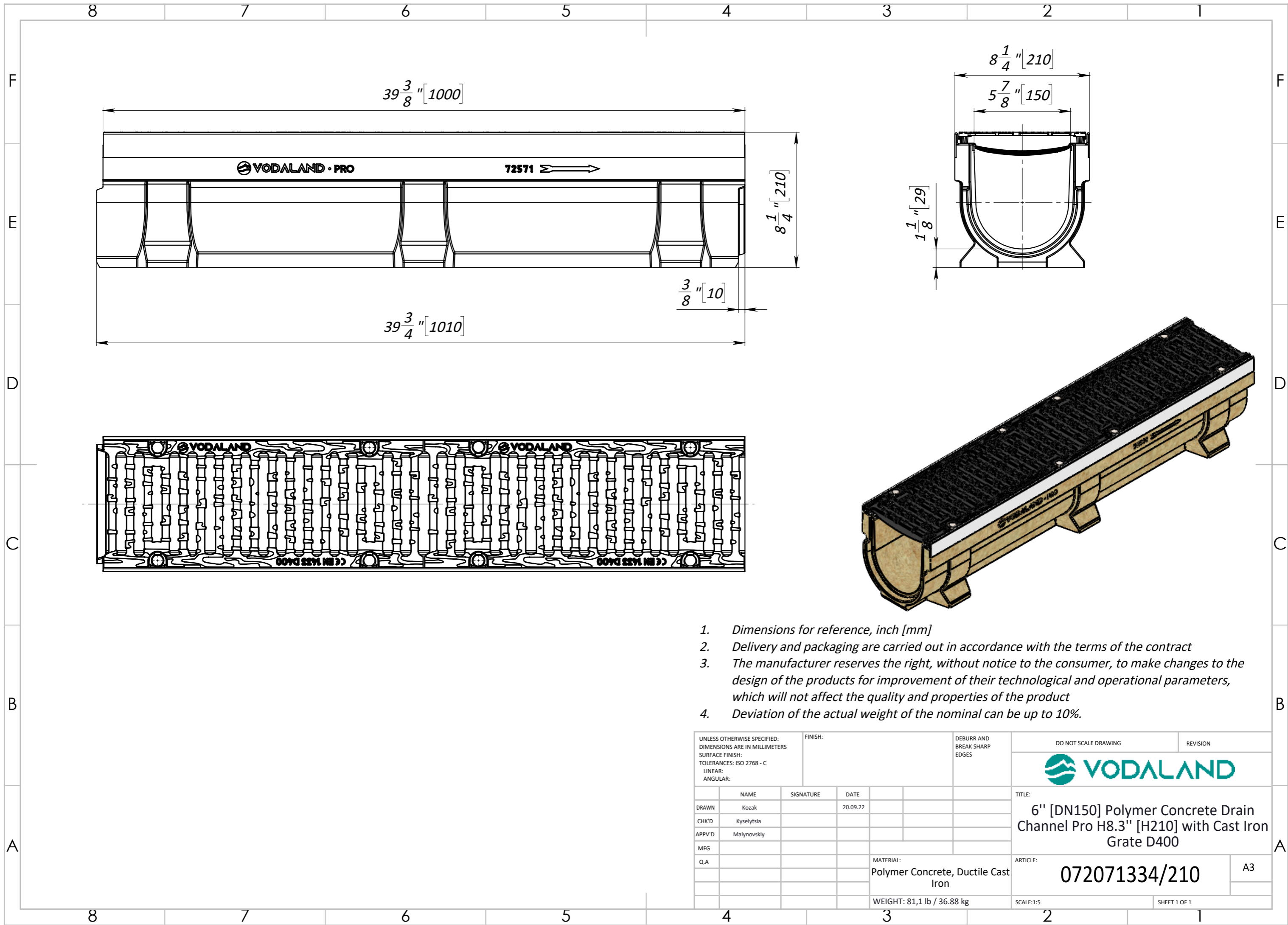



1. Dimensions for reference, inch [mm]
2. Delivery and packaging are carried out in accordance with the terms of the contract
3. The manufacturer reserves the right, without notice to the consumer, to make changes to the design of the products for improvement of their technological and operational parameters, which will not affect the quality and properties of the product
4. Deviation of the actual weight of the nominal can be up to 10%.

UNLESS OTHERWISE SPECIFIED: DIMENSIONS ARE IN MILLIMETERS SURFACE FINISH: TOLERANCES: ISO 2768 - C LINEAR: ANGULAR:		FINISH:		DEBURR AND BREAK SHARP EDGES		DO NOT SCALE DRAWING		REVISION	
DRAWN		NAME		SIGNATURE		DATE		TITLE:	
CHK'D		Kozak				20.09.22		<b>6" [DN150] Polymer Concrete Drain Channel Pro H3.9" [H100] with Cast Iron Grate D400</b>	
APPV'D		Kyselytsia							
MFG		Malynovskiy							
Q.A									
						MATERIAL:		ARTICLE:	
						Polymer Concrete, Ductile Cast Iron		072071334/100	
						WEIGHT: 64,2 lb / 29.17 kg		SCALE: 1:5	
								SHEET 1 OF 1	

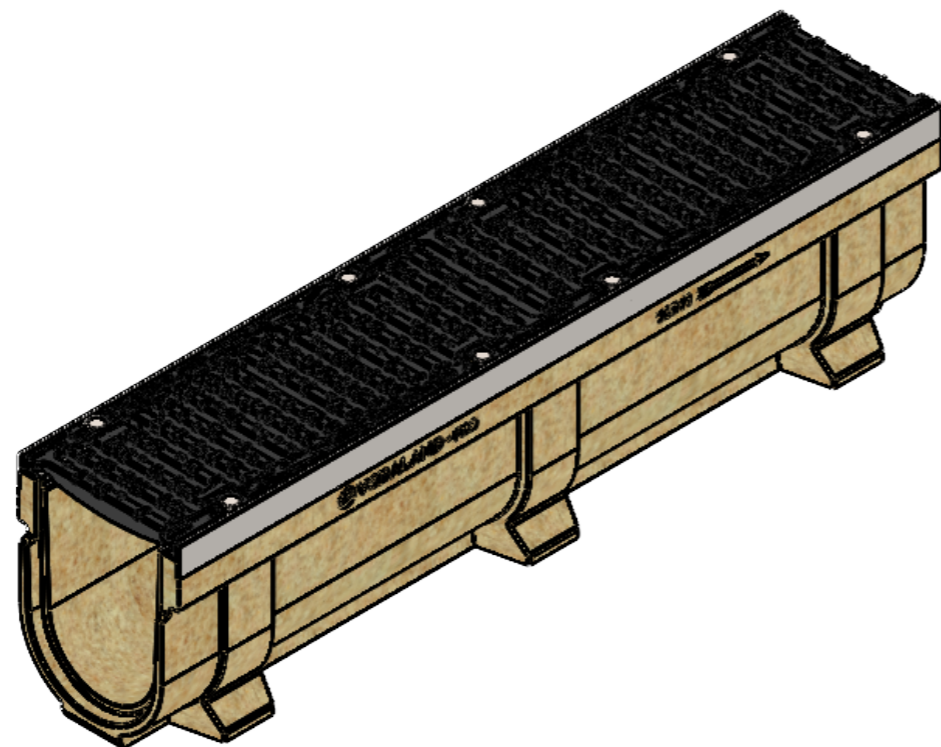
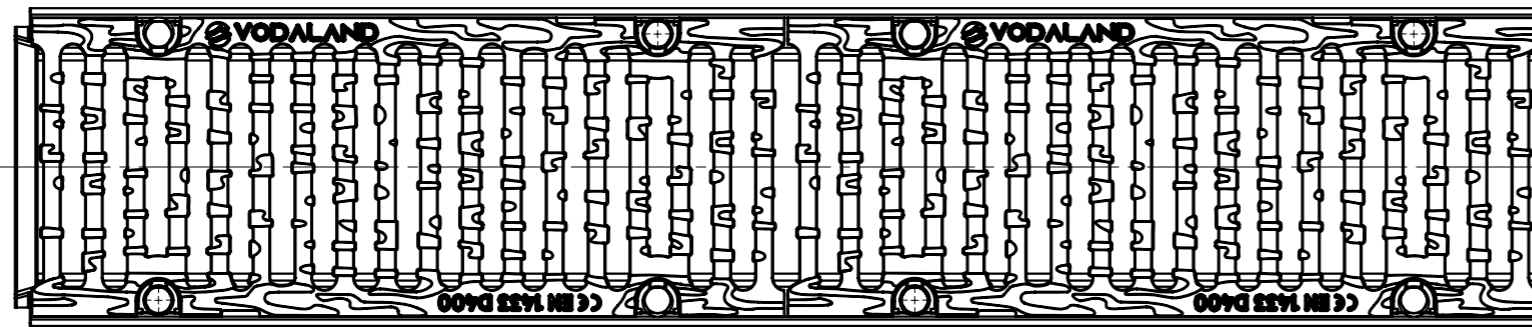
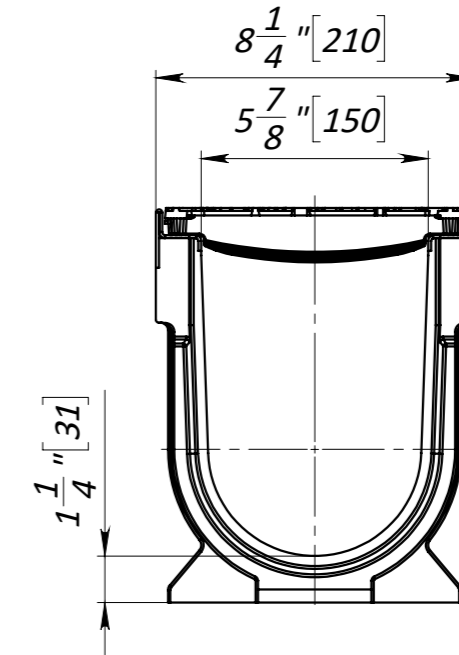
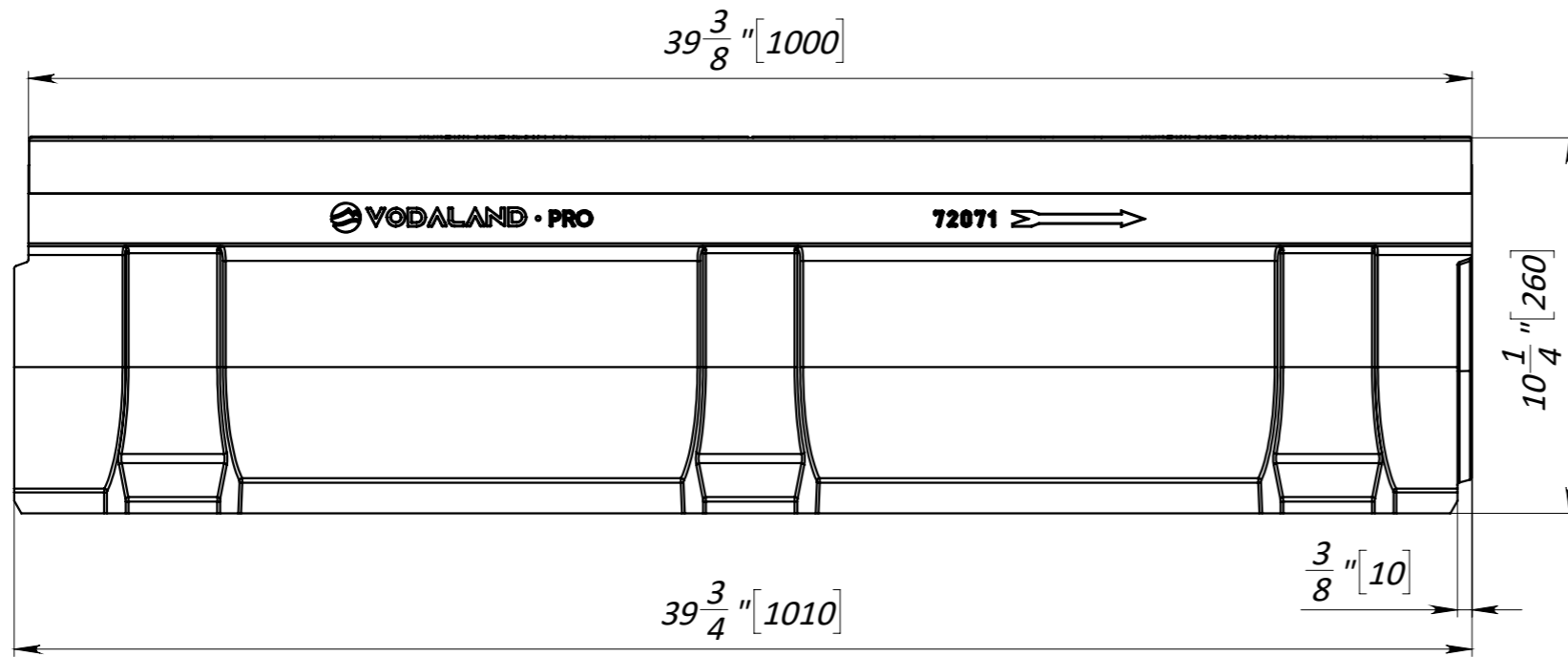





1. Dimensions for reference, inch [mm]
2. Delivery and packaging are carried out in accordance with the terms of the contract
3. The manufacturer reserves the right, without notice to the consumer, to make changes to the design of the products for improvement of their technological and operational parameters, which will not affect the quality and properties of the product
4. Deviation of the actual weight of the nominal can be up to 10%.

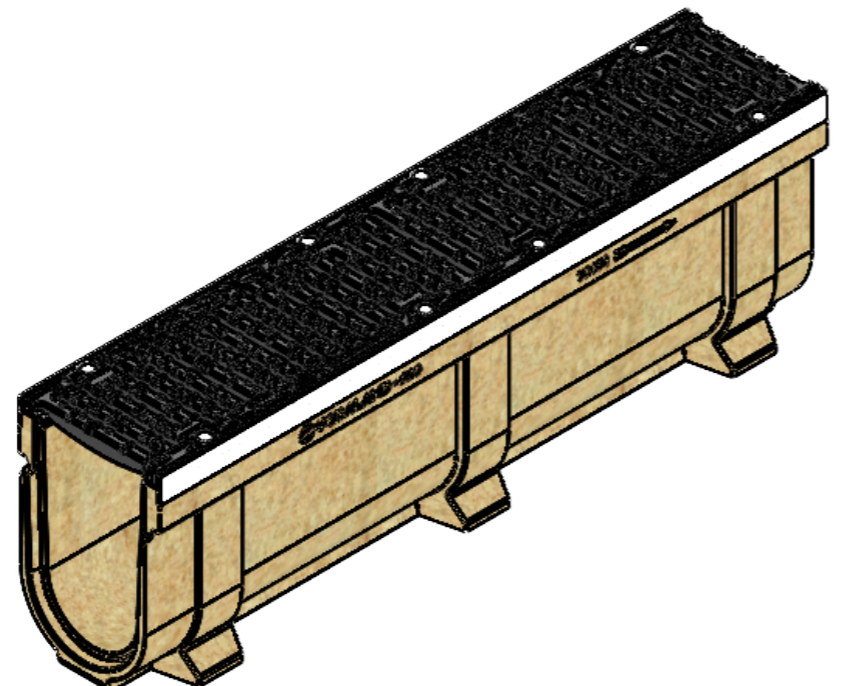
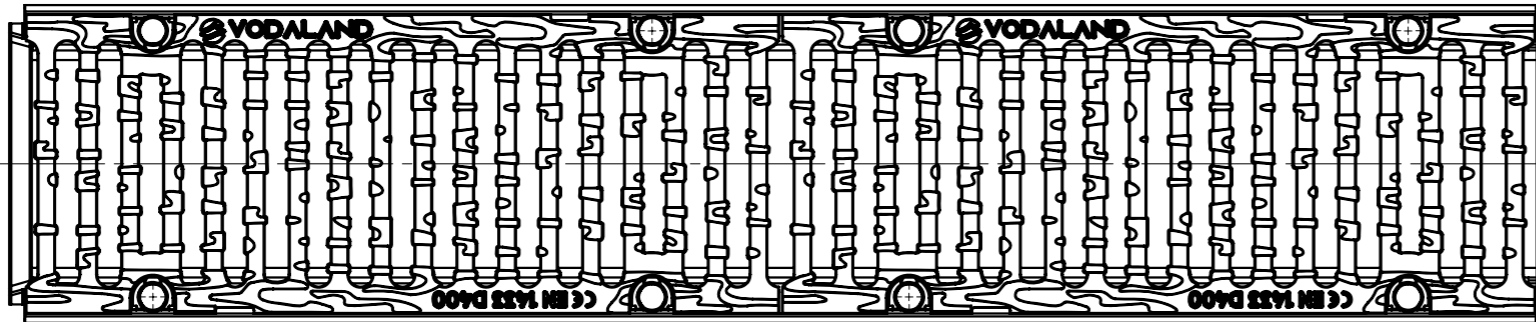
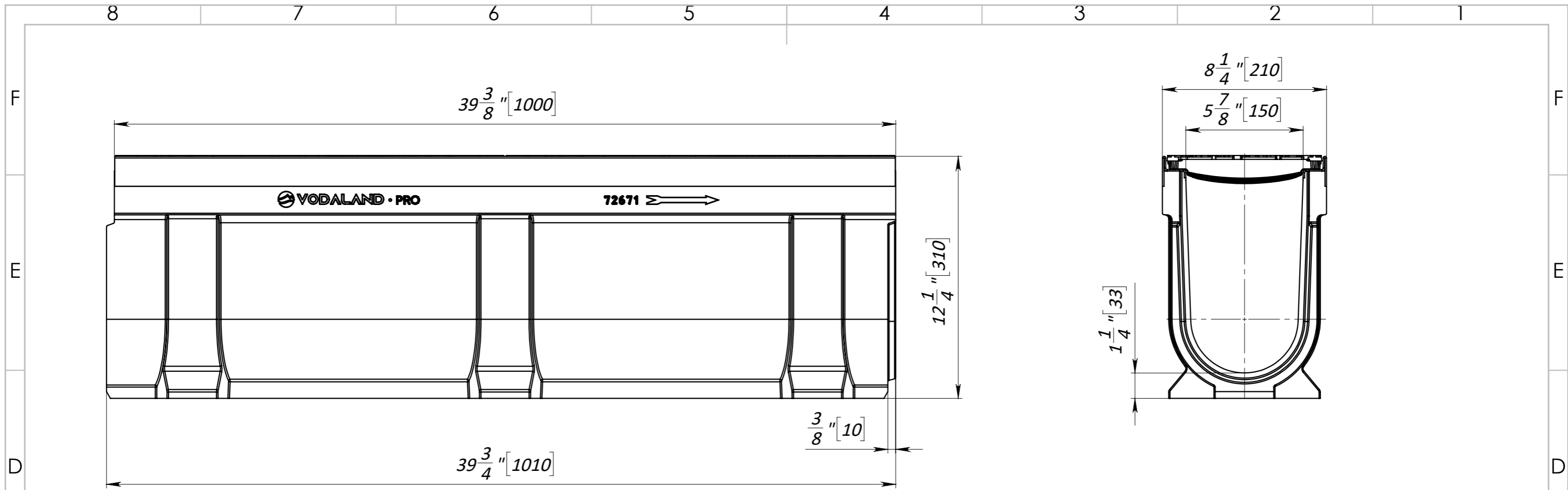
UNLESS OTHERWISE SPECIFIED: DIMENSIONS ARE IN MILLIMETERS SURFACE FINISH: TOLERANCES: ISO 2768 - C LINEAR: ANGULAR:			FINISH:		DEBURR AND BREAK SHARP EDGES		DO NOT SCALE DRAWING		REVISION	
										
									TITLE:	
									6" [DN150] Polymer Concrete Drain Channel Pro H8.3" [H210] with Cast Iron Grate D400	
									ARTICLE:	
									072071334/210	
									A3	
					MATERIAL: Polymer Concrete, Ductile Cast Iron					
					WEIGHT: 81,1 lb / 36.88 kg		SCALE: 1:5		SHEET 1 OF 1	

	NAME	SIGNATURE	DATE
DRAWN	Kozak		20.09.22
CHK'D	Kyselytsia		
APPV'D	Malynovskiy		
MFG			
Q.A			




1. Dimensions for reference, inch [mm]
2. Delivery and packaging are carried out in accordance with the terms of the contract
3. The manufacturer reserves the right, without notice to the consumer, to make changes to the design of the products for improvement of their technological and operational parameters, which will not affect the quality and properties of the product
4. Deviation of the actual weight of the nominal can be up to 10%.

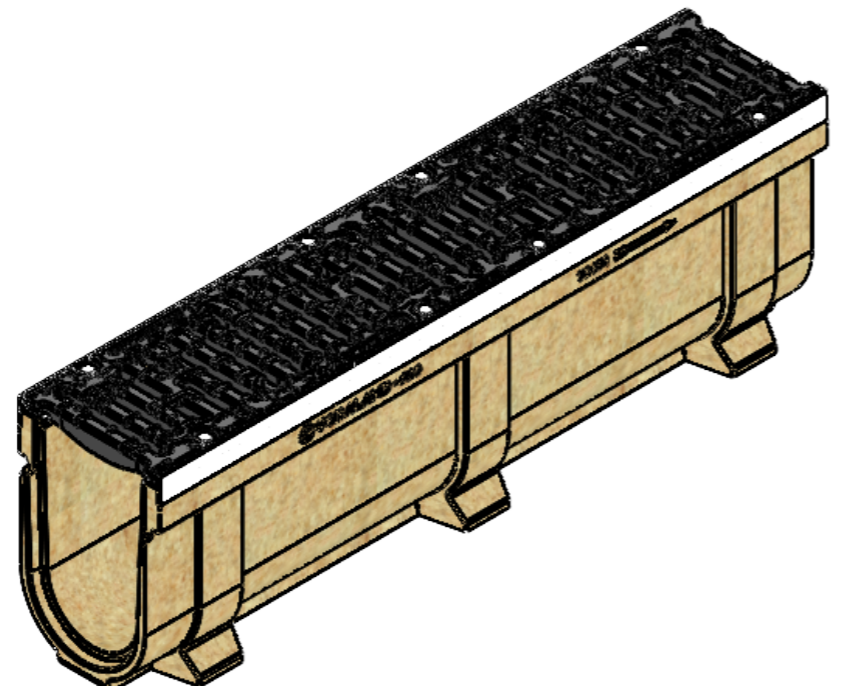
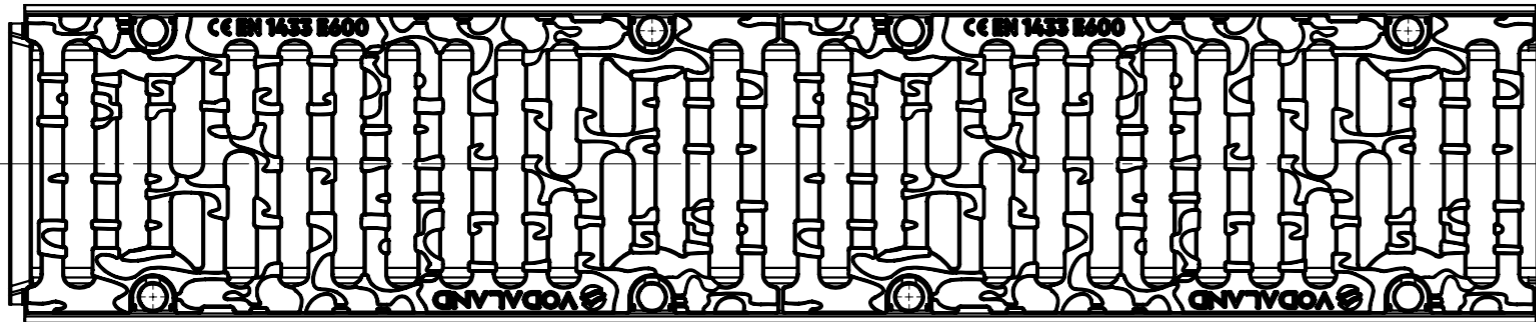
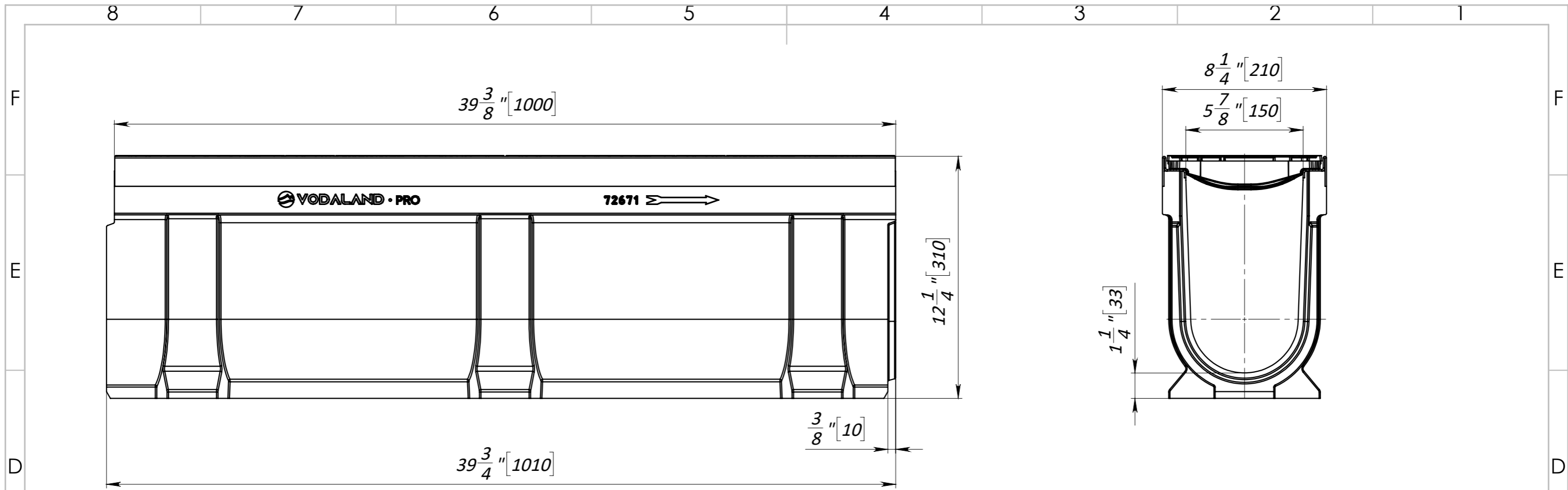
UNLESS OTHERWISE SPECIFIED: DIMENSIONS ARE IN MILLIMETERS SURFACE FINISH: TOLERANCES: ISO 2768 - C LINEAR: ANGULAR:		FINISH:	DEBURR AND BREAK SHARP EDGES	DO NOT SCALE DRAWING	REVISION
NAME	SIGNATURE	DATE		 <b>TITLE:</b> 6" [DN150] Polymer Concrete Drain Channel Pro H10.2" [H260] with Cast Iron Grate D400  <b>ARTICLE:</b> 072071334/260	
DRAWN	Kozak	20.09.22			
CHK'D	Kyselytsia				
APPV'D	Malynovskiy				
MFG					
Q.A			MATERIAL: Polymer Concrete, Ductile Cast Iron	SCALE:1:5	A3
			WEIGHT: 91,2 lb / 41.46 kg	SHEET 1 OF 1	




1. Dimensions for reference, inch [mm]
2. Delivery and packaging are carried out in accordance with the terms of the contract
3. The manufacturer reserves the right, without notice to the consumer, to make changes to the design of the products for improvement of their technological and operational parameters, which will not affect the quality and properties of the product
4. Deviation of the actual weight of the nominal can be up to 10%.

UNLESS OTHERWISE SPECIFIED: DIMENSIONS ARE IN MILLIMETERS SURFACE FINISH: TOLERANCES: ISO 2768 - C LINEAR: ANGULAR:		FINISH:	DEBURR AND BREAK SHARP EDGES	DO NOT SCALE DRAWING	REVISION
DRAWN: Kozak		SIGNATURE:	DATE: 20.09.22	 <b>TITLE:</b> 6" [DN150] Polymer Concrete Drain Channel Pro H12.2" [H310] with Cast Iron Grate D400 <b>ARTICLE:</b> 072071334/310	
CHK'D: Kyselytsia					
APPV'D: Malynovskiy					
MFG:					
Q.A:					
		MATERIAL: Polymer Concrete, Ductile Cast Iron		SCALE: 1:5	
		WEIGHT: 101,8 lb / 46.31 kg		SHEET 1 OF 1	

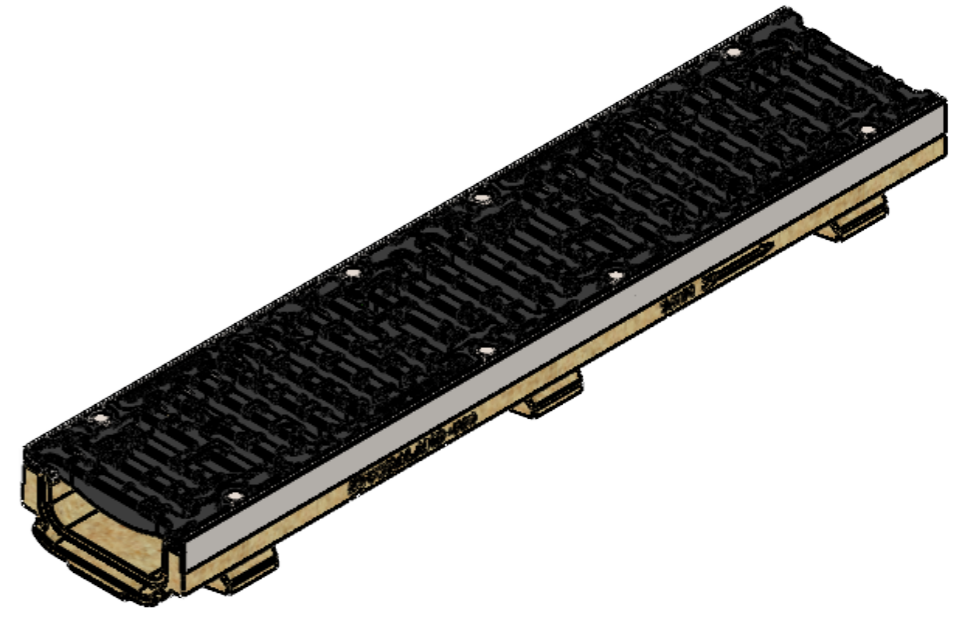
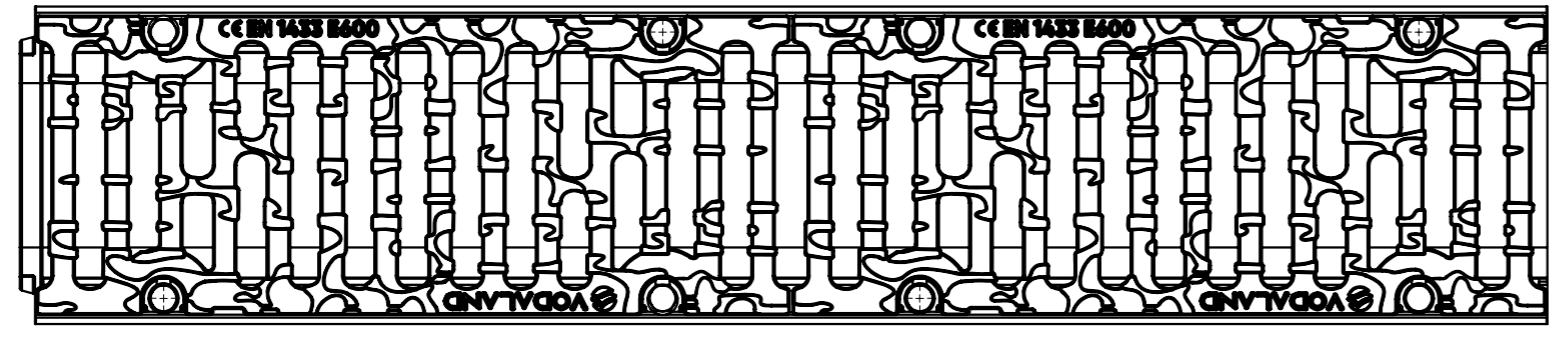
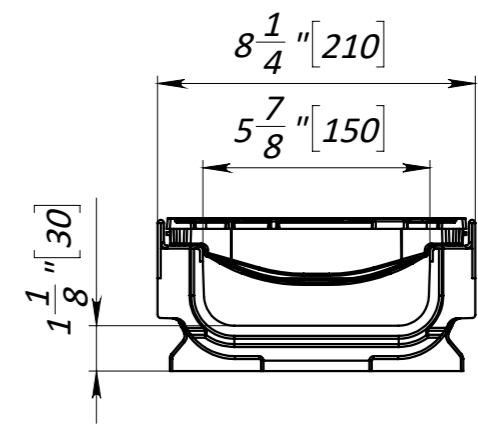
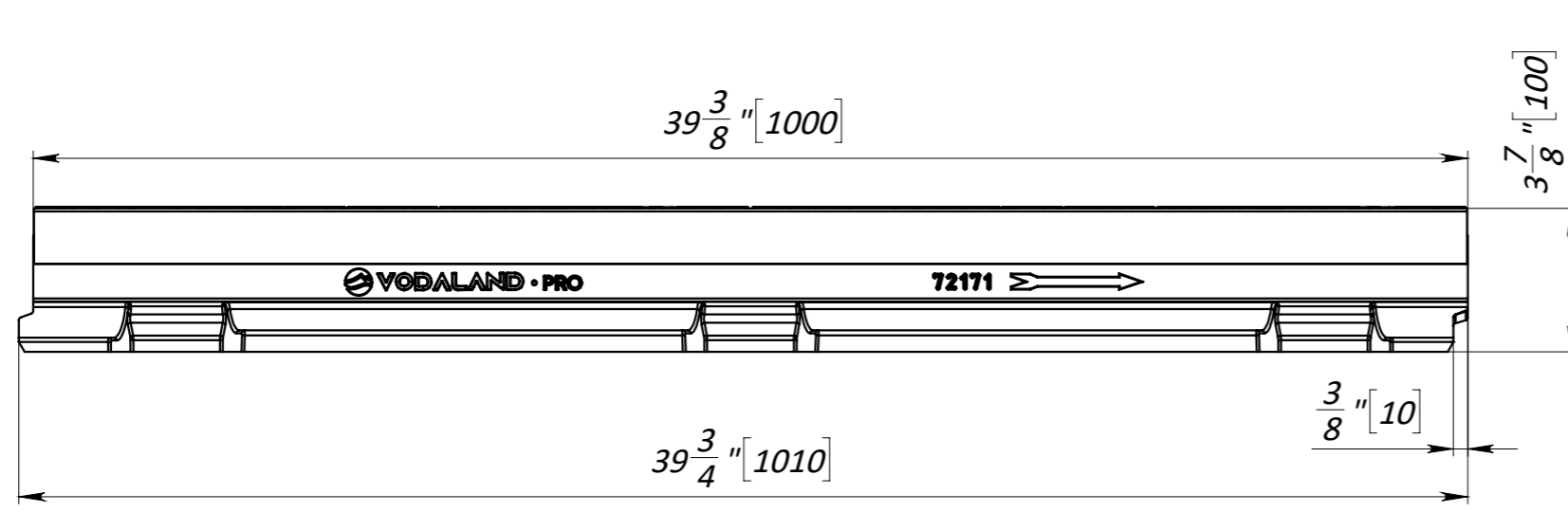
A3




1. Dimensions for reference, inch [mm]
2. Delivery and packaging are carried out in accordance with the terms of the contract
3. The manufacturer reserves the right, without notice to the consumer, to make changes to the design of the products for improvement of their technological and operational parameters, which will not affect the quality and properties of the product
4. Deviation of the actual weight of the nominal can be up to 10%.

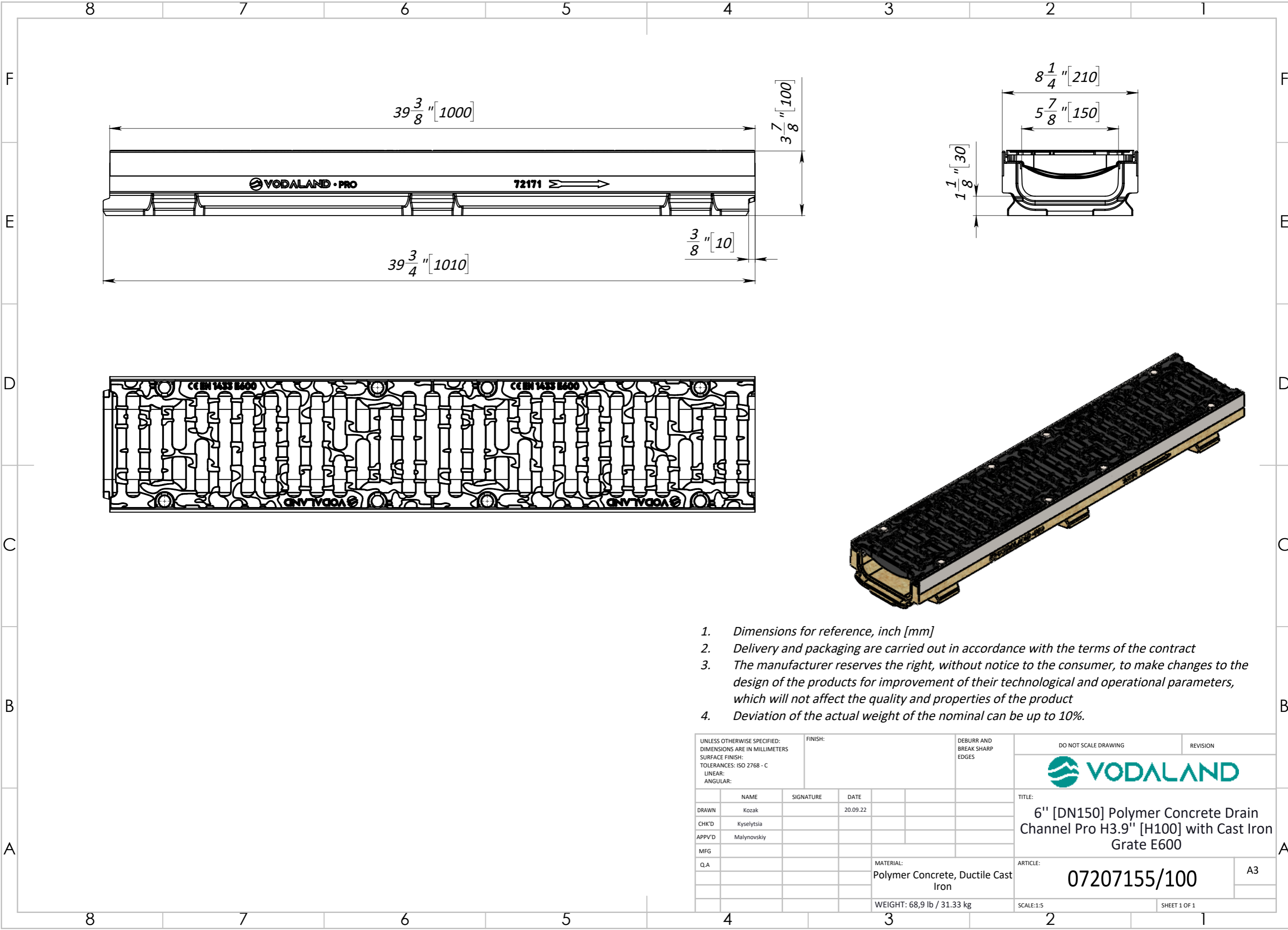
UNLESS OTHERWISE SPECIFIED: DIMENSIONS ARE IN MILLIMETERS SURFACE FINISH: TOLERANCES: ISO 2768 - C LINEAR: ANGULAR:		FINISH:	DEBURR AND BREAK SHARP EDGES	DO NOT SCALE DRAWING	REVISION
DRAWN: Kozak		SIGNATURE:	DATE: 20.09.22	 <b>TITLE:</b> 6" [DN150] Polymer Concrete Drain Channel Pro H12.2" [H310] with Cast Iron Grate E600 <b>ARTICLE:</b> 07207155/310	
CHK'D: Kyselytsia					
APPV'D: Malynovskiy					
MFG:					
Q.A:					
		MATERIAL: Polymer Concrete, Ductile Cast Iron		SCALE: 1:5	
		WEIGHT: 106,7 lb / 48.48 kg		SHEET 1 OF 1	

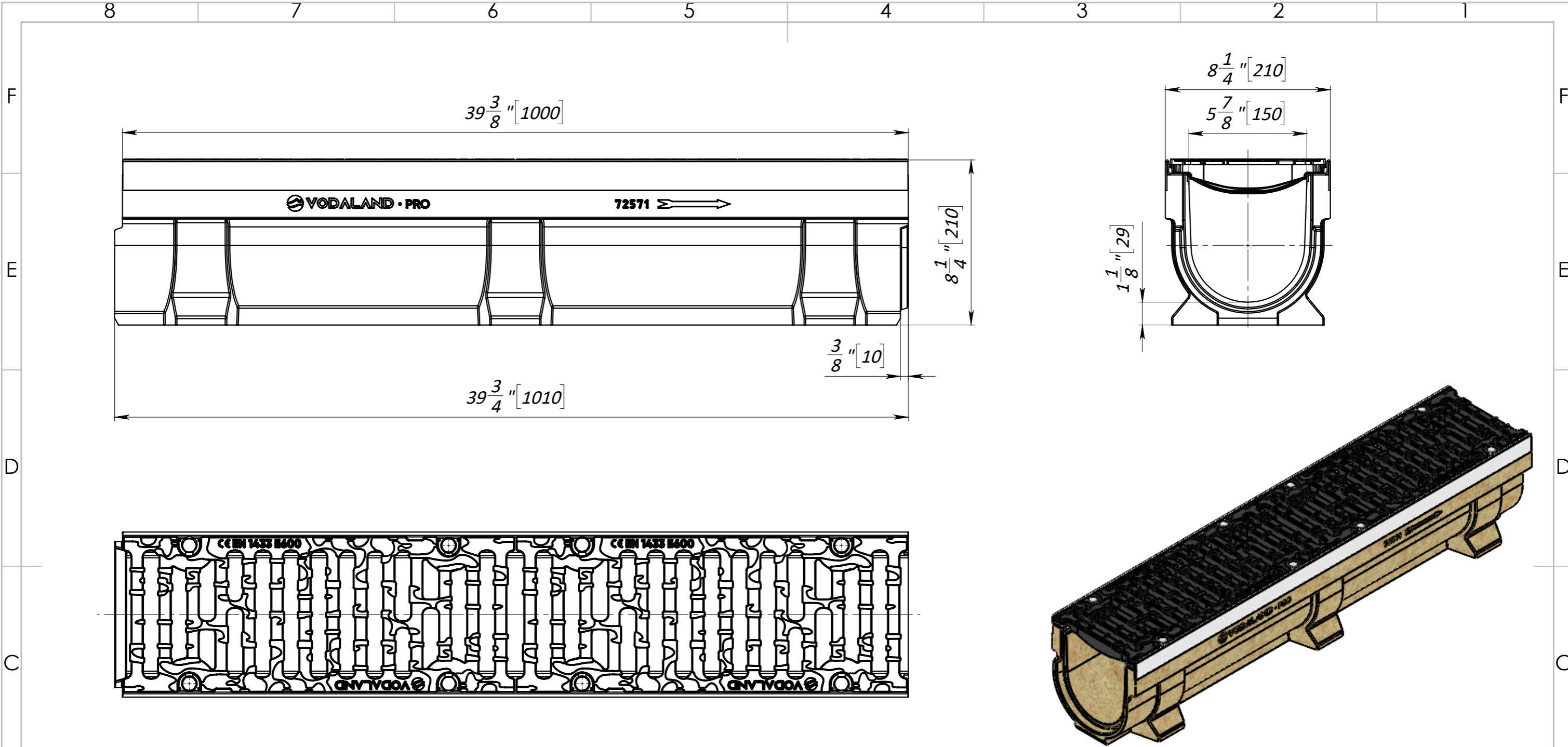
A3



1. Dimensions for reference, inch [mm]
2. Delivery and packaging are carried out in accordance with the terms of the contract
3. The manufacturer reserves the right, without notice to the consumer, to make changes to the design of the products for improvement of their technological and operational parameters, which will not affect the quality and properties of the product
4. Deviation of the actual weight of the nominal can be up to 10%.

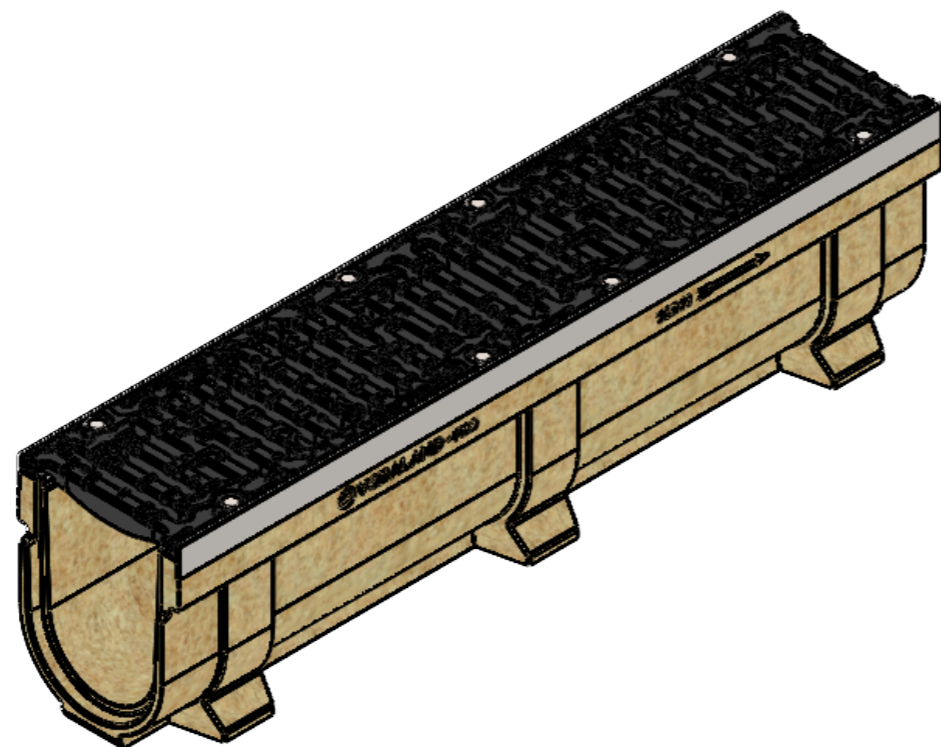
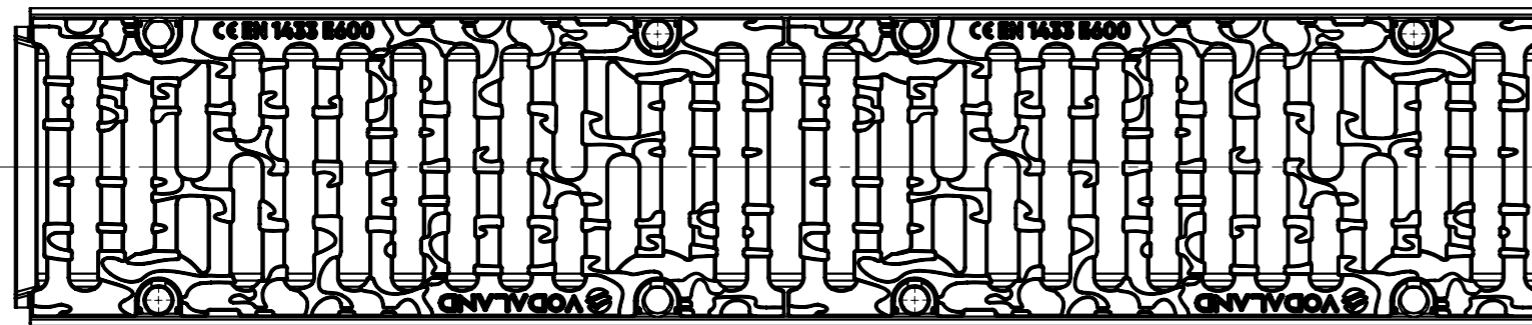
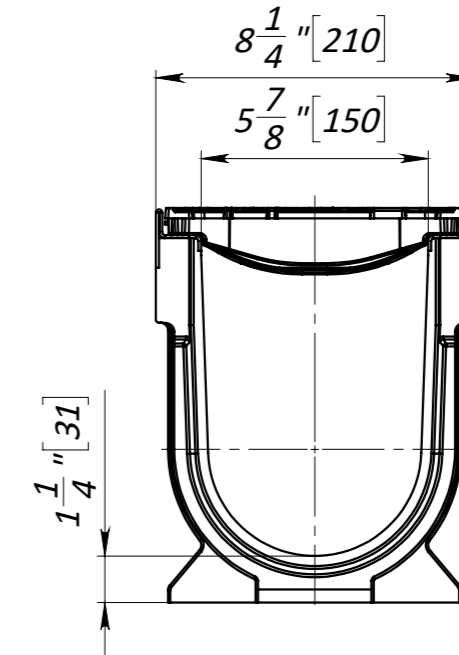
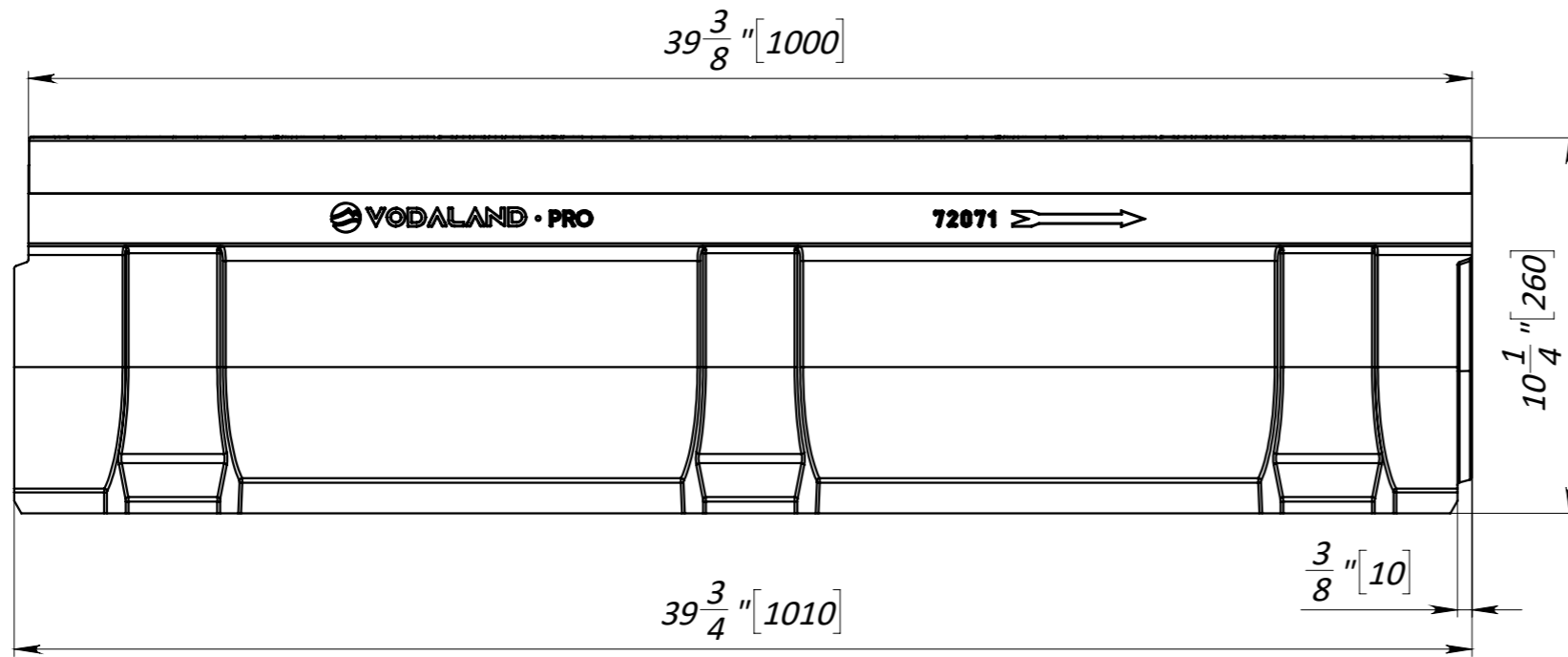
UNLESS OTHERWISE SPECIFIED: DIMENSIONS ARE IN MILLIMETERS SURFACE FINISH: TOLERANCES: ISO 2768 - C LINEAR: ANGULAR:			FINISH:		DEBURR AND BREAK SHARP EDGES		DO NOT SCALE DRAWING		REVISION	
									<b>TITLE:</b> 6" [DN150] Polymer Concrete Drain Channel Pro H3.9" [H100] with Cast Iron Grate E600	
							<b>MATERIAL:</b> Polymer Concrete, Ductile Cast Iron		<b>SCALE:</b> 1:5	
							<b>WEIGHT:</b> 68,9 lb / 31.33 kg		SHEET 1 OF 1	





1. Dimensions for reference, inch [mm]
2. Delivery and packaging are carried out in accordance with the terms of the contract
3. The manufacturer reserves the right, without notice to the consumer, to make changes to the design of the products for improvement of their technological and operational parameters, which will not affect the quality and properties of the product
4. Deviation of the actual weight of the nominal can be up to 10%.

UNLESS OTHERWISE SPECIFIED: DIMENSIONS ARE IN MILLIMETERS SURFACE FINISH: TOLERANCES: ISO 2768 - C LINEAR: ANGULAR:		FINISH:		DEBURR AND BREAK SHARP EDGES		DO NOT SCALE DRAWING		REVISION	
DRAWN		NAME		SIGNATURE		DATE		TITLE:	
CHK'D		Kozak				20.09.22		6" [DN150] Polymer Concrete Drain Channel Pro H8.3" [H210] with Cast Iron Grate E600	
APPV'D		Kyselytsia						ARTICLE:	
MFG		Malynovskiy						07207155/210	
Q.A						MATERIAL: Polymer Concrete, Ductile Cast Iron		A3	
						WEIGHT: 85,9 lb / 39.05 kg		SCALE: 1:5	
								SHEET 1 OF 1	



1. Dimensions for reference, inch [mm]
2. Delivery and packaging are carried out in accordance with the terms of the contract
3. The manufacturer reserves the right, without notice to the consumer, to make changes to the design of the products for improvement of their technological and operational parameters, which will not affect the quality and properties of the product
4. Deviation of the actual weight of the nominal can be up to 10%.

UNLESS OTHERWISE SPECIFIED: DIMENSIONS ARE IN MILLIMETERS SURFACE FINISH: TOLERANCES: ISO 2768 - C LINEAR: ANGULAR:			FINISH:		DEBURR AND BREAK SHARP EDGES		DO NOT SCALE DRAWING		REVISION		
DRAWN			NAME		SIGNATURE		DATE		TITLE:		
CHK'D			Kozak				20.09.22		6" [DN150] Polymer Concrete Drain Channel Pro H10.2" [H260] with Cast Iron Grate E600		
APPV'D			Kyselytsia						ARTICLE:		
MFG			Malynovskiy						07207155/260		
Q.A									A3		
							MATERIAL: Polymer Concrete, Ductile Cast Iron		SCALE:1:5		
							WEIGHT: 96 lb / 43.62 kg		SHEET 1 OF 1		