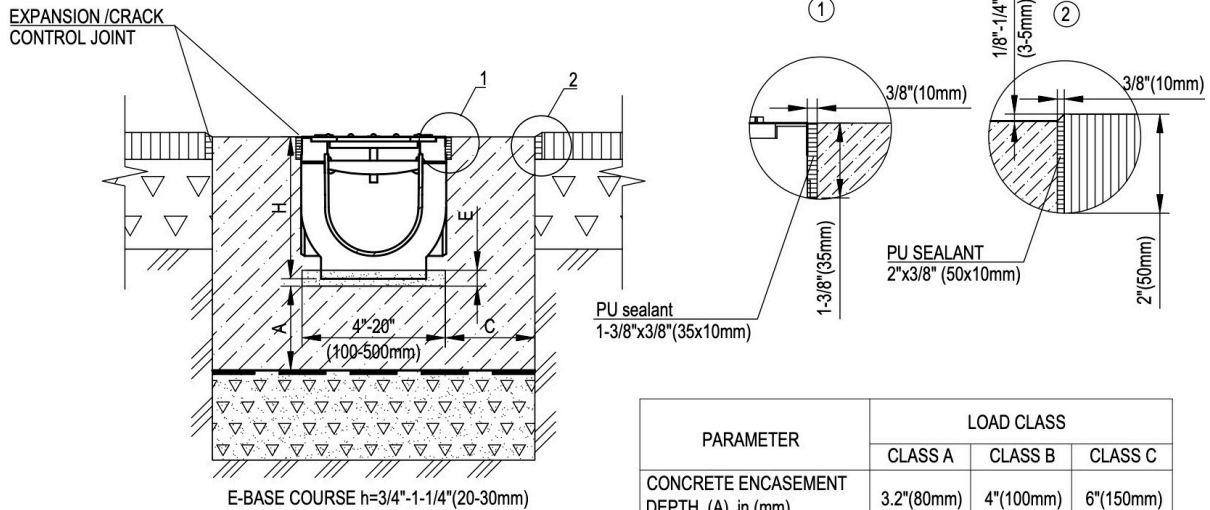


**6" (150mm) BASIC POLYMAX TRENCH DRAIN**



PARAMETER	LOAD CLASS		
	CLASS A	CLASS B	CLASS C
CONCRETE ENCASEMENT DEPTH (A), in (mm)	3.2"(80mm)	4"(100mm)	6"(150mm)
CONCRETE ENCASEMENT WIDTH (C), in (mm)	3.2"(80mm)	4"(100mm)	6"(150mm)

**NOTES:**

1. REFER TO STANDARTPARK CANADA WEBSITE FOR DETAILED INSTALLATION INSTRUCTIONS AND SCHEMES (CATALOGUES SECTION).
2. SPECIFIER IS RESPONSIBLE FOR CONCRETE ENCASEMENT AND REINFORCING BASED UPON APPLICATION AND LOCAL CODES.
3. EXPANSION AND CONTRACTION CONTROL JOINTS AND REINFORCEMENT ARE RECOMMENDED TO PROTECT CHANNEL AND CONCRETE SURROUND. ENGINEERING ADVICE MAY BE REQUIRED.
4. THE FINISHED LEVEL OF THE CONCRETE SURROUND MUST BE APPROX. 1/8" (3-5mm) ABOVE THE TOP OF THE CHANNEL EDGE.

**SPECIFICATION:** 6" BASIC POLYMAX TRENCH DRAIN SYSTEM SHALL BE 39.4" (1000mm) LONG AND THE NOMINAL CLEAR OPENING SHALL BE 6" (150mm) WITH 8.3" (210mm) OVERALL WIDTH. CHANNELS SHALL BE MANUFACTURED FROM UV STABILIZED 100% RECYCLED POLYPROPYLENE. UNITS SHALL HAVE A MALE-TO-FEMALE INTERLOCKING JOINTS THAT WILL NOT SEPARATE DURING THE INSTALLATION. CHANNELS SHALL HAVE A RADIUS SELF CLEANING BOTTOM WITH A MANNING'S COEFFICIENT OF 0.009 AND NEUTRAL 0% BUILT-IN SLOPE. EACH UNIT WILL BE PROVIDED WITH GRATE(S) FASTENED TO THE CHANNEL AND RATED LOAD CLASS ( ) PER EN1433 LOAD SPECIFICATION.

THE COMPLETE DRAINAGE SYSTEM SHALL BE BY STANDARTPARK CANADA INC. ANY DEVIATION OR PARTIAL SYSTEM DESIGN AND/OR IMPROPER INSTALLATION WILL VOID ANY AND ALL WARRANTIES PROVIDED BY STANDARTPARK CANADA INC.

**SPECIFY APPROPRIATE OPTIONS:**

**GRATE OPTIONS:**

- |                                   |                                |      |
|-----------------------------------|--------------------------------|------|
| <input type="checkbox"/> 222019.1 | GALVANIZED STEEL GRATE MESH    | A15  |
| <input type="checkbox"/> 222019.2 | GALVANIZED STEEL GRATE ADA     | A15  |
| <input type="checkbox"/> 22101    | GALVANIZED STEEL GRATE SLOTTED | A15  |
| <input type="checkbox"/> 22802    | PLASTIC GRATE                  | B125 |
| <input type="checkbox"/> 22801    | PLASTIC GRATE                  | A15  |
| <input type="checkbox"/> 22303    | DUCTILE CAST IRON GRATE        | C250 |
| <input type="checkbox"/> 22191    | GALVANIZED STEEL COVER         | A15  |

**ADDITIONAL OPTIONS:**

- |   |
|---|
| <input type="checkbox"/> 6" END CAP W/ OUTLET |
| <input type="checkbox"/> 6" END CAP           |
| <input type="checkbox"/> 6" MOUNTING BRACKET  |