

S'park 3 Nozzle

Primary Usage

Reference No.

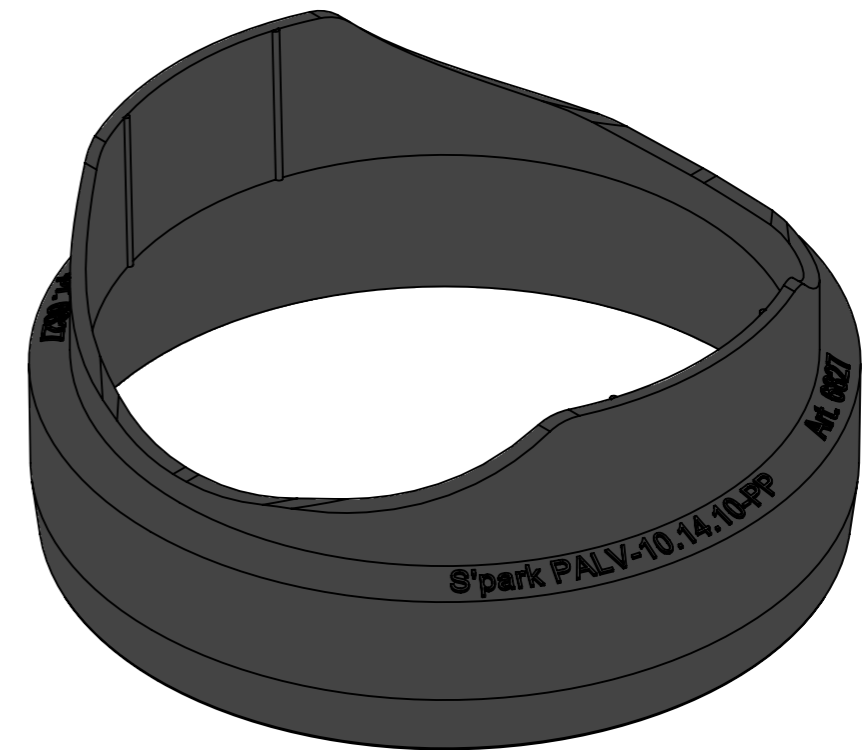
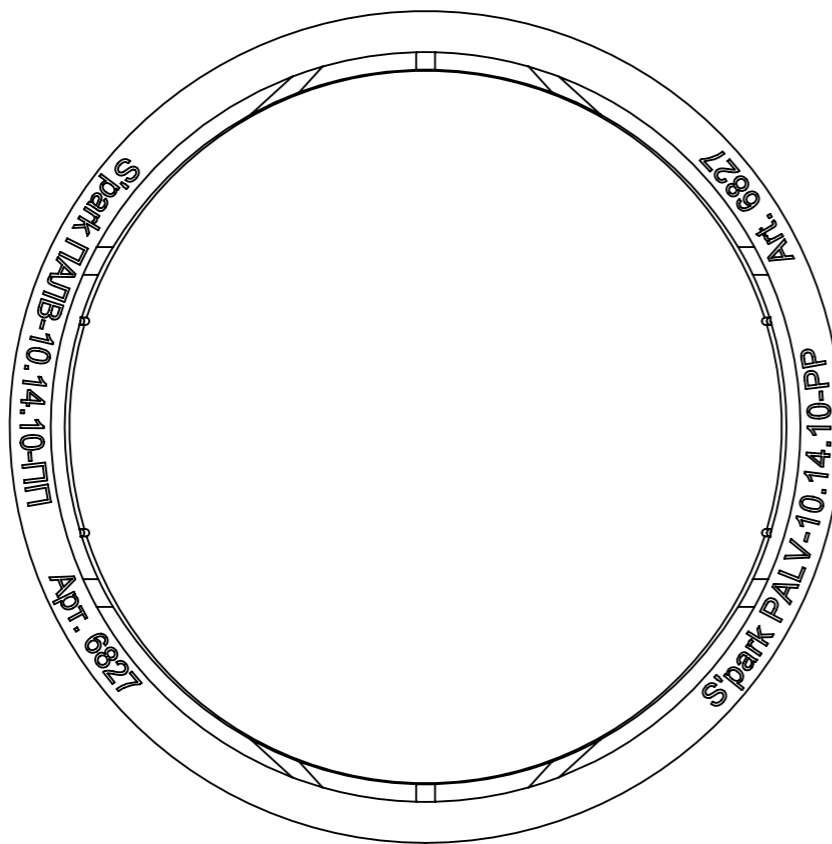
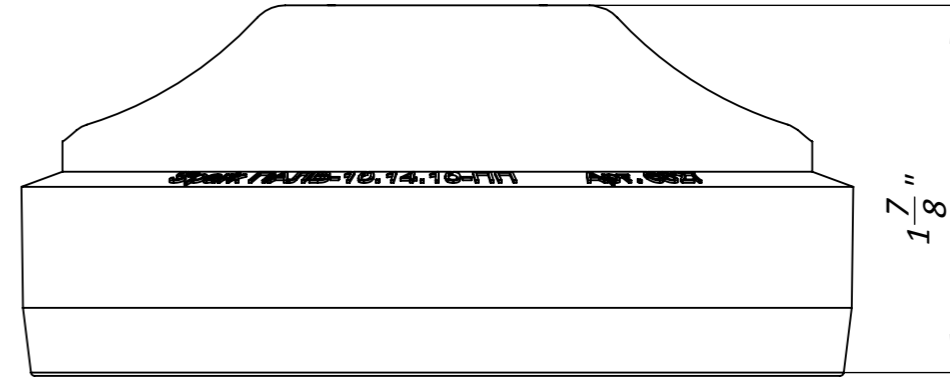
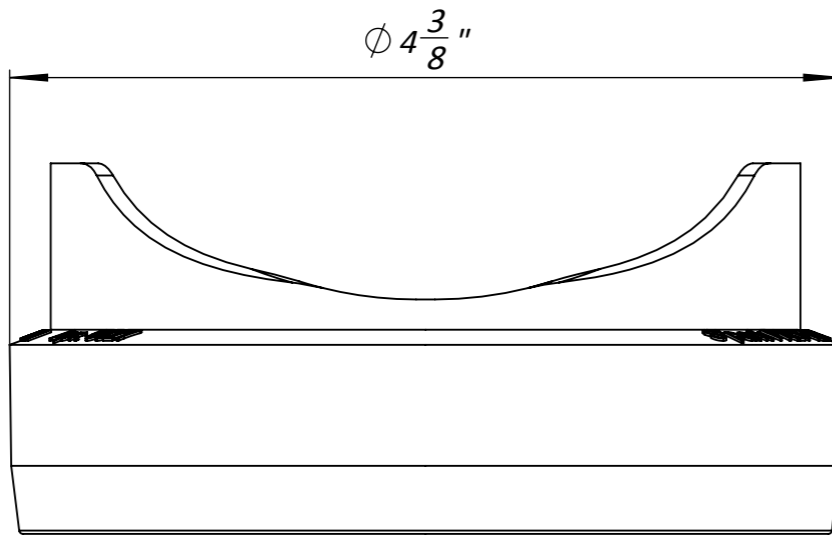
Sign. and date

Copy inv. No.

Repl. Inv. No.

Sign. and date

Orig. Inv. No.



Deviation of the actual weight of the nominal can be up to 10%

					Art. 6827			
					S'park 3 Nozzle			
Rev.	Sheet	Doc. No.	Sign.	Data	6827	Let.	Weight (lb)	Scale
				11.09.18			0.03	1:1
					Sheet		Sheets 1	
					Plastic			