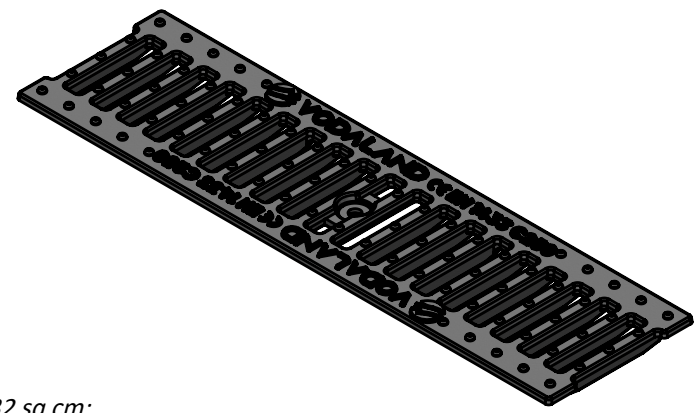
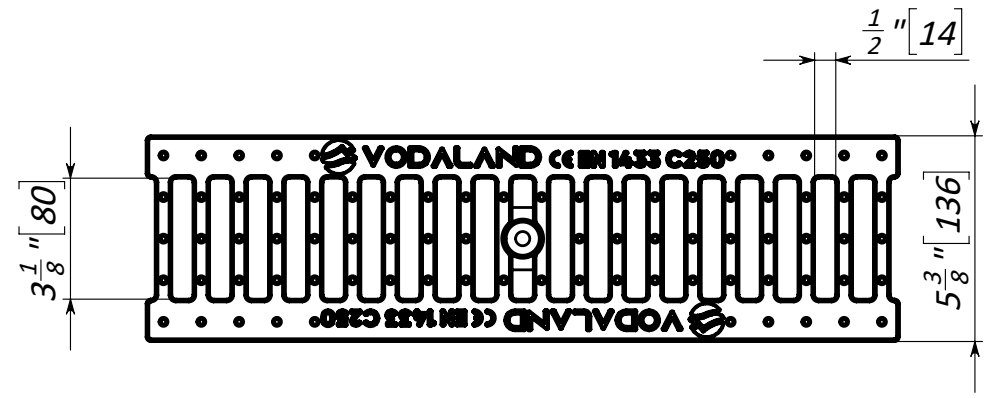
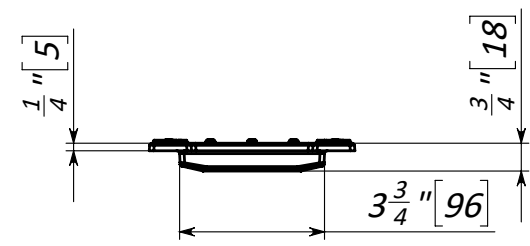
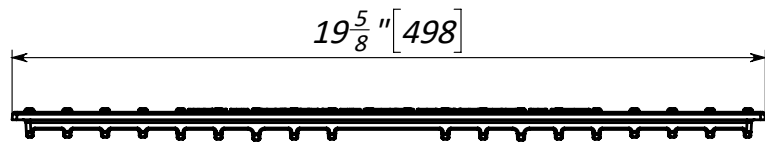


6 5 4 3 2 1



1. Dimensions for reference, inch [mm]
2. Area of water intake slotes 32.59 sq inch /210.32 sq cm;
3. Deviation of the actual weight of the nominal can be up to 10%

UNLESS OTHERWISE SPECIFIED: DIMENSIONS ARE IN MILLIMETERS SURFACE FINISH: TOLERANCES: ISO 2768-c LINEAR: ANGULAR:				FINISH:		DO NOT SCALE DRAWING		REVISION		
						TITLE: 4" Cast iron slotted anti-slip grate Base C250				
						Load class: C250				
						MATERIAL: Cast iron		Article: 20303		A4
						WEIGHT: 5.90 lb / 2.68 kg		SCALE:1:5		SHEET 1 OF 1

	NAME	SIGNATURE	DATE		
DRAWN	LMV		16.05.22		
CHK'D	LMK				
APPV'D					
MFG					
Q.A					

6 5 4 3 2 1

D  
C  
B  
A

D  
C  
B  
A