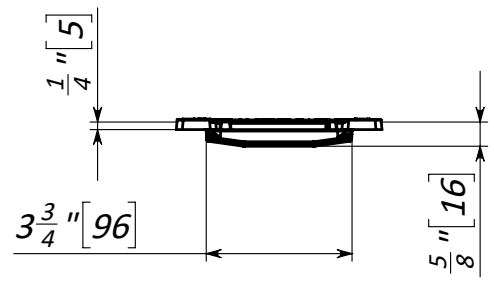
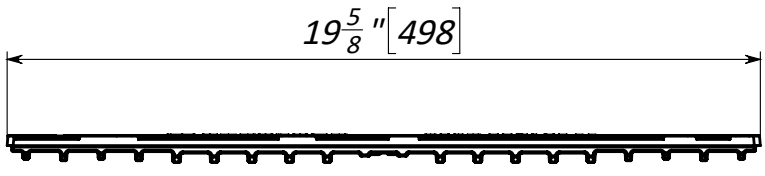


6 5 4 3 2 1

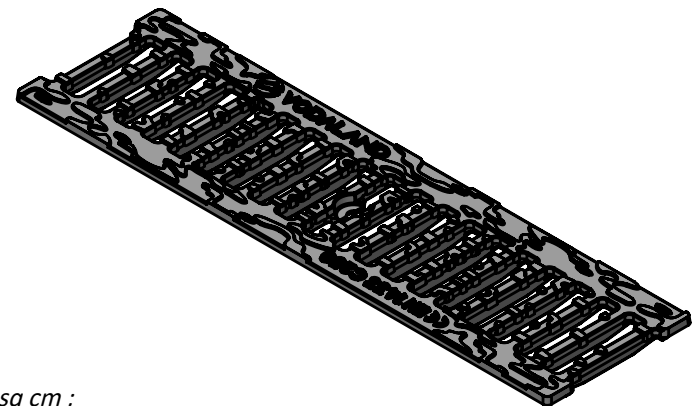
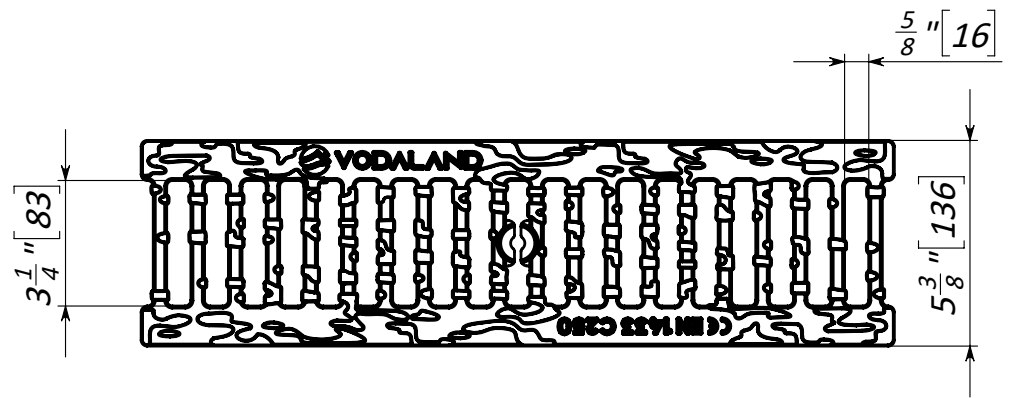
D

D



C

C



B

B

1. Dimensions for reference, inch [mm]
2. Area of water intake slots 39.93 sq inch | 257.66 sq cm ;
3. Deviation of the actual weight of the nominal can be up to 10%

A

A

UNLESS OTHERWISE SPECIFIED: DIMENSIONS ARE IN MILLIMETERS SURFACE FINISH: TOLERANCES: ISO 2768-c LINEAR: ANGULAR:				FINISH:		DO NOT SCALE DRAWING		REVISION	
						TITLE: 4" Cast iron slotted structural grate Base C250			
						Load class: C250			
				MATERIAL: Cast iron		Article: 2030311		A4	
				WEIGHT: 5.46 lb / 2.48 kg		SCALE: 1:5		SHEET 1 OF 1	

6 5 4 3 2 1