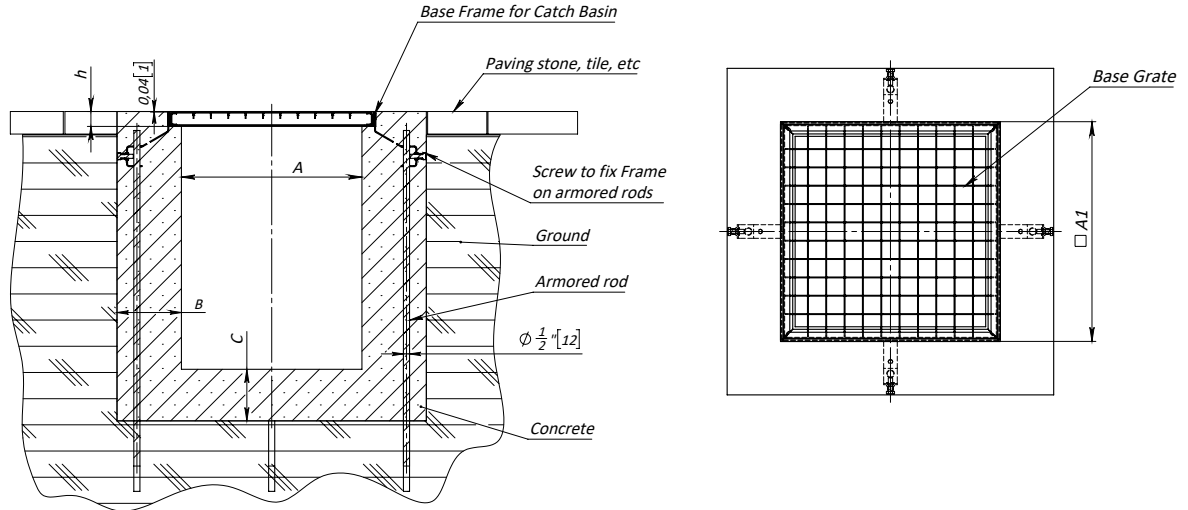


BASE 300-CB GRATE FRAME - LOAD CLASS A15 - C250
ENCLOSED PAVER PAVEMENT INSTALLATION

12" (300MM) CATCH BASIN GRATE



A	B	C	h	A1	Grate Type	Load Class
12" x 12"	4"	3"	1.125"	11.125"	12" x 12" BASE	A15 to C250

NOTES:

1. SPECIFIER IS RESPONSIBLE FOR CONCRETE ENCASEMENT AND REINFORCING BASED UPON APPLICATION AND LOCAL CODES.
2. EXPANSION AND CONTRACTION CONTROL JOINTS AND REINFORCEMENT ARE RECOMMENDED TO PROTECT GRATE FRAME AND CONCRETE SURROUND. ENGINEERING ADVICE MAY BE REQUIRED.
3. THIS INSTALLATION SCHEME IS A RECOMMENDATION. CONSULT WITH THE MANUFACTURER FOR INSTALLATION INSTRUCTIONS.
4. THE FINISHED LEVEL OF CONCRETE SURROUND SHOULD BE 1/8" - 3/16" (3-5mm) ABOVE THE TOP OF THE FRAME.

GENERAL: THE GRATE FRAME SHALL BE A VODALAND CANADA BASE 300 CB GRATE FRAME OR APPROVED EQUIVALENT.

CATCH BASIN: THE GRATE FRAME SHALL HAVE A SQUARE FOOTPRINT MEASURING 11.2 INCHES (282 MM) WITH A DEPTH OF 1.2 INCHES (28 MM). MATERIAL SHALL BE EITHER 304 STAINLESS STEEL OR GALVANIZED STEEL AS SPECIFIED. THE UNIT SHALL INCORPORATE FOUR INTEGRAL ANGLES AND FOUR EMBEDDED REINFORCING ELEMENTS TO SUPPORT CONCRETE ENCASEMENT. A SPECIFIED GRATE DESIGNED TO WITHSTAND AN EN1433 LOAD

THE COMPLETE DRAINAGE SYSTEM SHALL BE BY VODALAND. ANY DEVIATION OR PARTIAL SYSTEM DESIGN AND/OR IMPROPER INSTALLATION WILL VOID ANY AND ALL WARRANTIES PROVIDED BY VODALAND.

BASE 300-CB GRATE FRAME - LOAD CLASS A15 - C250

GRATE OPTIONS

12" (300MM) CATCH BASIN GRATE FRAME

	Name	Article	H, in	H, mm	W, in	W, mm	Load Class
	11x11 Plastic Cover (black)	3389	1.2	20	11.0	280	A15
	11x11 Plastic Cover (gray)	3389-GY	1.2	20	11.0	280	A15
	11x11 Plastic Grate (black)	3380	1.2	20	11.0	280	A15
	11x11 Plastic Grate (gray)	3380-GY	1.2	20	11.0	280	A15
	11x11 Galvanized Steel grate (mesh)	3320	1.0	26	11.0	280	A15
	11x11 Ductile cast iron grate (slotted)	3334	0.9	22	10.9	278	B125
	11x11 Downspout Guard	8370.9DSG	8	200	11.1	282	-
	11x11 Stainless steel grate (ADA/Heel proof)	335018	0.8	22	11.0	280	B125