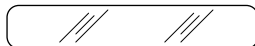


IN THE PACKAGE



SleekGrip-Essential X1



Optional Glass Auxiliary Film X1
(For glossy glass ONLY.
Not suitable for matte glass surface!)



Optional Silicone Adhesive X1



Additional 3M Adhesive X1

INSTALLING

1



Before installation, please make sure to clean the mounting surface.

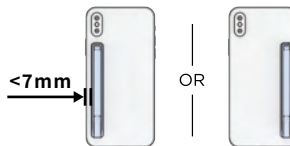
CAUTION

- SleekGrip CANNOT adhere well to fabric and matte glass surface.



- For glossy glass surface, must use the optional Glass Auxiliary Film before attaching SleekGrip.
- For silicone surface, must use the optional Silicone Adhesive before attaching SleekGrip.
- When removing SleekGrip, weak/fragile/delicate surface such as leather might be damaged. Use at your own discretion.

2



Stick SleekGrip on the left or right side of the phone according to your preference.

CAUTION

- If your phone is equipped with wireless charging capability, please stick SleekGrip less than 7mm from the phone edge to avoid blocking the wireless charging coil in the phone.
- Burn risk: Placing SleekGrip too close to the center of the phone (where the wireless charging coil is located) may cause SleekGrip to become hot during wireless charging.

3

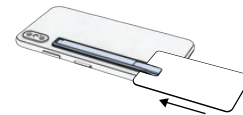


Adhesiveness:
50% of full strength in 20 min;
90% of full strength in 24 hours;
100% in 3 days.
Please wait at least one day before use.

ENJOY!

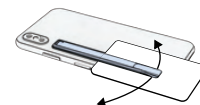
REMOVING

1



Use a plastic card to separate SleekGrip from the mounting surface. **DO NOT** use sharp metal such as knife as it can cause injury or damage to your phone.

2



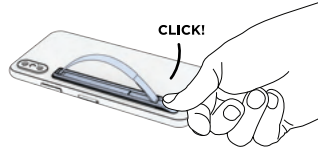
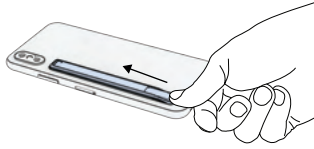
About half way through, rotate SleekGrip horizontally until it comes off the mounting surface completely. **DO NOT** pull up SleekGrip vertically. Doing so could damage the back panel of your phone.



Video
User
Guide

HOW TO USE

▶ OPEN



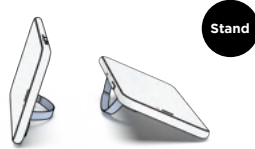
▶ CLOSE



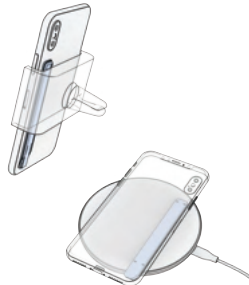
Don't press here

Press here

▶ USE



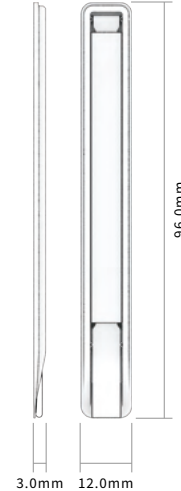
▶ COMPATIBLE WITH MOST CAR MOUNTS AND WIRELESS CHARGERS



SleekGrip **Essential**

SPECS

Materials :
ABS, Steel,
PU leather
Weight : 3.4g



WARRANTY

For warranty and return policy, please visit:
www.sleekstrip.com/return-policy-warranty

This warranty does not cover problems that result from abuse, accident, or misuse. It does not cover uses not in accordance with the instruction manual. It does not cover commercial use of the product. In no event shall iQOOL Design Products Inc. be liable for any direct, indirect, punitive, incidental, special consequential damages whatsoever arising out of or connected with the use or misuse of its products.

* Due to the variety of glass and silicone, We cannot guarantee 100% adhesion of the auxiliary patch to all glass and silicone materials. Please use with caution.

** Be sure to follow the instructions when installing SleekGrip. Wireless charging is also affected by the thickness of phone case and wireless charger's charging distance.

Designed by
© iQOOL Design Products Inc. Canada

Manufactured in China
Patent granted in the U.S., Canada and other countries.
SleekStrip® is a trademark of iQOOL Design Products Inc., registered in the U.S. and other countries.

www.SleekStrip.com

[@sleekstrip](https://www.facebook.com/sleekstrip)

[#sleekstripofficial](https://www.instagram.com/sleekstripofficial)

Customer Support
support@sleekstrip.com

Sales Inquiry
sales@sleekstrip.com