

Plush[®]

FALL/HOLIDAY 2021





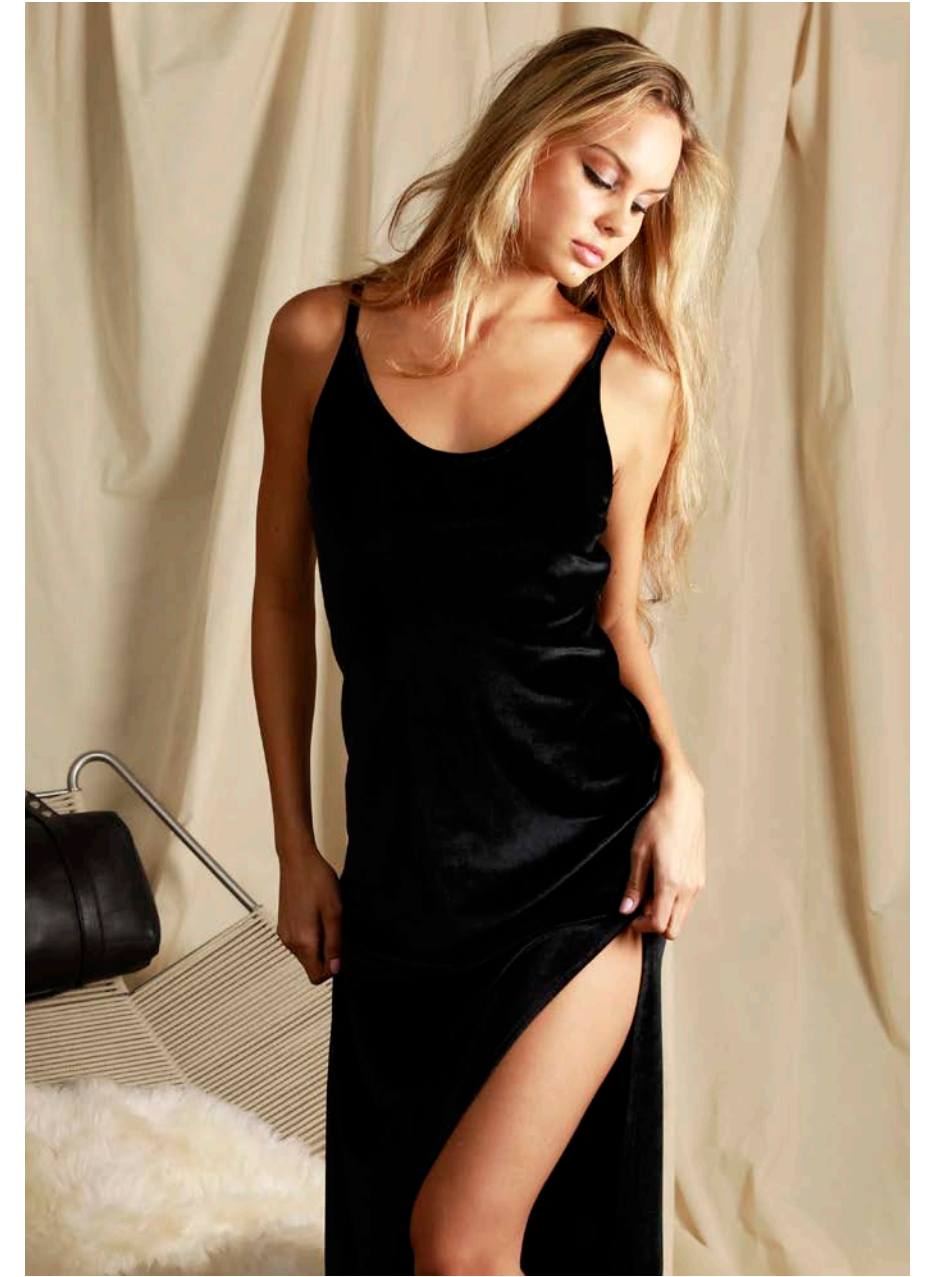
• #JK04K02BK • COZY KNIT CARDIGAN W/ BELT • BLACK •



• #SET11J02IBZB • RIBBED KNIT TANK + PANT SET • ZEBRA •



• #T14J02IBZB • RIBBED KNIT CARDIGAN • ZEBRA •
• #S03J02IBZB • RIBBED KNIT BOXER BRIEF • ZEBRA •



• #D03W04BK • VELVET MAXI DRESS • BLACK •



• #SET02J03HGIV • ULTRA SOFT JERSEY PAJAMA SET • HEATHER GREY / IVORY PIPING •



• #SET08J01IBZB • ULTRA SOFT JERSEY PAJAMA + SCRUNCHIE SET • ZEBRA •



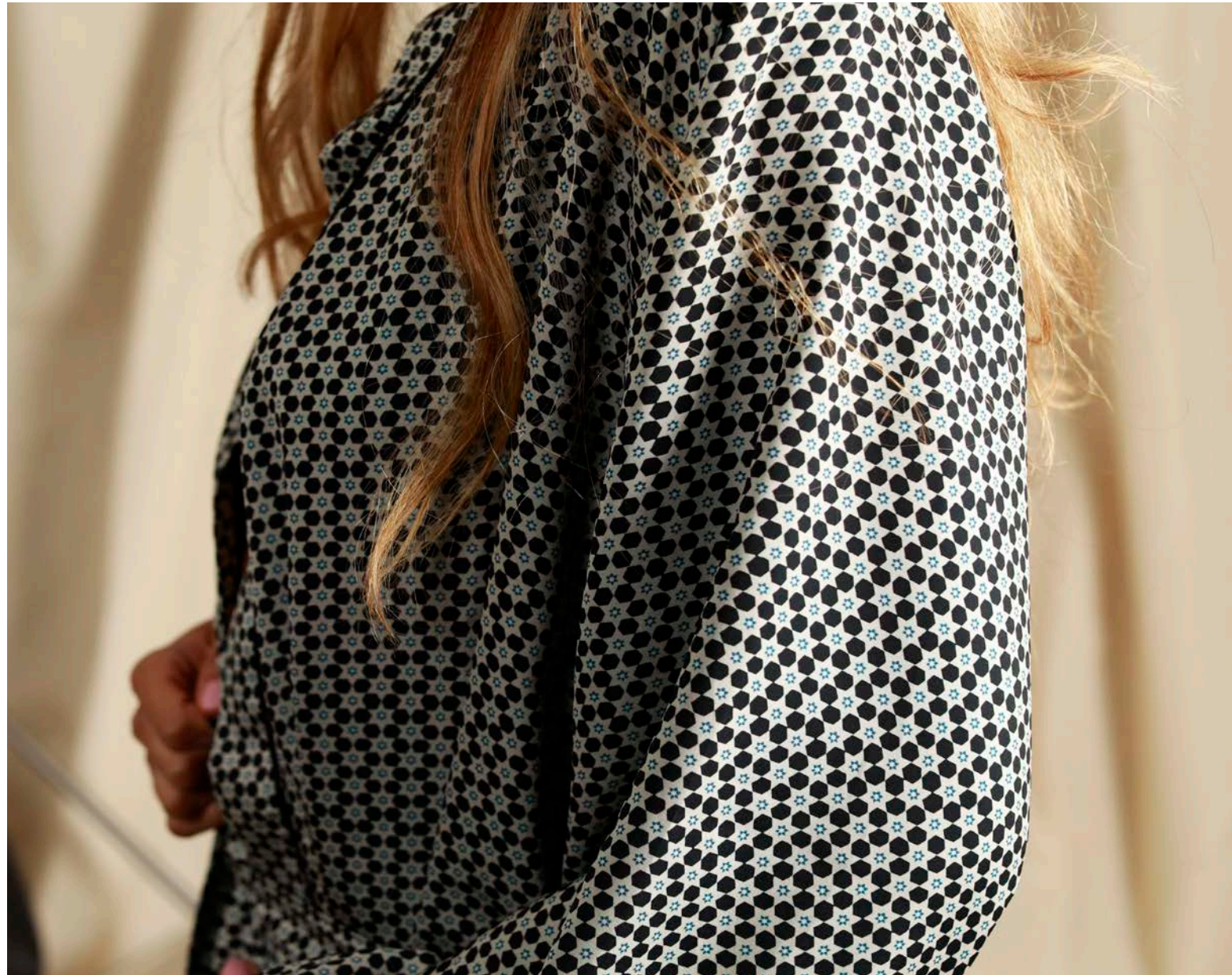
• #SET01W01BI • SILKY PAJAMA + EYEMASK SET • BLACK/IVORY •



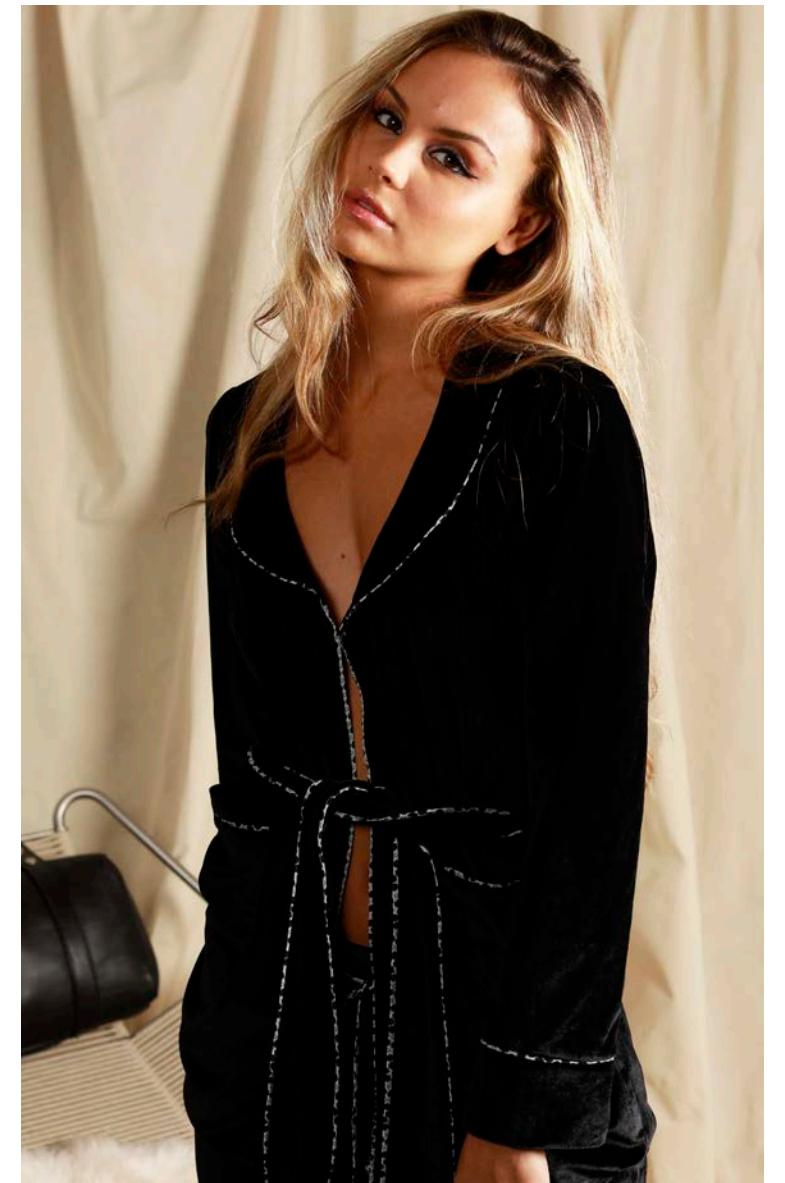
• #JK10K01BIZB • SHERPA MAXI COAT • ZEBRA •



• #SET03W01BSR • SILKY STAR PAJAMA + EYEMASK SET • BLACK STAR •



• #RB06W01BSR • SILKY BLOUSANT ROBE • BLACK STAR •



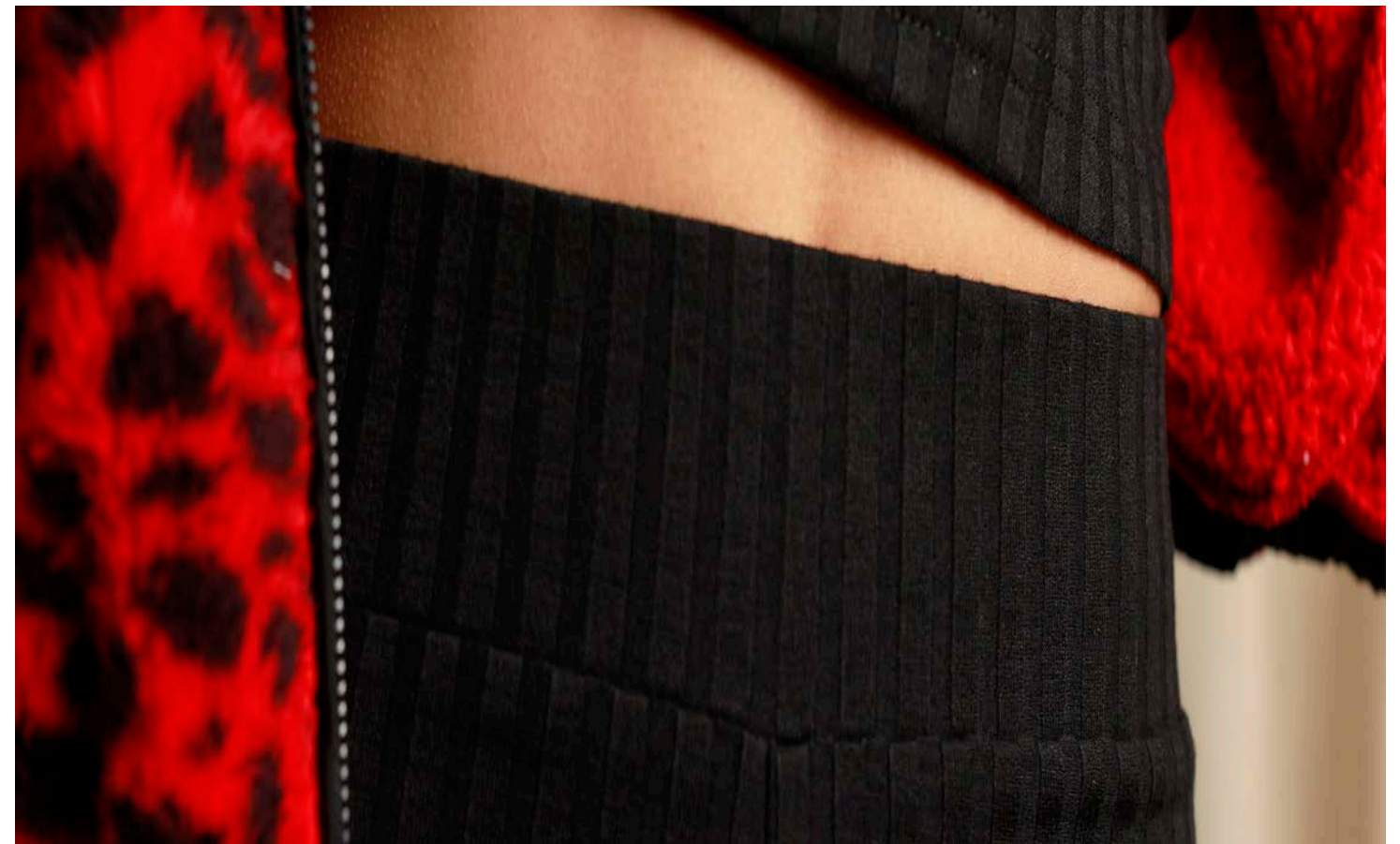
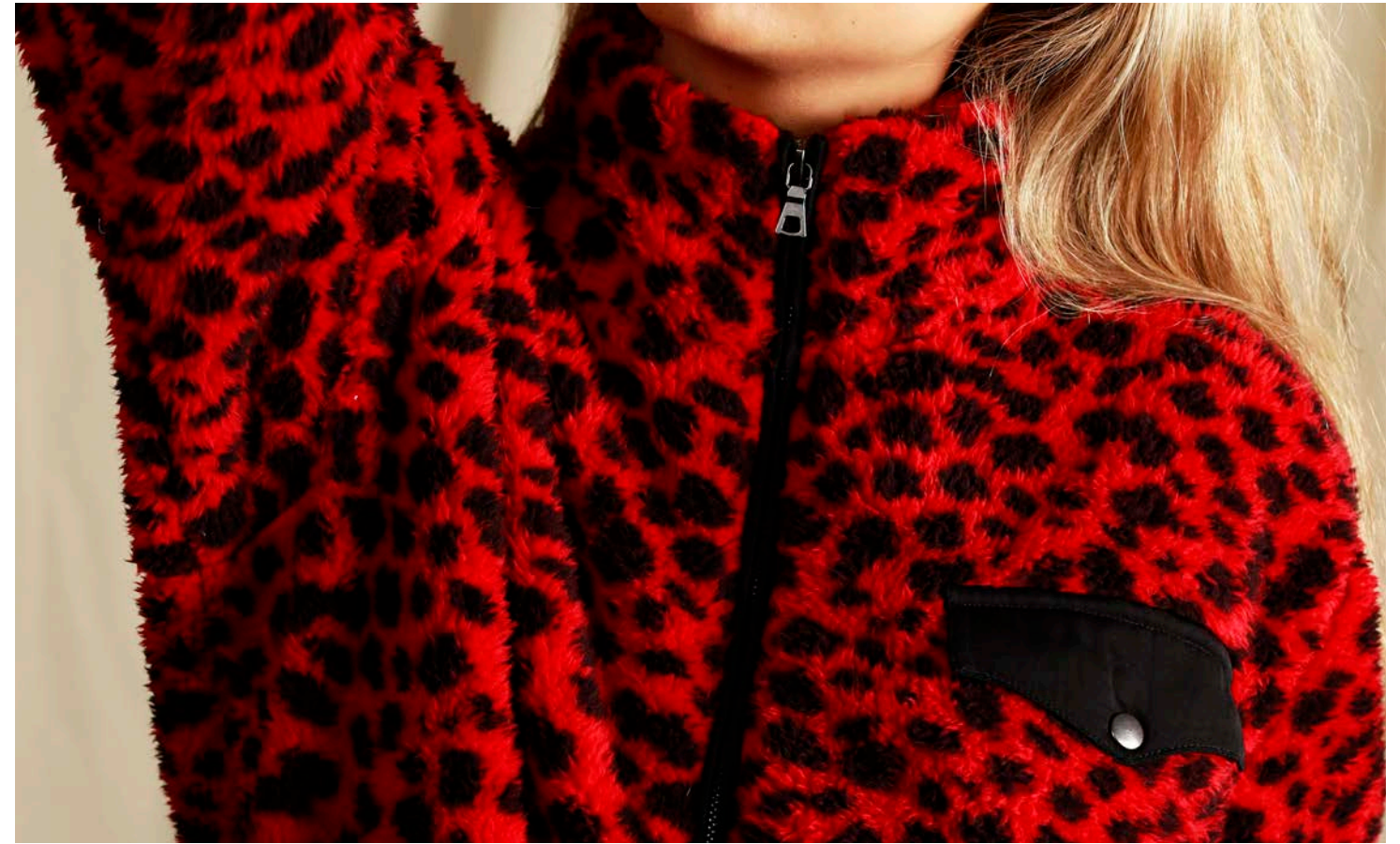
• #SET10W04BK • VELVET WRAP JACKET + CROPPED PANT PAJAMA SET • BLACK / BLACK STAR PIPING & LINING •



• #SET11K02BK • COZY KNIT TANK + PANT SET • BLACK •
• #RB05W04BK • VELVET KIMONO • BLACK/BLACK STAR LINING •



• #T15K02BK • COZY KNIT OVERSIZED CREW SWEATER + POCKETS • BLACK •
• #S06K02BK • COZY KNIT LOUNGE SHORT • BLACK •



• #JK05K01RLP • SHERPA LEOPARD ZIP UP JACKET • RED LEOPARD •



• #SET05J01RLP • ULTRA SOFT JERSEY PAJAMA + SRUNCHIE SET • RED LEOPARD •



• #SET14J05BK • MICRO THERMAL PAJAMA SET • BLACK •



• #P820SL • FLEECE-LINED SLIM JOGGER • HEATHER GREY •



• #SET02W01RDLP • SILKY PAJAMA + EYEMASK SET • RED LEOPARD •



• #RB01K01BIZB • SHERPA TEDDY ROBE • ZEBRA •



• #T14J02BK • RIBBED KNIT CARDIGAN • BLACK •
• #S03J02BK • RIBBED KNIT BOXER BRIEF • BLACK •



• #RB05W01GRPW • SILKY KIMONO • GREEN PATCHWORK •



• #SET04W01GRPW • SILKY BLAZER + CROP PANT + SCRUNCHIE PAJAMA SET • GREEN PATCHWORK •



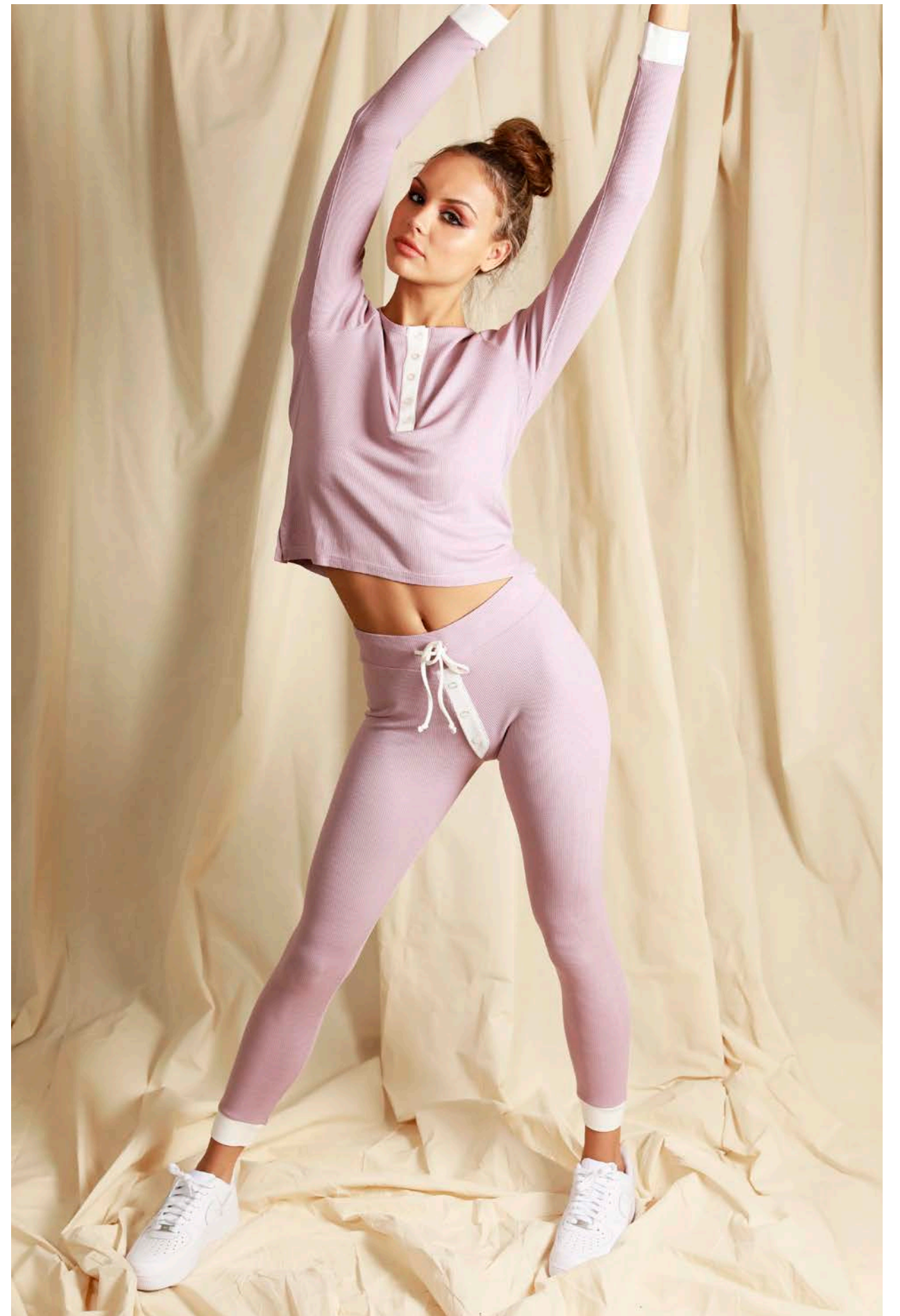
• #SET04W01GRPW • SILKY BLAZER + CROP PANT + SCRUNCHIE PAJAMA SET • GREEN PATCHWORK •



• #SET11JO2BK • RIBBED KNIT TANK + PANT SET • BLACK •



• #SET12J02MCH • RIBBED KNIT LONG SLEEVE TEE + LEGGING SET • CHARCOAL •



• #SET13J05DPIV • MICRO THERMAL HENLEY TOP PAJAMA SET • DUSTY ROSE / IVORY CONTRAST •



• #SET14J05HG • MICRO THERMAL PAJAMA SET • HEATHER GREY •



• #P820SL • FLEECE-LINED SLIM JOGGER • WHITE •



• #P07J06BKYW • WIDE LEG TRACK PANT W/ SNAPS • BLACK / YELLOW CONTRAST •



• #P312TK • TAPERED JOGGER W/ SNAPS • BLACK / IVORY / BLUE •



• #JK09W04BK • VELVET QUILTED JACKET • BLACK / BLACK STAR LINING •



• #JK06K01AGBK • SHERPA JACKET W/ REMOVABLE HOOD • ARMY GREEN / BLACK •



• #JK06K01IVTN • SHERPA JACKET W/ REMOVABLE HOOD • IVORY / TAN •



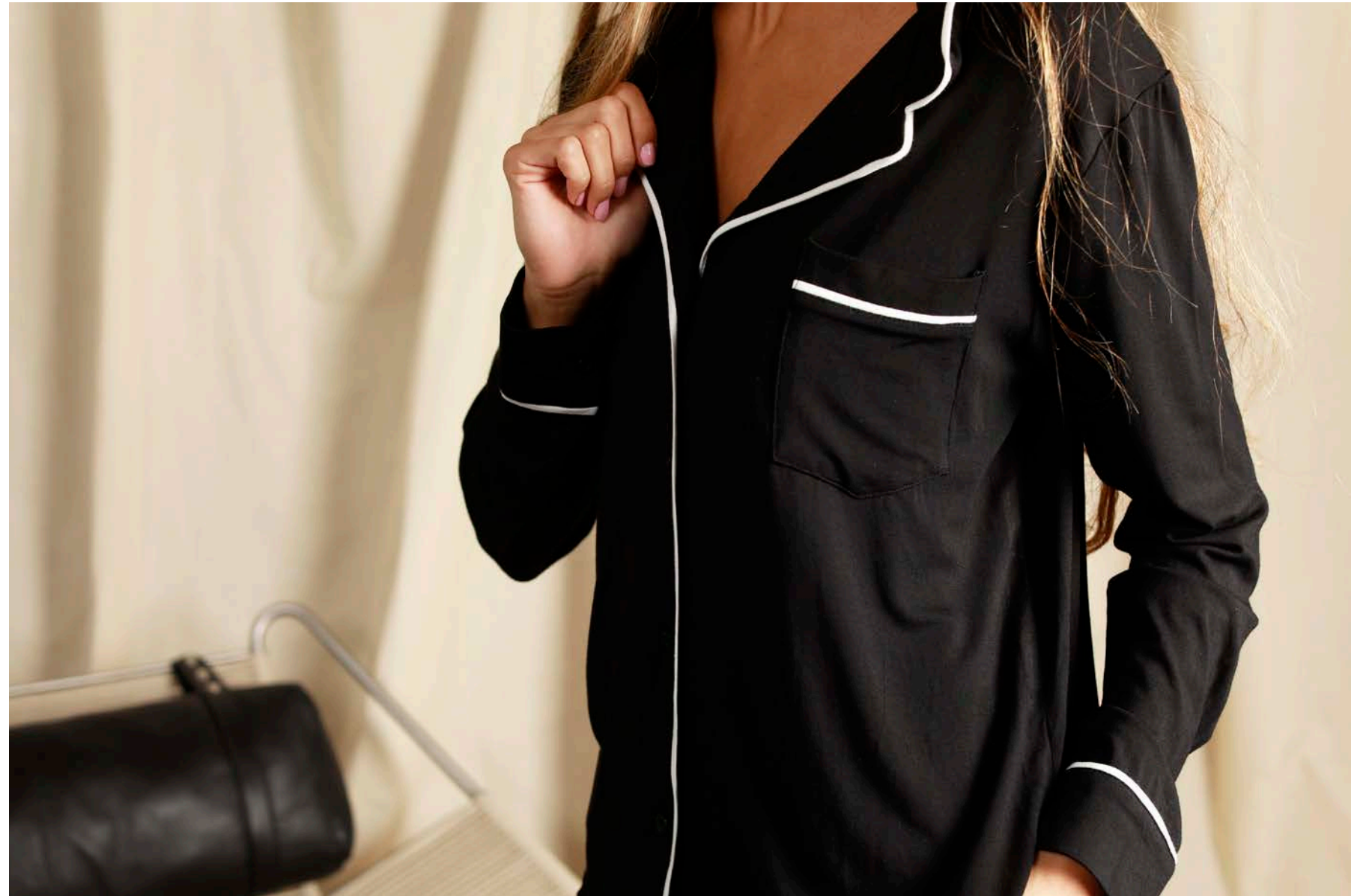
• #JK08W05TN • FAUX-FUR COAT • TAN / BLACK LINING •



• #JK07W05GR • FAUX-FUR PULL OVER W/ HOOD • GREEN / PATCHWORK LINING •



• #SET11K02BK • COZY KNIT TANK + PANT SET • BLACK •



• #SET01J03BI • ULTRA SOFT JERSEY PAJAMA SET • BLACK/IVORY PIPING •



• #SET12J02PK • RIBBED KNIT LONG SLEEVE TEE + LEGGING SET • PINK •



• #JK05K01BZB • SHERPA ZEBRA ZIP UP JACKET • ZEBRA •



• #SWT03W01IBZB • SILKY PAJAMA + EYEMASK SET • ZEBRA •

CORPORATE HQ

PLUSH

98 4TH STREET, #101

BROOKLYN, NY 11231

T: 844.384.5588 F: 646.395.9117

CUSTOMERSERVICE@PLUSH-APPAREL.COM

EAST

SUITESHOP SHOWROOM

265 CANAL STREET #601

NEW YORK, NY 10013

T: 212.334.8006 F: 212.334.8008

STEPHANIE@SUITESHOPNYC.COM

WEST

ROOM 4 AGENCY

860 S. LOS ANGELES STREET #407

LOS ANGELES, CA 90014

T: 213.627.6664 F: 213.622.2368

JEANNIE@ROOM4AGENCY.COM

@PLUSHAPPAREL
WWW.PLUSH-APPAREL.COM

• #SET09W011BZB • SILKY PAJAMA + EYEMASK SET • ZEBRA •