

## Product Description

Every aspect of LANAI Premium Plank Decking has been designed to have the look of hardwood flooring and engineered to withstand the harsh exterior conditions and to last a lifetime.

Our LIFECORE and LIFECAP technology ensure premium performance while feeling cool and comfortable to bare feet. LANAI uses only 100% pure PVC, highly resistant to scratching, slipping, staining, heat & UV, warping, and any waste is 100% recyclable.

This technology is combined into an easy-to-install system with completely hidden fasteners for an unbelievable deck experience from start to finish.

It is recommended that LANAI be installed on a 12" framed wood system but is also compatible with standard 16" framed wood systems. Whether it is a residential, commercial, or industrial application, our products have been engineered to eliminate the need for any additional structural or foundational support.

## Materials

PURE PVC CORE  
PROPRIETARY CAPPING

## Limitations

LANAI can be installed in direct contact with the ground without any effect to the finish or performance. However, ground movement could potentially cause issues.

We have no testing data to support use underwater.

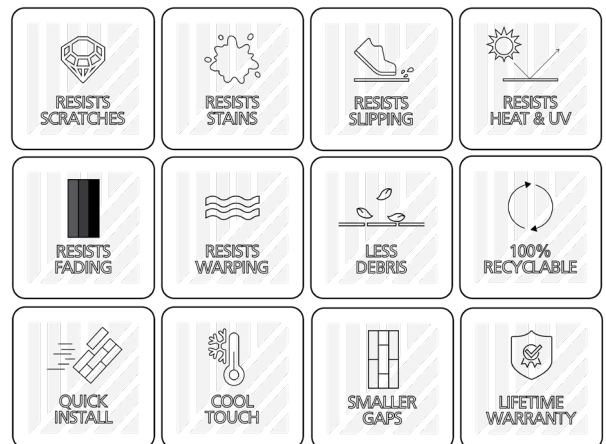
All LANAI products have been designed for deck installation only. Special care is also recommended when installing in a space where a lawn trimmer or a snow blower can come in contact with the product.

## Applications

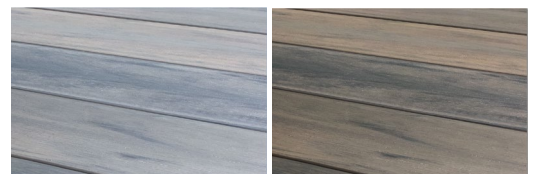
**Exterior decks:** Outdoor framed decks.

**Exterior Walls:** Outdoor facades, walls, ceilings, accent features and other non-load bearing surfaces

## Advantages

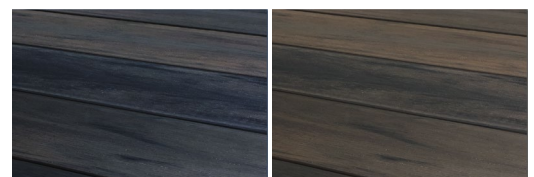


## Coastal Collection



BEACH WOOD

SUNSET PALM



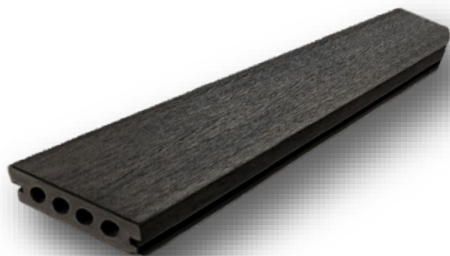
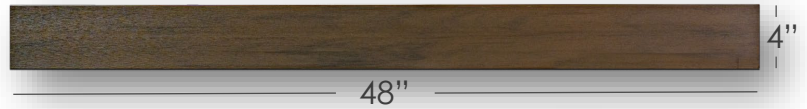
BLACK SAND

DARK KONA

## Coastal Collection



### Products:



DECK PLANK  
(4" x 1" x 48")



DECK NOSING  
(3" x 1" x 48")



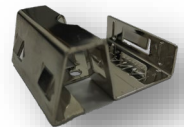
DECK FASCIA  
(12" x 3/8" x 48")



DECK RISER  
(7 1/4" x 1/4" x 48")



HIDDEN PLANK  
FASTENER



HIDDEN NOSING  
FASTENER

**Product Specifications:**

**DECK PLANK**



PRODUCT		LENGTH	WIDTH	HEIGHT	WEIGHT	
	LAN-PLK-BW	48"	4"	1"	5.15lbs	
	LAN-PLK-SP					
	LAN-PLK-DK					
	LAN-PLK-BS					

**NARROW PLANK**

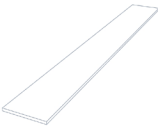

PRODUCT		LENGTH	WIDTH	HEIGHT	WEIGHT	
	LAN-NARPLK-BW	48"	2"	1"	2.1lbs	
	LAN-NARPLK-SP					
	LAN-NARPLK-DK					
	LAN-NARPLK-BS					

NO LONGER AVAILABLE

**DECK NOSING**

PRODUCT		LENGTH	WIDTH	HEIGHT	WEIGHT	
	LAN-NOS-BW	48"	2.95"	1.1"	3.1lbs	
	LAN-NOS-SP					
	LAN-NOS-DK					
	LAN-NOS-BS					

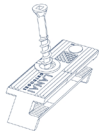
**DECK RISER**

PRODUCT		LENGTH	WIDTH	HEIGHT	WEIGHT	
	LAN-RSR-BW	48"	7.25"	0.4"	3lb	
	LAN-RSR-SP					
	LAN-RSR-DK					
	LAN-RSR-BS					

**DECK FASCIA**

PRODUCT		LENGTH	WIDTH	HEIGHT	WEIGHT	
	LAN-FAS-BW	48"	12"	0.4"	4.85lb	
	LAN-FAS-SP					
	LAN-FAS-DK					
	LAN-FAS-BS					

**Product Specifications cont'd:**

HIDDEN PLANK FASTENER						
PRODUCT	LENGTH	WIDTH	HEIGHT	WEIGHT		
 LAN-PLK-FAST	0.8"	1.65"	0.74"	BOX 1lb		
HIDDEN NOSING FASTENER						
PRODUCT	LENGTH	WIDTH	HEIGHT	WEIGHT		
 LAN-NOS-FAST	2"	1.65"	0.79"	BOX 2.25lb		

**Box and Pallet Dimensions**

PRODUCT	PIECES	BOX LENGTH	BOX WIDTH	BOX HEIGHT	BOX WEIGHT
DECK PLANKS	8	48"	8"	4"	42 lbs.
DECK NOSING	4	48"	6.25"	2.5"	13 lbs.
DECK RISER	4	48"	7.25"	1.5"	12 lbs.
DECK FASCIA	4	48"	12"	1.75"	20 lbs.
HIDDEN PLANK FASTENER	45	6"	6"	3"	1 lb.
HIDDEN NOSING FASTENER	45	6"	6"	3"	2.25 lbs.
DECK PLANK PALLET	50 Bundles	50"	40"	44"	2050 lbs.

## CARE & CLEANING

These Care & Cleaning guidelines will not cover every scenario possible. If you need additional information, or still have questions about care and cleaning of LANAI Premium Plank Decking, email [hello@lanaioutdoors.com](mailto:hello@lanaioutdoors.com).

Because of the specially formulated capping used, LANAI Premium Plank Decking products are typically easily cleaned with water and a soft brush. Wherever possible, do not use anything rough or abrasive, any harsh chemicals, or anything acidic to clean. This could potentially damage the surface. Some tougher debris/stains can be eliminated with water, a soft bristle brush, and even some less harsh cleaning agents. Always try on a small piece or an inconspicuous area first to ensure the procedure is working, and to check for color fastness.

### Spot Cleaning w/ Water (and Soap)

Whenever possible, use only water, water with a soft-bristled brush, or water with a soft-bristled brush and mild soap. Work in smaller, manageable sections to ensure that the area is thoroughly rinsed before moving onto the next section and do not let any type of soap dry on the Deck Planks. It is important that you have a clean and abundant water source for rinsing (hose or power washer).

Avoid cleaning on very hot days or in direct sunlight as this will cause the surface to dry faster, potentially leaving soap residue.

### Cleaning Agents

If the water/brush/soap technique is not enough, and you plan on using a cleaning agent, please read the manufacturer directions carefully. Most cleaning agents can cause permanent damage to many surfaces. Whenever possible, please first test any cleaning product on a small piece of LANAI. If not possible, test a small area in an inconspicuous spot of the deck.

Note that composite deck cleaners should not be used with LANAI Premium Plank Decking, as these Planks do not contain wood composite materials.

Always work in smaller, manageable sections. Ensure that the area is thoroughly rinsed before moving onto the next section and do not let any type of cleaning agent dry on the Deck Planks.

Avoid cleaning on very hot days or in direct sunlight, as this will cause the surface to dry faster and potentially dry the cleaning agent. If the cleaning agent dries or is not thoroughly rinsed it could cause a white surface film that must be cleaned again. In no circumstance shall cleaners containing ketones or ether, abrasive cleaners, or polish be used.

### Regular Maintenance Cleaning

Environmental factors from pollens, grass, dirt, debris, tree/plant resins, and constant moisture can result in an unwanted coating on the Deck Planks. Usual maintenance cleaning is recommended and may be done using only water with a broom or brush, or with a mild (low pH) soap.

### Brushes

Using the correct brush is very important as certain types of brushes can cause damage to any decking product. We recommend using a soft nylon bristle deck brush, which can be found at most retail home centers or online.

### Power Washing

Power washers should only be used for light cleaning and rinsing. LANAI recommends a maximum pressure of 1500psi with a fan tip nozzle.

### Things to Avoid

Rubber-backed mats, pool toys, tarps, or any non-porous material should be kept off your deck as they may cause discoloration of the Deck Planks. Avoid the use of sunscreen or insect repellent as they may contain certain chemicals that may cause discoloration of the Deck Planks. Avoid the use of metal shovels to remove ice or snow as they can scratch the Deck Planks.