

# hourwall

DESIGNER PANELS BY INSTONE

## barnWOOD Installation

### IMPORTANT

The following installation instructions must be followed for warranty purposes and for optimal performance. Hourwall does not install panels or have control over the installation of the panels, therefore these Installation Instructions are to be used as guidelines. Hourwall barnWOOD panels are for inside (interior) use only.

It is the responsibility of the installer to ensure all Hourwall products are installed in accordance with the Hourwall Installation Instructions. InStone assumes no liability for improper installation or personal injury resulting from proper or improper use or installation.

### SAFETY FIRST

The operator of any power tools or other tools should be skilled and familiar with the correct use of each tool. Proper safety gear must be worn at all times.

### BUILDING CODE

Follow local Building Codes when applying Hourwall. Hourwall products are for interior use only. Exterior use may result in negative effects to the finish. It is the responsibility of the installer to ensure that applicable building codes are met or exceeded.



### PRODUCT COLORING:

Please ensure, wherever possible, that the production dates on all product being installed side-by-side are the same or compatible. This will help ensure consistent coloring. Most of the time product from different dates will match up, but the installer should check this before installing. Also, there is the possibility for a panel to be slightly off-colored in a batch. Again, the installer should check all panels match before installing.

### RECOMMENDED TOOLS:

Miter Saw and/or Table Saw  
Pencil  
Metal Square / Ruler  
Safety Glasses

Drill  
Level  
Drywall Saw  
Earplugs

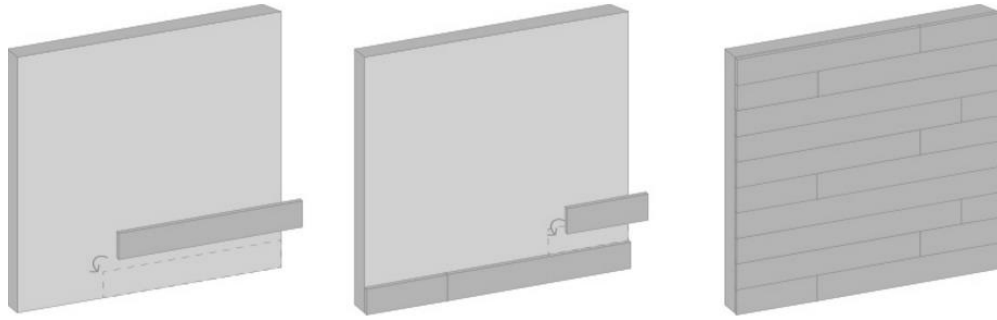
Measuring Tape  
10 oz. Caulking Gun  
Utility Knife  
Dust Mask



For more information, please visit our website or contact us:

[www.hourwall.com](http://www.hourwall.com) \* Toll Free at 1-877-477-4373 \* Email at [info@instoneproducts.ca](mailto:info@instoneproducts.ca)

# barnWOOD Installation



**1. MEASURE and MARK:** Products should be measured and marked from the backside. Using a measuring tape, mark the backside with a pencil or marker, and then use a straight edge to mark a cutting line.

**2. CUT:** The panels are easiest cut from the flat backside. Use a hand saw or miter saw to make the cut. For cutting panels lengthwise, a table saw is recommended for straighter cuts. To cut outlet and fixture holes, make markings on the backside of the panel, then use a hole-saw or high-speed drill to cut the opening. For precise cuts or trimming, use a utility knife or drywall saw.

**3. FASTEN:** Fasten product to drywall or wood substrate using brad nails or 2" drywall screws (must penetrate wood at least 1"). If Adhesive is being used, the panels may need to be roughed up on the back for proper adhesion. Before installing, the wall should first be measured and panels laid out. A level should to ensure each row is level.

It is ideal to start from the right side as the ship lap is on the left side of the panels. Fit the first panel flush against the wall or starting point, and work to the left from there. The final piece will need to be cut to the necessary length. The top row will also need to be cut to the necessary height so the panel fits flush with the ceiling or top of the wall.

1. Drywall Screws (recommended) - apply screws roughly every 8 inches, into the top and side shiplaps (the adjoining panel will cover and hide). You may also need apply screws into the 4 face circles on the panel. In some cases where the top or side has been cut off, all screws must be applied directly into the 4 face circles of the panels. Paintable caulking should be used to cover screw holes, and can be painted with the matching barnWOOD Paint Kit.
2. Brad Nails – nail into inconspicuous spots (existing indents, the 4 face circles, top/side shiplaps). This is a faster installation method, but may not have as strong a hold. Adhesive can be used in conjunction with brad nails.
3. Adhesive - we recommend a heavy-duty construction adhesive like TiteGrab Adhesive or Gorilla Glue. The panels may need to be roughed up on the back.

## ADHESIVE

Hourwall recommends high tack/grab Heavy Duty Construction Adhesive. All surface areas must be clean, dry and free of oily and loose materials. It is recommended to scuff or roughen the back of the panels prior to application. A file, rasp, or sandpaper can be used for this.

## APPLICATION OVER CONCRETE/BRICK

Hourwall can be applied over concrete or brick according to the standard instructions above, with a couple of modifications. A pilot hole can be drilled into the concrete with a masonry bit, and a special masonry screw should be used to fasten the product. In some cases, a wood or masonry screw can be applied directly into the concrete without pre-drilling a pilot hole.

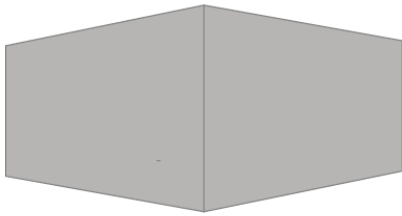
A second option is to fasten a sheet of 1/2" or 3/4" plywood to the concrete and then to continue with normal wood substrate installation. Adhesive can be used in conjunction with screws to ensure a solid installation. In some cases, adhesive will work on its own.

For more information, please visit our website or contact us:

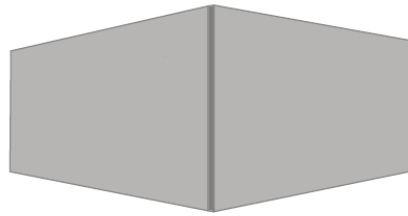
[www.hourwall.com](http://www.hourwall.com) \* Toll Free at 1-877-477-4373 \* Email at [info@instoneproducts.ca](mailto:info@instoneproducts.ca)

## OUTSIDE CORNERS

An outside 90 degree mitered corner.



An outside 90 degree butt corner.

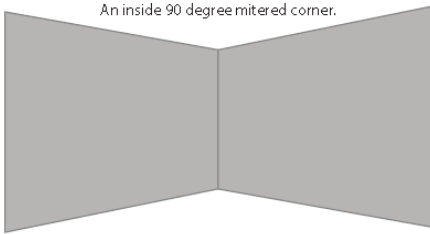


**BUTT CORNER (right drawing)** - the panels can simply be butt together to create a finished corner. If any cut edges are exposed, the appropriate coordinating Hourwall Paint Kit should be used to color the ends.

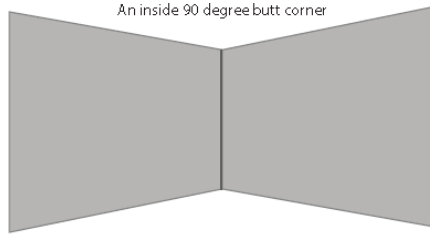
**MITER (left drawing)** - the panels can be mitered to create a more finished/continuous look. Cut the panel at a 45 degree angle, then use the same piece to continue on the return. If there is a gap, tighten screws or nails and fill unwanted gaps with the appropriate Stone Finish caulking and Hourwall Paint Kit.

## INSIDE CORNERS

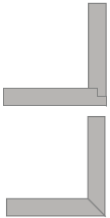
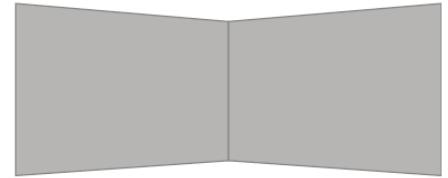
An inside 90 degree mitered corner.



An inside 90 degree butt corner.



An inside 130 degree mitered corner.



**BUTT CORNER (right drawing)** Butt two panels together at the inside corner. If there are any unwanted gaps, the Stone Finish Caulking can be used.

**MITER (left drawing)** - Cut the panel at a 45 degree angle, then use the same piece to continue the return. If there is a gap, fill unwanted gaps with the appropriate Stone Finish caulking and Hourwall Paint Kit.

## ELECTRICAL SWITCHES & PLUGS

Make all markings on the backside of the panel, then use a hole-saw or high speed drill to cut the opening. For precise cuts or for trimming, a utility knife or drywall saw can be used.

**INSET** - leave the cover plate on, and simply butt the panels to the edges of the cover plate for a clean look.

**FLUSH MOUNT** - an electrical extension box may be used to extend the electrical outlet to be flush with panels. You must first measure the thickness of the Hourwall panel(s) and extend the electrical outlet out the appropriate amount to be flush with the panel. Ensuring a tight fit, install the panel(s) around the box and reinstall the cover plate on the face of the panel(s).

**EXPANSION AND CONTRACTION:** Polyurethane panels will have minimal expansion and contraction. However, it is recommended to install your Hourwall panels when they are cool (contracted state) and as tight as possible to minimize the visual appearance of expansion and contraction. Stone Finish Caulking and the Hourwall Paint Kits can be used to fill in any unwanted gaps for a seamless finish.

**MAINTENANCE:** Dirt and scum can be washed off the product surface with water and a non-scuffing cloth or sponge. Mild, non-abrasive household cleaners or soap can be used carefully with water clean stubborn materials or stains. If any finish is compromised, the Hourwall Paint Kit can be used for all touch-ups and to re-finish.

For more information, please visit our website or contact us:

[www.hourwall.com](http://www.hourwall.com) \* Toll Free at 1-877-477-4373 \* Email at [info@instoneproducts.ca](mailto:info@instoneproducts.ca)