



Philips
transcription set
with SpeechExec workflow
software

Transcription



LFH7177

Optimize your workflow

with a professional document-creation solution

The transcription set is a digital document creation solution specifically designed to make transcription easy and intuitive. The ergonomic accessories and the innovative SpeechExec workflow software let you manage your jobs easily.

Comfortable and reliable

- Ergonomic foot pedal for convenient playback control
- Lightweight stereo headphones for enhanced wearing comfort

Enhance your productivity

- SpeechExec workflow software for efficient data management
- Priority setting for getting urgent recordings processed first
- Seamless integration into Philips digital dictation solutions

PHILIPS

Specifications

Highlights

Convenience

- Configurable foot pedal
- Lightweight headphone design
- Clear job overview
- Versatile audio player
- Playback speed control
- Automatic file routing

Foot pedal

- Connectivity: USB plug
- Product dimensions (W × H × D): 160 mm × 150 mm × 18 mm/6.3" × 5.9" × 0.7"
- Weight: 0.61 kg/1.3 lb

Headphones

- Style: under chin
- Cable connection: one-sided
- Cable length: 3.0 m/10 ft
- Connector: 3.5 mm, stereo, right angled
- Acoustic system: open
- Magnet type: neodymium
- Diaphragm: PET dome
- Voice coil: copper
- Impedance: 2 × 32 Ohm
- Maximum power input: 2 × 10 mW
- Sensitivity: 103 dB
- Speaker diameter: 14 mm/0.6"
- Sound quality: optimized for voice playback
- Connector finish: gold-plated
- Weight: 53 g/0.12 lb

System requirements

- Processor: Pentium IV 1 GHz recommended
- RAM memory: 1 GB (2 GB recommended)
- Hard disk space: 100 MB for SpeechExec software, 850 MB (32 bit)/2 GB (64 bit) for Microsoft .NET Framework (Windows)
- Headphone output or speakers
- Operating system: Windows 8/7/Vista (32/64 bit), Mac OS X 10.9/10.8
- Free USB port
- DVD-ROM drive
- Graphics card: DirectX-compliant graphics card with hardware acceleration recommended
- Sound device: Windows-compatible sound device

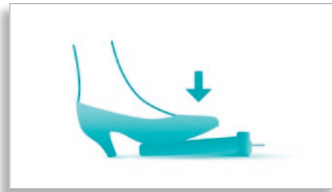
Green specifications

- Compliant to 2011/65/EU (RoHS)
- Lead-free soldered product

Package contents

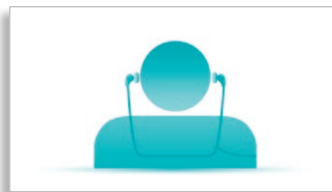
- SpeechExec Transcribe software
- Stereo headphones LFH0334
- USB foot pedal LFH2330
- User manual

Ergonomic foot pedal



Ergonomic foot pedal for hands-free control of all transcription and playback functions. The slim, ergonomic design guarantees operation with minimal physical strain.

Professional headphones



Lightweight, under-the-chin-style stereo headphones designed to deliver excellent sound quality, with soft ear cushions for enhanced wearing comfort.

SpeechExec software#



The SpeechExec software organizes the workflow of dictation files and resulting documents between author and transcriptionist and allows you to monitor the status of your work.

Priority setting



With the included priority-setting option, urgent recordings can be prioritized. This guarantees that important dictation files will be identified at a glance and get processed and delivered first.

Seamless integration



The transcription set can be seamlessly and easily integrated into existing Philips digital dictation solutions.



Issue date
2014-02-03
Version 3.1

© 2014 Speech Processing Solutions GmbH. All rights reserved.

Specifications are subject to change without notice. Philips and the Philips' shield emblem are registered trademarks of Koninklijke Philips N.V. and are used by Speech Processing Solutions GmbH under license from Koninklijke Philips N.V. All trademarks are the property of their respective owners.

www.philips.com/dictation