

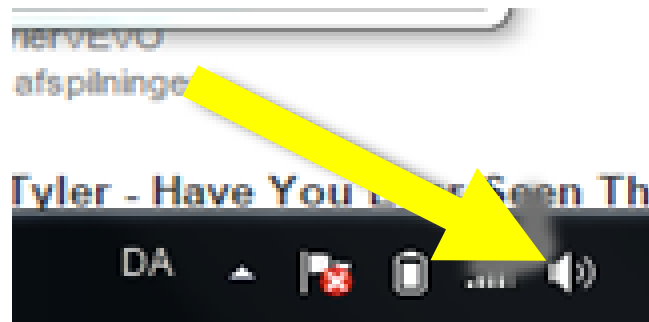
DenDAC driver installation for Windows XP, Vista, 7, 8 & 8.1 (32 & 64bit)

Follow this instruction precisely to avoid problems with the installation:

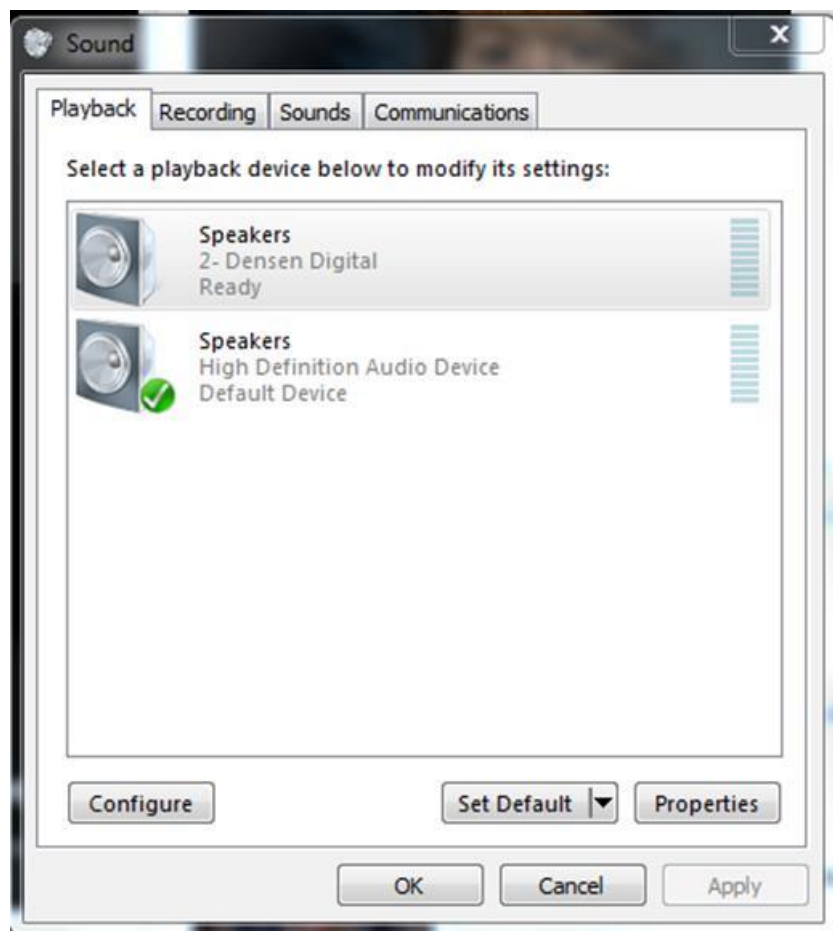
- 1) Turn on power of DenDAC.
- 2) Connect the DenDAC to your computer using a USB cable. Keep it connected for the whole installation.
- 3) If your computer wants to install a driver automatically, say NO to this. (Very important).
- 4) Insert the USB key in your computer. If it tries to make an automatic installation say NO.
- 5) Open the root of the USB, and select "setup.exe"
- 6) Follow the instructions on the screen:



7) Right click on the speaker icon in the start bar, and then click on 'Playback devices'.



8) And select "Densen Digital" and "Set Default".



Important before use:

Gizmo / DenDAC control.

If you want to use the DenDAC with a Gizmo remote, it is important to set up the DenDAC correctly. The remote system in the DenDAC can either work as dedicated DAC only, or as both DAC and preamp.

So you must decide which mode you want to use, in regards to Gizmo remote.

You choose the mode by the following command on your Gizmo (have all other Densen products in the room in "off", so they are not active, not naturally the DenDAC is in power on mode).

To toggle DAC and predac mode press: shift -> tape2 -> store

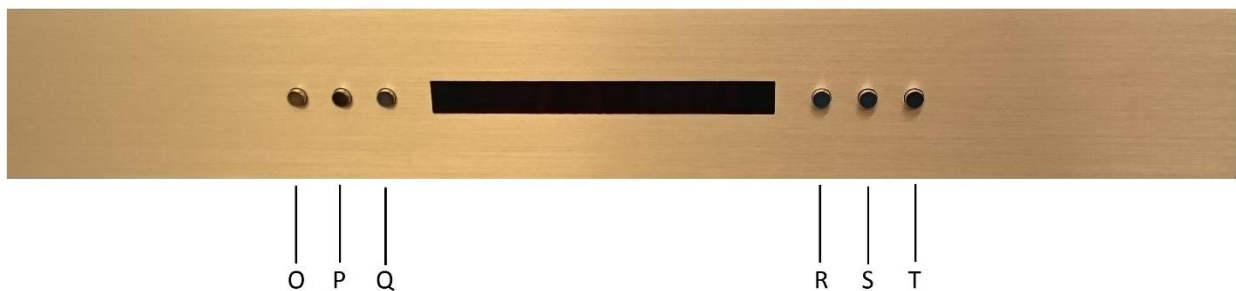
The display will write if the software are in DAC or PREDAC mode.

In DAC mode the tape 2 button on the Gizmo is used to toggle digital inputs while the analog inputs are deactivated on the gizmo, as they will control a Densen pre or integrated amp. Volume control is also deactivated on the Gizmo. You would naturally use the Fixed output to connect to your Preamp/Integrated amp.

In PreDAC mode the analog inputs are selected with the normal input selectors on the Gizmo: line 1 – 2 tape etc, while digital inputs are selected with tape2 (toggle).

If in PreDAC mode, you can connect a CD player to Line 1 on DenDAC (even if it is more natural to use the digital input). Then Gizmo will not work on the CD player. Simply press CD player on Gizmo to activate the CD functions again. DenDAC will not react to the CD command, so Line 1 is still the active input.

Front panel:



O: Idle: Sets the DenDAC on idle, pushing idle again will start up the DenDAC with input selection set to the input last used, and the volume setting set to the volume last used.

P: Arrow down: This button decreases the volume

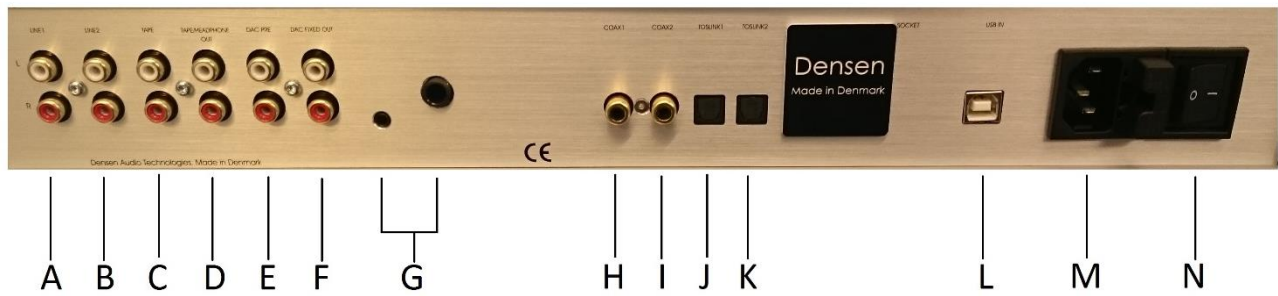
Q: Arrow up: This button increases the volume.

R: <: This button will toggle backwards between the inputs.

S: >: This button will toggle forwards between the inputs.

T: Status: Pushing this button will enable you to see the preset volume.

Back panel Connections:



A: Line 1: (line input), a normal line input.

B: Line 2: (line input), a normal line input.

C: Tape input.

D: Tape/Headphone out: (connects to line in on your recording device or headphone amplifier input). It is always the channel you are listening to, that is sent to the Tape deck for recording/Headphone amplifier, so do not switch input during recording. Tape monitoring is not possible. If you need to be able to monitor your recording, use a headphone connected to you tape deck.

E: DAC Pre: are the pre out for connection to power amplifier.

F: DAC fixed out: are a output for DAC input, (Coax1, Corax2, Toslink1, Toslink2, USB in) only, connect this to a normal input if you are only using the DenDAC for DAC purpose.

G: Headphone out, both mini jack and jack.

H: Coax1: Digital input for use an external source.

I: Coax2: Digital input for use an external source.

J: Toslink1: Digital input for use an external source.

K: Toslink2: Digital input for use an external source.

L: USB in: Digital input for use an external source.

M: Main input. Only power the DenDAC with the main voltage indicated on the sticker on the button. The mains input also contains a socket for fuses, which must only be replaced with same type and size/value of fuse as indicated on the sticker on the button.

N: Power on/off switch.