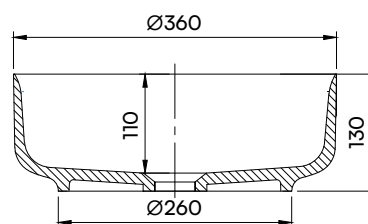
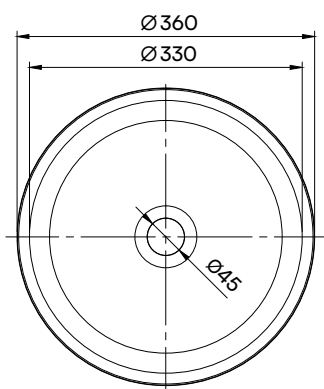




Material	Made from non-porous low-maintenance solid surface material
Finish	Matte
Included	White pop down waste

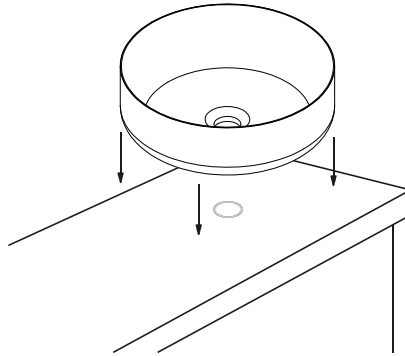


INSTALLATION GUIDE

Above Counter Round Basin

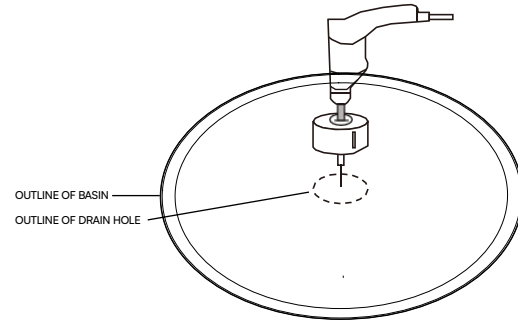
1

Measure drain opening and mark countertop with desired outlet position.



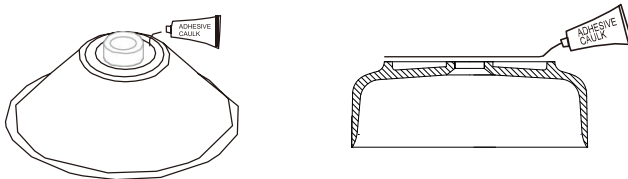
2

Drill out appropriately sized drain opening on the countertop.



3

Apply silicone sealant around the basin's bottom edge and outlet, clean away excess silicone from around the basin.



4

Install the waste per manufacturer's requirements. Run water into the basin and check for leaks.

