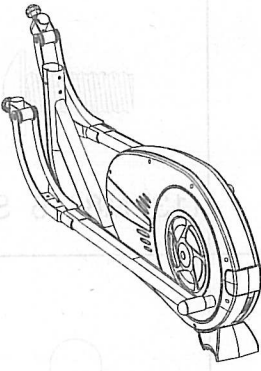
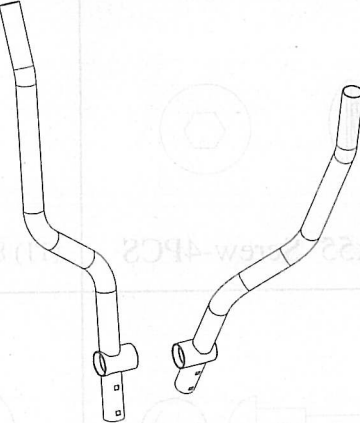
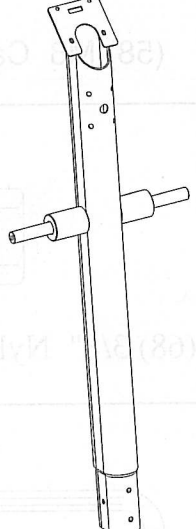
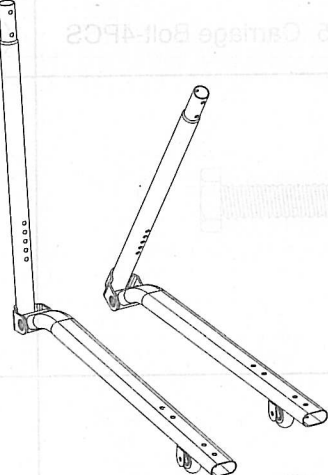
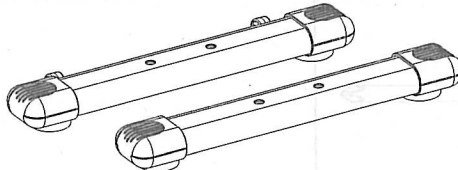
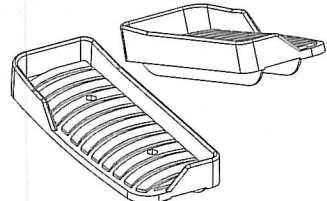

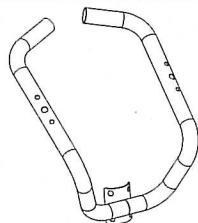
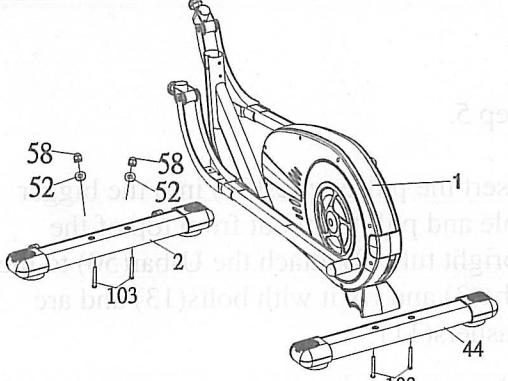
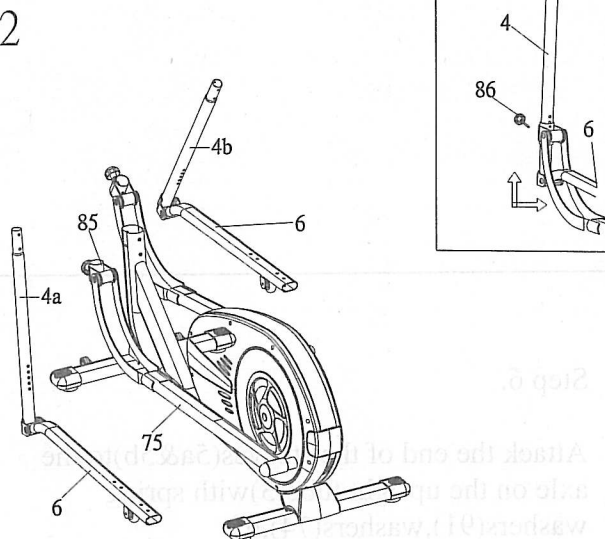
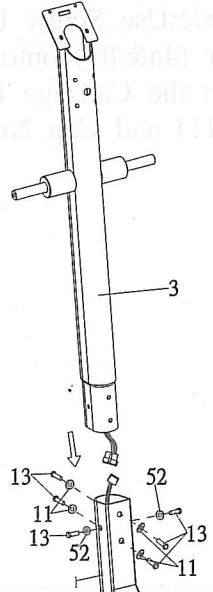


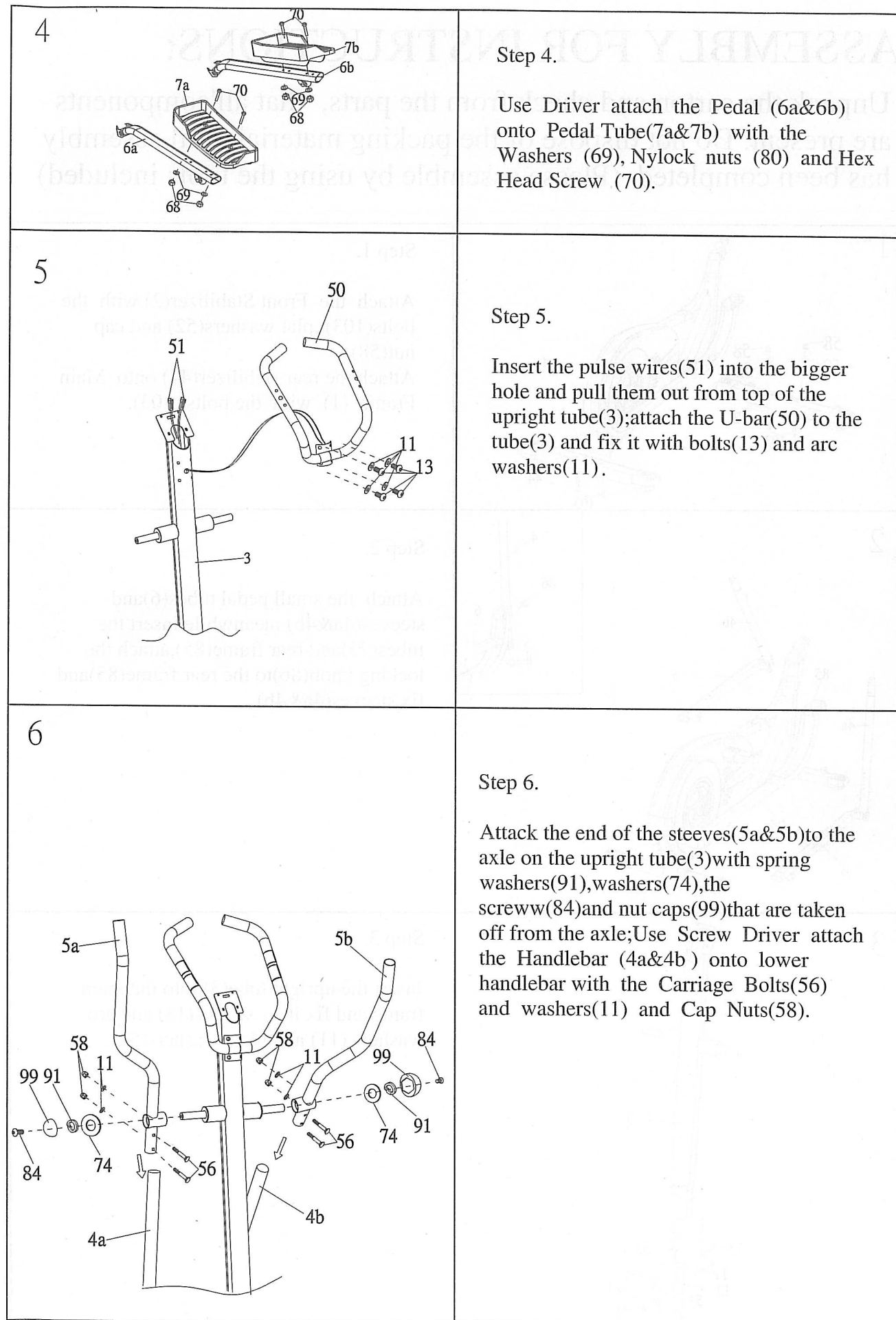
PART LIST

 <p>Main Frame (1)</p>	 <p>Handlebar(5a&5b)</p>
 <p>Upright Tube (3)</p>	 <p>Pedal Tubes(6a&6b)& Steeves(4a&4b)</p>
 <p>Front Stabilizer(2) and Rear Stabilizer(44)</p>	 <p>Pedals(7a&7b)</p>
 <p>Computer(8)</p>	 <p>U-Bar(50)</p>

ASSEMBLY FOR INSTRUCTIONS:

Unpack the carton and check from the parts, that all'components are present. Do not dispose of the packing material until assembly has been completed. (Please assemble by using the tools included)

<p>1</p> 	<p>Step 1.</p> <p>Attach the Front Stabilizer(2) with the bolts(103) ,plat washers(52) and cap nut(58). Attach the rear stabilizer(44) onto Main Frame (1) with the bolts (103).</p>
<p>2</p> 	<p>Step 2.</p> <p>Attach the small pedal tubes(6)and steeves(4a&4b) meanwhile insert the tubes(75)and rear frame(85),attach the locking knob(86)to the rear frame(85)and fix steeves(4a&4b).</p>
<p>3</p> 	<p>Step 3.</p> <p>Insert the upright tube(3) into the main frame and fix it by screws(13) and arc washers (11) and plate washers(52).</p>

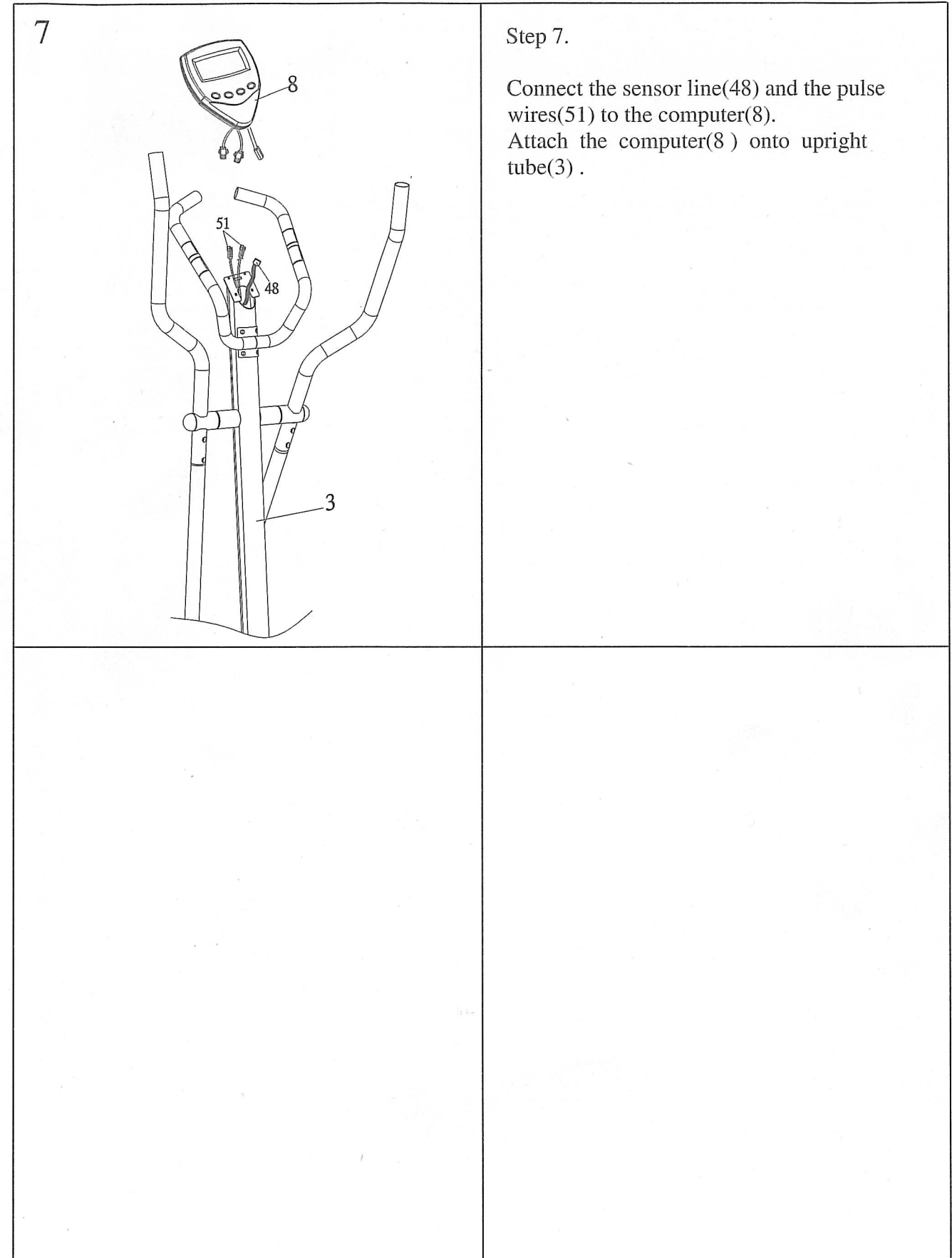


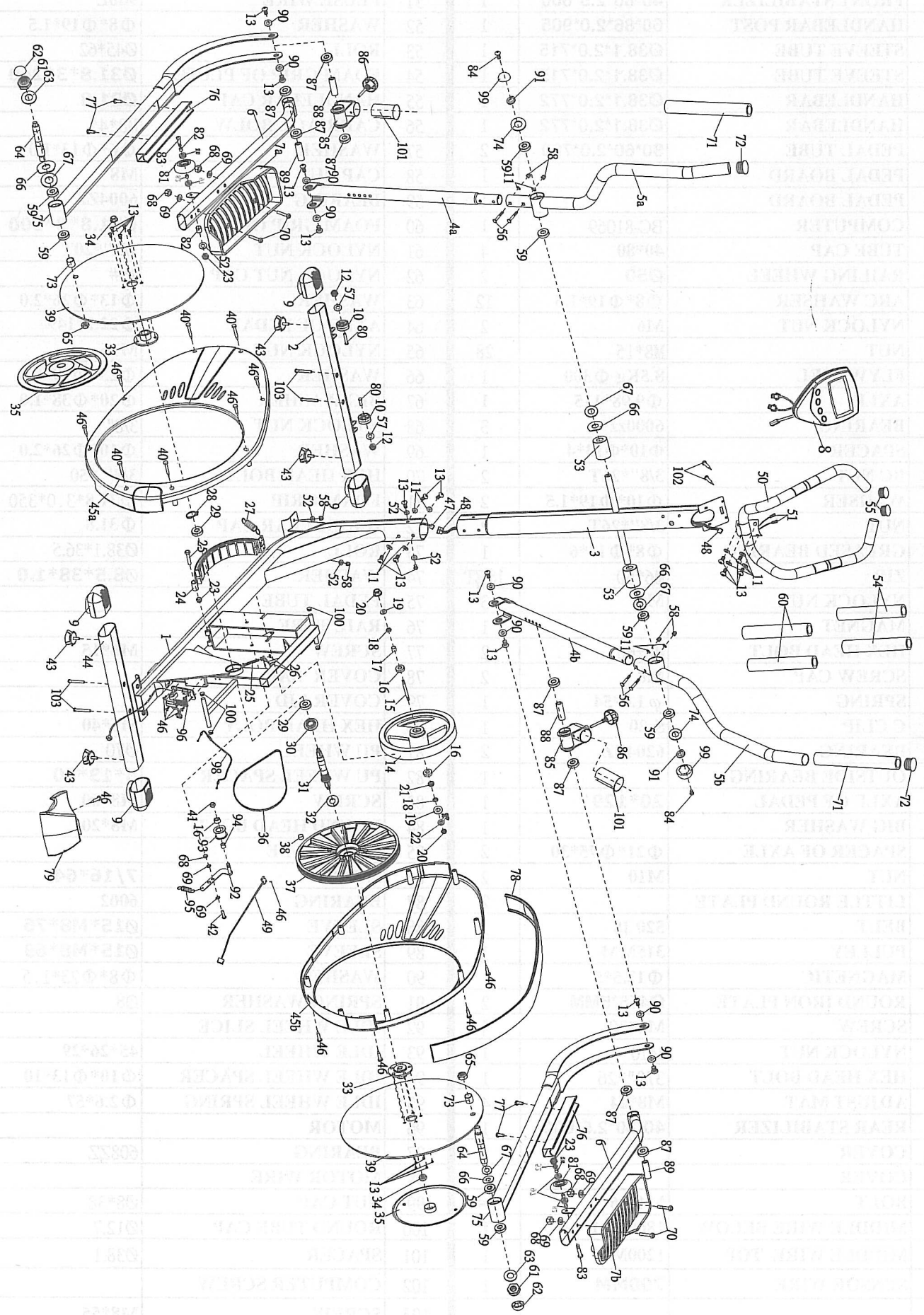
HARDWARE LIST

(103) M8x55 Screw-4PCS	(11) 8x19 Arc Washer-12PCS	(13) M8x15 Screw-10PCS
(56) M8x45 Carriage Bolt-4PCS	(62) 19#Plastic Cap-2PCS	(58) M8 Cap Nut-6PCS
(69) 10x26 Washer-4PCS	(68) 3/8" Nylon Nut-4PCS	
(52) 8x19 Washer-4PCS	Allen Wrench M5	Allen Wrench M6
	Screw Wrench 10x13x14x15x19	

SD825EL PARTS LIST

NO	DESCRIPTION	SIZE	Q'TY	NO	DESCRIPTION	SIZE	Q'TY
1	MAIN FRAME		1	50	PLUSE HANDLEBAR		1
2	FRONT STABILIZER	40*80*2.5*600	1	51	PLUSE WIRE	900L	2
3	HANDLEBAR POST	60*86*2.0*905	1	52	WASHER	Φ8*Φ19*1.5	4
4a	STEEVE TUBE	Ø38.1*2.0*715	1	53	ROLL	Ø45*62	2
4b	STEEVE TUBE	Ø38.1*2.0*715	1	54	FOAM GRIP OF PLUSE	Ø31.8*3*240	1
5a	HANDLEBAR	Ø38.1*2.0*772	1	55	HANDLEBAR CAP	Ø31.8	2
5b	HANDLEBAR	Ø38.1*2.0*772	1	56	CARRIAGE BOLW	M8*45	4
6	PEDAL TUBE	30*60*2.0*780	2	57	WASHER	Φ6*Φ13*1.0	2
7a	PEDAL BOARD		1	58	CAP NUT	M8	6
7b	PEDAL BOARD		1	59	BEARING	6004ZZ	8
8	COMPUTER	BC-81069	1	60	FOAM GRIP OF PLUSE	Ø31.8*3*300	2
9	TUBE CAP	40*80	4	61	NYLOCK NUT	1/2"*20T	2
10	RAILING WHEEL	Ø50	2	62	NYLOCK NUT CAP	19#	2
11	ARC WAHSER	Φ8*Φ19*1.5	12	63	WASHER	Φ13*Φ26*2.0	2
12	NYLOCK NUT	M6	2	64	AXLE OF PEDAL	Φ22.2*149	2
13	NUT	M8*15	28	65	NYLOCK NUT	M16	2
14	FLYWHEEL	8.5Kg Φ300	1	66	WASHER	Φ23*Φ29*0.5	4
15	AXLE	Φ9.98*115	1	67	BIG WASHER	Φ20*Φ38*1.0	2
16	BEARING	6000zz	3	68	NYLOCK NUT	3/8"	5
17	SPACER	Φ10*Φ13*4	1	69	WASHER	Φ10*Φ26*2.0	6
18	BC NUT	3/8"*26T	2	70	HEX HEAD BOLT	3/8" *50	4
19	WAHSER	Φ10*Φ19*1.5	2	71	FOAM GRIP	Φ31.8*3.0*350	2
20	NUT	3/8"*26T	2	72	HANDLEBAR CAP	Φ31.8	2
21	GREASED BEARING	Φ8*Φ13*6	1	73	ROLL	Ø38.1*36.5	2
22	ZIP	M6*50	1SET	74	WASHER	Ø8.5*38*1.0	2
23	NYLOCK NUT	M8	3	75	PEDAL TUBE		2
24	MAGNET		1	76	RAIL TUBE		2
25	HEX HEAD BOLT	M8*60	2	77	SCREW	M6*15	4
26	SCREW CAP	M8	2	78	COVER BAR		1
27	SPRING	φ 1.0*54	1	79	COVER LID		1
28	C CLIP	S-20	1	80	HEX HEAD BOLT	M6*40	2
29	BEARING	6204ZZ	2	81	PU WHEEL	Ø70	2
30	OUTSIDE BEARING		1	82	PU WHEEL SPACER	8*13*10	6
31	AXLE OF PEDAL	20*129	1	83	SCREW	M8*60	2
32	BIG WASHER		1	84	ROUND HEAD BOLT	M8*20	2
33	SPACER OF AXLE	Φ21*Φ75*30	2	85	MOVE TUBE		2
34	NUT	M10	2	86	KONB	7/16*64	2
35	LITTLE ROUND PLATE		2	87	BEARING	6002	8
36	BELT	520 J8	1	88	SLEEVE	Ø15*M8*76	2
37	PULLEY	315MM	1	89	SLEEVE	Ø15*M8*69	2
38	MAGNETIC	Φ12.5*5	1	90	WASHER	Φ8*Φ23*1.5	8
39	ROUND IRON PLATE	Ø456*5MM	2	91	SPRING WASHER	Ø8	2
40	SCREW	M4*30	4	92	IDLE WHEEL SLICE		1
41	NYLOCK NUT	M10	1	93	IDLE WHEEL	45*26*29	1
42	HEX HEAD BOLT	3/8"*26	1	94	IDLE WHEEL SPACER	Φ10*Φ13*10	1
43	ADJUST MAT	M8*24	4	95	IDLE WHEEL SPRING	Φ2.6*57	1
44	REAR STABILIZER	40*80*2.5*600	1	96	MOTOR		1
45a	COVER		1	97	BEARING	608ZZ	4
45b	COVER		1	98	MOTOR WIRE		1
46	BOLT	M4*16	14	99	NUT CAP	Ø8*38	2
47	MIDDLE WIRE BELOW	1800MM	1	100	ROUND TUBE CAP	Ø12.7	4
48	MIDDLE WIRE TOP	1200MM	1	101	SPACER	Ø38.1	2
49	SENSOR WIRE	700MM	1	102	COMPUTER SCREW		2
				103	SCREW	M8*55	4





NO.	DESCRIPTION	QTY	SIZE
1	MAIN FRAME		
2	FRONT FORK		
3	HANDLEBAR		
4	SEAT		
5	WHEEL		
6	PEDAL		
7	SEAT POST		
8	SEAT CLAMP		
9	HANDLEBAR CLAMP		
10	STEM		
11	STEM CLAMP		
12	STEM BUSH		
13	STEM BUSH WASHER		
14	STEM BUSH WASHER		
15	STEM BUSH WASHER		
16	STEM BUSH WASHER		
17	STEM BUSH WASHER		
18	STEM BUSH WASHER		
19	STEM BUSH WASHER		
20	STEM BUSH WASHER		
21	STEM BUSH WASHER		
22	STEM BUSH WASHER		
23	STEM BUSH WASHER		
24	STEM BUSH WASHER		
25	STEM BUSH WASHER		
26	STEM BUSH WASHER		
27	STEM BUSH WASHER		
28	STEM BUSH WASHER		
29	STEM BUSH WASHER		
30	STEM BUSH WASHER		
31	STEM BUSH WASHER		
32	STEM BUSH WASHER		
33	STEM BUSH WASHER		
34	STEM BUSH WASHER		
35	STEM BUSH WASHER		
36	STEM BUSH WASHER		
37	STEM BUSH WASHER		
38	STEM BUSH WASHER		
39	STEM BUSH WASHER		
40	STEM BUSH WASHER		
41	STEM BUSH WASHER		
42	STEM BUSH WASHER		
43	STEM BUSH WASHER		
44	STEM BUSH WASHER		
45	STEM BUSH WASHER		
46	STEM BUSH WASHER		
47	STEM BUSH WASHER		
48	STEM BUSH WASHER		
49	STEM BUSH WASHER		
50	STEM BUSH WASHER		
51	STEM BUSH WASHER		
52	STEM BUSH WASHER		
53	STEM BUSH WASHER		
54	STEM BUSH WASHER		
55	STEM BUSH WASHER		
56	STEM BUSH WASHER		
57	STEM BUSH WASHER		
58	STEM BUSH WASHER		
59	STEM BUSH WASHER		
60	STEM BUSH WASHER		
61	STEM BUSH WASHER		
62	STEM BUSH WASHER		
63	STEM BUSH WASHER		
64	STEM BUSH WASHER		
65	STEM BUSH WASHER		
66	STEM BUSH WASHER		
67	STEM BUSH WASHER		
68	STEM BUSH WASHER		
69	STEM BUSH WASHER		
70	STEM BUSH WASHER		
71	STEM BUSH WASHER		
72	STEM BUSH WASHER		
73	STEM BUSH WASHER		
74	STEM BUSH WASHER		
75	STEM BUSH WASHER		
76	STEM BUSH WASHER		
77	STEM BUSH WASHER		
78	STEM BUSH WASHER		
79	STEM BUSH WASHER		
80	STEM BUSH WASHER		
81	STEM BUSH WASHER		
82	STEM BUSH WASHER		
83	STEM BUSH WASHER		
84	STEM BUSH WASHER		
85	STEM BUSH WASHER		
86	STEM BUSH WASHER		
87	STEM BUSH WASHER		
88	STEM BUSH WASHER		
89	STEM BUSH WASHER		
90	STEM BUSH WASHER		
91	STEM BUSH WASHER		
92	STEM BUSH WASHER		
93	STEM BUSH WASHER		
94	STEM BUSH WASHER		
95	STEM BUSH WASHER		
96	STEM BUSH WASHER		
97	STEM BUSH WASHER		
98	STEM BUSH WASHER		
99	STEM BUSH WASHER		
100	STEM BUSH WASHER		
101	STEM BUSH WASHER		



Attach the computer (8) onto upright
 wires (1) to the computer (8)
 Connect the sensor line (2) and the pulse
 wires (3) to the computer (8)

Step 7

SD-825EL

