

# CONNELLY

## Stand Up Paddle Board Operator's Manual

### **WARNING**

#### **SUP USE INVOLVES INHERENT RISKS OF SEVERE INJURY OR DEATH.**

To reduce risks:

- Always wear a leash and a properly fitted life jacket approved by your country's agency (USCG Type III, ISO, etc.). See the user's manual to review the appropriate jacket and leash for the waterway you are paddling.
- This board is not a life saving device.
- Never use this product while under the influence of alcohol or drugs.
- This product should never be used by children except under adult supervision.
- Know the waterway, including current, undertow, and forecasted water and weather conditions. Do not use in high surf, high wind, rapids, shallow water, or near swimmers, other watercraft, docks, pilings or any other obstacles.
- Observe all federal and local water use regulations.
- Do not tow or attempt to ride this board behind a boat or vessel.
- Inspect all equipment prior to use. Do not use if damaged.
- Always read user manual before use.

### **PRODUCT INSTRUCTIONS AND WARNINGS**

Paddle boarding can be safe and fun for all levels of enthusiasts. The Operator's Manual is presented to enhance your enjoyment of the sport. It is intended to alert you to some of the potentially dangerous conditions that can arise.

To reduce your risk of injury or death, follow these guidelines:

- When using your paddle board the owner is responsible for his/her safety and of others around the activity.
- Anyone using this paddle board should take lessons from a paddle board school.
- Check your surf leash each time you use your paddle board and replace it if you see any signs of wear.
- Be careful when carrying this paddle board, especially in windy conditions as an injury may be caused by those around a loose board.
- Do not use this paddle board in a lightning or thunder storm.

### **HOW TO CARE FOR YOUR PADDLE BOARD**

#### **Clean and Store Properly**

1. After each use, use fresh water and clean the board, surf leash and paddle.
2. Use a board bag for transporting your board, not for long-term storage. A wet board and bag will affect the finish of your board, possibly creating mold and surface blisters.
3. Direct sunlight on a board in a board bag will accumulate heat and may bake your board causing damage.
4. Keep your board and paddle in a cool, shaded area. A hot location (inside a car, heated storage/garage) or in direct sunlight may delaminate your board or cause damage to the board, deck pad and paddle.

#### **Fin Maintenance**

1. Remove the fins after each use and store in a fitted bag to help keep them in good condition.

2. If damaged, a fin could significantly reduce your board's performance.
3. Be sure to attach the fin securely before using your board to avoid core, skin and fin box damage.

#### **Proper Air Vent Care – Epoxy Board Models Only**

1. Frequently check the vent plug seal for cracks, tears or other damage and replace if needed.
2. Keep vent clean.

#### **Controlling Sunlight Exposure**

1. An overheated paddle board is not protected by warranty!
2. Sunlight will harm your paddle board if exposed for extended periods of time.
3. Do not leave your board exposed to sunlight when it is out of the water. Keep it in the shade.
4. If the board heats to around 165° F the foam will become unstable.
5. If your board is exposed while transporting, keep the bottom facing up.
6. Keep the deck pad stored away from sun exposure to avoid board damage.

#### **If Your Board is Damaged**

1. Leave the water at once if your board is punctured.
2. Delamination and other damage may occur if it is not repaired.
3. It is recommended that you use a professional board repair facility to repair your board.
4. If you want to repair your epoxy board model yourself, use an epoxy resin, **not** a polyester resin.

## **GETTING READY TO USE YOUR STAND-UP PADDLE BOARD**

#### **Gather these tools and supplies for changing paddle length (carbon paddle only):**

hack saw	sandpaper/sanding block	5 minute epoxy
masking tape	tape measure	stir stick
sanding block	fine tip permanent marker	mixing tray
medium grit	dust mask	

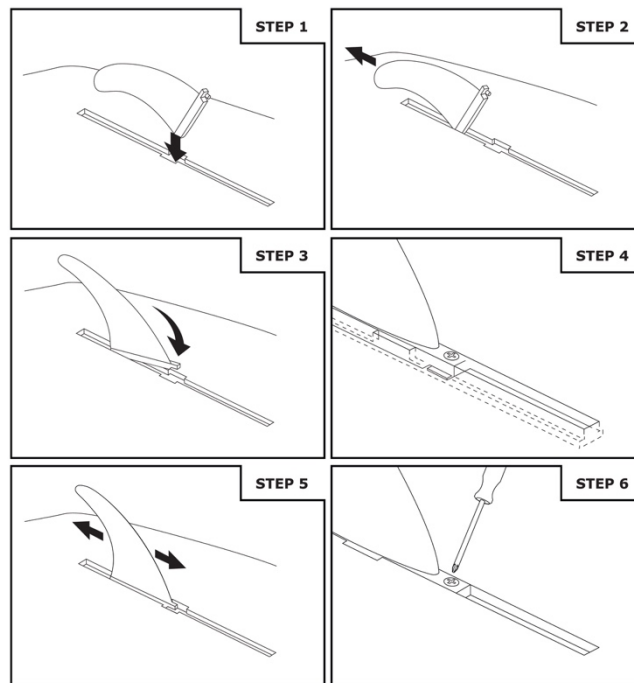
#### **Customizing Your Carbon Paddle Length**

1. We suggest the total paddle length (with handle) be about 7" to 10" above your head. However, the length is your personal preference:
  - Longer is better for racing and on flat water.
  - Short is better for riding on waves.
2. If you need to cut your paddle:
  - Stand the paddle up next to you with the tip of the blade touching the ground and mark a line on the shaft at the top of your head.
  - Add approximately 7" to 10" (your preference) and then add the length of the handle and make a mark where you will cut.
  - Wrap masking tape around the shaft at the cutting mark. The tape prevents splintering when cutting.
  - Cut the shaft using a hack saw.
  - Take off the masking tape and using a sanding block, sand the end of the shaft flat, smoothing out the edges.

#### **Attaching the Handle**

1. Mix the epoxy thoroughly in the mixing tray following package instructions.
2. Using the epoxy, coat the inside of the handle.
3. While this epoxy is still wet, place the handle onto the shaft of the board, lining up the flat side of the handle with the outward part of the blade.
4. Be sure that the front, flat side of the handle is perfectly parallel with the front side of the blade. This cannot be straightened after the epoxy dries.

#### **Installing and Removing Fins**



### Mounting the Center Fin

You will need a screwdriver to install the fin, metal plate and screw.

1. First, clean the center fin box.
2. Push the metal plate forward all the way in the fin box if the fin tab is on the front of the fin or push the metal plate back all the way in the fin box if the fin tab is on the rear of the fin.
3. Insert the metal pin into the fin box opening while holding the fin at an angle.
4. Continue holding the fin at an angle and slide the fin into position.
5. Push the fin flush with the fin box.
6. With a screwdriver, line up the holes of the metal plate and the fin tab.
7. Place the screw into the fin tab.
8. With a screwdriver, tighten the screw into the metal plate.

### Mounting the Side Fins - Epoxy Board Models Only

Note: Side fins and fin boxes are not included with all stand-up paddle boards.

1. Start by loosening the hex screws.
2. Clean the fin boxes and hex screw heads.
3. Firmly hold the fin and push the base of the fin into the fin box. Push down until the fin is flush with the board.
4. Push the hex screw key into the hex screw head to avoid stripping.
5. Screw the hex screws against the two posts.  
NOTE: DO NOT screw the hex screws too tight or you may cause damage.
6. Be sure that the fin is secure. Grab the top of the fin and wiggle it to be sure it is secure in the box. If it is loose, tighten the hex screws.

### Attaching a Surf Leash

**WARNING:** Always use this board with a leash. Depending on water conditions, it is dangerous to you and everyone around if there is a loose paddle board, as this may result in a serious injury or death.

#### First Attach a Leash String to the Board

1. Thread the loop through the leash plug at the end of the board.
2. Pull the loop up even with the knot.

#### Then Attach a Surf Leash to the Board

1. Pull open the Velcro leash attachment and pull the flap through the leash string.

2. Close all Velcro flaps firmly.
3. Press on the board and pull on the leash simultaneously to insure the leash attachment is secure.

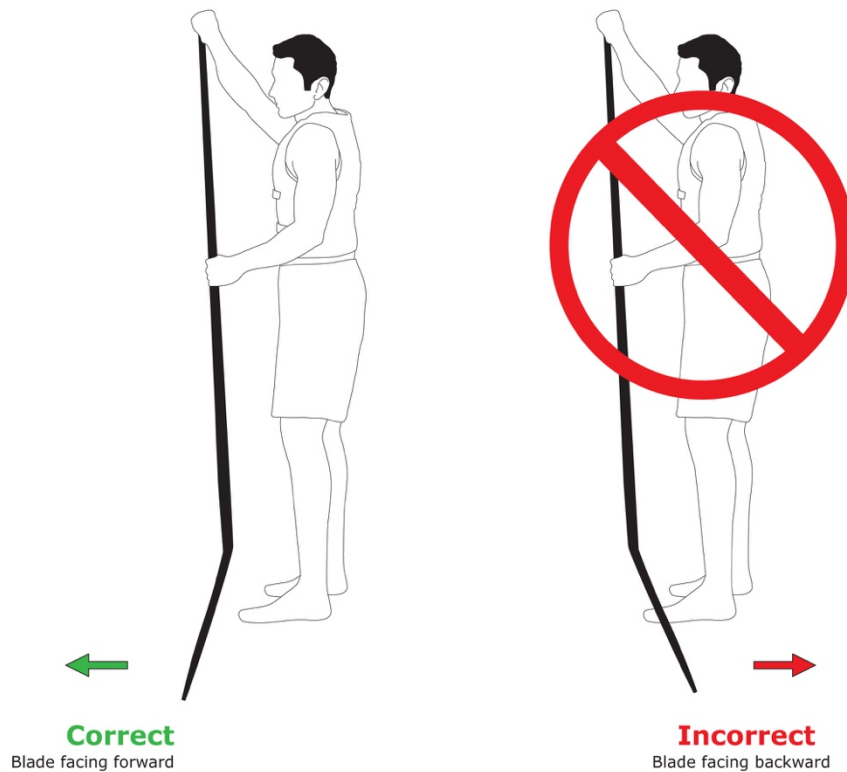
#### Now Attach the Surf Leash to Your Ankle

1. Pull open the Velcro ankle strap and wrap the ends comfortably tight around your ankle.
2. Close all Velcro flaps firmly.
3. Check to be sure that the ankle attachment is secure by pulling on the leash.

<u>Water conditions</u>	<u>Jacket</u>	<u>Leash</u>
Calm, Flat Water	Inflatable or Type III PFD	Coiled
Multi-use Waterway	Inflatable or Type III PFD	Coiled or Hybrid leash
SUP Surfing	Type III PFD	Straight Leash
Open Ocean	Inflatable or Type III PFD	Coiled
Wide Rivers/Tidal areas with Current	Inflatable or Type III PFD	Coiled
Moving Water Rivers	Type III PFD	Quick-Release attached to waist

#### Properly Holding the Carbon Paddle

### How to Hold the Paddle



## ONE YEAR LIMITED WARRANTY

Connelly Skis warranties and obligations set forth below are in lieu of any other express warranties or obligations of Connelly Skis, its distributors, or retailers. All Connelly Skis products are warranted to the original purchaser to be free from defects in material workmanship except as otherwise provided herein. Connelly Skis warranty extends for a period of ONE YEAR from date of purchase on all products except hand finished epoxy wake surfboards, wood products, leisure items, pumps and apparel. Wood products, leisure items and pumps are warranted for 90 days. Epoxy hand finished wake surfboards and apparel are not applicable to any warranties. Proof of purchase is required from an authorized Connelly Skis dealer. **RECEIPT MUST CLEARLY IDENTIFY DEALER.** Connelly Skis will, at manufacturer's option, repair or replace any Connelly Skis product, except those excluded from warranty, which exhibits defects in material or workmanship. **REPAIRED OR REPLACED ITEMS ARE COVERED FOR THE REMAINDER OF THE ORIGINAL WARRANTY ONLY.**

## WARRANTY DURATION

### **1 year from date of purchase**

Skis, wakeboards, boots and bindings, compression molded and Thermo Shell wake surfboards, SUP's and iSUP's, kneeboards, ropes and handles, vests, tubes, bags and gloves.

### **90 days from date of purchase**

Wood products, leisure items (floats, dipped vinyl, water mats) and pumps.

### **No Warranty**

Epoxy wake surfboards and apparel.

## CONNELLY SKIS WARRANTY DOES NOT COVER:

- Any damage caused by SLIDERS, RAILS, or KICKERS. DO NOT Slide your board on any sliders/rails if you want to keep your warranty. There are no exceptions to this rule.
- Epoxy Wake Surfboards.
- Cost of return shipments to Connelly Skis.
- Normal wear and tear including, but not limited to, scratches, nicks, fading, tearing of finger holes, pull straps, laces nor does it extend to normal wear and tear of abrasion of the materials used, or damage due to improper handling, maintenance, modification, use or storage.
- Damage caused by modifications and/or use of equipment not provided with the purchase of Connelly Skis products, this includes bolt-on systems to attach fins and bindings or other items not sold by Connelly Skis. Also, cutting and reshaping boards, overlays and or binding parts, etc.
- Damage to skis or boards incurred while other manufacturer's bindings, and/or fins were in use.
- Damage caused by misuse or an accident such as dock slides, dock or beach starts, striking a solid object, tow rope handle striking product, etc. The validity of damage or any like situation reports are at the discretion of Connelly Skis warranty personnel.
- Damage due to discoloration from sunlight, excessive heat exposure, improper storage and over/under inflation.
- Products used in commercial, rental, demo, or instructional programs.

## HOW TO OBTAIN A WARRANTY

During the warranty period, Connelly Skis will, at its option, either repair or replace a defective Connelly Skis product. You must pay shipping charges. If Connelly Skis determines that the product does not meet the warranty requirements, Connelly Skis will notify you of the cost to repair, if applicable, or if the product cannot be repaired. You will be given the option to repair the product (if repairable) at the quoted cost, and

Connelly Skis will repair and return to you. You must also pay the return shipping charges. If you decide not to have the product repaired, or if the product cannot be repaired, you can request the product to be returned. You must pay the return shipping charges.

Connelly Skis claims can be handled in one of two ways: (1) customers can return the product to the retail location where the original purchase was made. (2) Customers can contact Connelly Skis directly to obtain a return authorization number and send the product back on their own. To obtain a return authorization #, please refer to Return Authorization Policy. Return Authorization is for inspection purposes only. Disposition will be determined by Connelly Skis warranty personnel. No warranty claims will be accepted without a valid Return Authorization number and PROOF OF PURCHASE FROM AN AUTHORIZED CONNELLY SKIS DEALER. Warranty claims are claims for warranty coverage only and do not constitute an agreement by Connelly Skis to accept the warranty claim.

CONNELLY SKIS, LLC., 20621 52<sup>nd</sup> Avenue West, Lynnwood, WA 98036  
PHONE (425) 775-5416, FAX (425) 778-9590      infobox@connellyskis.com