

## WHAT IS THE SCREED BUDDY SYSTEM?

Screed Buddy System is a patented technology purposefully designed and made in Australia to remove protruding wastewater pipes from concrete foundations. Screed Buddy System is no ordinary cap, with its specifically manufactured formula that offers durability and flexibility.

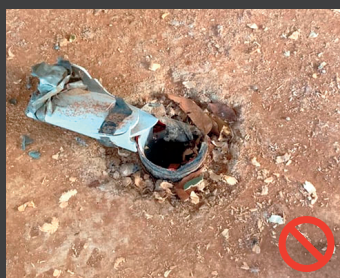
Once installed, Screed Buddy System has a unique ability to indicate its location on the level concrete foundation after the concrete has been poured and it self-cleans.

Screed Buddy System is designed with an outer lip to provide clearance for suitable coupling and the ability to be fitted with minimal obstruction or cleaning.



Scan or click to watch introduction video

## ON-SITE



## BENEFITS

- ✓ Concreters improve the process and finishing standards; easier & faster to screed with no pipes in the way.
- ✓ Lay mesh easier & safer during preparation without pipes being in the way whilst carrying, laying & cutting mesh around them.
- ✓ Achieve a better FFL (flat floor level) during the finishing process by eliminating the hand screed around extruded pipes.
- ✓ Reduce body fatigue by removing the movement of bending over to hand screed around every pipe.
- ✓ This aids the tiler, whose bathroom & wet areas are drastically flatter before the tiling process starts. No grinding or levelling is needed, which is a common rectification.
- ✓ The framers can quickly flick chalk lines to start the framing process. They can drag pre-fab frames over the slab without breaking pipes, drastically improving their setup/build time.
- ✓ Scissor lifts can easily drive over slabs with multi-story builds.
- ✓ Leave screed buddy on the pipes during the build process, until they are ready in each room to fit off. Stops debris & rubbish getting stuck in pipes, stops broken pipes before the plumber gets to the site.

## SIZING & PRICING OVERVIEW

Product Description	Size (colour)	List Price (ex GST) <i>per unit</i>	RRP (inc GST)	SKU	Pack Qty
Internal Coupler	40mm (pink)	\$6.00	\$6.60	SB-I40	20
Internal Coupler	50mm (yellow)	\$6.00	\$6.60	SB-I50	20
Internal Coupler	65mm (blue)	\$6.00	\$6.60	SB-I65	20
Internal Coupler	80mm (green)	\$6.00	\$6.60	SB-I80	20
Internal Coupler	100mm (orange)	\$6.00	\$6.60	SB-I100	20
External Coupler	40mm (pink)	\$10.00	\$11.00	SB-E40	20
External Coupler	50mm (yellow)	\$10.00	\$11.00	SB-E50	20
External Coupler	65mm (blue)	\$10.00	\$11.00	SB-E65	20
External Coupler	80mm (green)	\$10.00	\$11.00	SB-E80	20
External Coupler	100mm (orange)	\$10.00	\$11.00	SB-E100	20

### COST SAVINGS

- Reduce rectification costs
- Reduce labour costs
- Increase efficiency
- Increase productivity

## HOW TO INSTALL

### 1 Identify pipes to be fitted with the Screed Buddy System

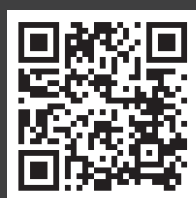
*Note, Double story houses will have pipes that run up into the second story, these may require an 'EXTERNAL COUPLER'*

- 2 Set up a levelling device to the finished floor level (FFL)
- 3 Take 5mm from your FFL
- 4 Carefully mark each pipe to be fitted with a screed buddy
- 5 Using a hand saw or grinder to cut the pipe accurately and level
- 6 Select the correct size Screed Buddy to suit the pipe size
- 7 Fit Screed Buddy and firmly push down to the top of the pipe
- 8 Use duct tape or a zip tie to wrap around the Screed Buddy to secure in place
- 9 Place the levelling device on top of the screed buddy ensuring that is level and no more than 5mm below FFL



### PRODUCT SPECIFICATIONS

You can scan or click the QR code



### CONCRETER FITTING INSTRUCTIONS

You can scan or click the QR code



### PLUMBER REMOVAL INSTRUCTIONS

You can scan or click the QR code