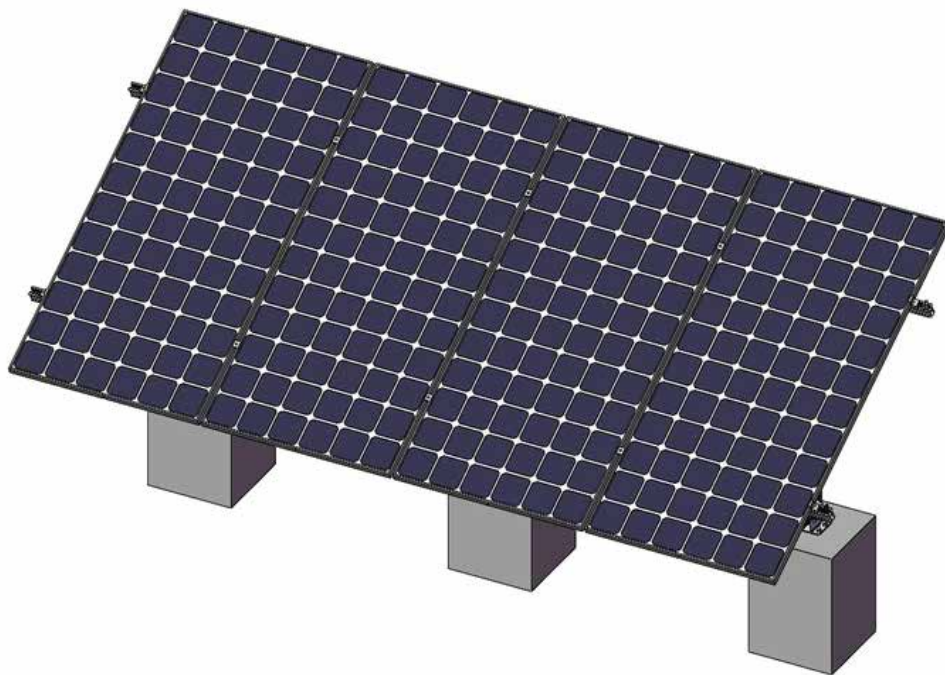




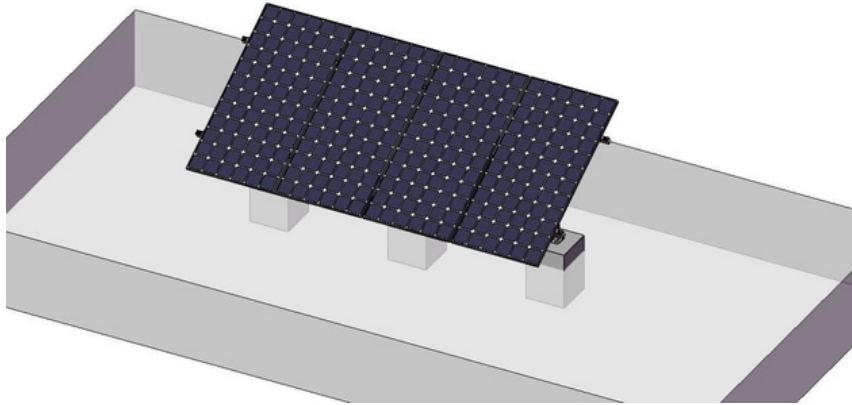
MAPLE LEAF
power systems

Maple Leaf Canada Goose 4 Panel Ground Mount



Introducing the Maple Leaf Canada 4 Panel Goose Adjustable Ground Mount. Our unique tilting structure collects as much as 70% percent additional solar energy than typical configurations, ensuring outstanding performance in all seasons. This adjustable mounting bracket, which is appropriate with all types of solar panel's brands, is the gateway to off-grid power perfectionism, with a maximum width that can accommodate distinct setups

<https://mapleleafpowersystems.com/>



1. Preparation

1.1 Safty

Please use the following tools and pay attention to safety during construction



Safety Clothing

Safety Shoes

Helmet

Safety Glas Goggles

1.2 Tools



Allen wrench
M8-M12



Wrench
M8-M12



Twist Wrench
M8-M12



Electric Rotor



Awning Turned



Electric Screw



Tape Measure



Rope



Wood Hammer



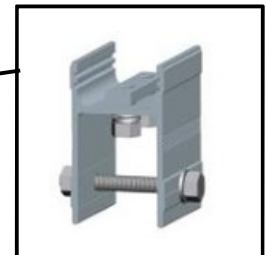
Outer hexagonal bolt	Type of sleeve:	Inner hexagonal bolt	Type of sleeve:
ST6.3	10mm sleeve	M8	6mm hexagon wrench
M10	16(17)mm sleeve		
M12	18(19)mm sleeve		

If there is another type of bolt,pls use other sleeves

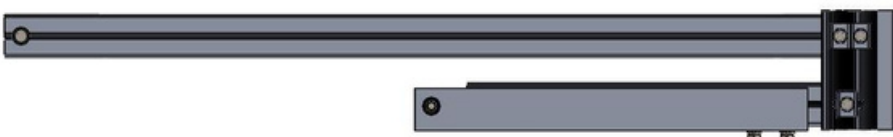
Sleeve

1.3 Solar Accessories

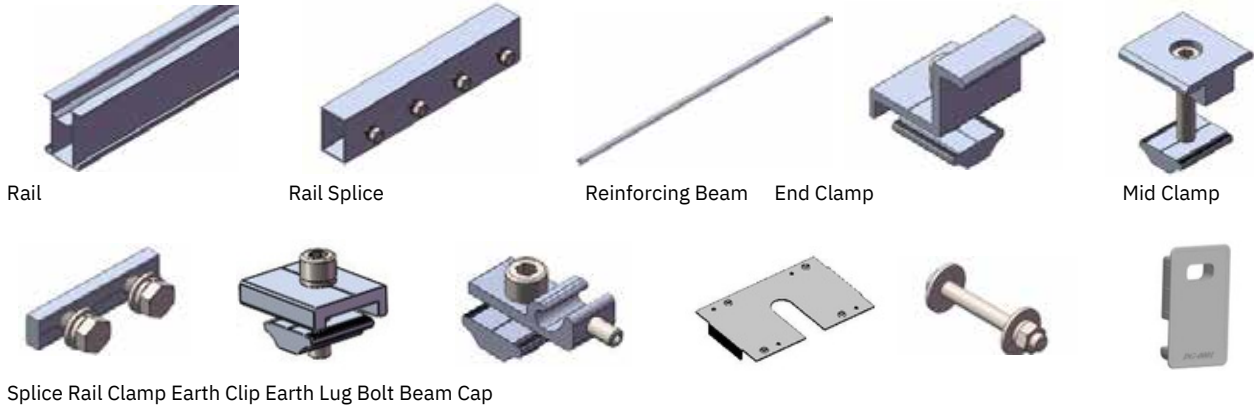
Preassemble Beam



Preassemble Pillar with Base

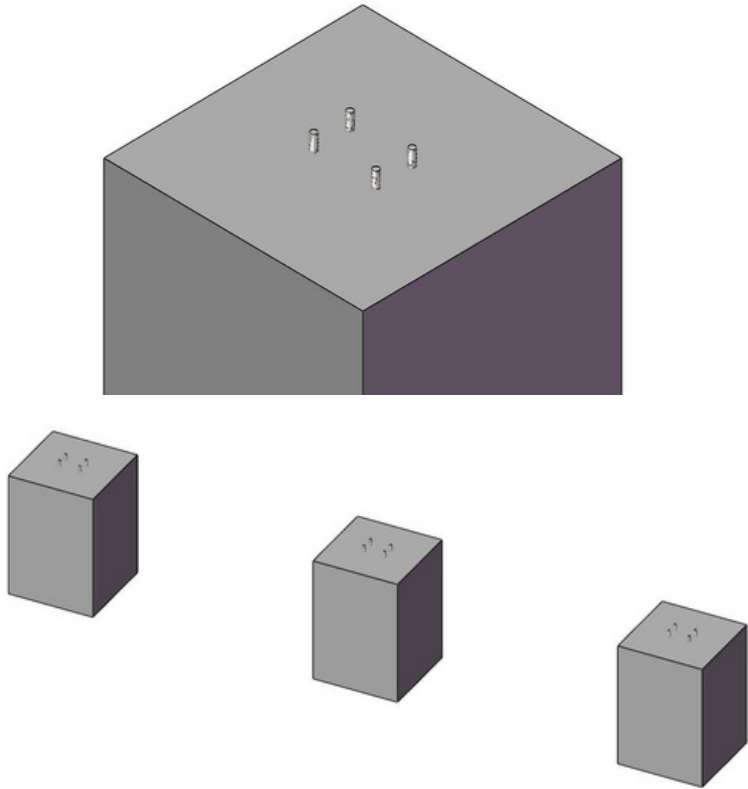


Other Accessories



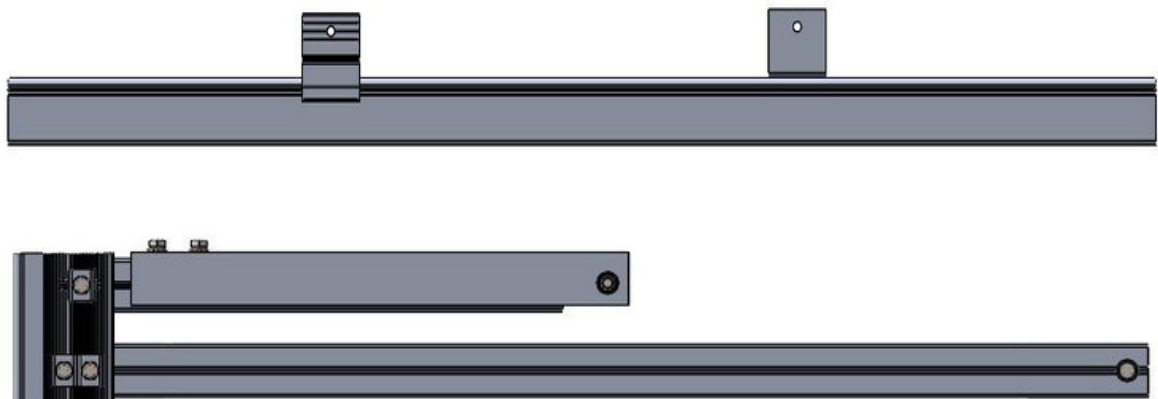
2. Installation

2.1: Drill the expansion bolt on the existed concrete block, and keep them in same line.

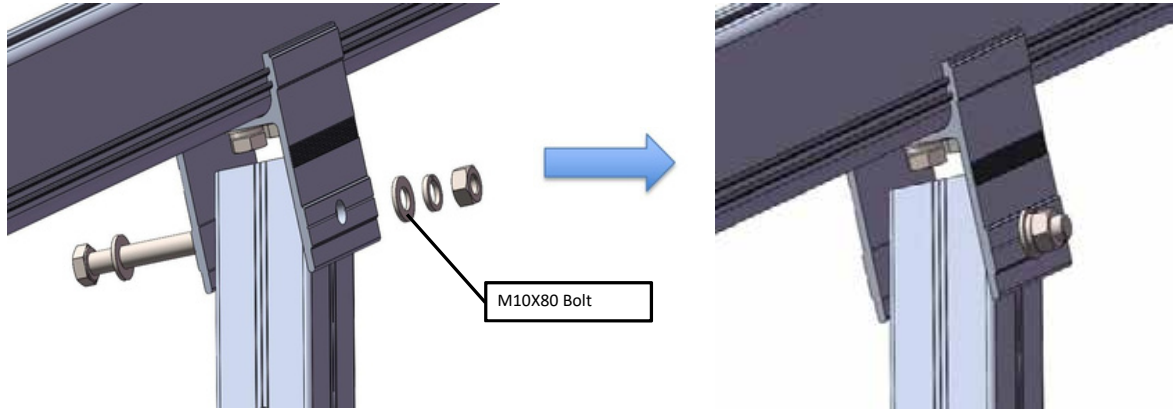


2.2: Install Pre-assembled Pillar to the base and install the Pre-assembled Pillar Beam

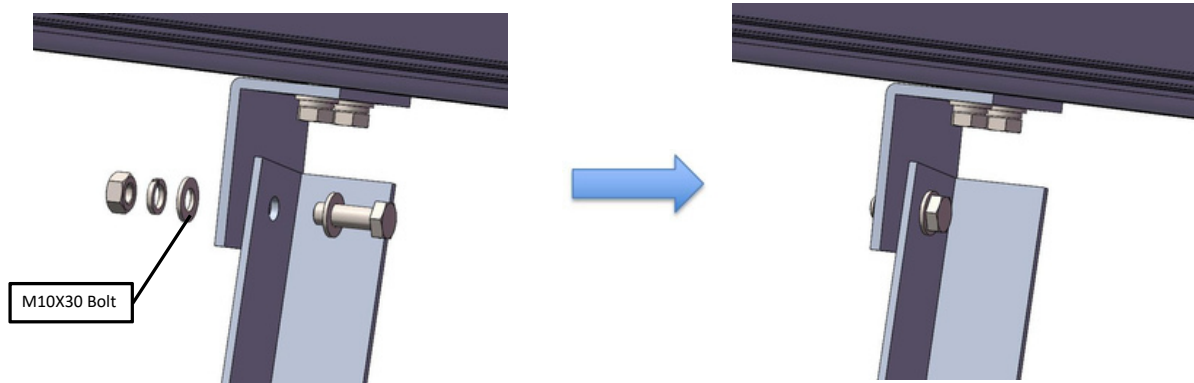
Take out the Pre-assembled Pillar and Pre-assembled Pillar Beam



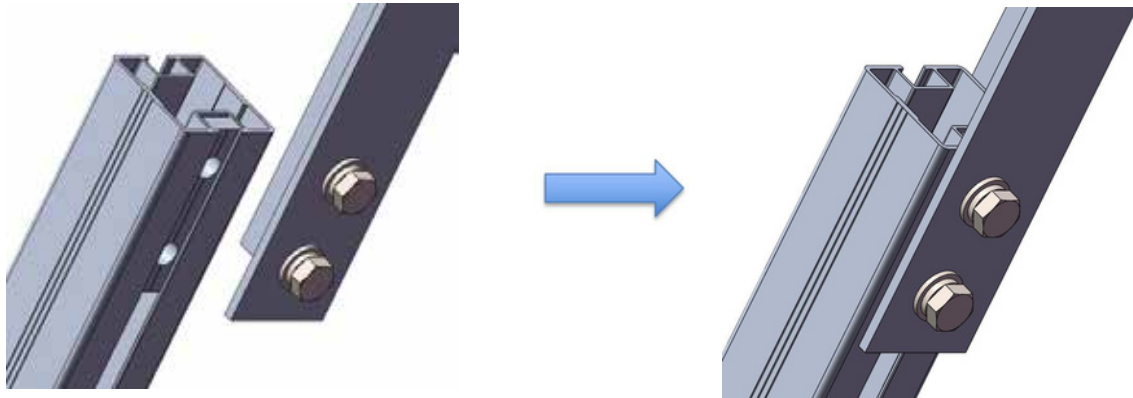
2.3: Use M10X80 to connect the Pre-assembled Pillar to the Pre-assembled Pillar Beam



2.4. Using the M10*30 bolt of the L feet to connect the reinforcing beam of Pre-assembled Pillar



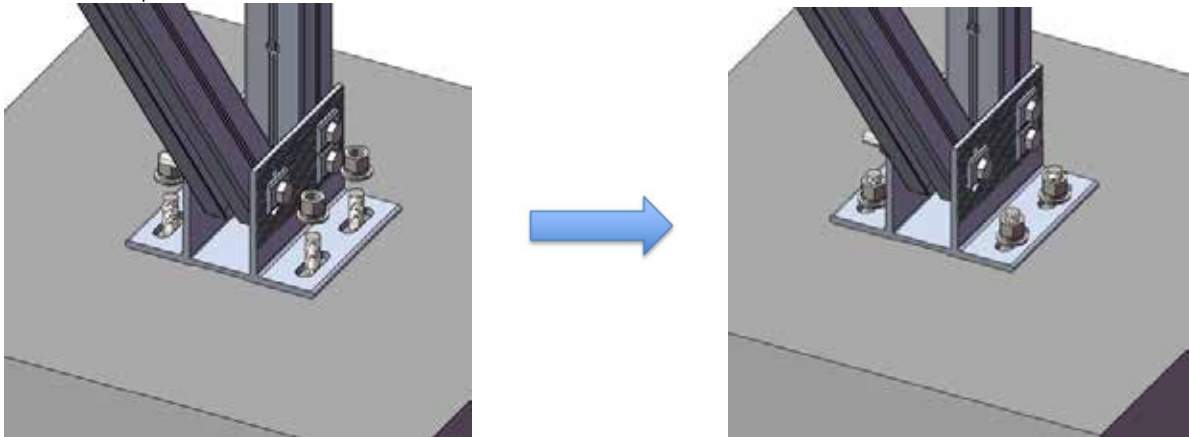
2.5: Adjust the splice to adjust the angle and fix



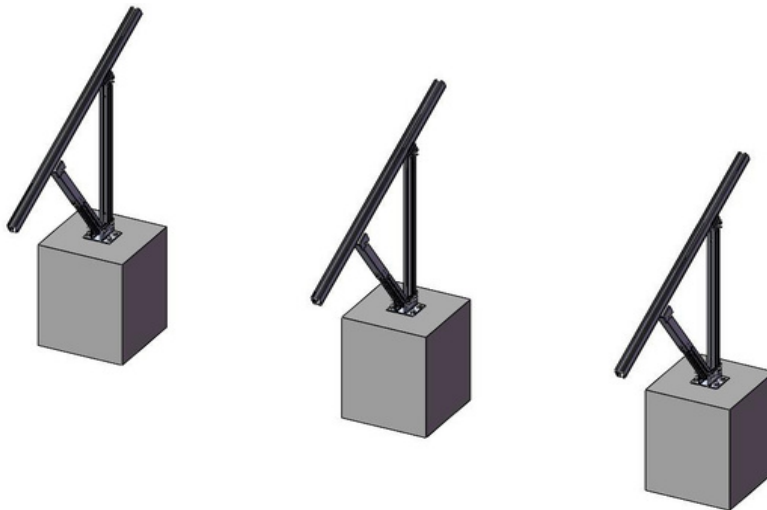
Completed :



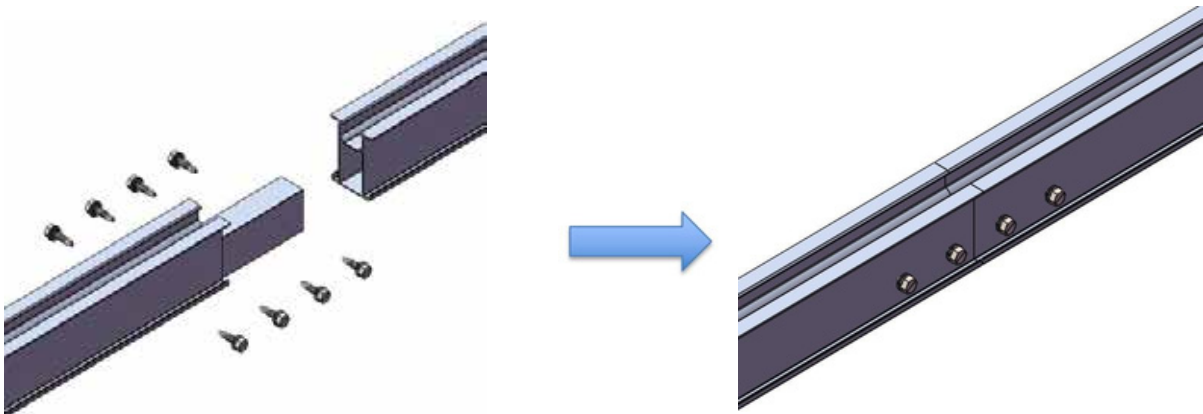
2.6: Drill to the expansion bolt to the existed concrete block.



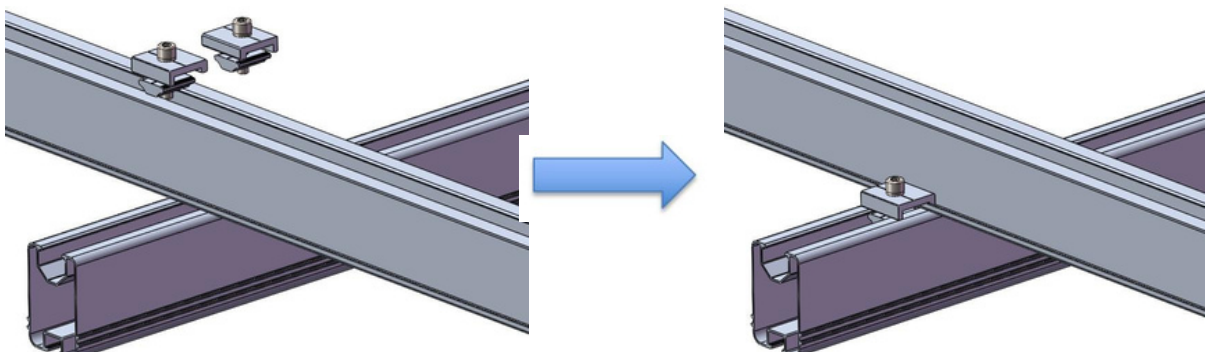
Completed :



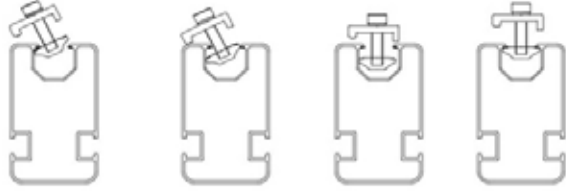
2.7: Use Rail Splice to connect 2 railing.



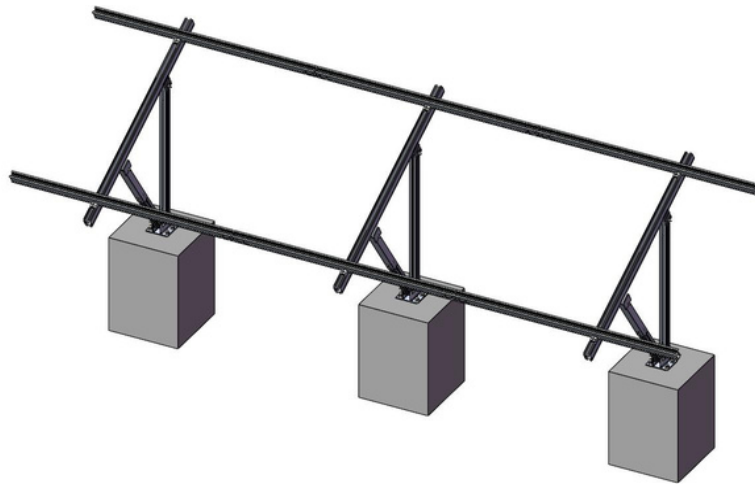
2.8: Use rail clamp to fix the railing to the beam.



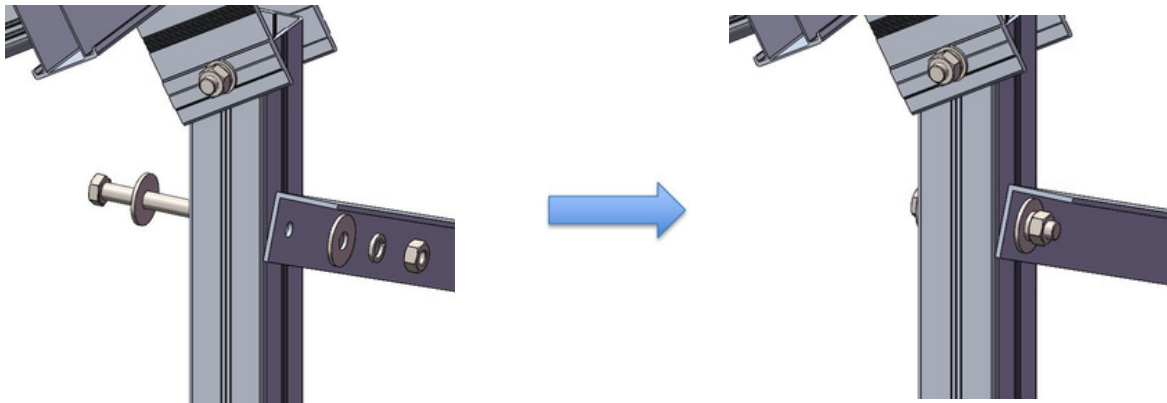
Tips : pls install the rail clamp as following steps



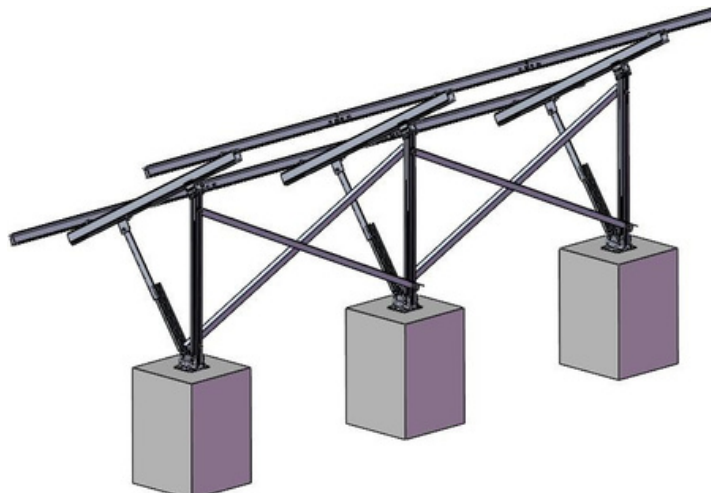
Completed :



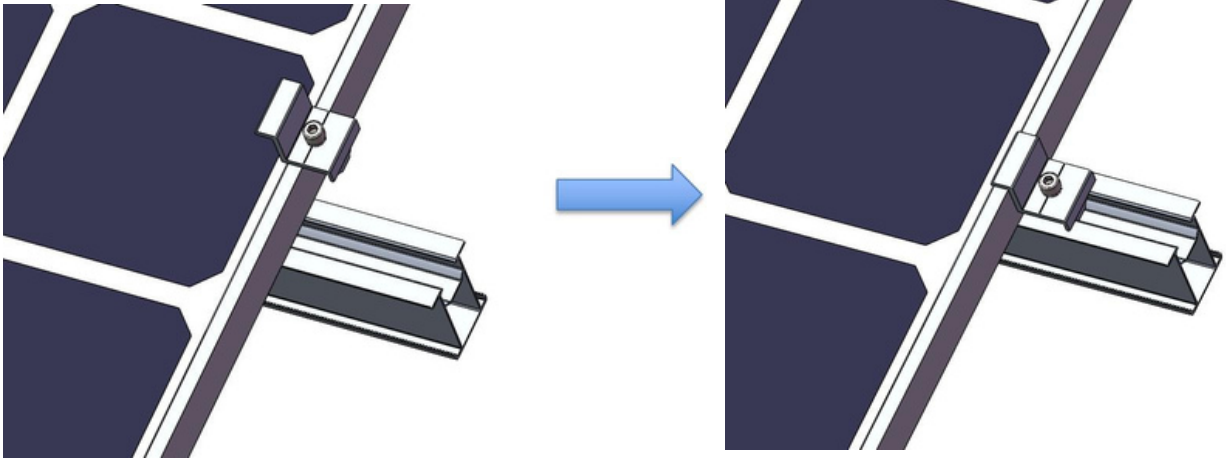
2.9: Install reinforcing beam



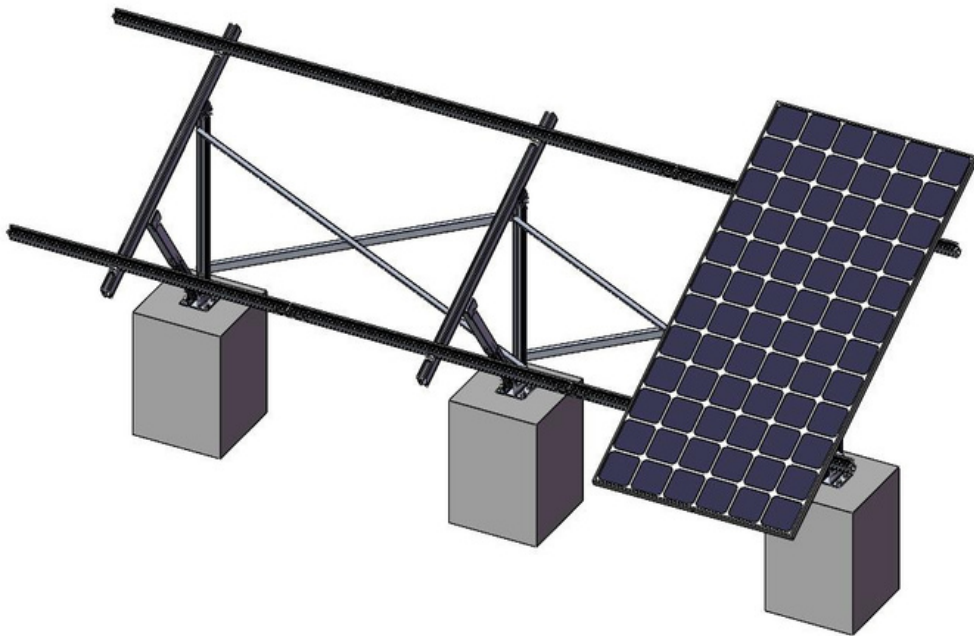
Completed :



2.10: Install End clamp

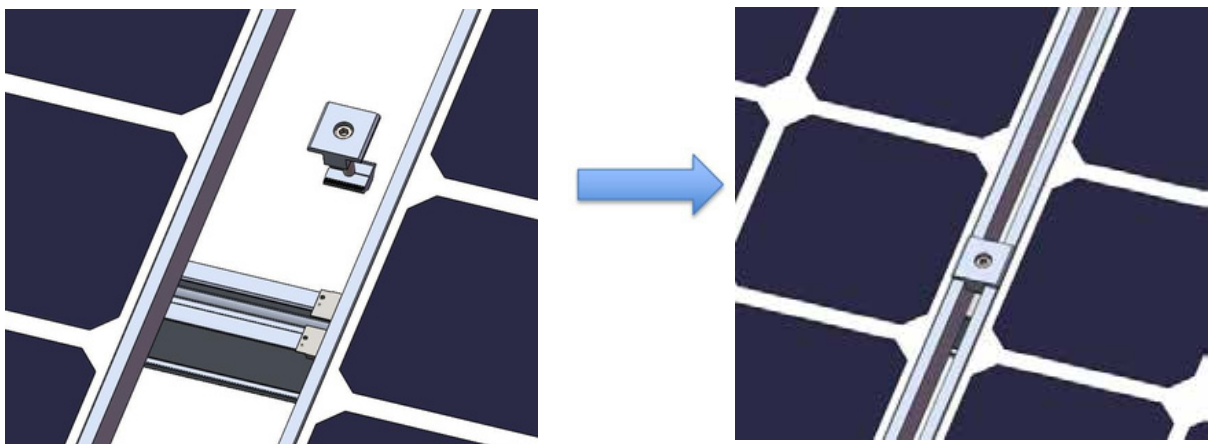


Completed :

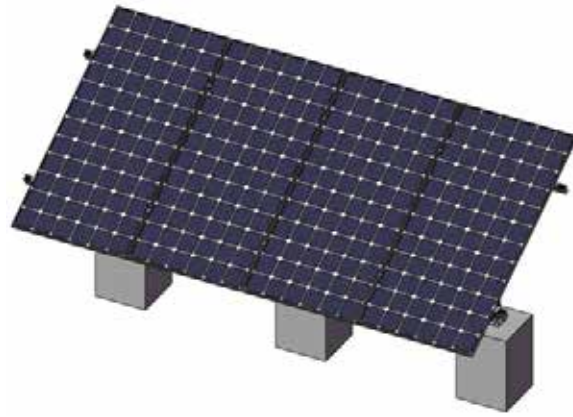


2.11 : Install Mid clamp,Earth Clip

①:Put earth lug under mid clamp,and then fix the solar panel.



Completed :

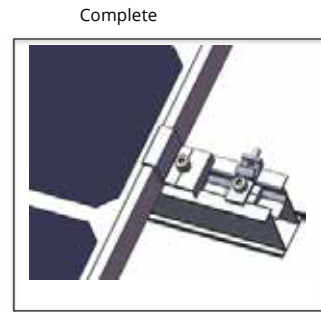


Earth lug will break the oxidation film of rail and panel to conduct electricity

2.12 Install Earth Clip ,Rail Cap , Beam Cape

②:
:

Solar Accessories How to **install**



Completed :

