

1. Preparation

1.1 Safty

Please use the following tools and pay attention to safety during construction



Safety Clothing



Safety Shoes



Helmet



Safety Glasses



Goggles

1.2 Tools



Allen wrench
M8-M12



Wrench
M8-M12



Twist Wrench
M8-M12



Electric Rotor



Awning Turned



Electric Screw



Tape Measure



Rope



Wood Hammer

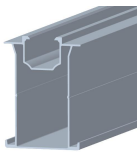


Outer hexagonal bolt	Type of sleeve :	Inner hexagonal bolt	Type of sleeve :
ST6.3	10mm sleeve	M8	6mm hexagon wrench
M10	16(17)mm sleeve		
M12	18(19)mm sleeve		

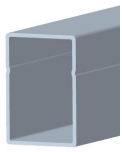
If there is another type of bolt,pls use other sleeves

Sleeve

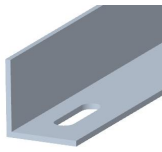
1.3 Solar Accessories



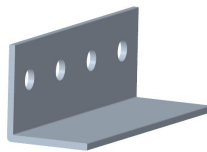
Rail



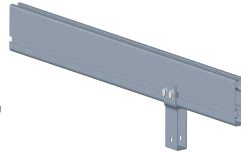
Rail Splice



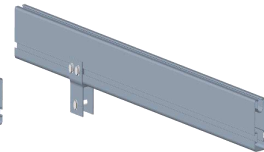
Reinforcing Beam



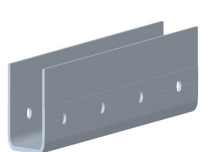
Reinforcing Beam Splice



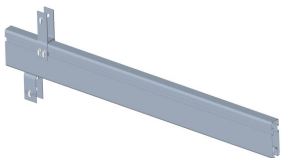
Pre-assembled Beam 1



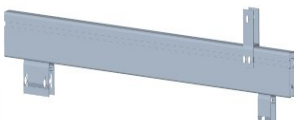
Pre-assembled Beam 2



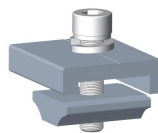
Beam Splice



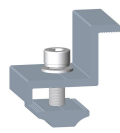
Pre-assembled Beam 3



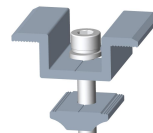
Pre-assembled Beam 4



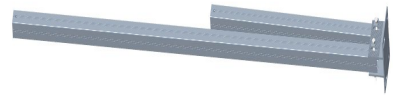
Rail Clamp



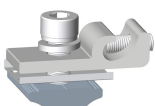
End Clamp



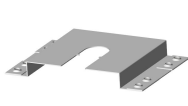
Mid Clamp



Pre-assembled Pillar



Earth Clip



Earth Lug



Wire Channel



Wire Channel Loop



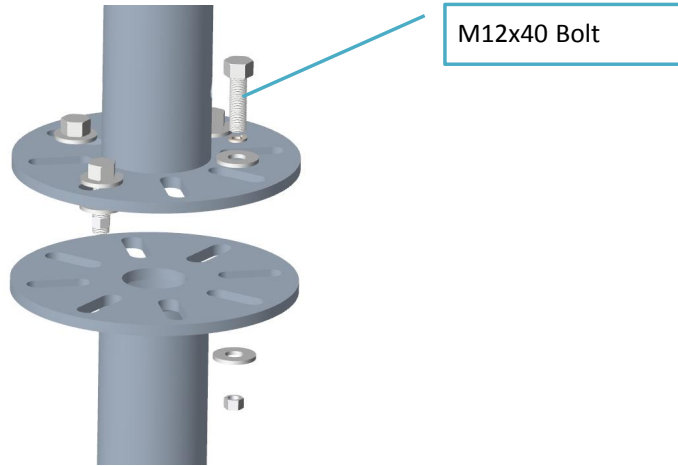
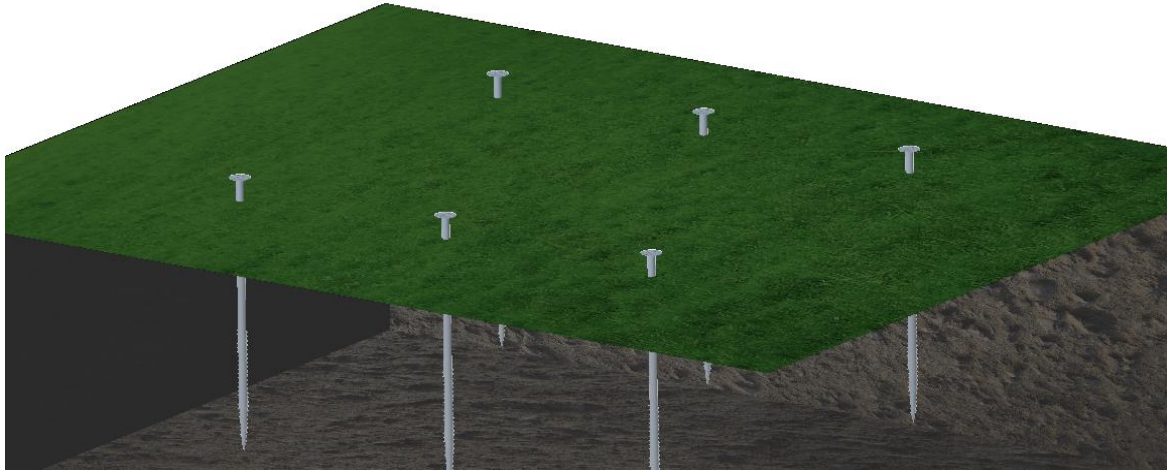
Rail Cap



Beam Cap

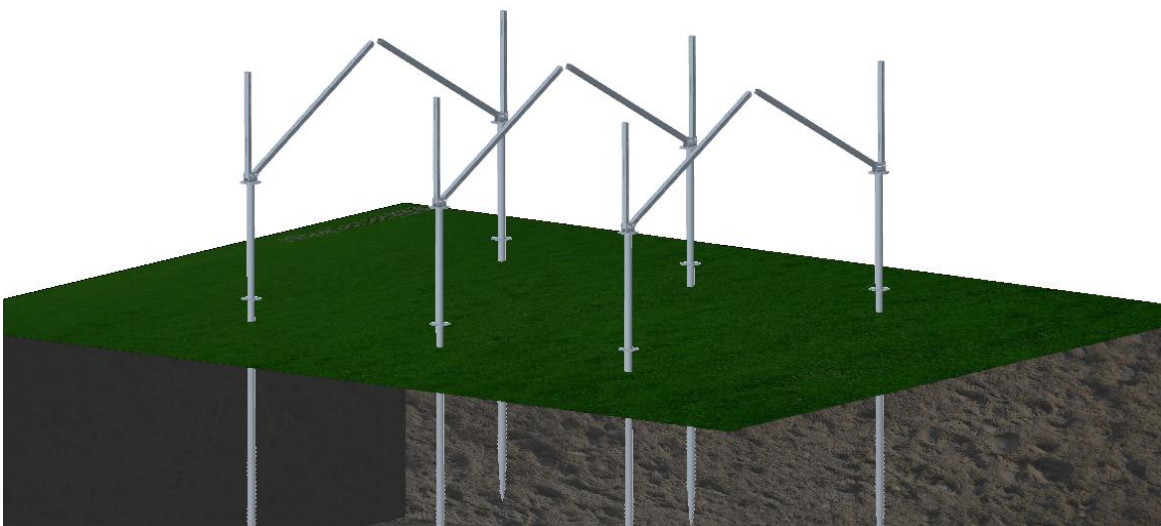
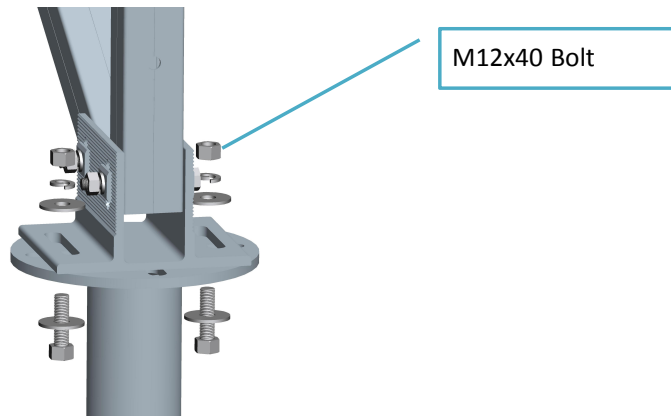
2. Installation

2.1: Refer to the drawing to install Double Flange Ground Screw foundation

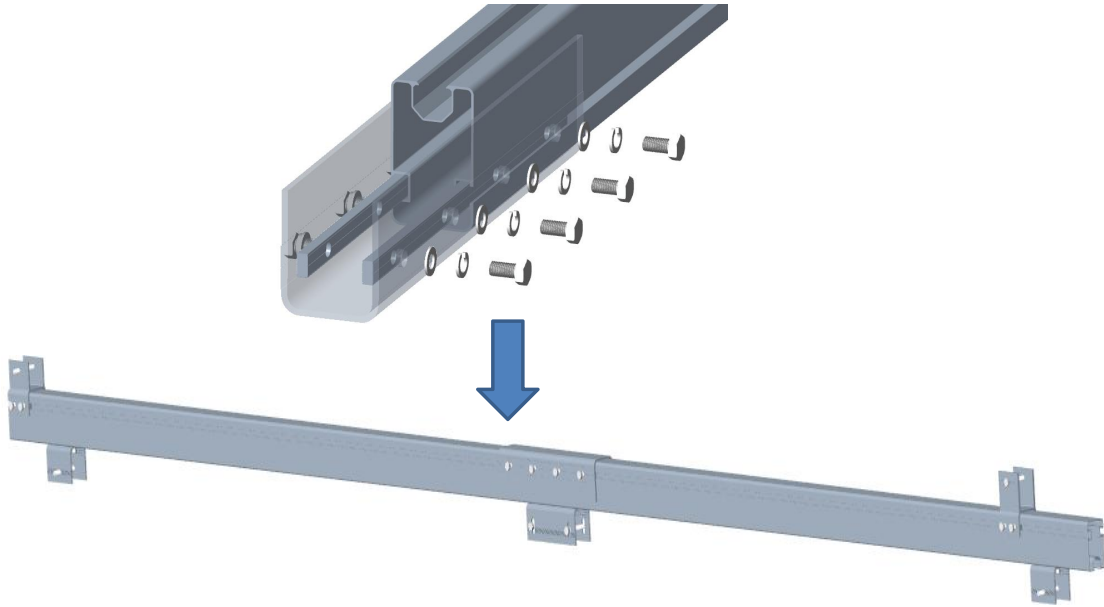


2.2: Install Pre-assembled Pillar to the base and install the Pre-assembled Pillar Beam

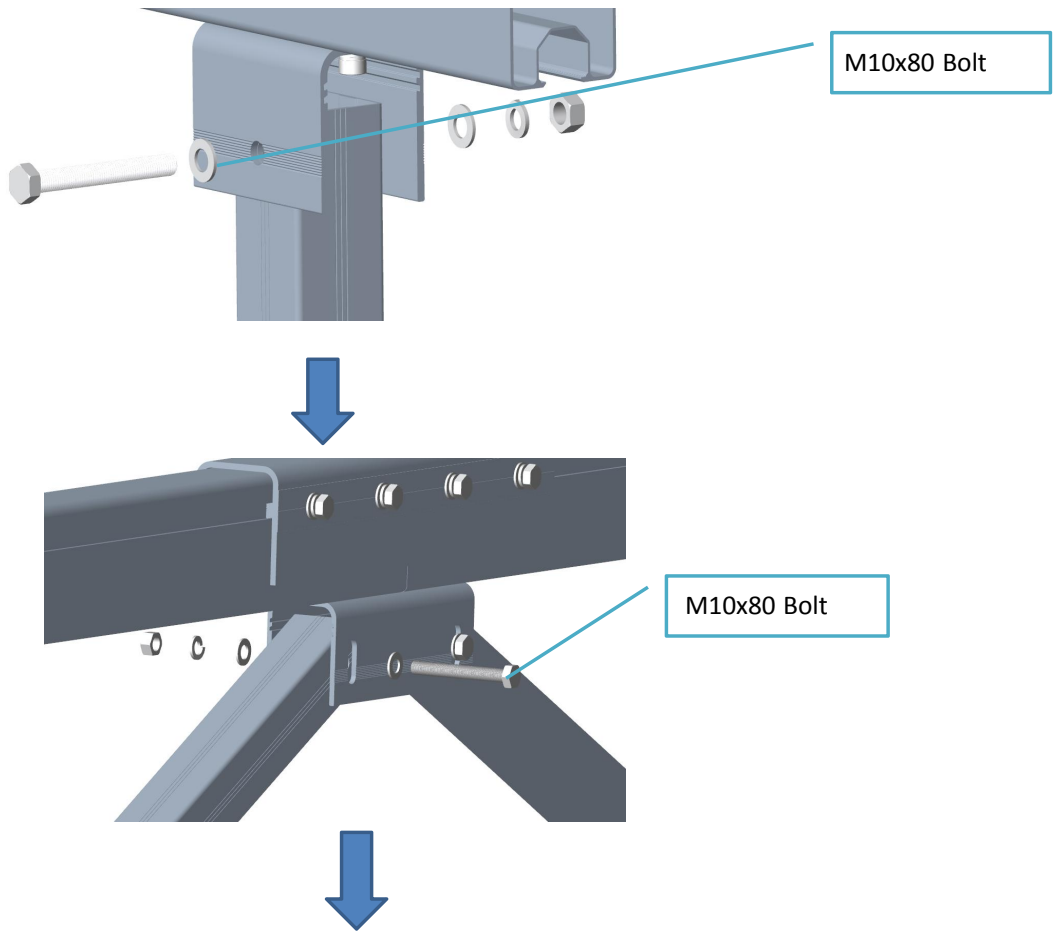
Refer the drawing to fix the corresponding pillar on the base.
Fix the reinforcing pillar to the splice of the pillar and splice of the beam



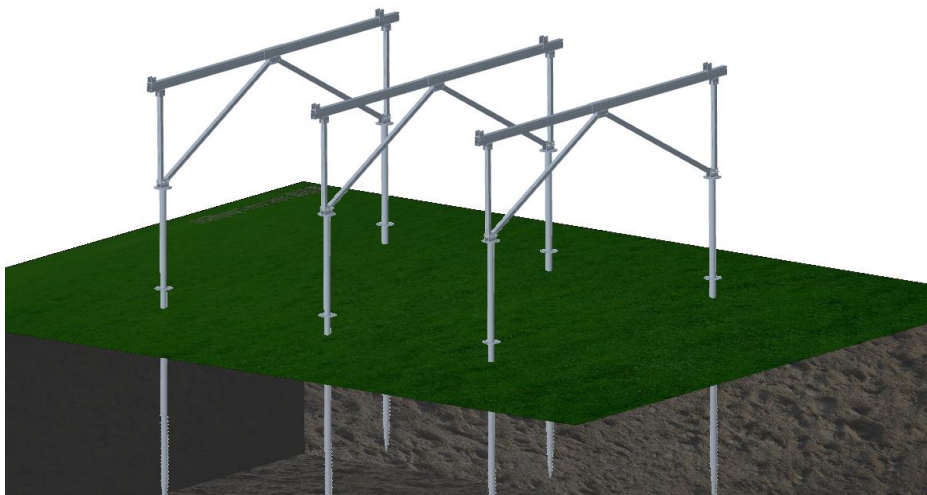
2.3: Install Pre-assembled Beam 3 and 4



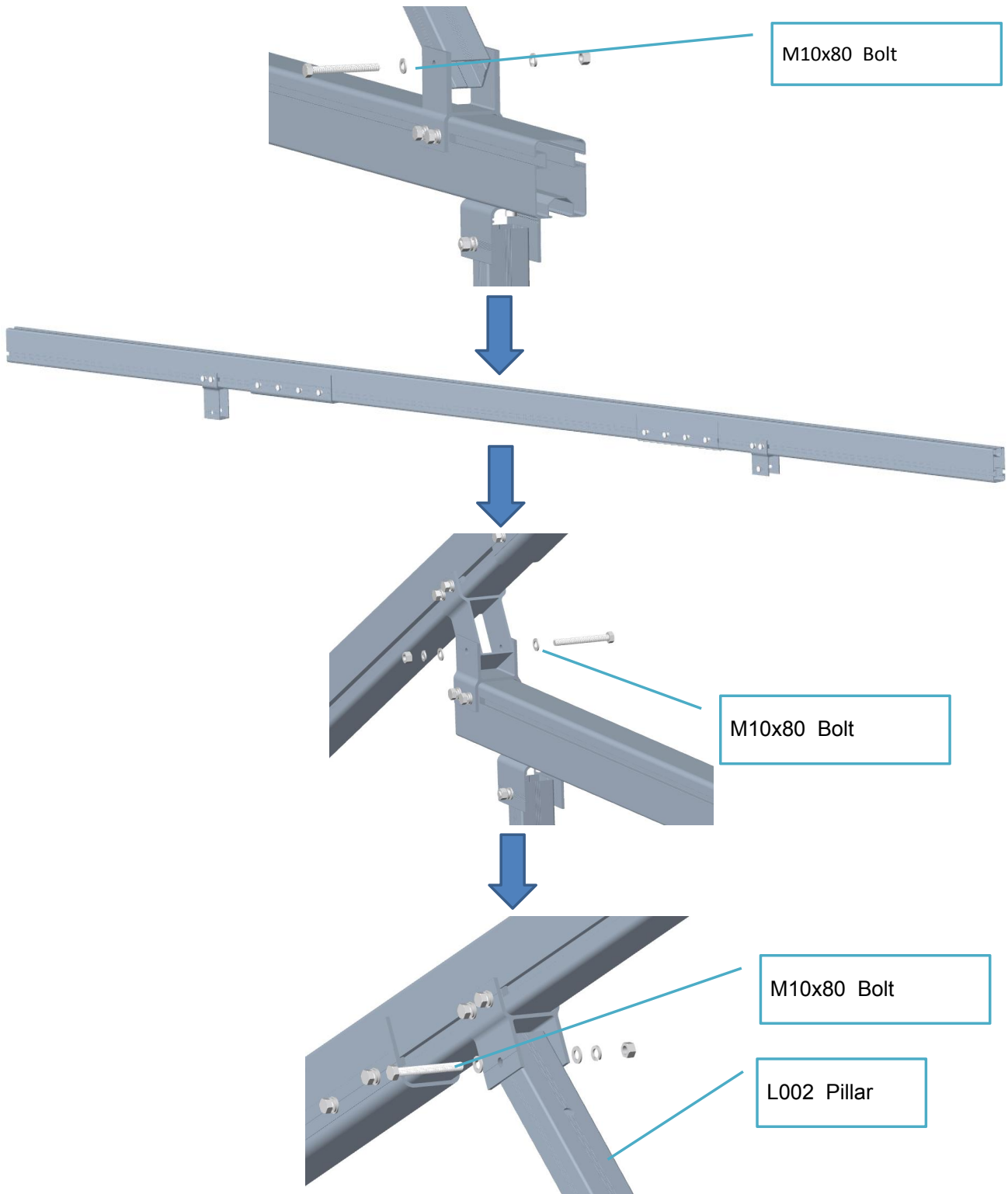
2.4: Install Pre-assembled Beam 3 and 4 to Pre-assembled pillar



Finished



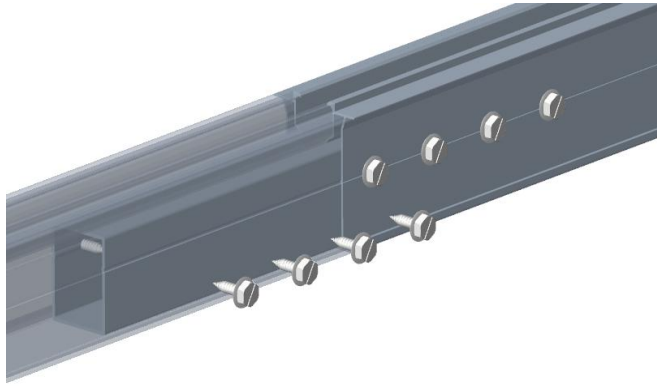
2.5 Install Pre-assembled Beam 1 and 2



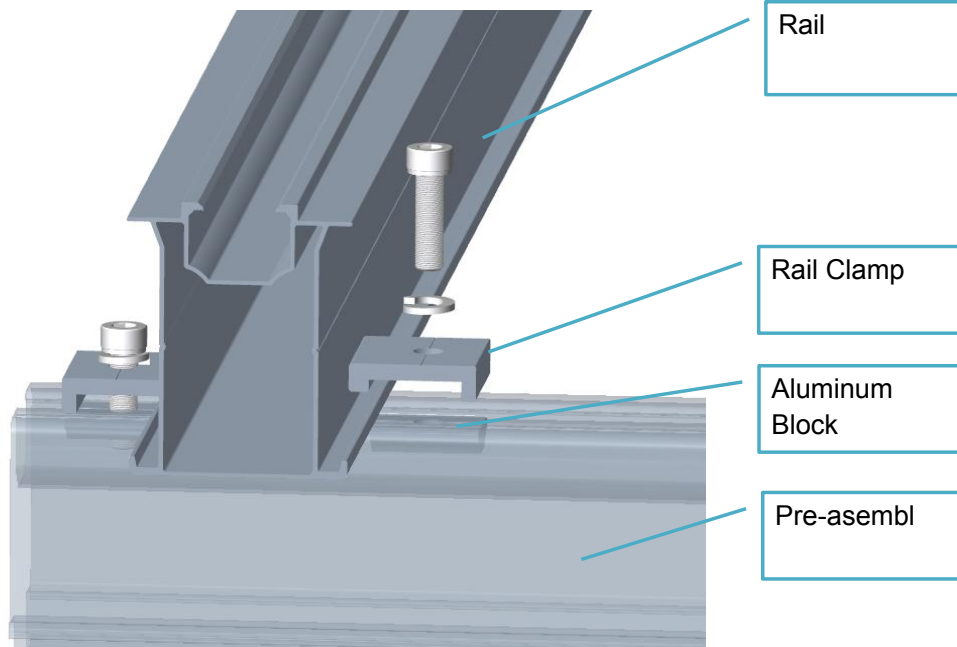
Finished



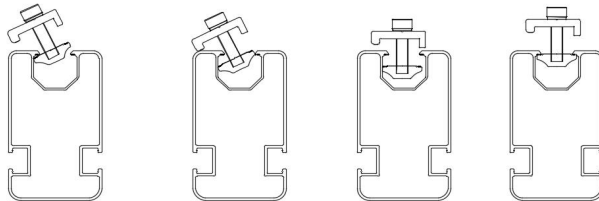
2.6 Use ST6.3x25 self-drilling screws to install railing



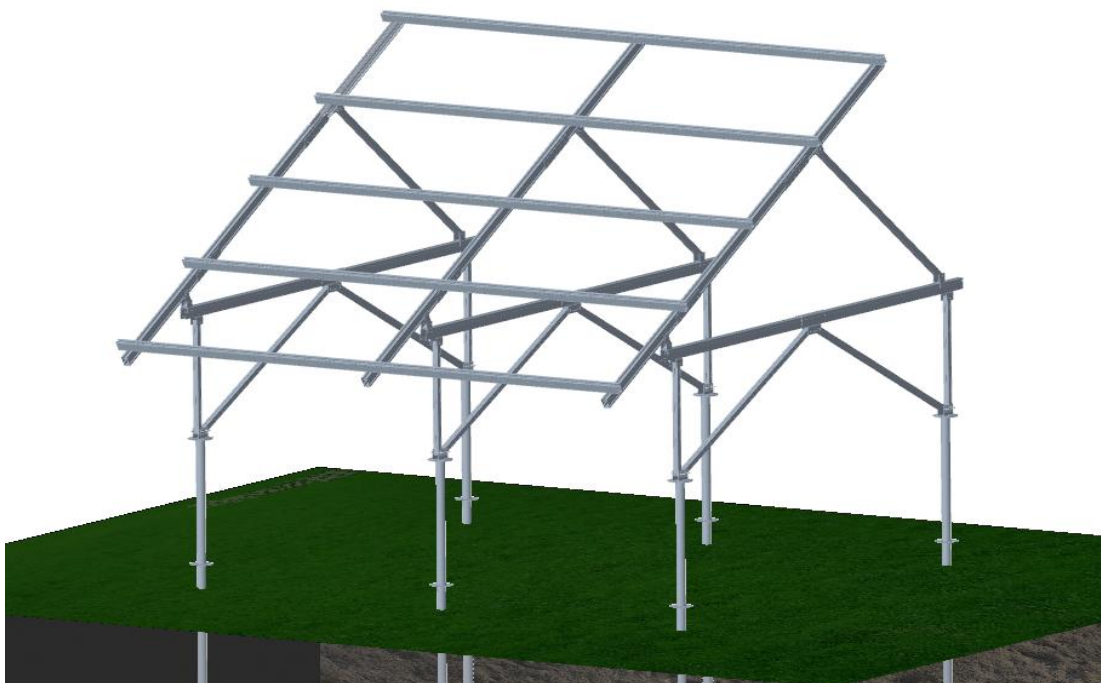
2.7 Refer to the drawing to install the railing to Pre-assembled Beam 1 and 2



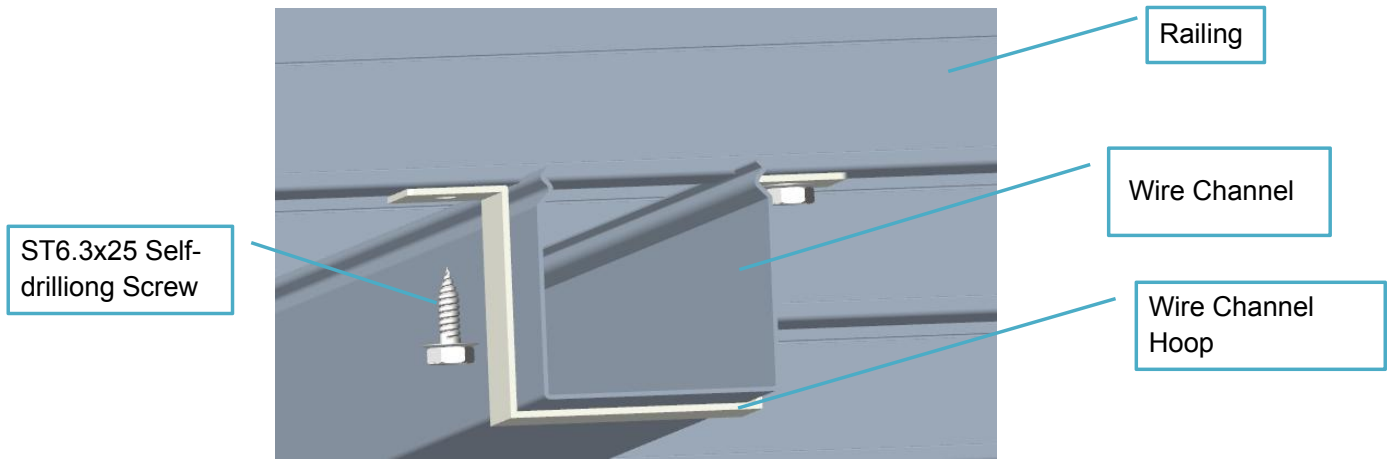
Tips: pls install the rail clamp as following steps



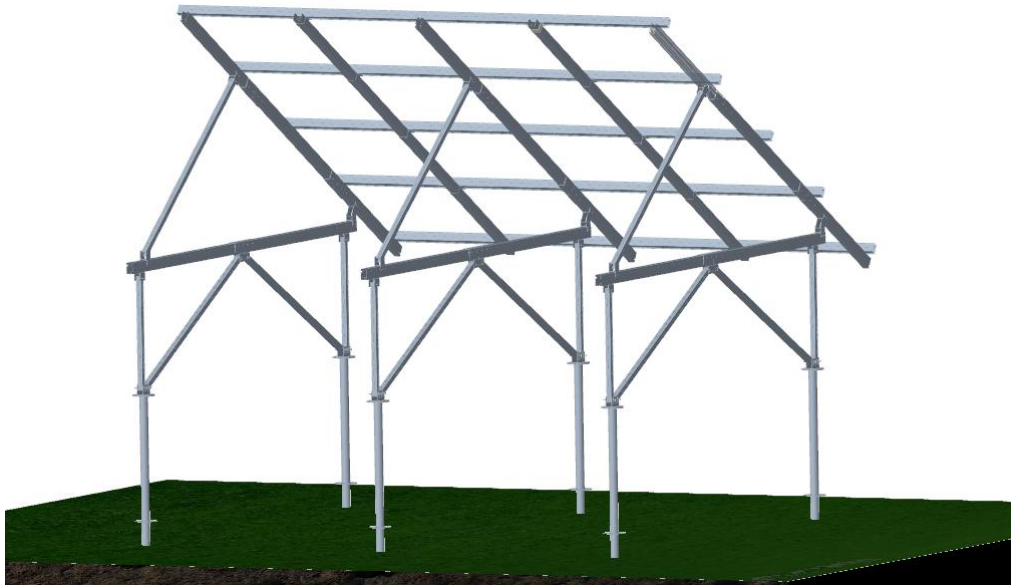
Finished



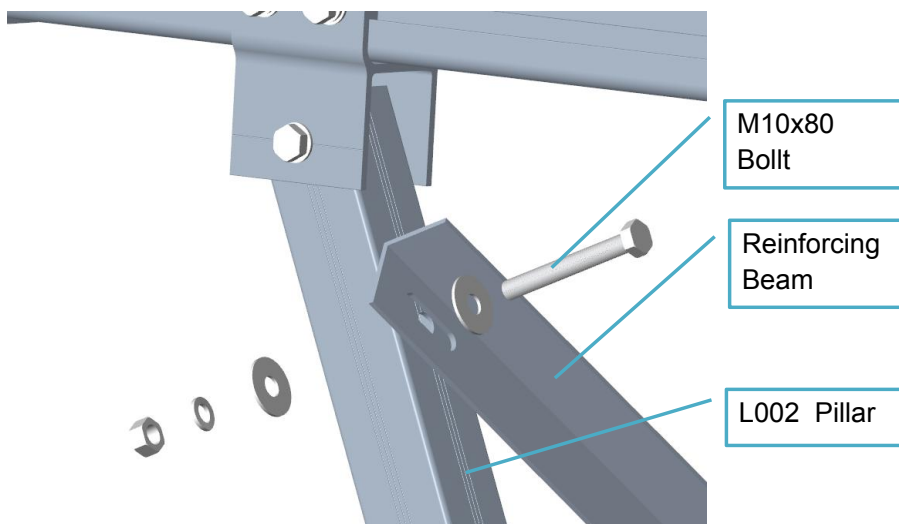
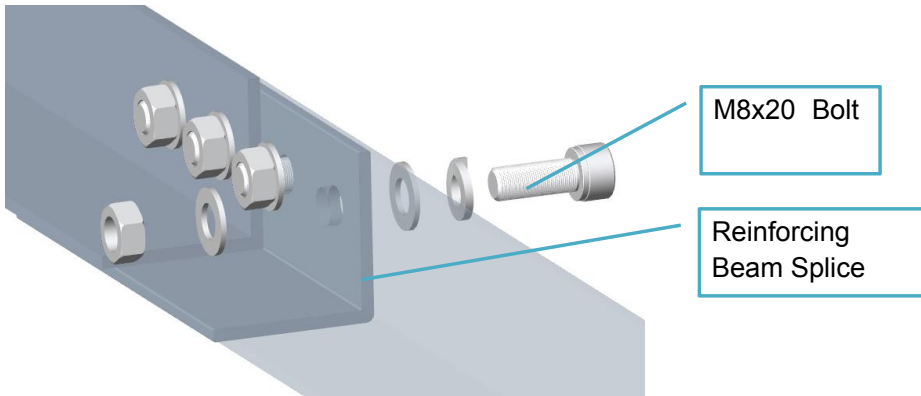
2.7 Refer to the drawing to install Wire Channel



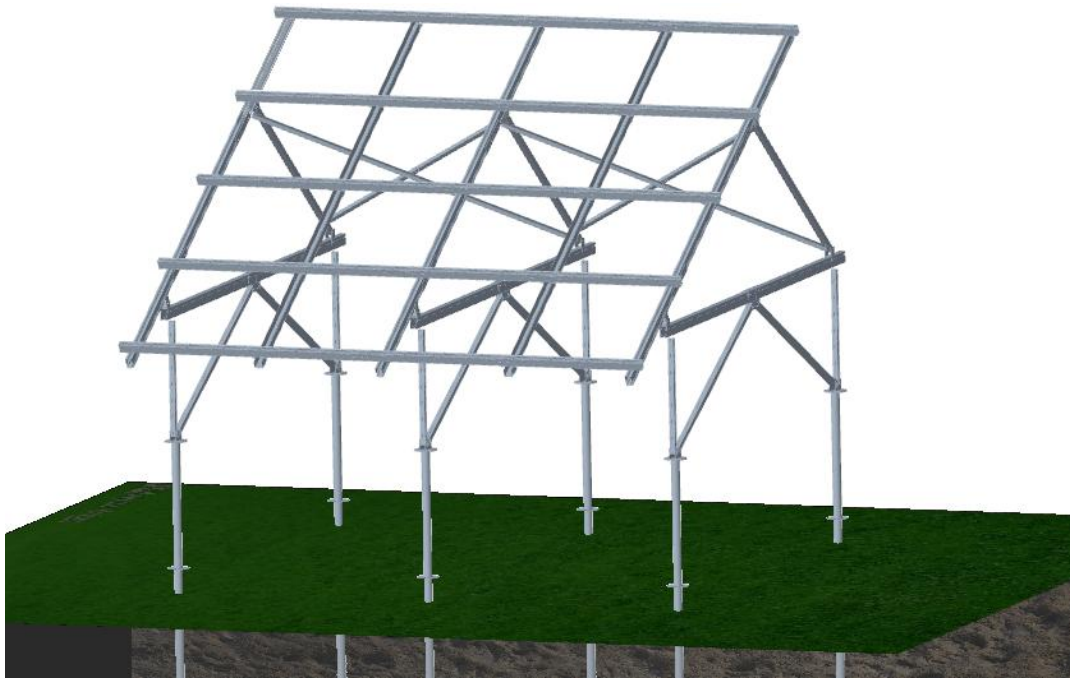
Finished



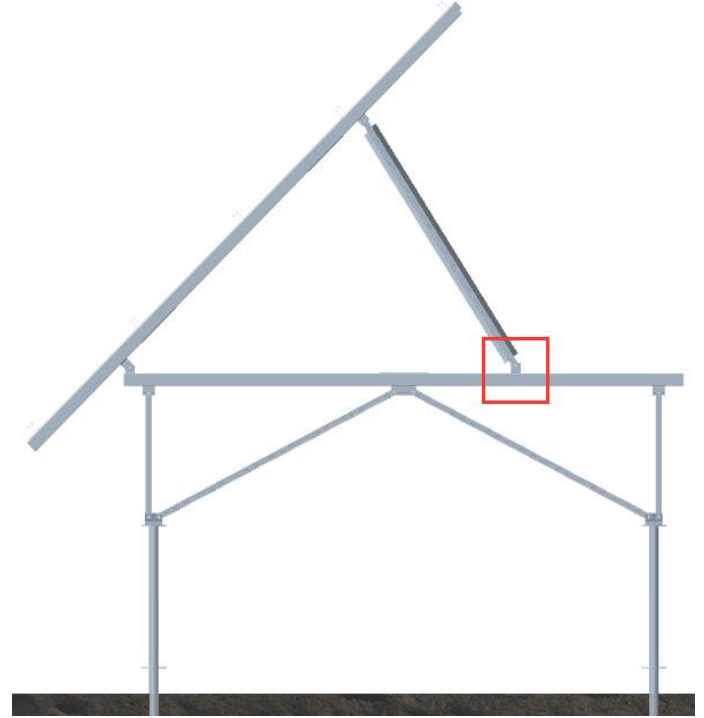
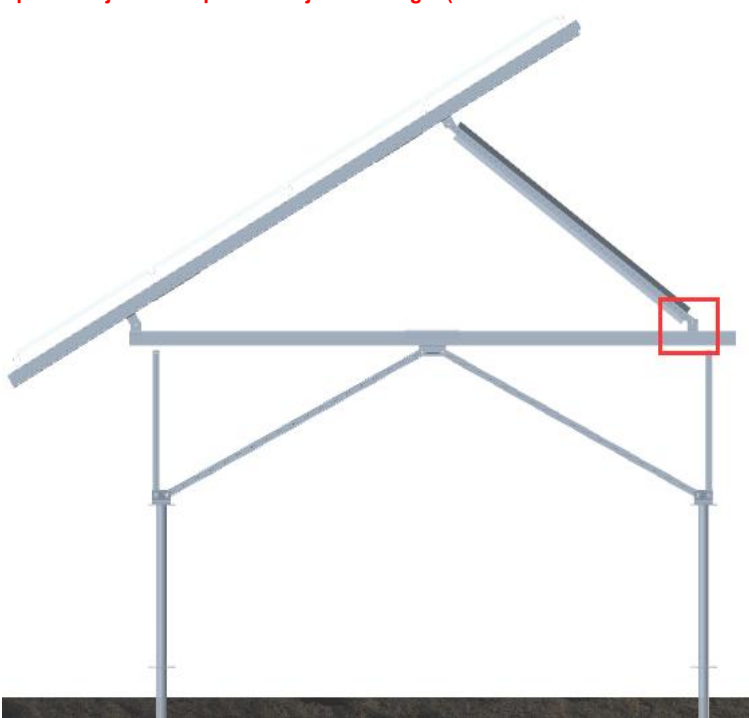
2.8 Install the reinforcing beam



Finished

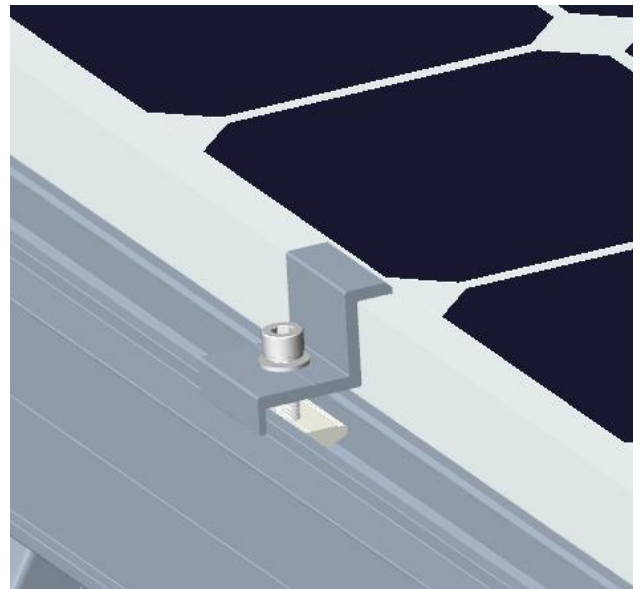
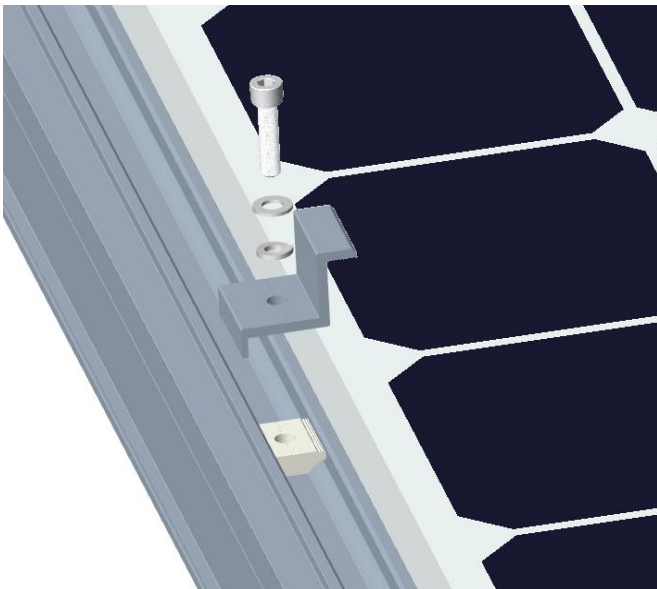


Tips: Adjust this splice to adjust the angle (from 30° - 55°)

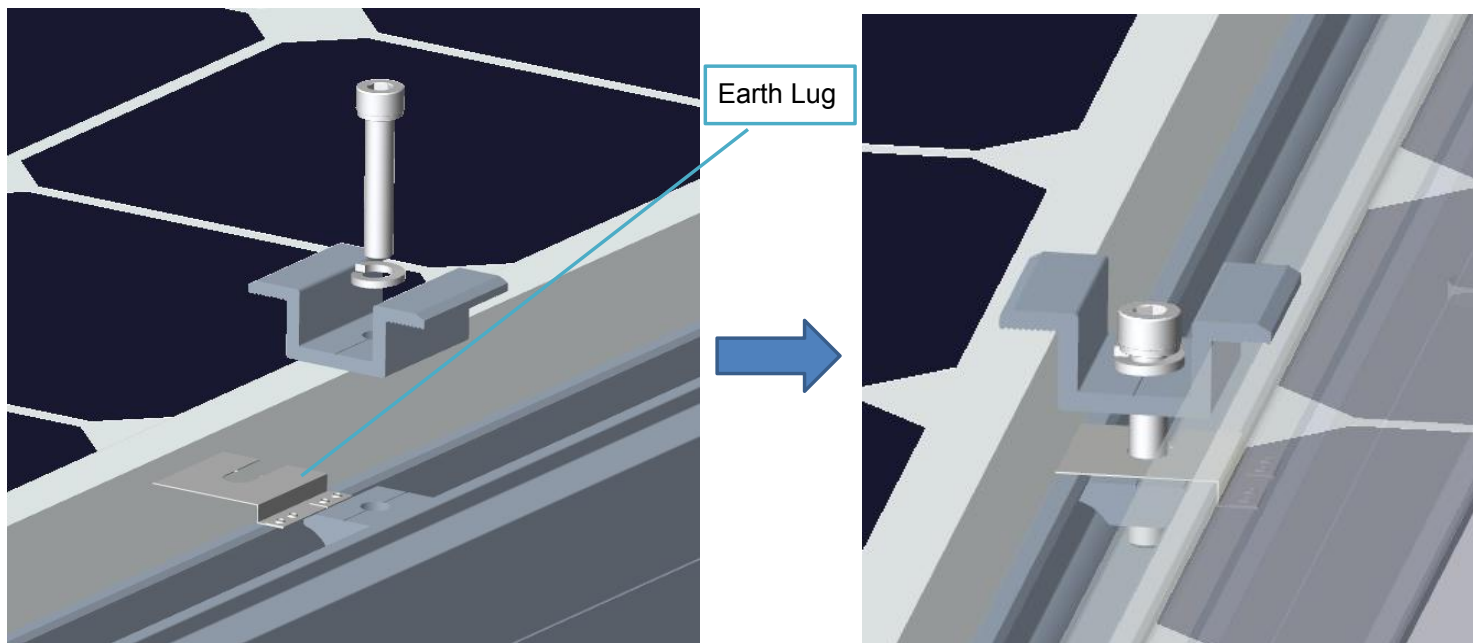


3.1 Install Solar Panel

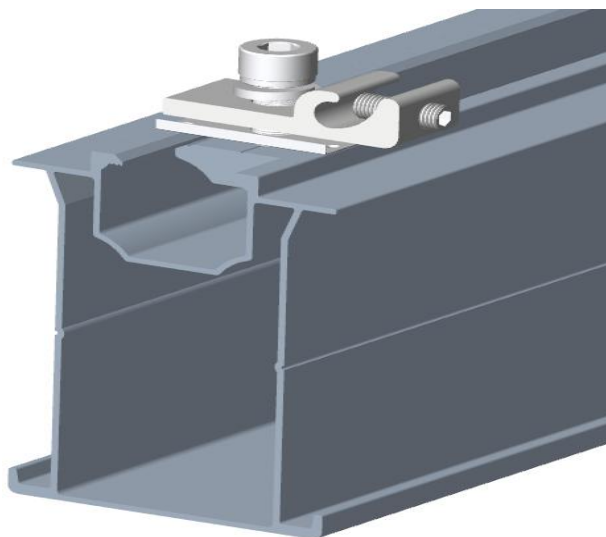
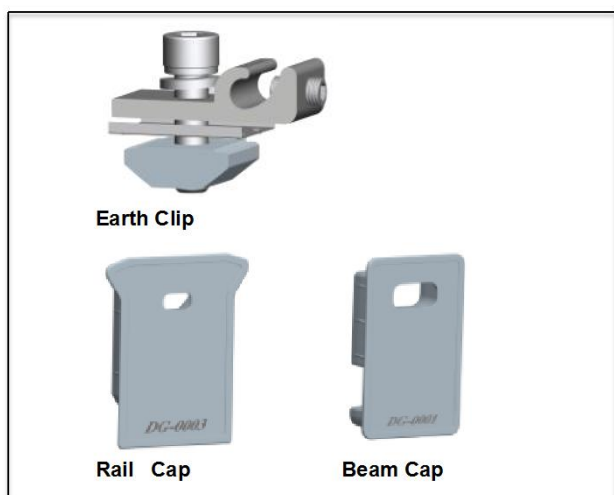
3.1.1 Install End Clamp



3.1.2 Install Mid Clamp



3.1.2 Install Earth Clip



Finished

