

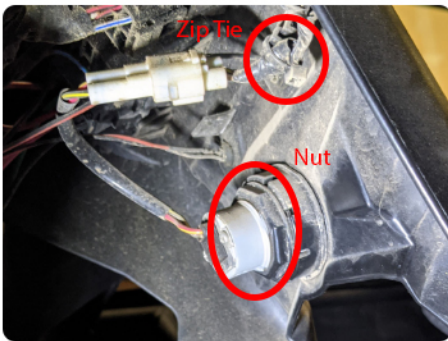
X3 Custom Center Console Mount Installation



Tools Needed

Cutting Tool: Saw/Reciprocating/hand Saw
Wire Cutters
Allen Wrench
Red Marker
Torx T-30
Philips and Flat Head
Drill
Hole Saw
Drink (Beer,WhiteClaw,Alcohol)

1. Start by removing the start button, loosen the nut on the back side and remove the small zip tie securing the straps.



2. Included in the kit is a template for marking the area on the console that needs to be cut. Cut the template and peel the sticker out. Align the template according to the arrows. Using a marker, mark the bottom of the template on your dash to create your cut line. And start to cut!



3. Once your cut is done, it should look like the image below.



4. Remove the lower Torx screws of the console.



6. Grab the RDM-RD and slide it in from the back side of the mount, and secure the radio with the bolts provided, one bolt on each side of the radio. Do not fully tighten.



5. Grab the new Mount and the brackets supplied. Secure the radio brackets and the intercom to the Mount using the Hex M6 bolts provided. Do not fully tighten just yet.



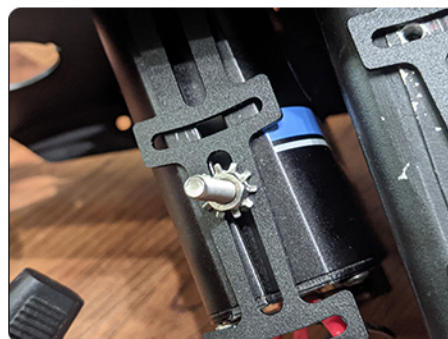
7. Tighten the M6 bolts on the front of the bracket. The rear radio brackets allow for pivoting for a parallel flush with the bracket, once you are happy with the alignment, tighten the radio bolts with the brackets. 1 bolt on each side will be good



9. Secure the intercom and brackets with the console mount. Align until happy and tighten the intercom and radio with the nuts provided and the M6 Hex bolts to the console



8. On to the intercom, grab the hex head bolts provided and the tooth washer position them in the brackets, and slide in the intercom on both sides.



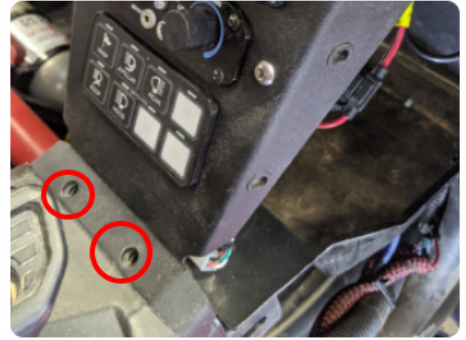
10. Secure your starter button or switchpro (depending on the kit you purchased) to the console.



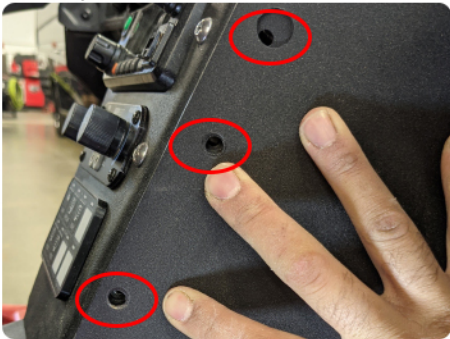
11. Remove the rear panel in the console and using a hole saw, cut the bracket in to be able to route your radio cables. You may need to make a bigger hole depending on wires



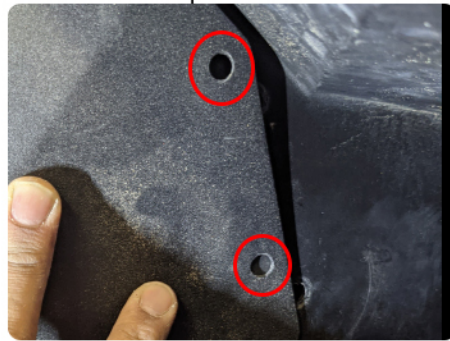
12. Using the T-30 screws from the original plastics, secure the complete mount with radios to the canam.



14. Grab the driver panel and secure it to the console using the 2 M6 hex bolts provided once aligned secure the top of the mount and the lower rear of the panel with the screws provided



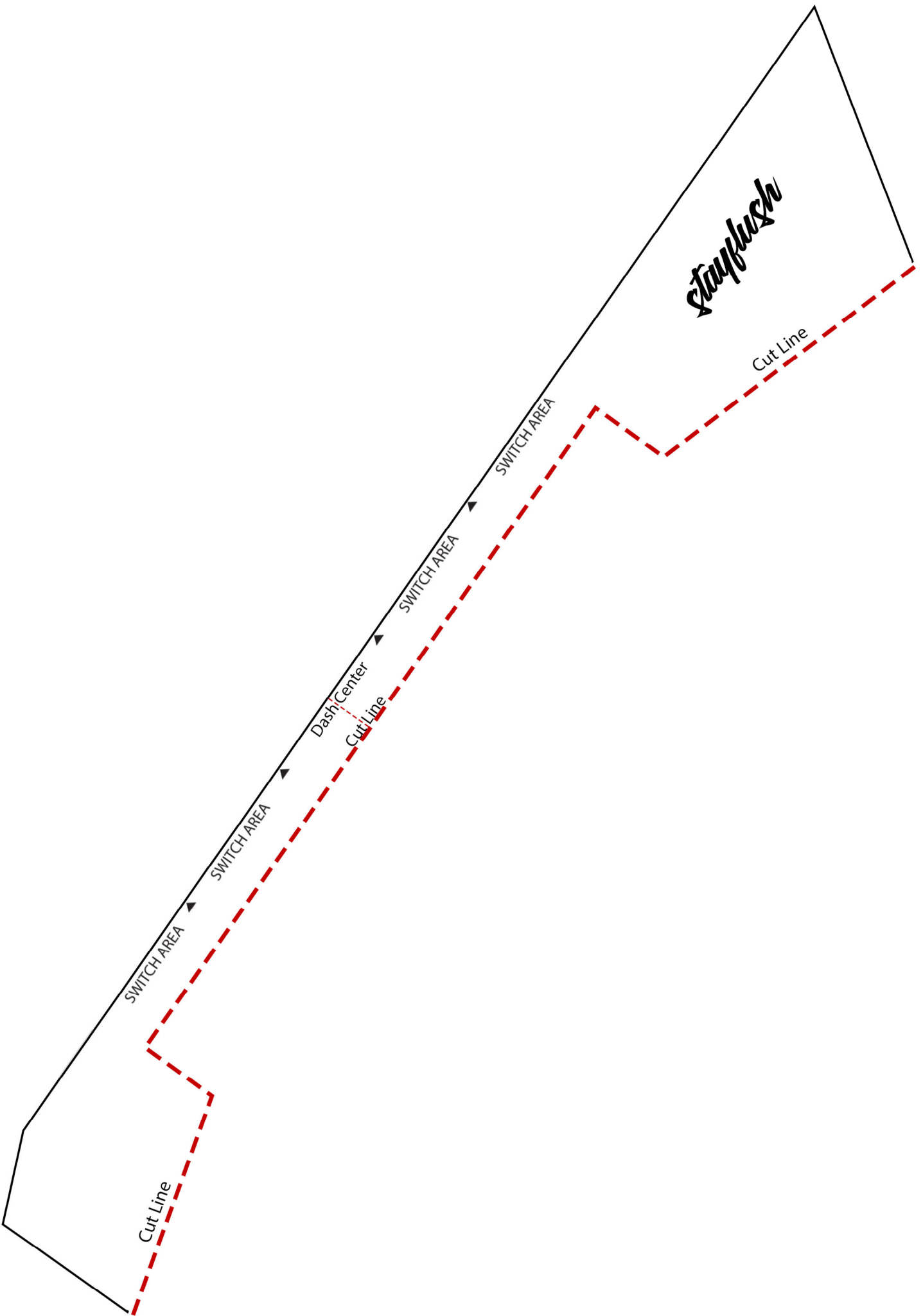
15. Repeat the process for the passenger side dont, remove the factory clip (we all know there a pain) once you have the console and panel bolted together, drill into the factory plastic with the screws provided to secure the rear panel



NOW GRAB A DRINK AND ENJOY THE BADASSERY YOU JUST INSTALLED



Feel free to reach out to me with any question or concerns or to tell me how awesome it came out! Please send in your pictures! Would love to hear feedback or concerns!
stayflushmotorsports@gmail.com



Stayflash

Cut Line

SWITCH AREA

SWITCH AREA

Dash Center

Cut Line

SWITCH AREA

SWITCH AREA

Cut Line