



Instruction Guide:
Transit
Hood Strut Kit

Checklist



- + REVIEW PACKING SLIP TO ENSURE YOU'VE RECEIVED ALL COMPONENTS**
- + PREPARE ALL TOOLS NECESSARY FOR PRODUCT INSTALLATION**
- + PRE-MEASURE DISTANCES OF ALL PRODUCT MOUNTING LOCATIONS**
- + CONFIRM CLEARANCES FOR OTHER INSTALLED BUILD COMPONENTS**
- + FOLLOW ALL SAFETY PRECAUTIONS WHEN WORKING ON THE VEHICLE**

Packing Slip



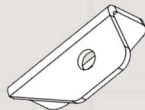
Components List

VNSPD-061-(SUBASSEMBLY#)

Upper Hood Strut Mount (Driver)

VNSPD-061-SA1

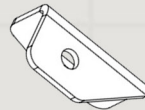
Quantity : x1



Upper Hood Strut Mount (Passenger)

VNSPD-061-SA2

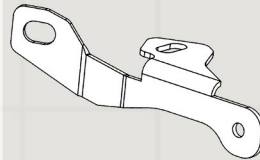
Quantity : x1



Lower Hood Strut Mount (Driver)

VNSPD-061-SA3

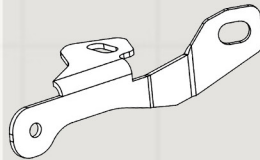
Quantity : x1



Lower Hood Strut Mount (Passenger)

VNSPD-061-SA4

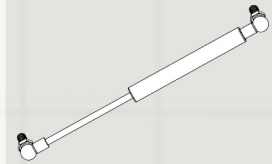
Quantity : x1



Gas Shocks

VS.245.90*85LB

Quantity : x2



Packing Slip



Hardware Kit

VNSPD-061-HK

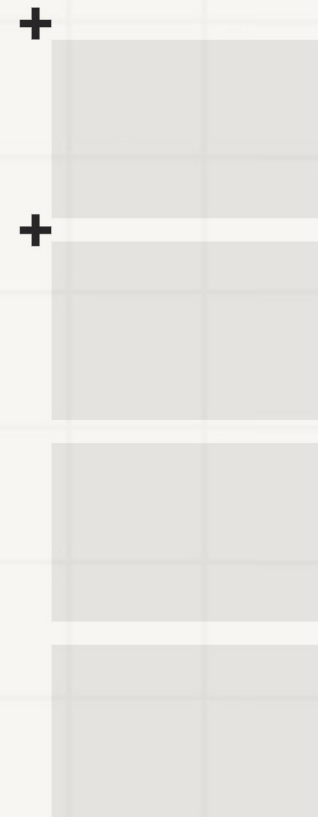
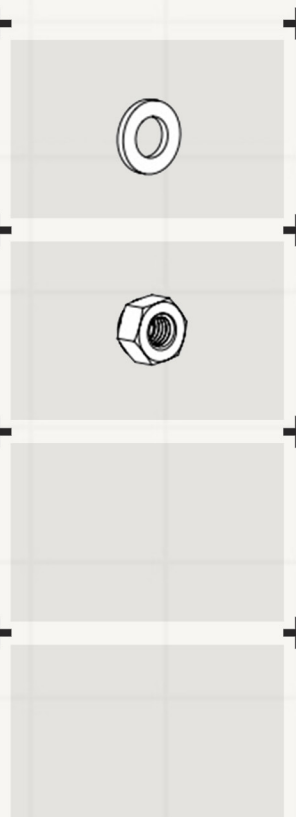
M8 Steel Flat Washers (13mm)

Quantity : x 4



M8 Nylon Lock Nuts (13mm)

Quantity : x 4



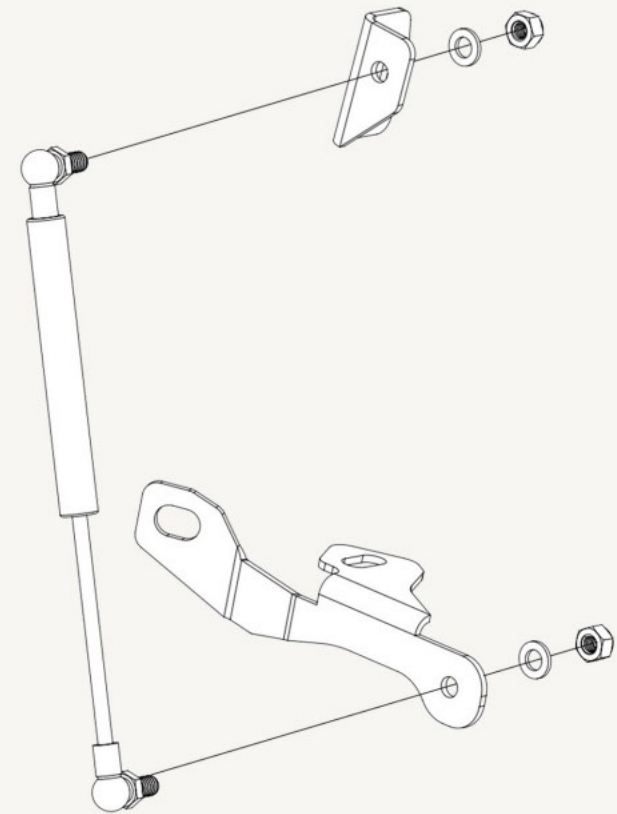
Step 01



Mount the Upper & Lower Strut Bracket to create the Hood Strut Subassembly

Using the (x2) 13mm steel flat washers and nylon lock nuts (one nut & washer on each stud), mount the upper & lower mounting brackets to the two outward-facing studs on the Hood Strut

Note* Creating this subassembly before installing on the vehicle will make the following sequence go more smoothly



Hardware:



Step 02



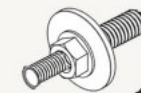
Mount Lower Bracket to Front Hood Hinge Stud & Top Core Support Point using factory hardware

On the vehicle's driver side, using the factory 13mm flange bolt, fasten the Lower Bracket's rear mounting point to the Front Hood Hinge Stud. Using the 10mm flange bolt, fasten the Lower Bracket's upper mounting point to the top of the vehicle's core support.

Note* You will need to remove & reinstall the factory hardware to complete this step



Hardware:



x1 (OEM)



x1 (OEM)



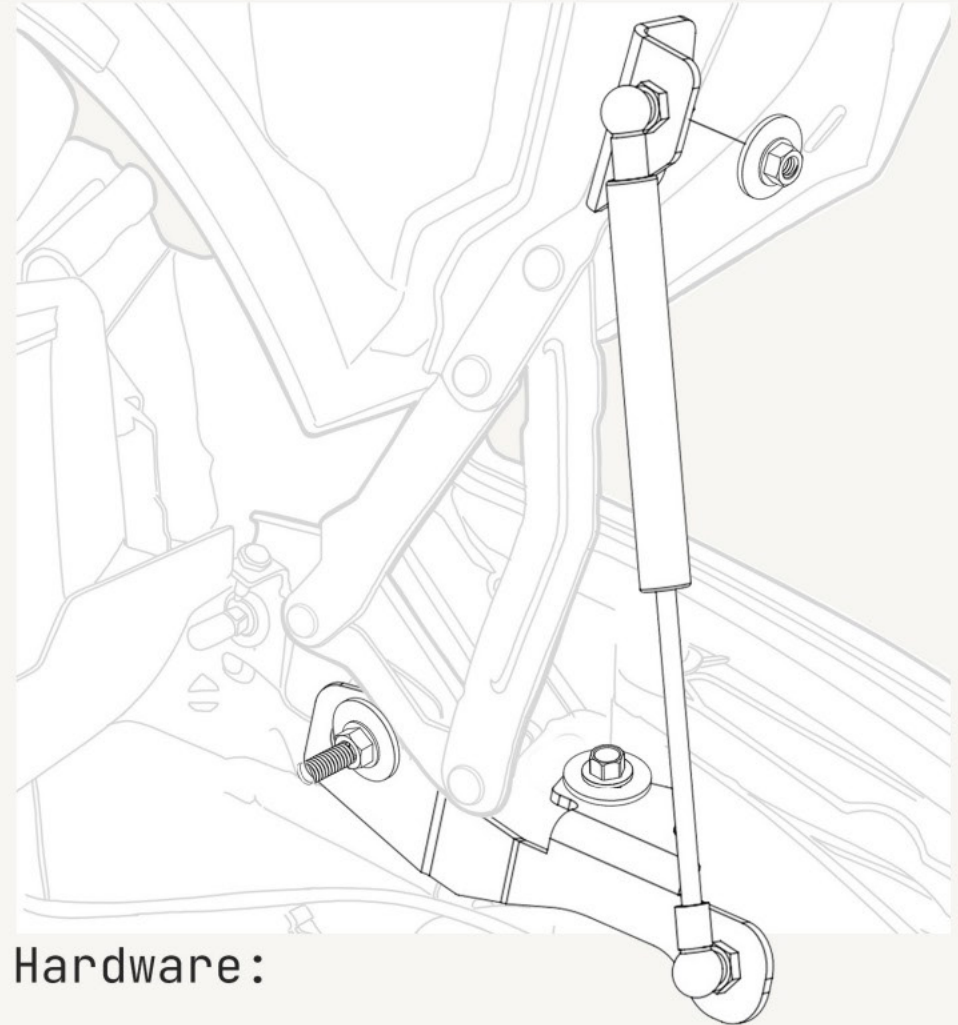
Step 03



Mount Upper Bracket to Lower Hood Stud using factory hardware

Using the factory 13mm flange nut, fasten the slotted channel of the Upper Bracket to the Lower Hood Stud.

Note* You will need to remove & reinstall the factory hardware to complete this step



Hardware:



x1 (OEM)



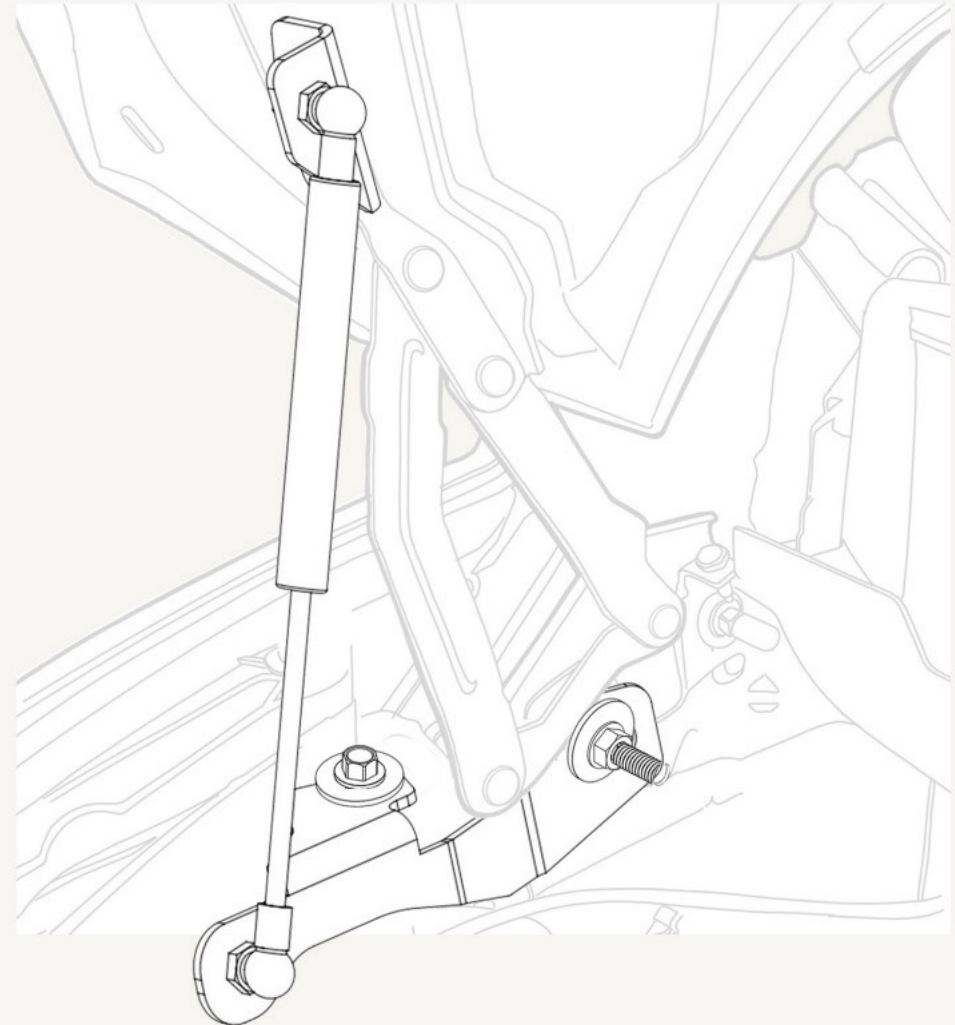
Step 04



Mirror Steps 01-03 on the vehicle's passenger side

Once the driver-side hood strut has been installed, repeat the same process on the vehicle's passenger side.

Note* Passenger-Side Upper Bracket will use the same Lower Hood stud, but the position of the bracket's slotted channel will be less high up than the Driver-side. This height differential in bracket positioning is normal and shouldn't impact the symmetry of the factory body panel alignment



You've Reached the Finish Line

