



Kintsugi:

The Ancient Japanese Aesthetic Of Sustainable Upcycling



<https://kintsugilabo.com>

A Memorable Kintsugi For You



Repaired by Japanese Traditional Kintsugi



The Kintsugi Labo JAPAN



We will repair your cherish bowl.



Flatten the cross section of the broken piece with a metal file.



Sand all pieces in the same way.



Apply Japanese natural lacquer to all cross sections and wipe off excess.





Dry in a dedicated room

Mugi-urushi



These materials are water, Japanese natural lacquer and wheat flour.
These are mixed and used to join the pieces together.



All the broken pieces are joined together by applying Mugi-urushi to the cross section of them.





Use tweezers to join even the smallest pieces.



Join in order, and allow to dry in a dedicated room for 2 weeks.



Carefully remove excess
with a carving knife.

Kokuso-urushi



These materials are water, Japanese natural lacquer, wheat flour and Zelkova powder.



These are mixed and used to fill in the large grooves on the vessel.



After drying, the excess is scraped off.



The fine portions are scraped off with a special soft charcoal for lacquering.



Sabi-urushi



These materials are water, Japanese natural lacquer and clay dry powder.



These are mixed and used to fill in the fine grooves on the vessel.



After drying, scrape off the excess again with charcoal.





Primer coat of urushi to fix gold powder flat and evenly in the final step.



Apply and dry a few times.



Intermediate coat of urushi just before sprinkling gold powder



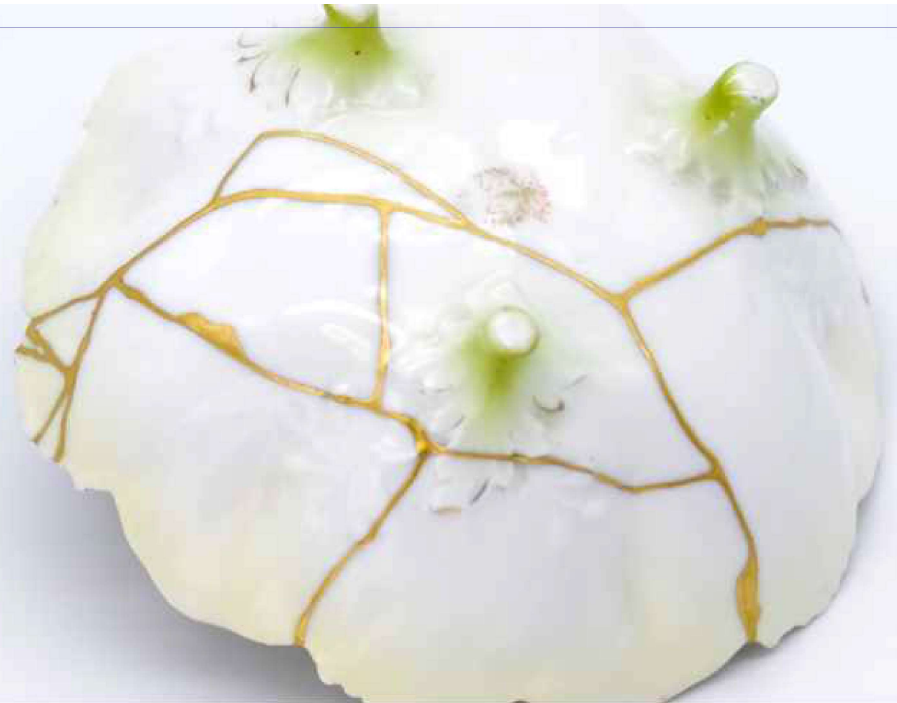
This is 24-karat gold in powder form.



Sprinkling gold powder over the joined part.



The tusks of the fish called "sea bream" are used to polish to make a gold luster.



Finally, it's done!
3 months for repair



Thank you so much!



**Kintsugi Artist
Nobuyasu Suginaka**



**Kintsugi Couple
Michie & Ken**

Wish your family serves this Kintsugi piece for many years to come.