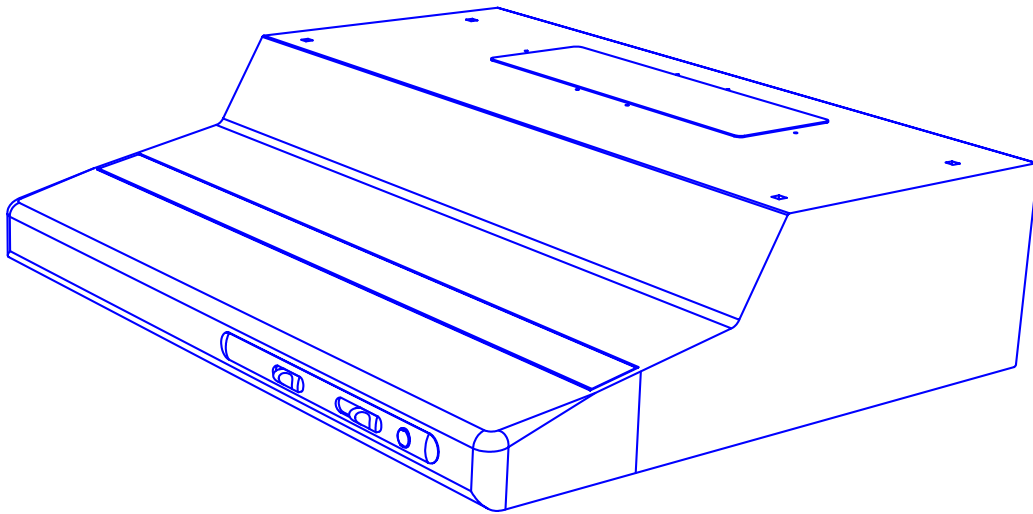


SL -SERIES

 **Robinhood**

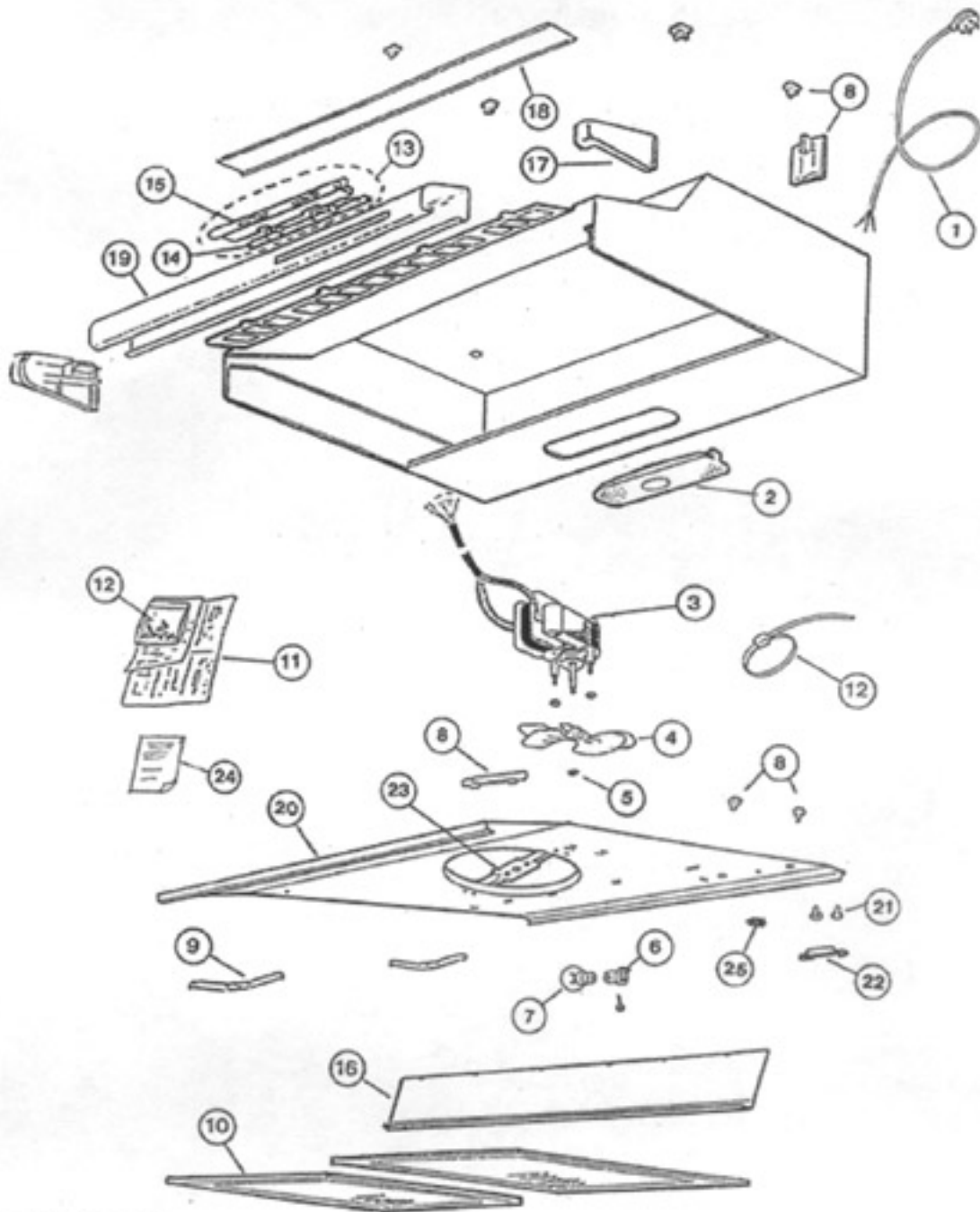
**SLIMLINE**



**RANGE HOOD FIXED  
MODEL  
SL6WH, SL6BL, SL6SS  
SL9WH, SL9BL, SL9SS**

SL -SERIES

SL -SERIES



600 MODEL

APPROVED  
ISSUE: B  
07/18/0098

## SL -SERIES

### 600 MODEL

	SLIMLINE 600mm			
ITEM	DESCRIPTION	SL6WH	SL6BL	SL6SS
1	Power Cord	103821	103821	103821
2	Diffuser	101112	101112	101112
3	Motor 3 sp. UPPCO	103674	103674	103674
4	Fan Blade d shaft	102283	102283	102283
5	E-Clip	999084	999084	999084
6	Lamp Holder	101104	101104	101104
7	Lamp Round 40W	101191	101191	101191
8	Cord Entry Family	102549CL	102549CL	102549CL
9	Filter Spring	101221	101221	101221
10	Filter Aluminium Filter Charcoal x 2	103793 103793C	103793 103793C	103793 103793C
11	Installation Instructions	102804	102804	102804
12	Mounting hardware kit	100651	100651	100651
13	Assy. 3 Spd Switch	103417WH	103417BL	103417BL
14	PCB Assy. 3 Spd Switch			
15	3Sp switch Family			
16	Rear Cover	101062WH	101062BK	101062BK
17	Corner Moulding L&R	101160WH	101160BL	101160BL
18	Exhaust Cover	101066WH	101066BK	103229SS
19	Front Panel	101092WH	101092BK	103228SS
20	Motor Housing*			
21	Closed End Connector	102321	102321	102321
22	Cable Clamp	102554	102554	102554
23	Motor Bracket	102274	102274	102474
24	Instructions Slimline	101322	101322	101322
25	Washer M5 Ext.lock	999085	999085	999085
	Fingerguard	103943	103943	103943

NOTE; \*some cabinet parts not available outside production.

## SL -SERIES

### 900 MODEL

SLIMLINE 900mm				
ITEM	DESCRIPTION	SL9WH	SL9BL	SL9SS
1	Power Cord	103821	103821	103821
2	Diffuser	101112	101112	101112
3	Motor 3 sp. UPPCO	103674	103674	103674
4	Fan Blade d shaft	102283	102283	102283
5	E-Clip	999084	999084	999084
6	Lamp Holder	101104	101104	101104
7	Lamp Round 40W	101191	101191	101191
8	Cord Entry Family	102549CL	102549CL	102549CL
9	Filter Spring	101221	101221	101221
10	Filter Aluminium Carcoal filter x 3	100046 103793C	100046 103793C	100046 103793C
11	Installation Instructions	102804	102804	102804
12	Mounting hardware kit	100651	100651	100651
13	Assy. 3 Spd Switch	103417WH	103417BL	103471BL
14	PCB Assy. 3 Spd Switch			
15	3Sp switch Family WH			
16	Rear Cover	101063WH	101063BK	101063BK
17	Corner Moulding L&R	101160WH	101160BL	101160BL
18	Exhaust Cover	101067WH	101067BK	101067SS
19	Front Panel	101093WH	101093BK	101093SS
20	Motor Housing*			
21	Closed End Connector	102321	102321	102321
22	Cable Clamp	102554	102554	102554
23	Motor Bracket	102274	102274	102474
24	Instructions Slimline	101322	101322	101322
25	Washer M5 Ext.lock	999085	999085	999085
	Fingerguard	103943	103943	103943

NOTE; \*some cabinet parts not available outside production.

## **SECTION 1.**

### **MOTOR REMOVAL AND REPLACEMENT**

- 1.1 DISCONNECT THE POWER SUPPLY
- 1.2 REMOVE FILTER, FINGERGUARD AND FANBLADE
- 1.3 REMOVE FILTER SPRINGS AND LOCATION SCREWS ON MOTORHOUSING. UNSCREW AND REMOVE REAR COVER.
- 1.4 LIFT MOTOR HOUSING FRONT EDGE. WITHDRAW, PULLING POWER CORD THROUGH CORD ENTRY.
- 1.5 DISCONNECT SWITCH
- 1.6 REMOVE MOTORHOUSING FROM BODY, REMOVE FAN AND CLIP.
- 1.7 UNDO TWO MOTOR RETAINING NUTS AND REMOVE THE WASHERS.
- 1.8 WITHDRAW MOTOR FROM BRACKET.
- 1.9 CUT THE WIRES FROM THE OLD MOTOR.
- 1.10 CUT THE WIRES ON THE NEW MOTOR APPROXIMATELY 50mm FROM THE MOTOR **NOTE:** RED = 1<sup>ST</sup> SPEED  
BLUE = 2<sup>ND</sup> SPEED  
BLACK = 3<sup>RD</sup> SPEED  
WHITE = NEUTRAL
- 1.11 STRIP AND SOLDER THE WIRES FROM THE NEW MOTOR TO EXISTING MOTOR WIRING SLEEVE EACH WIRE
- 1.12 REASSEMBLE RANGE HOOD IN THE REVERSE OF THE ABOVE PROCEDURE, TAKING CARE TO PULL AS MUCH OF THE POWER CORD OUT OF THE BODY.
- 1.13 TEST TO ELECTRICAL SAFETY STANDARDS

## **SECTION 2.**

### **POWER CORD REPLACEMENT**

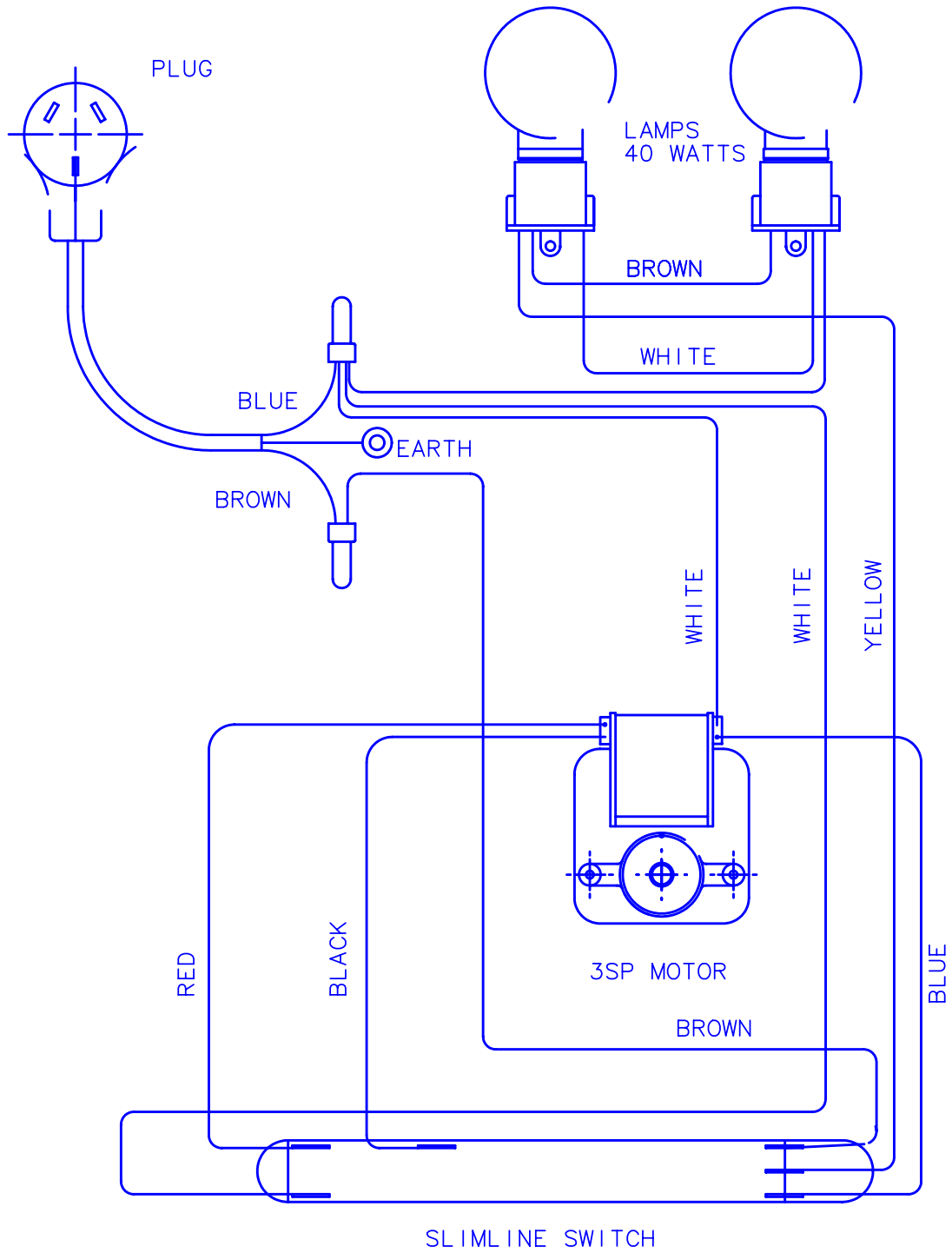
- 2.1 DISCONNECT THE POWER SUPPLY.
- 2.2 REMOVE FILTER.
- 2.3 REMOVE MOTOR HOUSING AS PER INSTRUCTION IN SECTION 1.
- 2.4 REMOVE THE CABLE CLAMP.
- 2.5 REMOVE AND RETAIN EARTH SCREW AND WASHER.
- 2.6 CUT OFF THE CLOSED END CONNECTORS AND DISCARD.
- 2.7 STRIP WIRES READY FOR ASSEMBLY.
- 2.8 FEED NEW POWER CORD TROUGH GROMMET AND CRIMP A NEW CLOSED END CONECTOR TO STRIPPED WIRE.
- 2.9 REFIT CABLE CLAMP, ALSO EARTH SCREW AND WASHER.
- 2.10 REASSEMBLE IN REVERSE ORDER.
- 2.11 TEST TO ELECTRICAL SAFETY STANDARD.

## **SECTION 3.**

### **SWITCH REPLACEMENT**

- 3.1 DISCONNECT POWER SUPPLY
- 3.2 REMOVE FILTER
- 3.3 REMOVE MOTORHOUSING AS PER THE INSTRUCTIONS IN SHEET 1.
- 3.4 3SPD.SWITCH ASSY. IS REMOVED FROM THE INSIDE BY DEPRESSING THE HOLDING LUGS AT THE END OF THE PLASTIC MOULDING (OPPOSITE END TO NEON), AND PASSING THE SWITCH OUT THE FRONT APERTURE.
- 3.5 WHEN REFITTING THE SWITCH ASSEMBLY, FEED THE WIRES THROUGH THE SLOT IN THE FRONT AND CONNECT AS PER WIRING DIAGRAM AND FEED SWITCH WITH WIRES CONNECTED BACK INTO SLOT. PLACE NEON END INTO SLOT FIRST AND CLIP IN OPPOSITE END.
- 3.6 RE ASSEMBLE HOOD IN REVERSE ORDER.
- 3.7 TEST TO ELECTRICAL SAFETY STANDARDS.

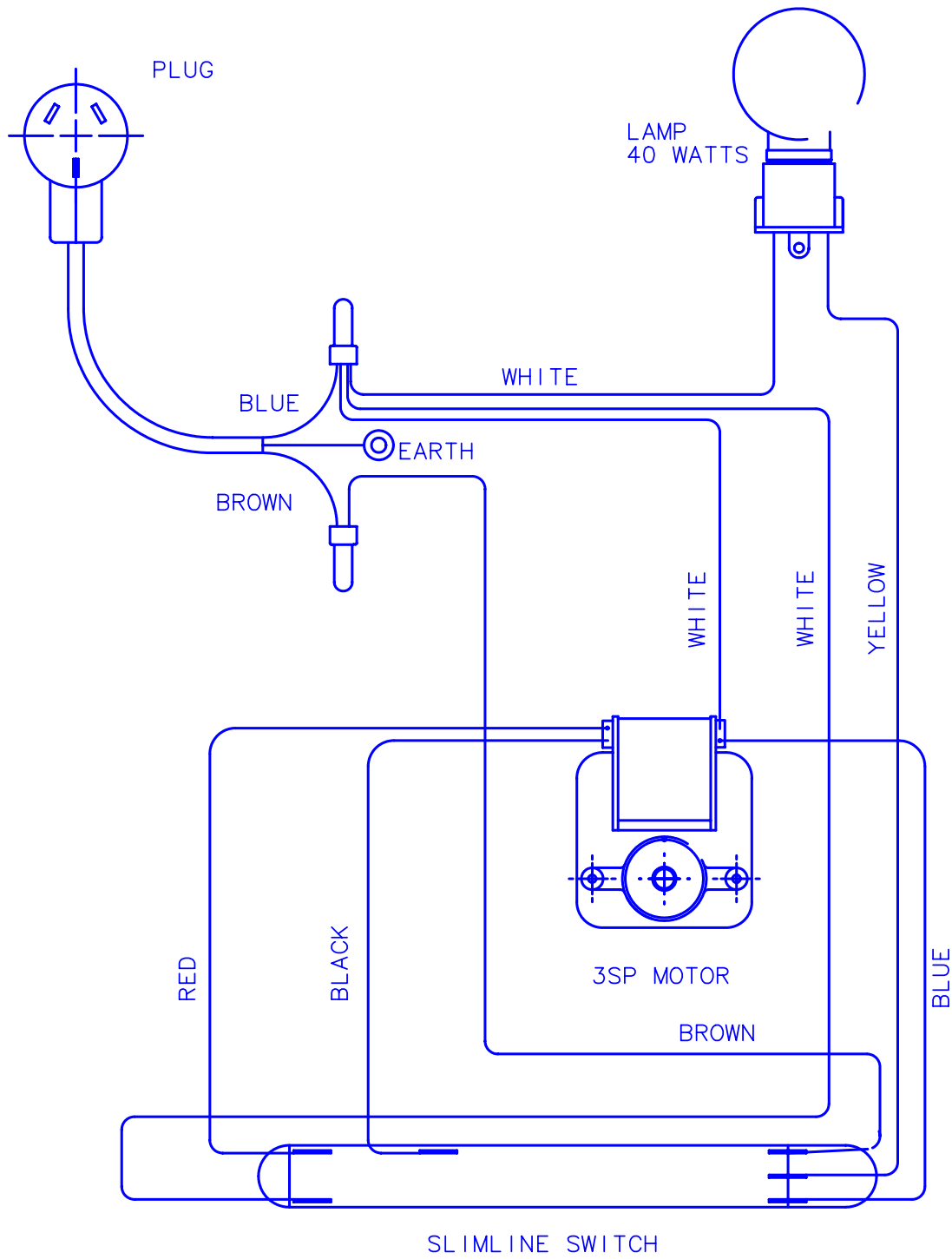
**SL -SERIES**



WIRING DIAGRAM  
3SPEED 2LIGHT 1MOTOR (UPPCO)



**SL -SERIES**



WIRING DIAGRAM

3SPEED 1LIGHT 1MOTOR (UPPCO)