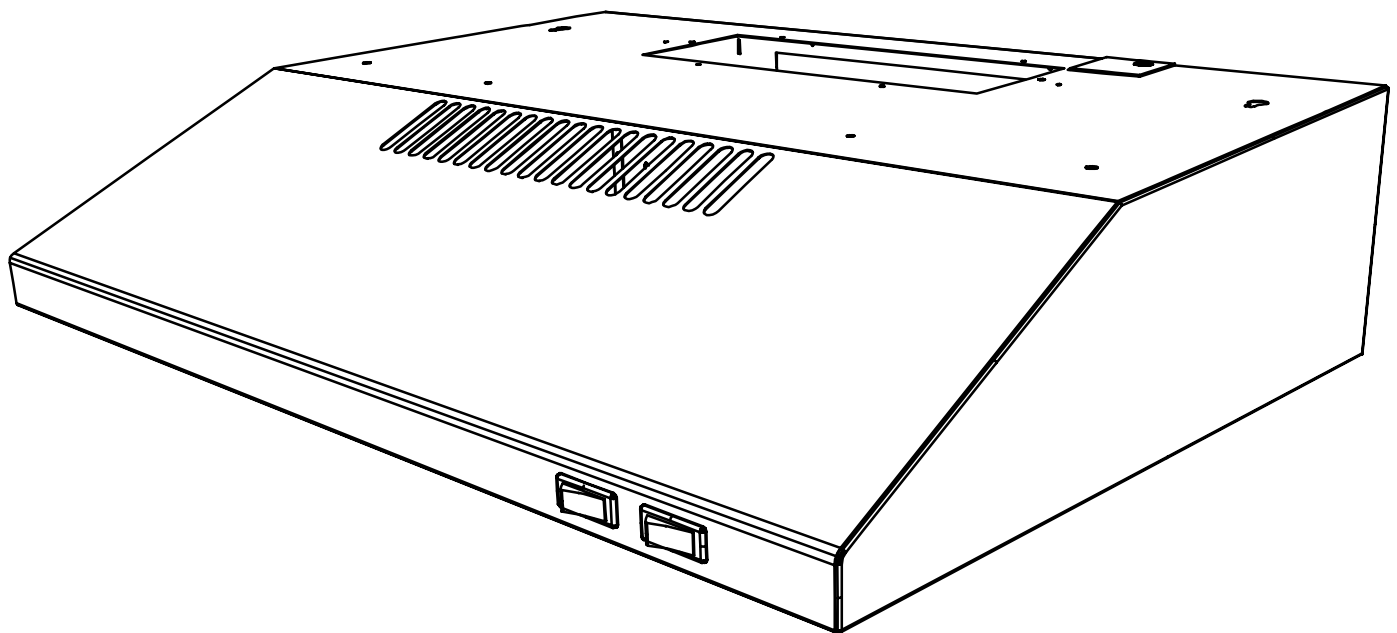


RU- SERIES

 **Robinhood**

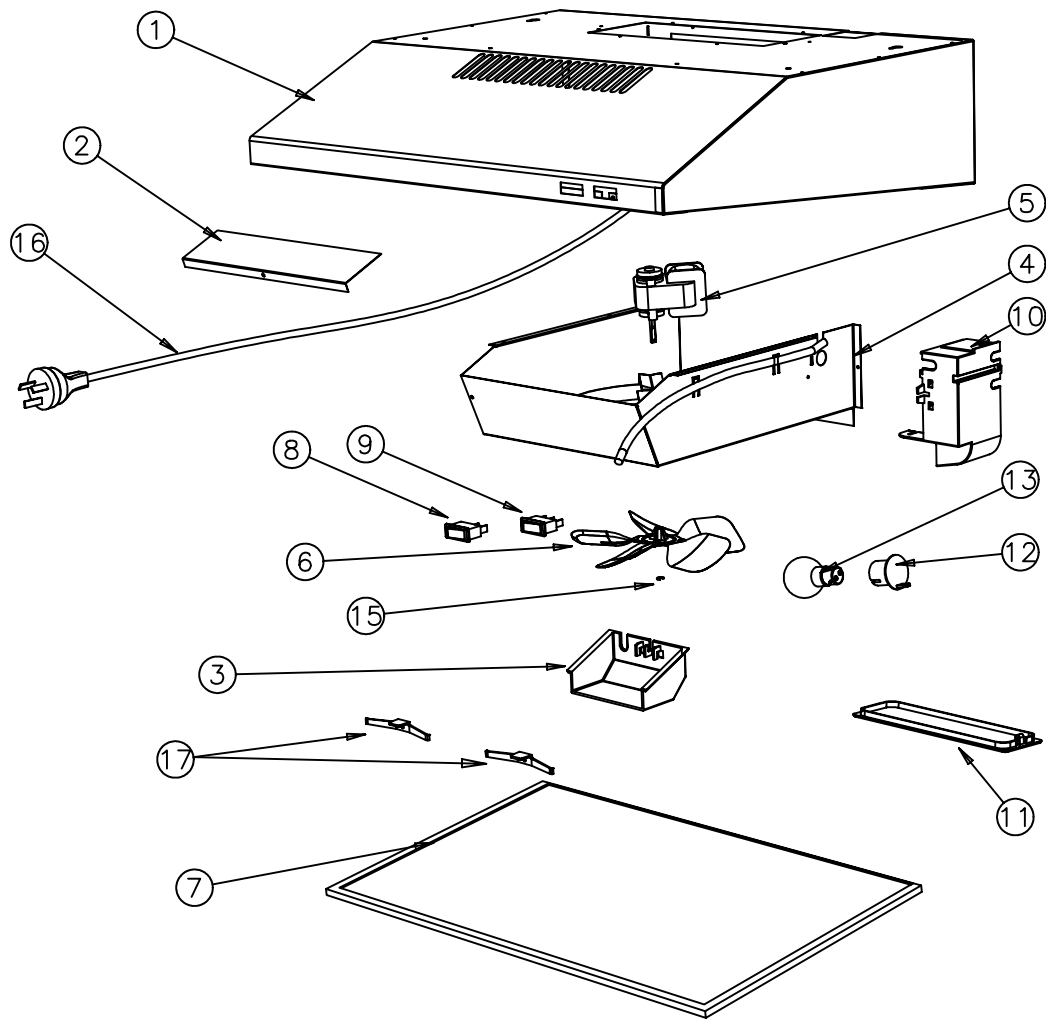


***RANGEHOOD FIXED
TWO SPEED MODEL
RU6WH, RU6BL, RU6SS,
RU9WH, RU9BL, RU9SS***

APPROVED
ISSUE:D
07/14/00

1 OF 7

COMPONENT DRAWING



RU- SERIES

RANGEHOOD RU6 SERIES

ITEM	DESCRIPTION	Part No RU6WH	Part No RU6BL	Part No RU6SS
1	Carcass Rangehood 600	103553WH	103553BL	103557SS
2	Recirculation vent Cover	103542WH	103542BL	103542BL
	Vent cover kit. Used as replacement for models supplied with Exhaust stickers.	103544	103545	103545
3	Plastic Cover Front	103266	103266	103266
4	Fanbox Assembly	103415WH	103415BL	103505
5	Motor-2speed & Nuts/washer	103095	103095	103095
6	Fanblade 'D' Shaft	102283	102283	102283
7	Filter ALU 362 x 576 12 layer	103321	103321	103321
8	Light Switch	100683	101909	101909
9	Fan Switch	100684	101910	101910
10	Plastic Cover Rear	103265	103265	103265
11	Diffuser Max 40 Watt New	103125	103125	103125
12	Lamp Holder	101104	101104	101104
13	Lamp 40 W Round Clear 230V	101191	101191	101191
15	E-Clip	999084	999084	999084
16	Powercord White	101220	101220	101220
17	Filter Spring	101221	101221	101221

RU- SERIES

RANGEHOOD RU9 SERIES

ITEM	DESCRIPTION	Part No	Part No	Part No
		RU9WH	RU9BL	RU9SS
1	Carcass Rangehood 900	103555WH	103555BL	103559SS
2	Recirculation Vent Cover	103542WH	103542BL	103542BL
	Vent cover kit. Used as replacement for models supplied with Exhaust stickers.	103544	103545	103545
3	Plastic Cover Front	103266	103266	103266
4	Fanbox Assembly	103415WH	103415BL	103505
5	Motor-2 speed & Nuts/Washer	103095	103095	103095
6	Fanblade 'D' Shaft	102283	102283	102283
7	Filter - ALU 900 12 layer	103322	103322	103322
8	Light Switch	100683	101909	101909
9	Fan Switch	100684	101910	101910
10	Plastic Cover Rear	103265	103265	103265
11	Diffuser Max 40 Watt New	103125	103125	103125
12	Lamp Holder	101104	101104	101104
13	Lamp 40 W Round Clear 230V	101191	101191	101191
15	E-Clip	999084	999084	999084
16	Powercord White	101220	101220	101220
17	Filter Spring	101221	101221	101221

SECTION 1.

MOTOR REMOVAL AND REPLACEMENT

- 1.1 DISCONNECT THE POWER SUPPLY
- 1.2 REMOVE FILTER
- 1.3 REMOVE FAN BLADE
- 1.4 UNDO TWO MOTOR RETAINING NUTS AND REMOVE THE WASHERS.
- 1.5 PUSH MOTOR VERTICALLY UP AND ROLL OUT OVER MOTOR MOUNTING BRACKET
- 1.6 CUT THE WIRES FROM THE OLD MOTOR.
- 1.7 CUT THE WIRES ON THE NEW MOTOR APPROXIMATELY 50mm FROM THE MOTOR **NOTE:** BLACK = HIGH SPEED
RED = LOW SPEED
WHITE = NEUTRAL
BLUE = 2ND LOW SPEED (3 SPEED MODELS)
- 1.8 STRIP AND SOLDER THE WIRES FROM THE NEW MOTOR TO THE RANGE HOOD WIRING AND SLEEVE EACH WIRE
- 1.9 REASSEMBLE RANGE HOOD IN THE REVERSE OF THE ABOVE PROCEDURE
- 1.10 TEST TO ELECTRICAL SAFETY STANDARDS

SECTION 2.

SWITCH REPLACEMENT

- 2.1 DISCONNECT THE POWER SUPPLY
- 2.2 REMOVE FILTER
- 2.3 REMOVE THE ONE RETAINING SCREW FROM THE FRONT SWITCH COVER, SLIDE SIDE-WAYS TO CUTOUT AND EXTRACT.

RU- SERIES

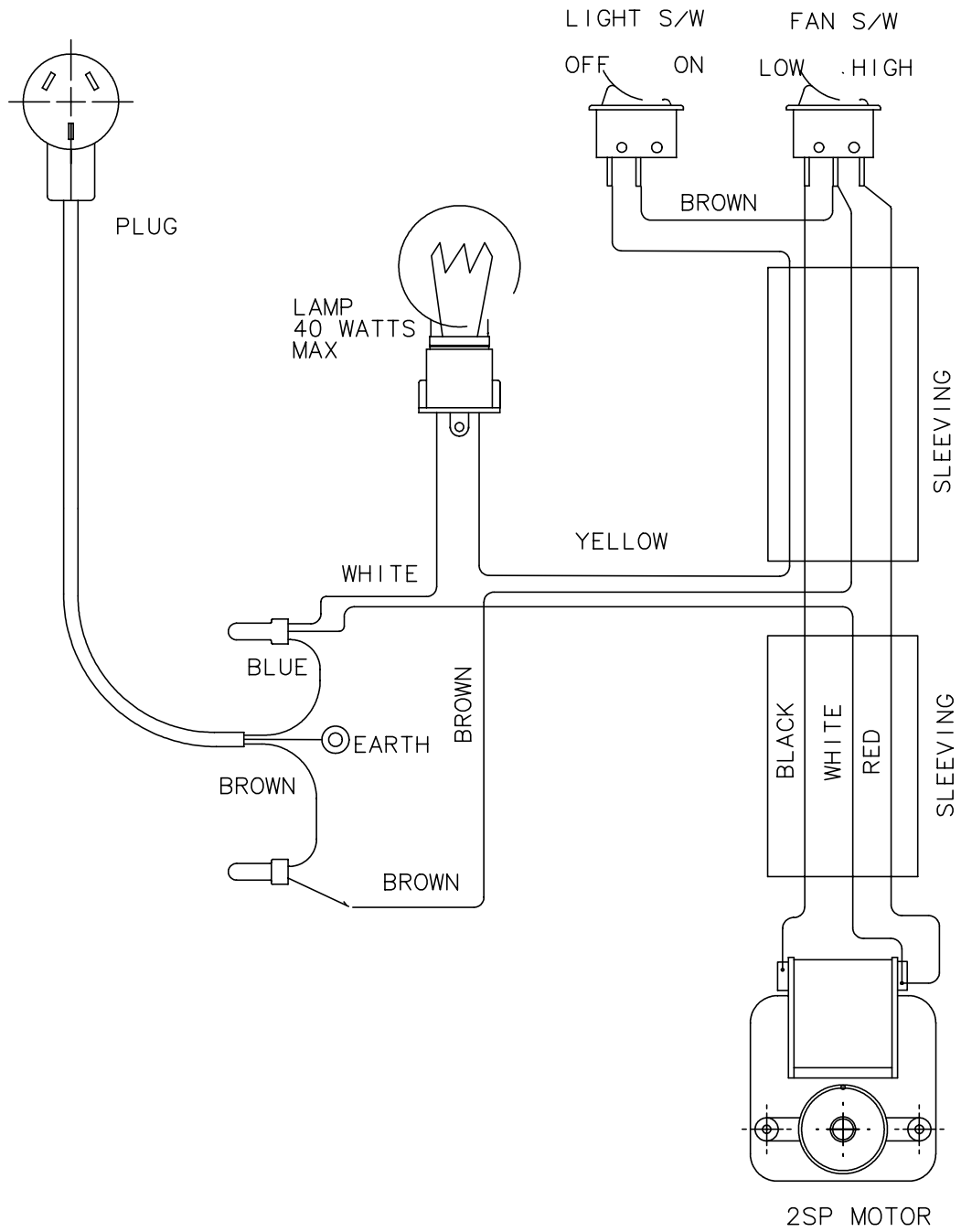
- 2.4 SWITCHES ARE REMOVED FROM INSIDE OF THE RANGEHOOD BY DEPRESSING THE RETAINING TAGS MOULDED ON EACH SIDE OF THE SWITCH.
- 2.5 REPLACE WITH NEW SWITCH, CHECK WIRING WITH DIAGRAM AND MAKE SURE SWITCHES ARE CORRECTLY POSITIONED.
- 2.6 TEST

SECTION 3.

POWER CORD REPLACEMENT

- 3.1 DISCONNECT POWER SUPPLY
- 3.2 REMOVE FILTER
- 3.3 REMOVE DIFFUSER AND LIGHT BULB
- 3.4 UNSCREW THE RETAINING SCREW OF THE REAR ELECTRIC COVER, DRAW DOWN TO RELEASE TABS AND ROLL AWAY TO EXPOSE WIRES.
- 3.5 REMOVE EARTH SCREW, CUT THE CLOSED END CONNECTORS FROM THE END OF THE WIRES OF THE POWER CABLE, RELEASE POWER CORD FROM RETAINER AND EXTRACT.
- 3.6 SLIDE NEW POWER CORD BACK THROUGH THE HOLE IN THE TOP OF THE ELECTRIC COVER, STRIP AND RECONNECT THE NEW CORD USING NEW CONNECTORS AS PER WIRING DIAGRAM **CRIMP SECURELY**, FASTEN EARTH SCREW.
- 3.7 LOCK NEW CORD BACK INTO THE RETAINER MOLDED INTO THE COVER, TIDY WIRES INTO THE COVER AND SLIDE INTO PLACE.
- 3.8 SECURE THE ELECTRIC COVER AGAIN WITH ITS FIXING SCREW.
- 3.9 REINSTALL THE LIGHT BULB AND CLIP DEFUSER BACK IN PLACE
- 3.10 REFIT FILTER.
- 3.11 CARRY OUT AN EARTH TEST BEFORE CONNECTING TO POWER SUPPLY

RU- SERIES



WIRING DIA
1LT 1MTR 2SP