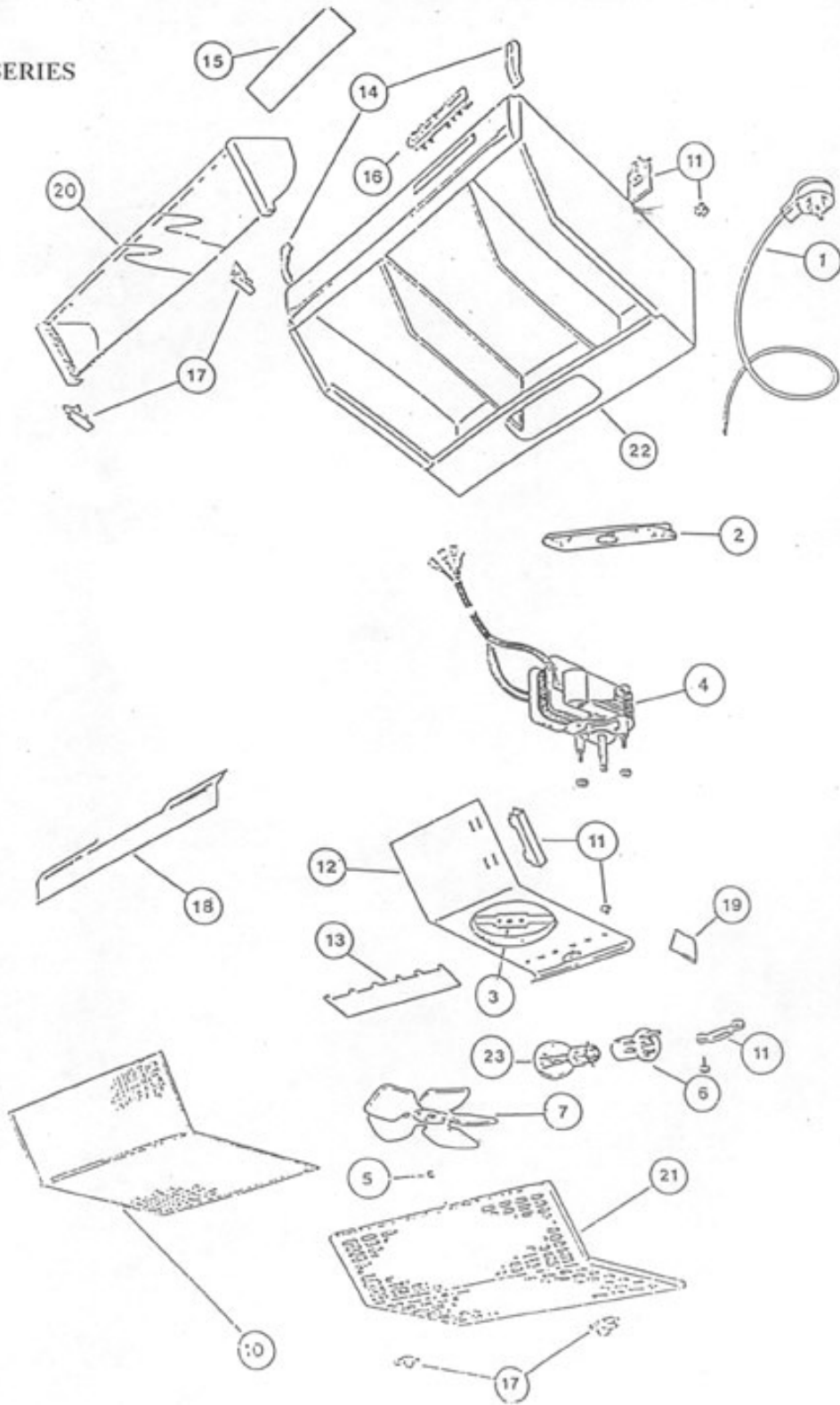


CU - SERIES

CU-SERIES

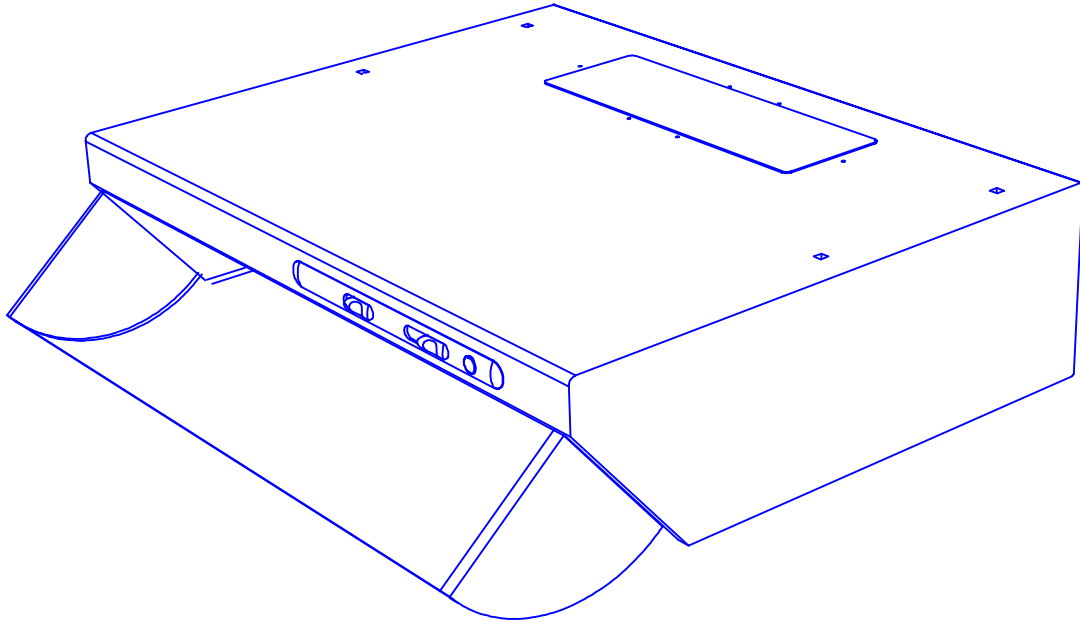


APPROVED
ISSUE: A
11.01.98
Ant.

APPROVED
ISSUE: A
08/04/00

CU-SERIES

 Robinhood



RANGE HOOD
MODEL
CU6WH3, CU9WH3

APPROVED
ISSUE: A
07/14/00

1 OF 6

CU-SERIES

ITEM	DESCRIPTION	CU6WH3	CU9WH3
1	Power Cord	101220	101220
2	Diffuser	101112	101112
3	Motor Bracket	102274	102274
4	Motor 3 sp. UPPCO	103096	103096
5	E-Clip	999084	999084
6	Lamp Holder	101104	101104
7	Fan Blade d shaft	102283	102283
10	Filter alu.	101507	101508
11	Cord Entry Family	102549CL	102549CL
12	Motor Housing	101473WH	101473WH
13	Rear Cover	101471WH	101471WH
14	Corner Moulding L&R	101551WH	101551WH
15	Exhaust Cover (film)	101533	101533
16	3Sp switch Assy	103417WH	103417WH
17	Latch&Stay Family	103120WH	103120WH
18	Service Panel	101474WH	101511WH
19	Safety Cover	101506	101506
20	Visor Assembly	103157WH	103158WH
21	Filter Tray	101472WH	101532WH
22	Carcass	102347WH	102360WH
23	Lamp Round 40W	101191	101191

CU-SERIES

SECTION 1.

MOTOR REMOVAL AND REPLACEMENT

- 1.1 DISCONNECT THE POWER SUPPLY
- 1.2 REMOVE FILTER TRAY, DIFFUSER AND LIGHT BULB.
- 1.3 REMOVE SAFETY COVER (PLASTIC PART RIGHT HAND SIDE).
- 1.4 REMOVE REAR COVER.
- 1.5 REMOVE SERVICE COVER(AT THE FRONT OF THE HOOD).
- 1.6 REMOVE FIXING SCREWS ON MOTOR HOUSING.
- 1.7 REMOVE MOTOR HOUSING FROM BODY.
- 1.8 UNDO TWO MOTOR RETAINING NUTS AND REMOVE THE WASHERS.
- 1.9 DRAW MOTOR DOWN, AWAY FROM MOUNTING BRACKET TO SHOW MOTOR TAPPINGS.
- 1.10 CUT THE WIRES FROM THE OLD MOTOR.
- 1.11 CUT THE WIRES ON THE NEW MOTOR APPROXIMATELY 50mm FROM THE MOTOR **NOTE:** BLUE = 1ST LOW SPEED
RED = 2ND SPEED
BLACK = 3RD SPEED
WHITE = NEUTRAL
- 1.12 STRIP AND SOLDER THE WIRES FROM THE NEW MOTOR TO THE RANGE HOOD AND SLEEVE EACH WIRE
- 1.13 REASSEMBLE RANGE HOOD IN THE REVERSE OF THE ABOVE PROCEDURE ABOVE
- 1.14 TEST TO ELECTRICAL SAFETY STANDARDS

CU-SERIES

SECTION 2.

SWITCH REPLACEMENT

- 2.1 DISCONNECT POWER SUPPLY
- 2.2 REMOVE FILTER TRAY.
- 2.3 REMOVE SERVICE COVER AS PER THE INSTRUCTIONS IN SHEET 1.
- 2.4 3SPD.SWITCH ASSY. IS REMOVED FROM THE INSIDE BY DEPRESSING THE HOLDING LUGS AT THE END OF THE PLASTIC MOULDING (OPPOSITE END TO NEON), AND PASSING THE SWITCH OUT THE FRONT APPERTURE.
- 2.5 WHEN REFITTING THE SWITCH ASSEMBLY, FEED THE WIRES THROUGH THE SLOT IN THE FRONT AND CONNECT AS PER WIRING DIAGRAM AND FEED SWITCH WITH WIRES CONNECTED BACK INTO SLOT. PLACE NEON END INTO SLOT FIRST AND CLIP IN OPPOSITE END.
- 2.6 REASSEMBLIE HOOD IN REVERSE ORDER.
- 2.7 TEST TO ELECTRICAL SAFETY STANDARDS.

SECTION 3.

POWER CORD REPLACEMENT

- 3.1 DISCONNECT THE POWER SUPPLY.
- 3.2 REMOVE FILTER TRAY.
- 3.3 REMOVE MOTOR HOUSING AS PER INSTRUCTION IN SECTION 1.
- 3.4 REMOVE THE CABLE CLAMP.
- 3.5 REMOVE AND RETAIN EARTH SCREW AND WASHER.

CU-SERIES

- 3.6 CUT OFF THE CLOSED END CONNECTORS AND DISCARD.
- 3.7 STRIP WIRES READY FOR ASSEMBLY.
 - 3.7.1 FEED NEW POWER CORD THROUGH THE CORD ENTRY AT REAR, THEN THROUGH GROMMET AND CRIMP A NEW CLOSED END CONECTOR TO STRIPPED WIRE.
- 3.8 REFIT CABLE CLAMP, ALSO EARTH SCREW AND WASHER.
- 3.9 REASSEMBLE IN REVERSE ORDER.
- 3.10 TEST TO ELECTRICAL SAFETY STANDARD.

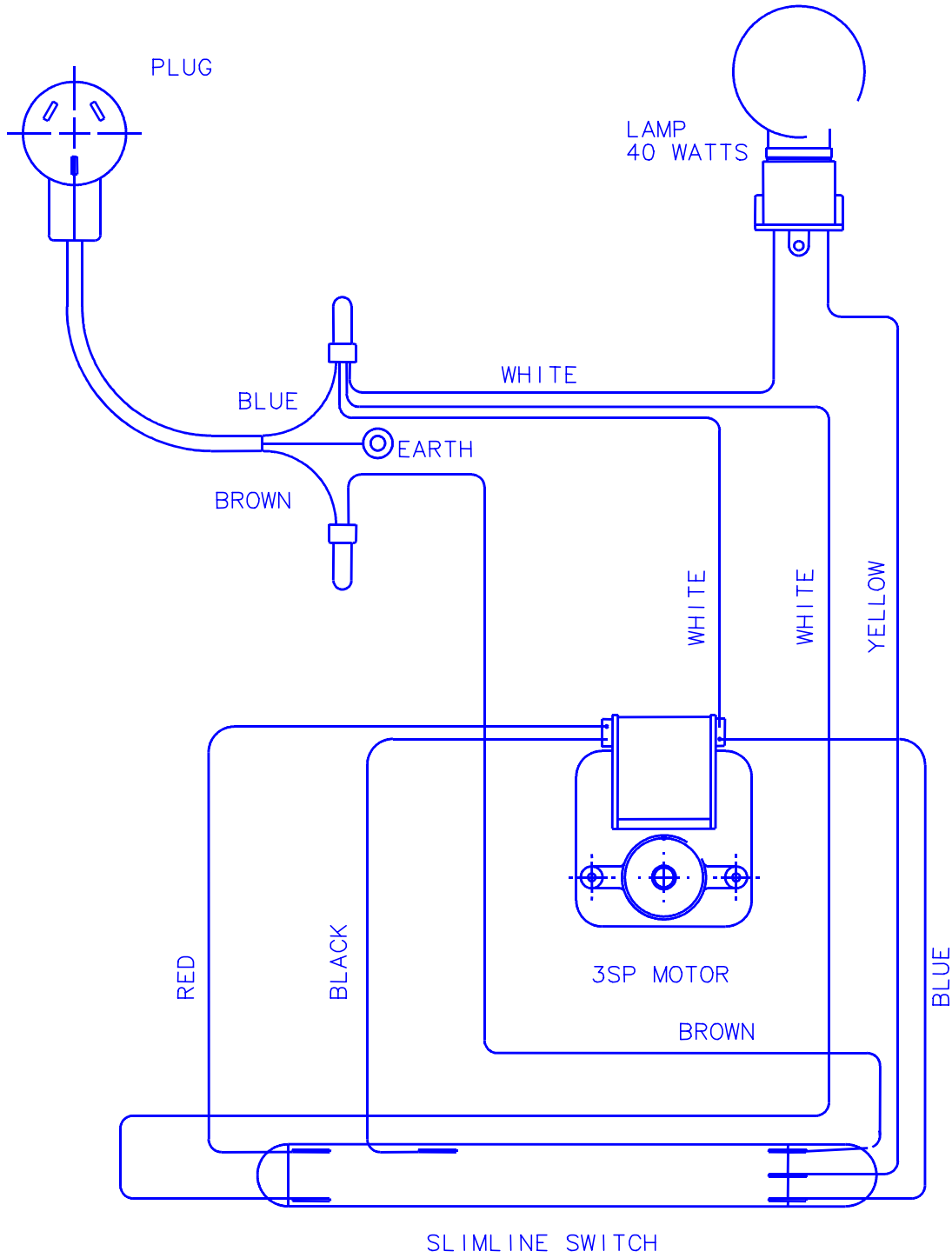
SECTION 4.

VISOR REPLACEMENT

- 4.1 REMOVE QUADRANT STAYS BY CAREFULLY DEPRESSING TAGS WITH A FINE SCREW DRIVER.
- 4.2 DISCONNECT VISOR BY PULLING DOWN PARALLEL TO ANGLE OF THE RANGEHOOD.
- 4.3 ROTATE VISOR TO REMOVE FROM UNIT.

TO REPLACE VISOR, WORK IN REVERSE OF PROCEDURE OUTLINED ABOVE.

CU-SERIES



WIRING DIAGRAM

3SPEED 1LIGHT 1MOTOR (UPPCO)