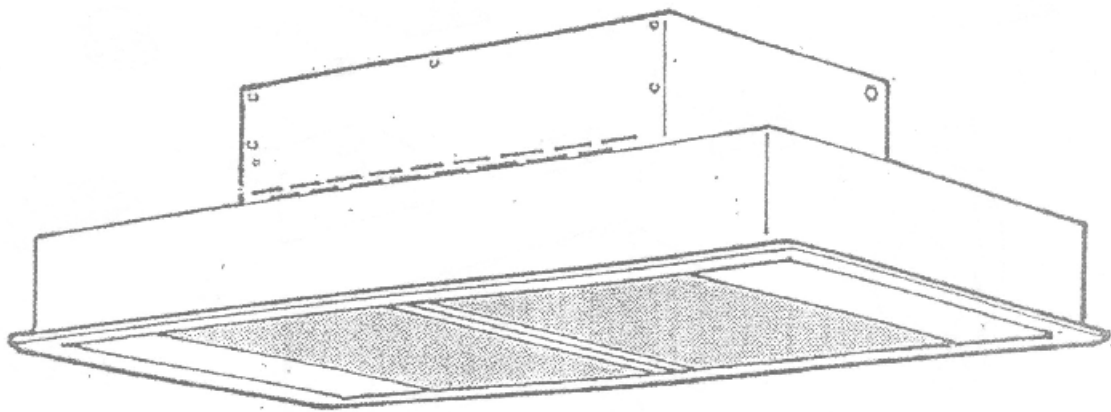


6F -SERIES

 **Robinhood**

POWERPACK RANGE HOOD

MODEL
6F6WH, 6F8WH

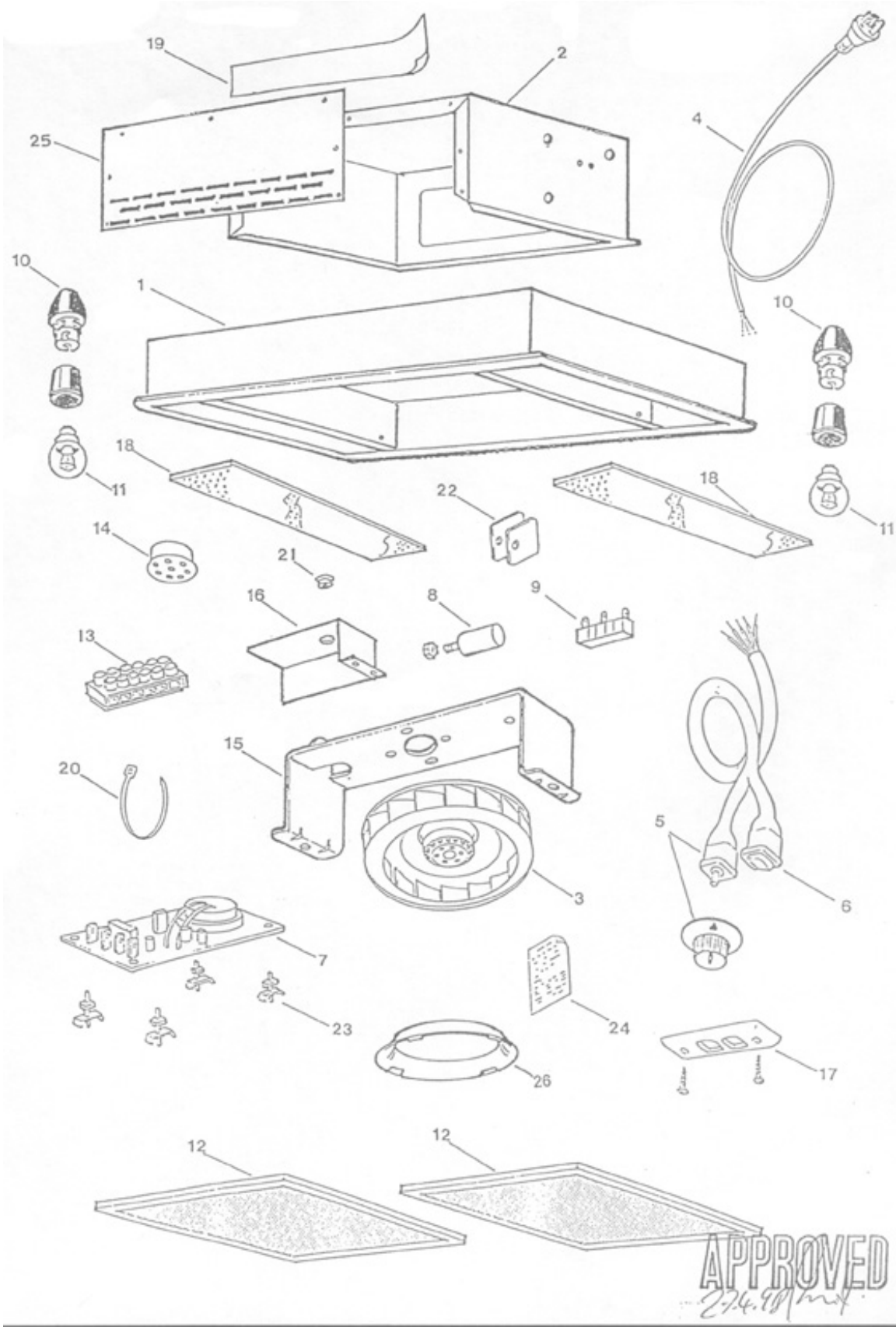


SERVICE MANUAL

APPROVED
ISSUE: C
ECN2802

Page 1 of 7

6F -SERIES



6F -SERIES**POWERPACK**

ITEM	DESCRIPTION	6F6WH PART No.	6F8WH PART No.
1*	Filter Fan Unit		
2*	Fan Box		
3	Motor E.B.M.R2E220	102767	
4	Power Cord	103821	
5	Rotary Switch Assy.	102908	
6	Switch 770 MEC	102909	
7	PCB Heat Alarm	102746	
8	Capacitor	102793	
9	Resistor PW50	102690	
10	Lamp Holder Assy.	102795	
11	Lamp 40W	101191	
12	Filter	102910	102385
13	Terminal Block	101841	
14	Vent Plug	101716	
15	Motor Bracket	102438	
16	PCB Cover	102664	
17	2 Gang Arch PLT	102907	
18	Glass	102917	102918
19	Exhaust Cover	102790	
20	Wire Tie	106099	
21	Grommet	102384	
22	Glass Ret. Bracket	103042	
23	PCB Spacer	102747	
24	Installation Instructions	102911	
25	Fan Box Front Cover	102637WH	
26	Bell Mouth E220	103194	

*NOT AVAILABLE OUTSIDE PRODUCTION

POWERPACK

TO REPLACE MOTOR

- 1 DISCONNECT UNIT FROM POWER SUPPLY
- 2 REMOVE UNIT TO SUITABLE WORK AREA
- 3 REMOVE FILTERS
- 4 REMOVE GLASS DISFFUSERS BY UNDOING SCREWS AND REMOVING RETAINERS, THEN SLIDE DIFFUSERS IN TOWARD CENTRE OF UNIT TO CLEAR
- 5 REMOVE LAMPS
- 6 UNSCREW AND REMOVE LAMP HOLDER ASSEMBLYS
- 7 REMOVE 7 SMALL SCREWS TO RELEASE FAN BOX AND LIFT IT SUFFICIENT TO CLEAR MOTOR MOUNTING BRACKET
- 8 UNDO TWO NYLOC NUTS TO LIFT MOTOR BRACKET CLEAR OF BODY
- 9 TAKE NOTE OF MOTOR WIRE COLOURS IN TERMINAL BLOCK BEFORE REMOVING MOTOR WIRES
- 10 UNDO FOUR SCREWS TO REMOVE MOTOR FROM MOTOR BRACKET
- 11 MOUNT NEW MOTOR AND REASSEMBLE UNIT IN REVERSE OF ABOVE PROCEDURE
- 12 TEST TO APPROPRIATE ELECTRICAL STANDARDS BEFORE USE

6F -SERIES

TO REPLACE POWER CORD

- 1 DISCONNECT FROM POWER SUPPLY
- 2 REMOVE UNIT TO SUITABLE WORK AREA
- 3 REMOVE FILTERS
- 4 REMOVE GLASS DISFFUSERS BY UNDOING SCREWS AND REMOVING RETAINERS, THEN SLIDE DIFFUSERS IN TOWARD CENTRE OF UNIT TO CLEAR
- 5 REMOVE LAMPS
- 6 UNSCREW AND REMOVE LAMP HOLDERS
- 7 REMOVE 7 SMALL SCREWS TO RELEASE FAN BOX AND LIFT IT CLEAR OF BODY
- 8 DISCONNECT POWER CORD WIRES (TAKE NOTE OF COLOUR POSITIONS) FROM TERMINAL BLOCK, DISPOSE OF OLD POWER CORD
- 9 ASSEMBLE NEW POWER CORD AND REASSEMBLE UNIT IN REVERSE OF ABOVE PROCEDURE
- 10 TEST TO APPROPRIATE ELECTRICAL STANDARD BEFORE USE

TO CHANGE LAMP

- 1 DISCONNECT FROM POWER SUPPLY
- 2 REMOVE FILTER
- 3 REMOVE GLASS DISFUSSER BY UNDOING AND REMOVING RETAINER. SLIDE DIFFUSER IN TOWARD CENTRE OF UNIT TO CLEAR
- 4 CHANGE LAMP (NOTE 40W MAX)
- 5 REPLACE DIFFUSER AND FILTER IN REVERSE OF ABOVE PROCEDURE

