

Robinhood

RECOMMENDS UNIDUCT
DUCTING SYSTEMS FOR
RANGEHOODS

UNIDUCT[®]
RANGEHOOD DUCTING

**WE REPEAT
THE ROBINHOOD
RANGEHOOD WITH
HEAT ALARM
IS NOT
A GENERAL HOUSEHOLD
FIRE ALARM SYSTEM
AND NO WARRANTY
TO THAT EFFECT
IS GIVEN BY
ROBINSON INDUSTRIES
LTD.!!**

WARNING

- This appliance is not intended for use by young children or infirm persons without supervision.
- Young children should be supervised to ensure that they do not play with the appliance.
- There shall be adequate ventilation of the room when the rangehood is used at the same time as appliances burning gas or other fuels.
- You must read the details concerning the method and frequency of cleaning.
- There is a fire risk if cleaning is not carried out in accordance with the instructions.
- Do not flambé under the rangehood.
- Exhaust air must not be discharged into a flue which is used for exhausting fumes from appliances burning gas or other fuels.
- The minimum distance between the hob surface and the lowest part of the rangehood. This distance shall be at least 650mm if the rangehood is installed over a gas hob.
- That regulations concerning the discharge of exhaust air have to be fulfilled.
- If the supply cord of this equipment is damaged, it must only be replaced by the manufacturer or its service agent or similarly qualified person in order to avoid a hazard.

Robinhood

MANUFACTURED IN NEW ZEALAND
BY:

ROBINSON INDUSTRIES LIMITED
P.O. BOX 51 201, PAKURANGA
AUCKLAND, NEW ZEALAND
TEL: +64 9 272 5129
FAX: +64 9 272 5148

Robinhood

RANGEHOOD POWERPACK

OPERATING INSTRUCTIONS & MAINTENANCE

FILTER MAINTENANCE

To maintain efficiency the rangehood's filters should be removed regularly (approximately monthly) and washed using soap or mild liquid detergents.

Do not use harsh detergents or dishwasher powders. Badly contaminated filters should be replaced

GENERAL MAINTENANCE

The rangehood should be cleaned regularly using warm water with soap or mild liquid detergents, so that no buildup of grease occurs as these deposits are corrosive. Clean frequently all deposits from the rangehood and other contaminated surfaces.

Do not use abrasives or harsh detergents/cleaning fluids - e.g. do not use Methylated Spirits.

To replace the globe, simply remove the filter and glass retaining bracket then slide out the glass. Use a simple 40 watt globe.

NOTE: If the supply cord of this equipment is damaged, it must only be replaced by the manufacturer or its service agent or similarly qualified person in order to avoid a hazard.

Lining of the cupboard or canopy interior less than 750mm above a gas cooker should consist of 6mm millboard with a minimum of 0.4mm metal covering. (Refer Gas & Fuel Corporation Regulations. NSC 7310).

WARNING: Exhaust air must not be discharged into a heating flue.

INSTALLATION INSTRUCTIONS

Step 1. For best results the unit should be approximately 600 - 800mm above Cooker and min 650 - 800mm above Gas Cooker.

Step 2. Remove filter and glass. Drill and screw through 4 side holes.

Step 3. Cut square hole 25 x 50mm for Remote - Control Switches

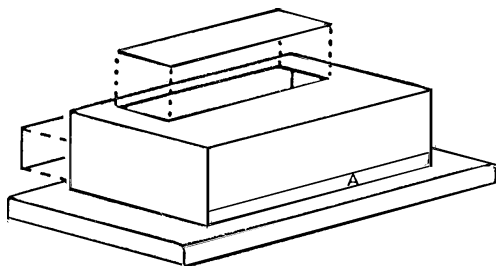
Step 4. Connect switches to face plate and use screw kit set for mounting. Assemble rotary knob on switch.

Step 5. Replace glass and filter.

Step 6. Uniduct ducting systems are available from your Robinhood Retailer.

NOTE:

For Top or Rear Duct, please do remove the appropriate "Duct Knock-Out"

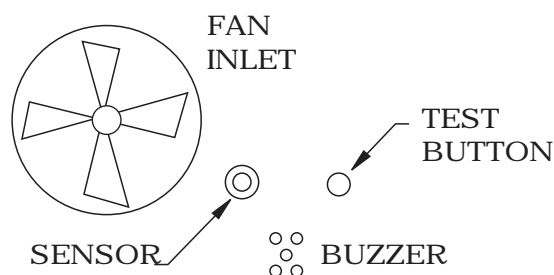


ROBINHOOD RANGEHOOD OPERATING INSTRUCTIONS FOR 'HEAT ALARM'

IMPORTANT: PLEASE READ CAREFULLY AND DO NOT DISCARD

Your new ROBINHOOD rangehood incorporates an early warning HEAT ALARM. This feature is designed to detect dangerous or unnatural temperature rises under the rangehood and emits a loud 105dbA warning signal .

1. The HEAT ALARM is armed automatically whenever the fan is switched ON.
2. In the armed mode, when the heat sensor detects an abnormal high level (such as grease fire) in the cooking area, the alarm will sound and the fan will turn OFF automatically.
3. The alarm signal can be stopped by re-setting the fan switch to the OFF position, or if in are tractable rangehood, by closing the slide-out.
4. A TEST BUTTON for the HEAT ALARM is fitted to the rangehood located next to the fan inlet.



To test the function, remove the filters from rangehood, turn fan ON (any speed setting) and push the TEST BUTTON, the alarm will sound and the fan will stop to indicate the HEAT ALARM is functioning properly.

The alarm function should be checked periodically (once every month) to ensure it is in good working order.

WARNING FOR YOUR PROTECTION

THE HEAT ALARM FUNCTION IN YOUR RANGEHOOD IS NOT A GENERAL HOUSEHOLD FIRE ALARM SYSTEM AND NO EXPRESS OR IMPLIED WARRANTY TO THIS EFFECT IS TO APPLY TO THIS APPLIANCE

Robinson Industries points out that the HEAT ALARM feature of the rangehood is designed to minimise the possible risk of injury and damage to the user, the kitchen and the occupants of the kitchen by alerting all persons to potentially dangerous situations.

Robinson Industries shall not be liable for injury or damage arising from the misuse and/or neglect of the ROBINHOOD RANGEHOOD, from the misuses or neglect of the adjoining cooking appliances, from failure to clean the ROBINHOOD RANGEHOOD or from injury and/or damage arising from failure to regularly service or properly install the ROBINHOOD RANGEHOOD in accordance with the Installation Instructions.

Robinson Industries advises the following procedures should be observed:

1. Ensure the rangehood is installed by a qualified electrician and in accordance with the Installation Instruction and local building codes.
2. Filters must be kept clean to ensure heat detection is achieved as early as possible. Refer to the MAINTENANCE GUIDE.
3. It is the user's responsibility to test the HEAT ALARM periodically, ie. minimum once every month.
4. Robinson Industries strongly recommends users keep a domestic fire extinguisher (of types suitable for fat and electrical fire) near the cooking appliance at all time.