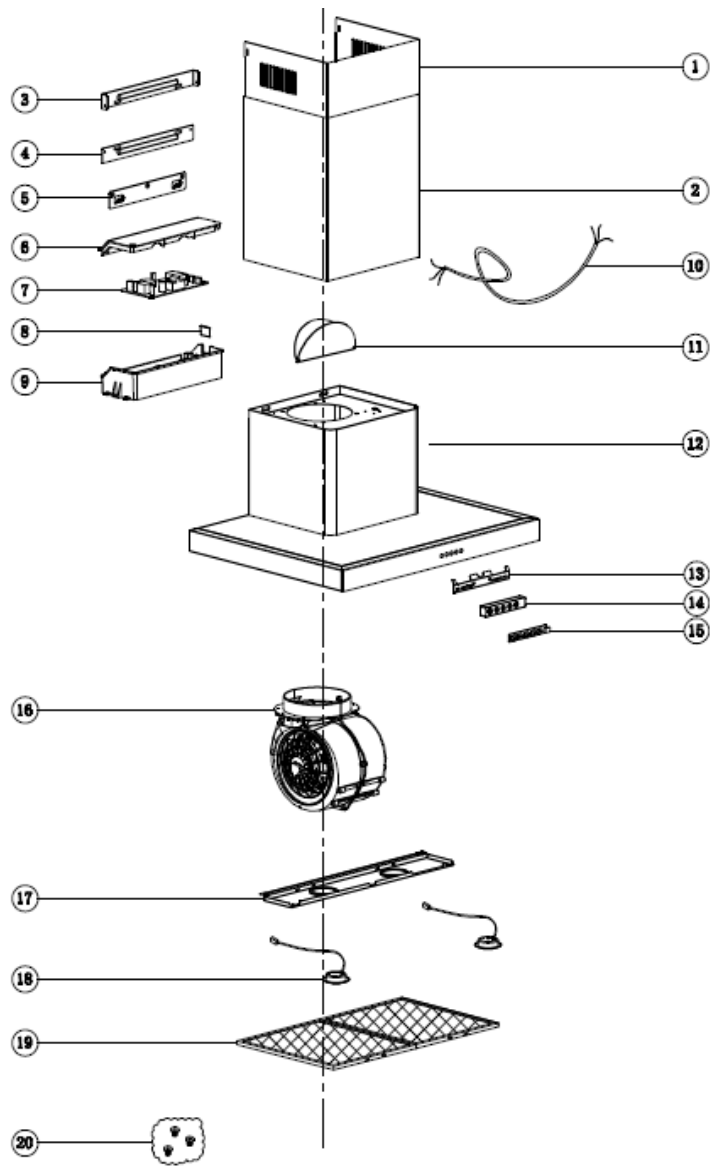


# RWE3CL6SSDC



| SEQ | PART NO.       | QTY<br>(in Product) | DESCRIPTION             |
|-----|----------------|---------------------|-------------------------|
| 1   | 1130203516     | 1                   | INSIDE CHIMNEY          |
| 2   | 1130202585     | 1                   | OUTSIDE CHIMNEY         |
| 3   | 1140300094     | 1                   | INSIDE CHIMNEY BRACKET  |
| 4   | 1140300093     | 1                   | OUTSIDE CHIMNEY BRACKET |
| 5   | 1140300124     | 1                   | HOOK                    |
| 6   | 12001010200228 | 1                   | JUNCTION BOX COVER      |
| 7   | 1400500736     | 1                   | PCB BOARD               |
| 8   | 12001010200261 | 1                   | JUNCTION BOX SEAL COVER |
| 9   | 12001010200229 | 1                   | JUNCTION BOX            |
| 10  | 1400400429     | 1                   | POWER CORD              |
| 11  | 12001010300207 | 2                   | V-FLAP                  |
| 12  | ATCARWE6SS     | 1                   | CAVITY ASSEMBLY(SET)    |
| 13  | 1130402702     | 1                   | SWITCH BRACKET          |
| 14  | 120010300121   | 1                   | SWITCH BOX              |
| 15  | 1400500720     | 1                   | SWITCH PLATE            |
| 16  | 1309800325     | 1                   | MOTOR ASSEMBLY(SET)     |
| 17  | 1130202600     | 1                   | LAMP PLATE              |
| 18  | 1400600304     | 2                   | LED LIGHT               |
| 19  | 1300100235     | 2                   | ALUMINIUM FILTER        |
| 20  | ATSC53B201     | 1                   | SCREW BAG               |