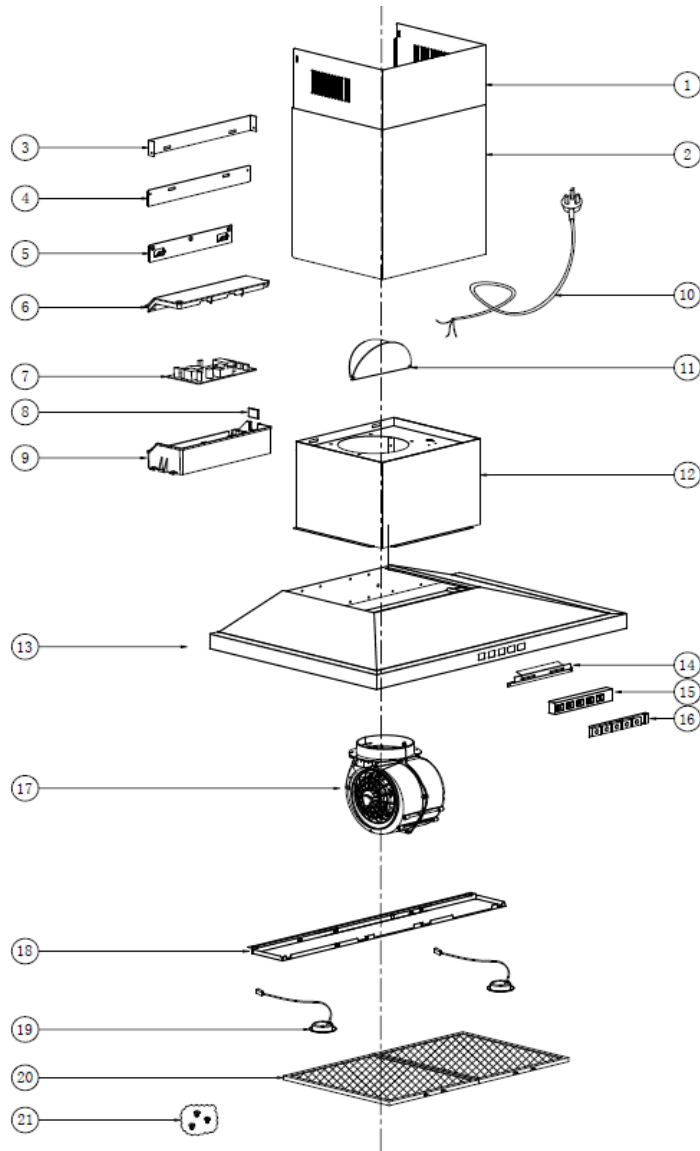


# RWD3CL75DXDC



| SEQ | PART NO.     | QTY (in Product) | DESCRIPTION             |
|-----|--------------|------------------|-------------------------|
| 1   | 301011800928 | 1                | INSIDE CHIMNEY          |
| 2   | 301011800927 | 1                | OUTSIDE CHIMNEY         |
| 3   | 301021600041 | 1                | INSIDE CHIMNEY BRACKET  |
| 4   | 301021600042 | 1                | OUTSIDE CHIMNEY BRACKET |
| 5   | 301021500005 | 1                | HOOK                    |
| 6   | 301030200043 | 1                | JUNCTION BOX COVER      |
| 7   | 290010100101 | 1                | PCB BOARD               |
| 8   | 301030200051 | 1                | JUNCTION BOX SEAL COVER |
| 9   | 301030200044 | 1                | JUNCTION BOX            |
| 10  | 301040700009 | 1                | POWER CORD              |
| 11  | 301031000010 | 2                | V-FLAP                  |
| 12  | 201010500120 | 1                | CAVITY ASSEMBLY(SET)    |
| 13  | ATCARWD75    | 1                | CASING ASSEMBLY(SET)    |
| 14  | 301011500463 | 1                | SWITCH BRACKET          |
| 15  | 301030100124 | 1                | SWITCH BOX              |
| 16  | 290010200116 | 1                | SWITCH PLATE            |
| 17  | 301040600443 | 1                | MOTOR ASSEMBLY(SET)     |
| 18  | 301010400442 | 1                | LAMP PLATE              |
| 19  | 301040200156 | 2                | LED LIGHT               |
| 20  | 301060200069 | 2                | ALUMINUM FILTER         |
| 21  | AT3503B9SW75 | 1                | SCREW BAG               |