

Description: **ROBINHOOD VENTED DRYER 4.5KG WHITE**

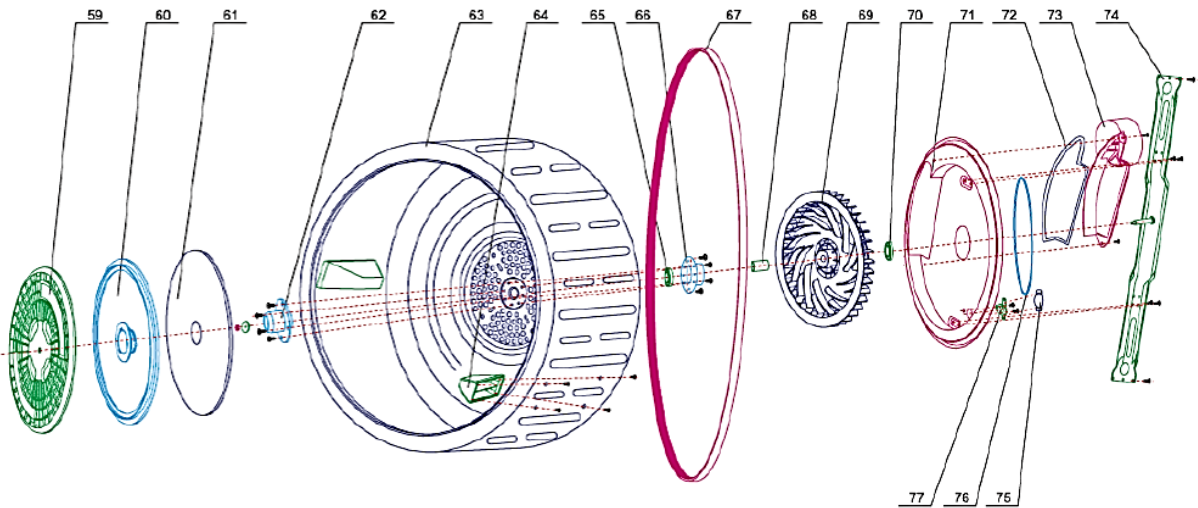
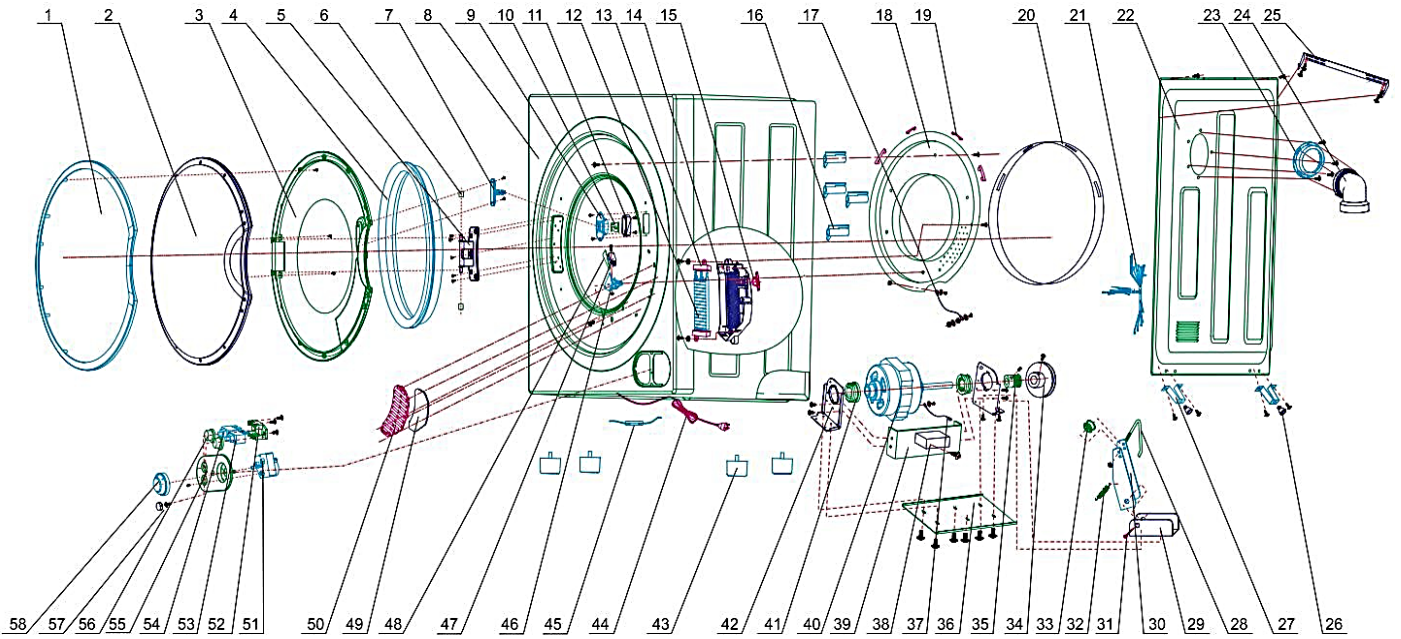
Model Number: **RHVD45UDW**



Model pictured: **RHVD45UDW**

*Actual unit may vary from image shown*

# Exploded View & Parts List



## Parts List

Item	Description	Part Number	QTY in Product
1	DECORATIVE FRAME	GYJSL4781001B	1
2	OUTER DOOR	GYJSL4781002	1
3	DOOR INNER COVER	GYJSL4781003	1
4	BIG SEAL	GYJXJ4680102	1
5	DOOR HINGE	GYJYZ4781005	1
6	DOOR AXIS	GYJSL4781004	2
7	DOOR LOCK	GYJSL4781101B	1
8	CABINET	GYJCY4780101B2	1
9	DOOR LOCK BASE	GYJSL4781101B	1
10	DOOR LOCK SPRING	GYJWJ82681102	1
11	DOOR LOCK BASE COVER	GYJSL82681103	1
12	PTC HEATING ELEMENT	GYJDQ4680401	1
13	PTC INSTALLATION RACK	GYJSL4680404	2
14	PTC INSTALLATION BOX	GYJSL4680405	1
15	PTC THERMAL BREAKER	GYJDQ4680402A	1
16	CONNECTING POLE	GYJSL4681304	4
17	GROUND WIRE FRONT SEAL DISC	GYJDQ4680601	1
18	FRONT SEAL DISC	GYJCY4680602B	1
19	RUBBER PAD	GYJXJ4680603	4
20	FRONT SEAL DISC SEAL COTTON	GYJHM4680604B	1
21	WIRE	GYJDQ4680403	1
22	BACK COVER	GYJCY4681311B	1
23	EXHAUST PIPE CONNECTOR	GYJSL4681324	1
24	EXHAUST PIPE JOINT	GYJSL4681223	1
25	WALL MOUNTING HOOK	GYJCY4681224	1
26	BACK SUPPORT GASKET	GYJXJ4681202	2
27	BACK SUPPORT	GYJCY4681203B	2
28	BELT TENSION WHEEL BEARING	GYJWJ4680213	1
29	BELT TENSION WHEEL SPRING	GYJCY4680209	1
30	TENSION BRACKET + WHEEL	GYJCY4680210	1
31	WINDOW PIN	GYJBZ82680106	1
32	DRAW SPRING	GYJWJ4680211	1
33	BELT TENSION WHEEL	GYJSL4680204	1
34	MOTOR PULLER FOR FAN	GYJSL4680205	1
35	MOTOR PULLER	GYJWJ4680212	1
36	MOTOR FIXING BOARD	GYJCY4681303	1
37	MOTOR CONNECTING LINE	GYJDQ4680203	1
38	CAPACITOR 6uf	GYJDQ4680202A	1
39	MOTOR SUPPORT	GYJCY4680208A	1
40	DRYER MOTOR	GYJDQ4680201A01	1

## Parts List Continued

Item	Description	Part Number	QTY in Product
41	MOTOR VIBRATION PROOF PAD	GYJXJ4680206	2
42	MOTOR SUPPORTING BOARD	GYJCY4680207	2
43	SUPPORTING FOOT	GYJSL4680103A3	4
44	POWER CORD	GYJDQ4681301B1	1
45	FUSE TUBE	GYJDQ4680701	1
46	SAFETY SWITCH	GYJSL4680503	1
47	SENSITIVE SWITCH	GYJDQ4680502	1
48	SENSITIVE SWITCH TABLETTING	GYJCY4680504	1
49	AIR INLET FILTER	GYJHM4681306	1
50	AIR INLET COVER	GYJSL4681307	1
51	TIMER	GYJDQ4680301	1
52	TANDEM SWITCHES BASE(BIG)	GYJSL4680309	1
53	SINGLE SWITCH	GYJDQ4680303A	1
54	SINGLE SWITCH	GYJDQ4680303B	1
55	CONTROL PANEL	GYJYSOMG01	1
56	TANDEM SWITCHES CAP(BIG)	GYJSL4680308D	1
57	SCREW COVER	GYJSL4581301	1
58	KNOB	GYJSL4780302	1
59	FILTER COVER	GYJSL4680902B	1
60	FILTER	GYJSL4680903	1
61	FILTER OF INNER TUB	GYJHM4680901A	1
62	FILTER BASE	GYJSL4680807	1
63	INNER TUB ASSEMBLY	GYJCY4680802	1
64	ROTATING CHECK BLOCK	GYJSL4680808	3
65	BEARING	GYJBZ4680815	1
66	BEARING BASE	GYJCY4680805	1
67	POLI-V BELT	GYJXJ4680814A	1
68	AXIS SET	GYJWJ4680811	1
69	BALL BEARING FAN ASSEMBLY	GYJSL4680806	1
70	BEARING 608	GYJBZ4680815	1
71	WIND CASE	GYJCY4680803	1
72	AIR EXHAUST SEALING SPONGE	GYJHM4680810	1
73	OUTLET	GYJSL4680809	1
74	SUPPORTING BEAM ASSEMBLY	GYJCY4680804	1
75	PLASTIC COVER THERMAL BREAKER	GYJXJ4680813	1
76	FAN BELT	GYJXJ4680812	1
77	AIR EXHAUST THERMAL BREAKER	GYJDQ4680801	1

### New Zealand

Monaco Corporation Ltd  
 Telephone: (09) 415 6000  
 Facsimile: (09) 415 7400  
 Email: enquiries@robinhood.co.nz  
 www.robinhood.co.nz

### Australia

Shriro Australia Pty Ltd  
 (ABN 28 002 386 129)  
 Telephone: 1800 648 556  
 Facsimile: 1800 628 577  
 Email: enquiries@robinhood.com.au  
 www.robinhood.com.au

