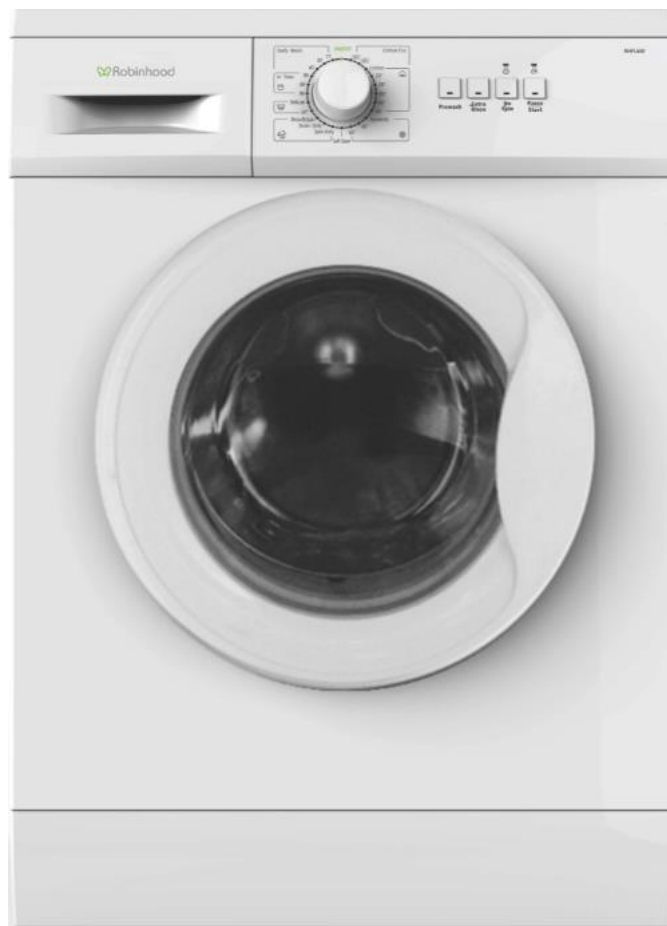


Description: **ROBINHOOD FRONT LOADING WAHSING MACHINE 6KG WHITE**

Model Number: **RHFL6W**



**Model pictured: RHFL6W**

*Actual product may vary from the picture as above*

# Contents

## Congratulations!

Thank you for choosing one of our appliances. Before you use the appliance, we strongly recommend that you read through the whole user manual which provides important safety instructions and description of the product and the proper use of its functions.

To avoid the ever-present risks involved with using an electrical appliance it is vital that the oven is installed correctly and that you read the safety instructions carefully to avoid misuse and hazards. It is important that you retain these instructions and your proof of purchase along with any other important documents about this product for future reference.

Due to continual product development, Robinhood reserves the right to alter specifications or appearances without notice.

Important Safety Instructions.....	1-2
Appliance Details.....	3
Installation.....	4-6
Operating Instructions.....	7-14
Cleaning and Maintenance.....	15-17
Troubleshooting.....	18-19
Warranty certificate (New Zealand) .....	20
Warranty certificate (Australia) .....	21

## Disposal Information

- Most of the packing materials are recyclable. Please dispose of these materials through your local recycling depot or by placing them in appropriate collection containers.
- If you wish to discard this product, please contact your local authorities and ask for the correct method of disposal.

## Important Safety Instructions

**When using electrical appliances, in order to reduce the risk of fire, electric shock, and/or injury to persons, basic safety precautions should always be followed, including**

- This appliance is not intended for use by persons (including children) with reduced physical, sensory or mental capabilities, or lack of experience and knowledge, unless they have been given supervision or instruction concerning use of the appliance by a person responsible for their safety. Young children should be supervised to ensure that they do not play with the appliance.
- The maximum mass of dry load is 6 Kg.
- This appliance is intended to be used in household and similar applications such as:
  - Staff kitchen areas in shops, offices and other working environment.
  - Farm house.
  - By clients in hotels, motels and other residential type environments.
  - Bed and breakfast type environments.
  - Areas for communal use in blocks of flats or in launderettes.
- Carpet does not obstruct the opening for washing machines with ventilation openings in the base.
- If the supply cord is damaged, it must be replaced by the manufacturer, its service agent or similarly qualified persons in order to avoid a hazard.
- Water mains:
  - Maximum inlet water pressure 1MPa.
  - Minimum inlet water pressure 0.05MPa.
- The new detachable hose sets supplied with the appliance are to be used and that old detachable hose sets should not be used.
- Unplug the appliance, before any maintenance.
- Always unplug the appliance and turn off the water supply after use.
- To ensure your safety, power plug must be inserted into an earthed three-pole socket. Check carefully and make sure that your socket is properly and reliably earthed.
- Make sure that the water and electrical devices must be connected by a qualified technician in accordance with the manufacturer's instructions and local safety regulations.
- Remove all packages and transport bolts before using the appliance. Otherwise, serious damage may result.
- Power plug must be accessible after installation.
- Washing machine shall not be installed in bath room or very wet rooms as well as in the rooms with explosive or caustic gases.
- The washing machine with single inlet valve only can be connected to the cold water supply. The product with double inlet valves should be correctly connected to the hot water and cold water supply.
- Your product is only for home use and is only designed for the textiles suitable for machine washing.
- Do not climb up and sit on top cover of the machine.
- Do not lean against machine door.
- Cautions during Handling Machine:
  1. Transport bolts shall be reinstalled to the machine by a specialized person.
  2. The accumulated water shall be drained out of the machine.
  3. Handle the machine carefully. Never hold each protruded part on the machine while lifting. Machine door cannot be used as the handle during the conveyance.
  4. This appliance is heavy. Transport with care.
- Please do not close the door with excessive forces. If it is difficult to close the door, please check if the clothes are put in or distributed well.
- It is forbidden to wash carpets.
- Flammable and explosive or toxic solvents are forbidden. Gasoline and alcohol etc shall not be used as detergents. Please only select the detergents suitable for machine washing, especially for drum.

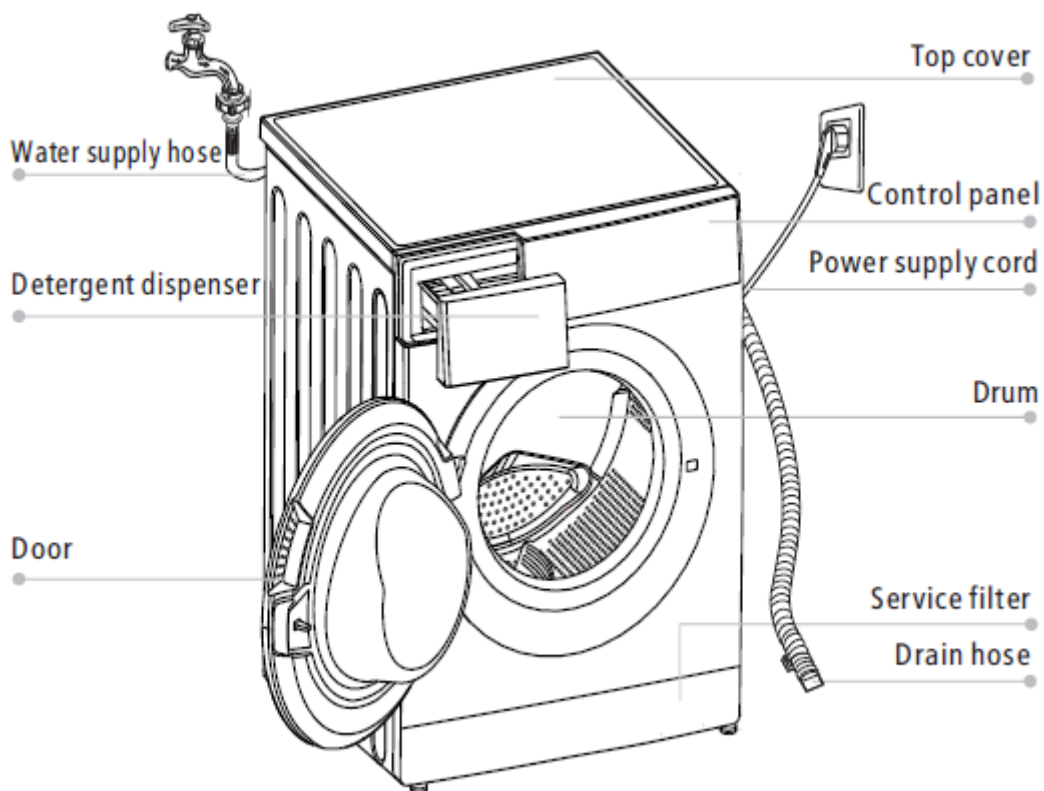
## Important Safety Instructions

- Make sure that all pockets are emptied. Sharp and rigid items such as coin, brooch, nail, screw or stone etc. may cause serious damages to this machine.
- Please check whether the water inside the drum has been drained before opening its door. Please do not open the door if there is any water visible.
- Be careful of burning when the product drains hot washing water.
- Never refill the water by hand during washing.
- After the program is completed, Please wait for two minutes to open the door.
- **WARNING:** The appliance must not be supplied through an external switching device, such as a timer, or connected to a circuit that is regularly switched on and off by a utility.
- **WARNING:** This appliance is only to be serviced by a qualified person. There are no user-serviceable parts inside.
- Unplug the power before cleaning and maintenance.
- Save these instructions.

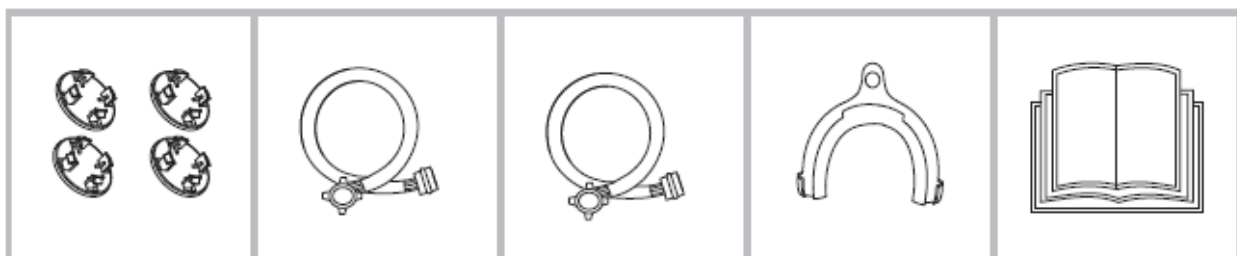
INDOOR USE ONLY - this appliance is not intended for outdoor use.

## Appliance details

Model	RHFL6W
Maximum Drying Capacity	6 kg
Rated Voltage	220 – 240 V
Rated Frequency	50 Hz
Rated Wattage	1950 W
Net Weight	61 kg
Dimension (WxDxH)	595x 495x 850mm (Depth without door frame) 595x 540x 850mm (Depth with door frame)



### Accessories



Transport  
hole plug

Supply hose  
cold water

Supply hose  
hot water  
(optional)

Drain hose  
support  
(optional)

Owner's  
manual

# Installation Instructions

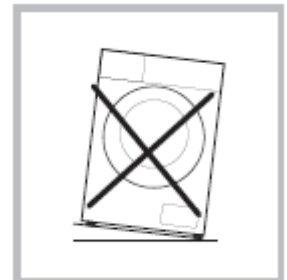
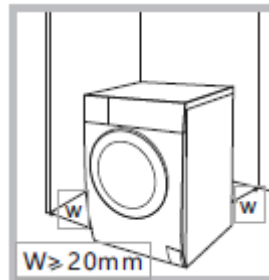
## Installation Area

### Warning!

- Stability is important to prevent the product from wandering!
- Make sure that the product should not stand on the power cord.

Before installing the machine, the location characterized as follows shall be selected:

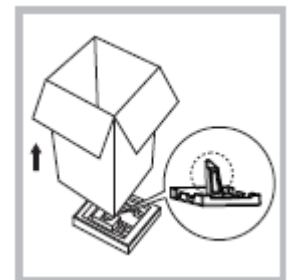
1. Rigid, dry, and level surface
2. Avoid direct sunlight
3. Sufficient ventilation
4. Room temperature is above 0°C
5. Keep far away from the heat resources such as coal or gas.



### Warning!

- Packaging material (e.g. Films, Styrofoam) can be dangerous for children.
- There is a risk of suffocation ! Keep all packaging well away from children.

1. Remove the cardboard box and styrofoam packing.
2. Lift the washing machine and remove the base packing. Make sure the small triangle foam is removed with the bottom one together. If not, lay the unit down with side surface, then remove the small foam from the unit bottom manually.
3. Remove the tape securing the power supply cord and drain hose.
4. Remove the inlet hose from the drum.



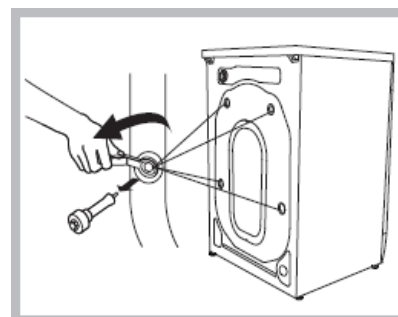
## Remove transport bolts

### Warning!

- You must remove the transport bolts from the backside before using the product.
- You'll need the transport bolts again if you move the product , so make sure you keep them in a safe place.

Please take the following steps to remove the bolts:

1. Loosen 4 bolts with spanner and then remove them.
2. Stop the holes with transport hole plugs.
3. Keep the transport bolts properly for future use.



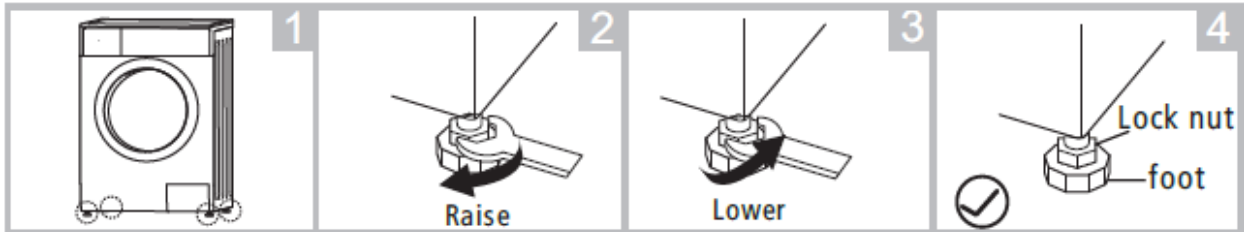
# Installation Instructions

## Levelling the washing machine

### Warning!

The lock nuts on all four feet must be screwed tightly against the housing.

1. Check if the legs are closely attached to the cabinet. If not, please turn them to their original positions tighten the nuts.
2. Loosen the lock nut turn the feet until it closely contacts with the floor.
3. Adjust the legs and lock them with a spanner, make sure the machine is steady.



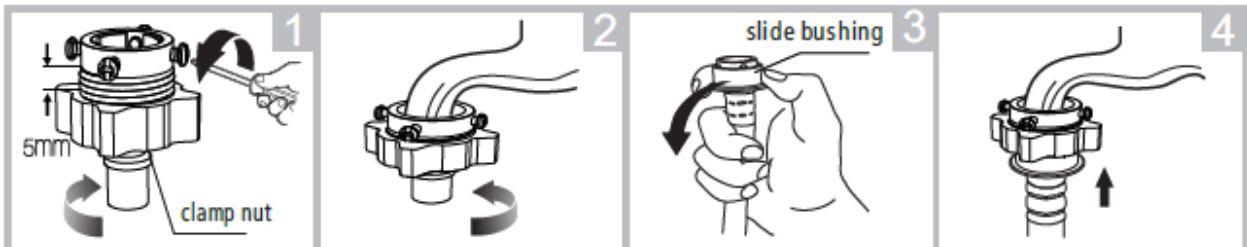
## Connect Water Supply Hose

### Warning!

- To prevent leakage or water damage, follow the instructions in this chapter!
- Do not kink, crush, modify or sever water inlet hose.

Connect the inlet pipe as indicated, There are two ways to connect the inlet pipe.

1. Connection between ordinary tap and inlet hose.



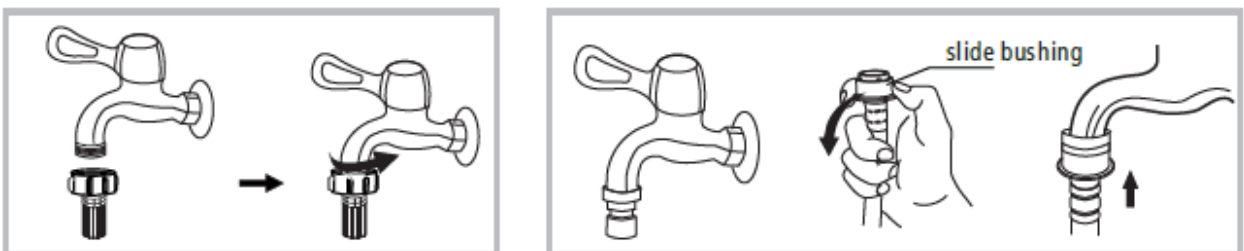
Loosen clamp nut and four bolts

Tighten clamp nut

Press slide bushing, insert inlet hose into connecting base

Connection finished

2. Connection between screw tap and inlet hose.

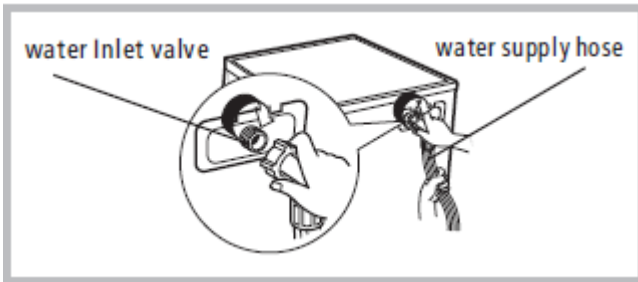


Tap with threads and inlet hose

Special tap for washing machine

# Installation Instructions

Connect the other end of inlet pipe to the inlet valve at the backside of product and fasten the pipe tightly clockwise.



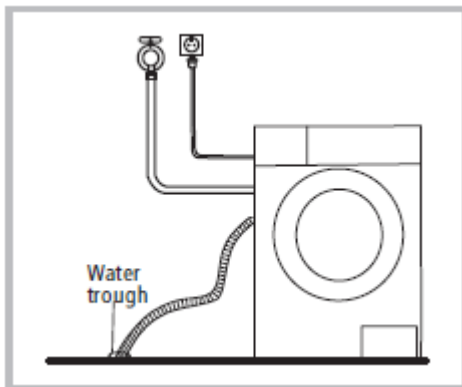
## Drain Hose

### Warning!

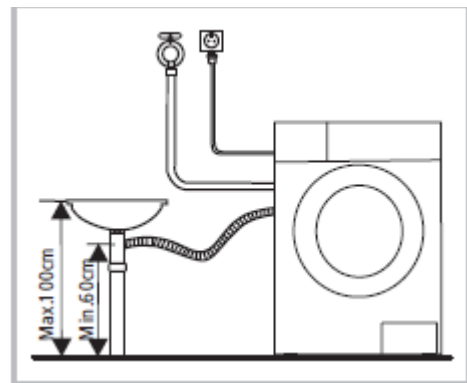
- Do not kink or protract the drain hose.
- Position drain hose properly, otherwise damage might result of water leakage.

There are two ways to place the end of drain hose:

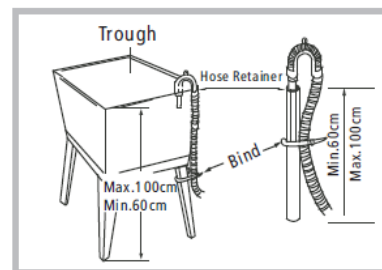
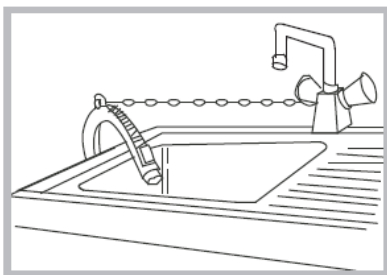
1. Put it into the water trough.



2. Connect it to the branch drain pipe of the trough



- If the machine has drain hose support, please install it like the following.



### Warning!

- When installing drain hose, fix it properly with a rope.
- If drain hose is too long, do not force it into washing machine as it will cause abnormal noises.



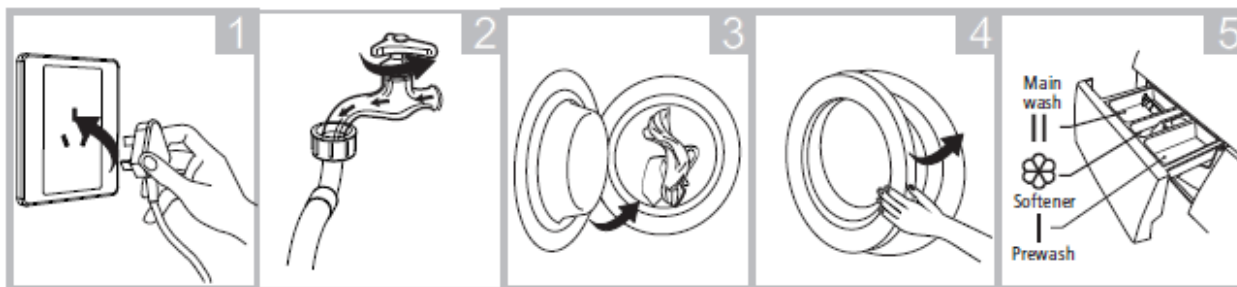
# Operation Instructions

## Quick Start

### Caution!

- Before washing, please make sure it's installed properly.
- Before washing at first time, the washing machine shall be operated in one round of the whole procedures without clothes in as follow.

## 1. Before Washing



Plug in

Open tap

Load

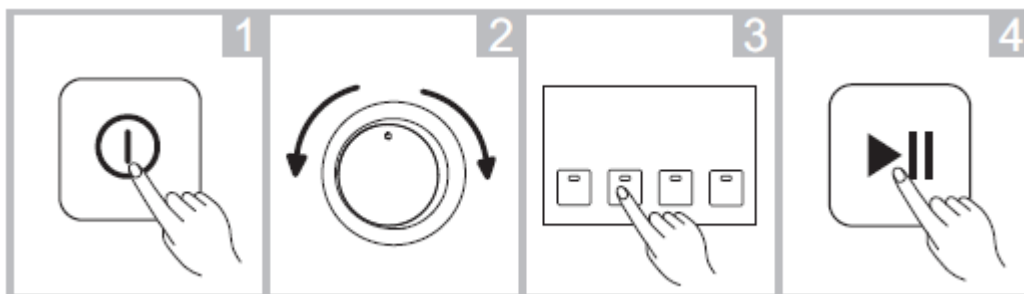
Close door

Add detergent

### Note !

- Detergent only needs to be added in "case I "after selecting pre-washing for machines with this function.

## 2. Washing



Power On

Select Program

Select function  
or default

Start up

### Note !

- If default is selected, step 3 can be skipped.
- The function button line chart is for reference only, please refer to real product as standard.

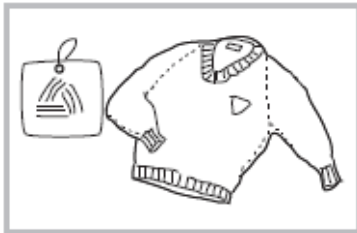
## 3. After Washing

Buzzer bee or "End" or two small points flash on display.

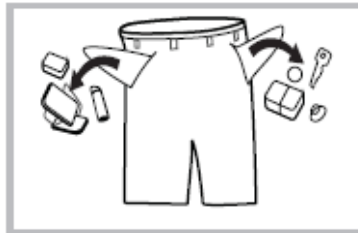
# Operation Instructions

## Before Each Washing

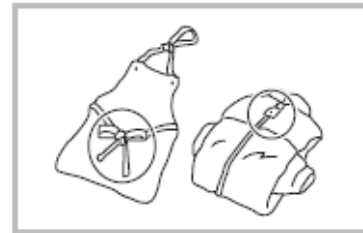
- The working condition of the washer should be (0-40) °C. If used under 0°C, the inlet valve and draining system may be damaged. If the machine is placed under condition of 0°C or less, then it should be transferred to normal ambient temperature to ensure the water supply hose and drain hose are not frozen before use.
- Please check the labels and the explanation of using detergent before wash. Use non-foaming or less-foaming detergent suitable for machine washing properly.



Check the label



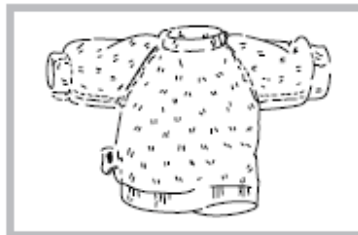
Take out the items out of the pockets



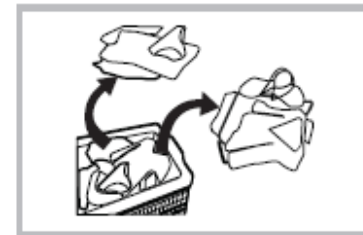
Knot the long strips, zip or button



Put small clothes into the pillow slip



Turn easy-pilling and long-pile fabric inside out



Separate clothes with different textures

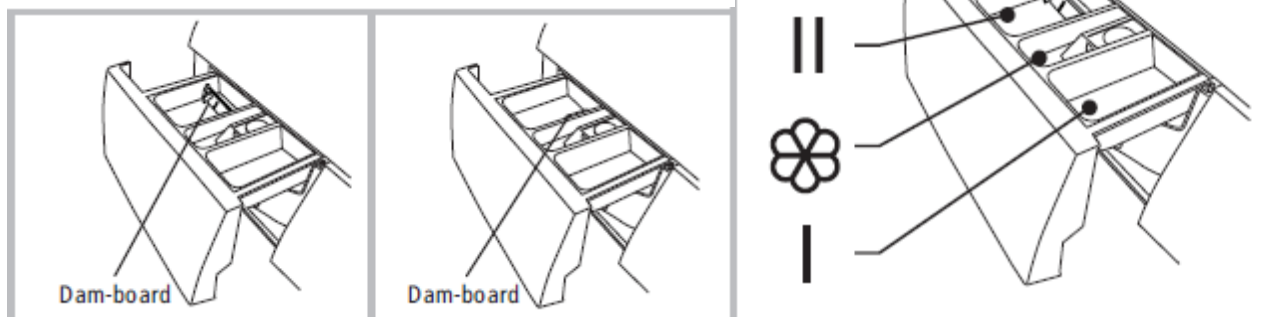
## Warning!

- When washing single clothes, it may easily cause great eccentricity and give alarm due to great unbalance. Therefore it is suggested to add one or two more clothes to be washed together so that draining can be done smoothly.
- Don't washing the clothes touching with kerosene, gasoline, alcohol and other flammable materials.

# Operation Instructions

## Detergent Dispenser

- I Pre wash detergent
- II Main wash detergent
- ☼ Softener



### Caution!

- Detergent only needs to be added in "case I "after selecting pre-washing for machines with this function.

Programme	I	II	☼	Programme	I	II	☼
Cotton Eco 40 °C		●	○	Spin Only			
Cotton Eco 60 °C		●	○	Drain Only			
Cotton	○	●	○	Rinse&Spin			○
Cotton 20 °C	○	●	○	Delicate 30 °C		●	○
Cotton 30 °C	○	●	○	Delicate		●	○
Cotton 40 °C	○	●	○	Ends in 9H		●	○
Cotton 60 °C	○	●	○	Ends in 6H		●	○
Cotton 90 °C	○	●	○	Ends in 3H		●	○
Synthetic	○	●	○	Daily Wash 45'		●	○
Synthetic 40 °C	○	●	○	Daily Wash 30'		●	○
Synthetic 60 °C	○	●	○	Daily Wash 15'		●	○
Drum Clean							

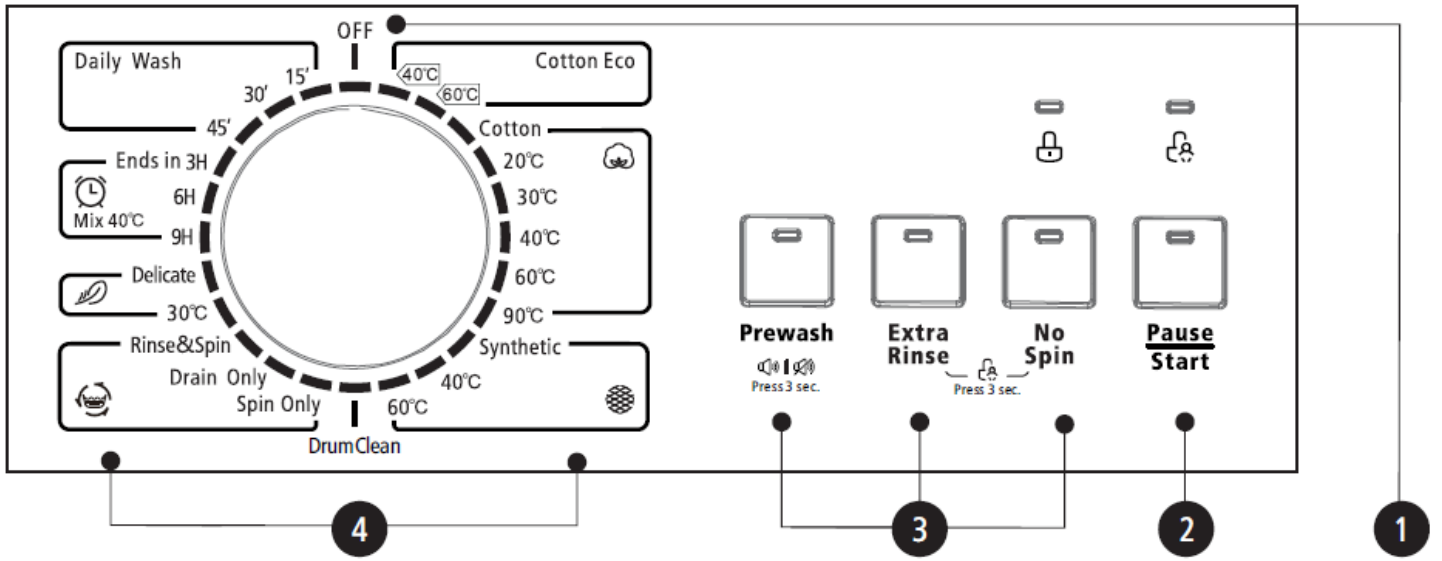
- Means must
- Means optional

### Caution!

- As for the agglomerated or ropy detergent or additive, before they are poured into the detergent box, it is suggested to use some water for dilution to prevent the inlet of detergent box from being blocked and overflowing while filling water.
- Please choose suitable type of detergent for the various washing temperature to get the best washing performance with less water and energy consumption.

# Operation Instructions

## Control Panel



### 1 Off

Product is switched off.

### 2 Start/Pause

Press the button to start or pause the washing cycle.

### 3 Option

This allows you to select an additional function and will light when selected.

### 4 Programmes

Available according to the laundry type.

# Operation Instructions

## Option

**Prewash:** The Prewash function can get an extra wash before main wash. It is suitable for washing the dust rises to surface of the clothes. You need to put detergent into the Case (I) when select it.

**Extra Rinse:** The laundry will undergo extra rinse once after you select it.

**No Spin:** It will not spin if you choose this function.

**Delay:** Delay function can be set with this button, the delaying time is 0-24H.

**Spin Speed:** It can be set the spin speed to press the button repeatedly

Programme	Option		Programme	Option	
	Prewash	Extra Rinse		Prewash	Extra Rinse
Cotton Eco 40 °C			Spin Only		
Cotton Eco 60 °C			Drain Only		
Cotton	<input type="radio"/>	<input type="radio"/>	Rinse&Spin		<input type="radio"/>
Cotton 20 °C	<input type="radio"/>	<input type="radio"/>	Delicate 30 °C		<input type="radio"/>
Cotton 30 °C	<input type="radio"/>	<input type="radio"/>	Delicate		<input type="radio"/>
Cotton 40 °C	<input type="radio"/>	<input type="radio"/>	Ends in 9H		
Cotton 60 °C	<input type="radio"/>	<input type="radio"/>	Ends in 6H		
Cotton 90 °C	<input type="radio"/>	<input type="radio"/>	Ends in 3H		
Synthetic	<input type="radio"/>	<input type="radio"/>	Daily Wash 45'		
Synthetic 40 °C	<input type="radio"/>	<input type="radio"/>	Daily Wash 30'		
Synthetic 60 °C	<input type="radio"/>	<input type="radio"/>	Daily Wash 15'		
Drum Clean					

## Other Functions



Mute the buzzer



Choose the program

Press and hold the [Prewash] / [Delay button for 3 second to mute the buzzer

To unmute the buzzer, press the button again for 3 seconds. The setting will be kept until the next reset.

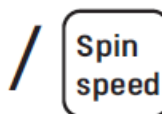
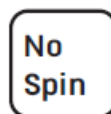
### Caution!

- After the buzzer is mute, there will be no sound alert.

# Operation Instructions



Child Lock



Choose the program

Start

Press [ Extra Rinse ] and [ No Spin ] / [ Spin Speed ] 3 seconds till buzzer beep

## Caution

- Press the two button 3sec. also to be released the function.
- The "Child Lock" will lock all buttons except [ OFF ].
- Cut off the power supply, the kid's protection is to be released.
- If you want to change the program on child lock condition, you should unlock the child lock first, and then rotate the knob to OFF position, finally choose the program you want.

Temperature setting: Cold, 20°C, 30°C, 40°C, 60°C, 90°C

Speed setting:

800: 0-400-600-800

1000: 0-400-600-800-1000

1200: 0-400-600-800-1000-1200

Programme	Default Speed(rpm)	Programme	Default Speed(rpm)
	1200		1200
Cotton Eco 40 °C	1200	Spin Only	1200
Cotton Eco 60 °C	1200	Drain Only	-
Cotton	1200	Rinse&Spin	1200
Cotton 20 °C	1200	Delicate 30 °C	600
Cotton 30 °C	1200	Delicate	600
Cotton 40 °C	1200	Ends in 9H/Mix 60 °C	1000
Cotton 60 °C	1200	Ends in 6H/Mix 40 °C	1000
Cotton 90 °C	1200	Ends in 3H/Mix	1000
Synthetic	1000	Daily Wash 45'	800
Synthetic 40 °C	1000	Daily Wash 30'	800
Synthetic 60 °C	1000	Daily Wash 15'	800

## Note!

- The speed cannot be changed, it is default setting.

# Operation Instructions

## Program

Programs are available according to the laundry type.

Program	
Cotton	Hard-wearing textiles, heat-resistant textiles made of cotton or linen.
Synthetic	Wash synthetic articles, for example: shirts, coats, blending. While washing the knitting textiles, detergent quantity shall be reduced due to its loose string construction and easily forming bubbles.
Daily Wash	It is suitable for washing few and not very dirty clothes quickly.
Cotton Eco	To increase the washing effects, washing time is increased.
Ends in	The function can be set with this program, the total time including washing time and delaying time is 3h, 6h or 9h.
Delicate	For delicate, washable textiles, e.g. made of silk, satin, synthetic fabrics or blended fabrics.
Drum Clean	It applies to 90 °C temperature sterilization to make the clothes washing more green. When this procedure is performed, the clothes or other washing cannot be added. When proper amount of chlorine bleaching agent is put in, the barrel cleaning effect will be better. The customer can use this program regularly according to the need.
Spin Only	Extra spin with selectable spin speed.
Rinse & Spin	Extra rinse with spin.
Drain Only	Drain off the water.
Mix	You can select this procedure wash the tough clothes that need much more time and strength. It is used for the daily clothes to cotton, such as sheets, chained, pillowcases bathrobe and underwear.

# Operation Instructions

## Washing Program Table

Program	Load (kg)	Temp. (°C)	Default Time (H:MM)
Cotton Eco 40 °C	6	40	1:39
Cotton Eco 60 °C	6	60	4:56
Cotton	6	Cold	1:35
Cotton 20 °C	6	20	1:19
Cotton 30 °C	6	30	1:20
Cotton 40 °C	6	40	1:40
Cotton 60 °C	6	60	1:45
Cotton 90 °C	6	90	2:40
Synthetic	3	Cold	1:18
Synthetic 40 °C	3	40	1:33
Synthetic 60 °C	3	60	1:43
Drum Clean	-	90	1:21
Spin Only	6	-	0:12
Drain Only	-	-	0:01
Rinse & Spin	6	-	0:31
Delicate 30 °C	2.5	30	1:00
Delicate	2.5	Cold	0:55
Ends in 9H	6	40	1:13
Ends in 6H	6	40	1:13
Ends in 3H	6	40	1:13
Daily Wash 45'	2	30	0:45
Daily Wash 30'	2	20	0:30
Daily Wash 15'	2	Cold	0:15

- Energy test program: Cotton Eco 60°C, Speed: the highest speed. Other as the default.  
Half load for 5.0/6.0/7.5kg machine:2.5/3.0/3.75Kg.
- “Cotton ECO 60°C ” is the standard washing programs to which the information in the label and the fiche relates, and they are suitable to clean normally soiled cotton laundry and that they are the most efficient program in terms of combined energy and water consumptions for washing that type of cotton laundry, that the actual water temperature may differ from the declared cycle temperature.

### Note!

- The parameters in this table are only for user's reference. The actual parameters may be different with the parameters in above mentioned table.



### Cleaning And Care

#### Warning!

- Before your maintenance starts, please unplug the machine and close the tap.

#### Cleaning The Cabinet

Proper maintenance on the washing machine can extend its working life.

The surface can be cleaned with diluted non-abrasive neutral detergents when necessary. If there is any water overflow, use the wet cloth to wipe it off immediately.

No sharp items are allowed.



#### Note!

- Formic acid and its diluted solvents or equivalent are forbidden, such as alcohol, solvents or chemical products, etc.

#### Cleaning The Drum

The rusts inside the drum by the metal articles shall be removed immediately with chlorine-free detergents. Never use steel wool.

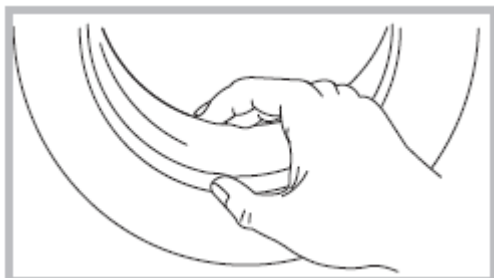
#### Note!

- Don't put laundry in the washing machine during the drum cleaning.

#### Cleaning The Door Seal And Glass

Wipe the glass and seal after each wash to remove lint and stains. If lint builds up it can cause leaks.

Remove any coins, buttons and other objects from the seal after each wash.



## Cleaning and Maintenance

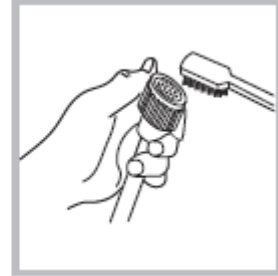
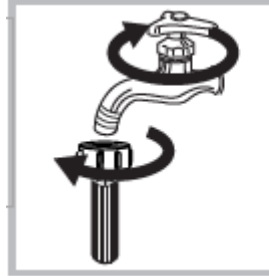
### Cleaning The Inlet Filter

#### Note!

- Inlet filter must be cleaned if there is less water.

Washing the filter in the tap:

1. Close the tap.
2. Remove the water supply hose from the tap.
3. Clean the filter.
4. Reconnect the water supply hose.



Washing the filter in washing machine:

1. Screw off the inlet pipe from the backside of the machine.
2. Pull out the filter with long nose pliers and reinstall it back after being washed.
3. Use the brush to clean the filter.
4. Reconnect the inlet pipe.

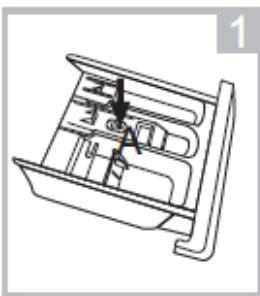


#### Note!

- If the brush is not clean, you can pull out the filter washed separately;
- Reconnect, turn on the tap.

### Clean The Detergent Dispenser

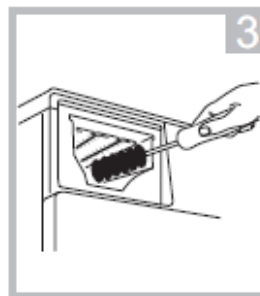
1. Press down the arrow location on softener cover inside the dispenser drawer.
2. Lift the clip up and take out softener cover and wash all grooves with water.
3. Restore the softener cover and push the drawer into position.



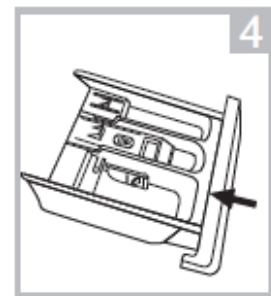
1 Pull out the dispenser Drawer with press the A



2 Clean the dispenser drawer under water



3 Clean inside the recess With an old toothbrush



4 Insert the dispenser

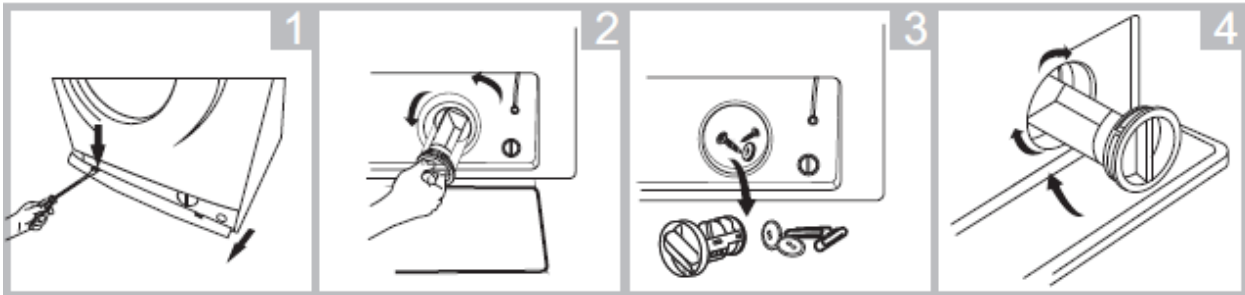
#### Note!

- Do not use alcohol, solvents or chemical products to clean the machine

### Cleaning The Drain Pump Filter

#### Warning!

- Be careful of the hot water!
- Allow detergent solution to cool down.
- Unplug the machine to avoid electrical shock before washing.
- Drain pump filter can filter the yarns and small foreign matters from the washing.
- Clean the filter periodically to ensure the normal operation of washing machine.



Open the Service filter

Open the filter by turning  
to the counter clockwise

Remove extraneous  
matter

Close the lower cover cap





















#### Caution!

- Make sure that valve cap and emergency drain hose are reinstalled properly, cap plates should be inserted aligning to hole plates otherwise water may leak;
- Some machines don't have emergency drain hose, Rotate lower cover cap directly to make water run into basin.
- When the appliance is in use and depending on the program selected there can be hot water in the pump. Never remove the pump cover during a wash cycle, always wait until the appliance has finished the cycle, and is empty. When replacing the cover, ensure it is securely re-tightened.

# Troubleshooting

Try to find a solution to the problem, if not, contact the service center.

Description	Reason	Solution
Washing machine cannot start up	Door is not closed properly	Restart after the door is closed Check if the clothes is stuck
Door can't be opened	Washer's safety protection design is working	Disconnect the power, restart the product
Water leakage	The connection between inlet pipe or outlet hose is not tight	Check and fasten water pipes Clean up outlet hose
Detergent residues in the box	Detergent is dampened or agglomerated	Clean and wipe the detergent box
Indicator or display does not light	Disconnect the power PC board or harness has connection problem	Check if the power is shut down and the power plug is connected correctly
Abnormal noise		Check if the fixing (bolts) have been removed Check it's installed on a solid and level floor

Description	Reason	Solution
    	Door is not closed properly	Restart after the door is closed Check if the clothes is stuck
    	Water injecting problem while washing	Check if the water pressure is too low Straighten the water pipe Check if the inlet valve filter is blocked
    	Overtime water draining	Check if the drain hose is blocked
    	Water overflow	Restart the washer
	Others	Please try again first, call up service line if there is still troubles

## Troubleshooting

Description	Reason	Solution
E30	Door is not closed properly	Restart after the door is closed Check if the clothes is stuck
E10	Water injecting problem while washing	Check if the water pressure is too low Straighten the water pipe Check if the inlet valve filter is blocked
E21	Overtime water draining	Check if the drain hose is blocked
E12	Water overflow	Restart the washer
Others	Please try again first, call up service line if there is still troubles	

### Note!

- After the check, activate the appliance. If the problem occurs again, contact the service.

# Warranty Certificate (New Zealand)

## Terms and Conditions

The following conditions apply in respect of the warranty given in this certificate:

1. Monaco Corporation Limited ("Monaco") warrants the following Robinhood products against manufacturing defects and faulty materials, under normal use and subject to the exclusions in this certificate, for a period of:
  - Rangehood, Ovens, Cooktops, Dishwashers, Refrigeration - 24 months from date of original purchase for domestic use.
  - Uniduct - 12 months from date of original purchase for domestic use.
  - Ironing centre - 12 months from date of original purchase for domestic use.
  - Sinks sets- 5 years on stainless steel sink including draining bench from date of original purchase for domestic use, 6 months on all stainless steel accessories, including wire rack, colander and tray from date of original purchase for domestic use.
  - Laundry Tub - 5 years on stainless bowl, 24 months on Tap, Cabinet and other components from the date of original purchase for domestic use.

"Original purchase", when used in this certificate, means purchase by the customer directly from Monaco or one of its approved suppliers.

2. This warranty is limited to the repair or replacement, at our option, within the warranty period of any component part which we at our discretion determine to contain faulty materials or a manufacturing defect in breach of this warranty. This warranty is subject to terms and conditions set out in this certificate.
3. The warranty only applies within New Zealand.
4. The customer must produce the original invoice or other purchase documentation as proof of the original purchase date.

## Warranty exclusions

1. The warranty does not apply where, in Monaco's opinion:
  - The defect is caused by misuse, wear and tear, dirt, fire or accidental damage. The product has been repaired or serviced by an unauthorised person.
  - The product was not installed in accordance with our instructions.
  - The product was purchased overseas or was not designed for use in New Zealand. The product was not used, cleaned or cared for in accordance with our instructions.
  - The product was used outdoors.
2. In addition, this warranty does not extend to damage or defects which in our opinion, directly or indirectly arise from or are due to:
  - Exposing the product to acidic or corrosive materials or chemicals such as dyes, solvents, denture cleaner or acetone; Using inappropriate household cleaning products such as abrasive cream or powder cleansers, furniture polish, bleach, mentholated spirits, drain cleaners, sugar soap, metal pads and strongly alkaline or acidic cleaners;
  - Heat damage, including from washing the product at high temperatures;
  - Impact or mishandling the product, including the impact caused by objects scraped along, thrown or dropped on the product surface or excessive weight being placed on the product;
  - Structural or support changes in or affecting the building or the application where the product has been installed;
  - Failure to clean or maintain the product as recommended; or any other causes specified in the product information as being excluded from this warranty.
3. Variations with the colour or gloss within the product or any ageing or fading of colour, shine or gloss level over time are not covered by this warranty. The warranty does not cover visual imperfections or blemishes in the surface and edges of the product that were not brought to your supplier's attention at the time you inspected the product.
4. Costs incurred on installation or removal of a product, or any reinstallation of a product, or any associated costs, are not covered by this warranty.
5. Monaco will not be liable for consequential or indirect loss or damage whatsoever and however arising out of or in connection with the supply, performance or removal of the product, including (but not limited to) loss of profit, loss of revenue, loss of contract, loss of goodwill or increased cost of workings, even if due to the negligence of Monaco or any of its approved suppliers, employees or agents.
6. Charcoal filters and light bulbs are not covered by this warranty
7. This warranty and the statements contained in this certificate or other documents given to you do not exclude, restrict or modify the application of any term implied into this warranty by statute, provided that (to the extent any statutory provision permits Monaco to limit its liability for a breach of an implied condition or warranty) Monaco's liability for such breach is limited to the payment of the cost of replacing the product, repairing the product or acquiring an equivalent product.
8. Subject to clause 5, our obligations under this warranty are limited to those set out in this certificate, and this warranty is expressly instead of all other warranties, express or implied, including any implied warranty of merchantability or fitness for a particular purpose and notwithstanding any course of dealing between the parties or custom and usage in trade to the contrary.

Terms and conditions are subject to change.

# Warranty Certificate (Australia)

## Terms and Conditions

If you are a consumer under the Australian Consumer Law, our goods come with guarantees that cannot be excluded under the Australian Consumer Law. You are entitled to a replacement or refund for a major failure and for compensation for any other reasonably foreseeable loss or damage. You are also entitled to have the goods repaired or replaced if the goods fail to be of acceptable quality and the failure does not amount to a major failure.

1. Shriro Australia Pty Limited ("Shriro") also warrants the following Robinhood products against manufacturing defects and faulty materials, under normal use and subject to the exclusions in this certificate, for a period of:
  - Rangehood, Ovens, Cooktops, Dishwashers, Refrigeration - 24 months from date of original purchase for domestic use.
  - Uniduct - 12 months from date of original purchase for domestic use.
  - Ironing centre - 12 months from date of original purchase for domestic use.
  - Sinks sets- 5 years on stainless steel sink including draining bench from date of original purchase for domestic use, 6 months on all stainless steel accessories, including wire rack, colander and tray from date of original purchase for domestic use.
  - Laundry Tub - 5 years on stainless bowl, 24 months on Tap, Cabinet and other components from the date of original purchase for domestic use. "Original purchase", when used in this certificate, means purchase by the customer directly from Shriro or one of its approved suppliers.
2. This warranty is limited to the repair or replacement, at our option, within the warranty period of any component part which we at our discretion determine to contain faulty materials or a manufacturing defect in breach of this warranty. This warranty is subject to terms and conditions set out in this certificate.
3. The warranty only applies within Australia.
4. For warranty service outside of capital city metropolitan area or 30 km from nearest authorised service agent you will be liable for reasonable travelling expenses and the cost of transport of the product or parts to and from the service agent
5. To make a claim under this warranty, you must produce the original invoice or other purchase documentation as proof of the original purchase date. You must send your claim to Shriro Australia Pty Limited, 104 Vanessa Street, Kingsgrove, NSW, 2208, within 7 days of any alleged defect or failure of the product first becoming apparent. You are responsible for the expense of making a claim under this warranty.

*This warranty is given by:*

Shriro Australia Pty Ltd, ABN: 28 002 386 129

Telephone: 1800 648 556

Facsimile: 1800 628 577

Email: [customercare@robinhood.com.au](mailto:customercare@robinhood.com.au)

[www.robinhood.com.au](http://www.robinhood.com.au)

Attention: Customer Services Manager

## Warranty exclusions

1. The warranty does not apply where, in Shriro's opinion:
  - The defect is caused by misuse, wear and tear, dirt, fire or accidental damage. The product has been repaired or serviced by an unauthorised person.
  - The product was not installed in accordance with our instructions.
  - The product was purchased overseas or was not designed for use in Australia.
  - The product was not used, cleaned or cared for in accordance with our instructions.
  - The product was used outdoors.
2. All Robinhood Rangehoods are suitable for indoor use only and not suitable over BBQs or charcoal cookers designed for outdoor use.
3. In addition, this warranty does not extend to damage or defects which in our opinion, directly or indirectly arise from or are due to: exposing the product to acidic or corrosive materials or chemicals such as dyes, solvents, denture cleaner or acetone; using inappropriate household cleaning products such as abrasive cream or powder cleansers, furniture polish, bleach, mentholated spirits, drain cleaners, sugar soap, metal pads and strongly alkaline or acidic cleaners; heat damage, including from washing the product at high temperatures; impact or mishandling the product, including the impact caused by objects scraped along, thrown or dropped on the product surface or excessive weight being placed on the product; structural or support changes in or affecting the building or the application where the product has been installed; failure to clean or maintain the product as recommended; or any other causes specified in the product information as being excluded from this warranty.
4. Variations with the colour or gloss within the product or any ageing or fading of colour, shine or gloss level over time are not covered by this warranty. The warranty does not cover visual imperfections or blemishes in the surface and edges of the product that were not brought to your supplier's attention at the time you inspected the product.
5. We will not be responsible under this warranty for, nor pay the costs of, removing the existing product, or reinstalling the new product, or any associated costs or damages.
6. Charcoal filters and light bulbs are not covered by this warranty.

The benefits given by this warranty are in addition to other rights and remedies of consumers under any law in relation to the goods which cannot be excluded.

This warranty certificate is not intended to create a contract between Shriro Australia Pty Limited and the purchaser.

New Zealand  
Monaco Corporation Ltd  
Telephone: (09) 415 6000  
Facsimile: (09) 415 7400  
Email: [enquiries@robinhood.co.nz](mailto:enquiries@robinhood.co.nz)  
[www.robinhood.co.nz](http://www.robinhood.co.nz)

Australia  
Shriro Australia Pty Limited  
ABN 28 002 386 129  
Telephone: 1800 648 556  
Facsimile: 1800 628 577  
Email: [enquiries@robinhood.com.au](mailto:enquiries@robinhood.com.au)  
[www.robinhood.com.au](http://www.robinhood.com.au)